

# Putter Grip - Arm Lock Series

## Installation Instructions



**Congratulations** on purchasing your new Arm-Lock Putter Grip! Your grip can be installed at your local Golf Shop who is familiar with this process or by yourself with a few simple tools. Be sure to bring these instructions, your new grip, and putter with you for fast and easy installation if you choose the Golf Shop installation option.

AL2 - 17"



CVTR - 19.5"

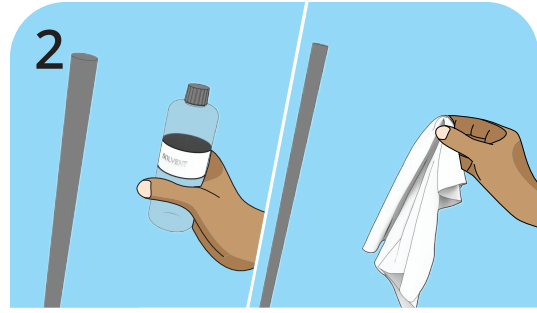


For Arm-Lock Series grips (AL2 and CVTR) Arm-Lock technique, the ideal putter length is between 42-45" which may require you to extend the length of your putter depending on the current shaft length.

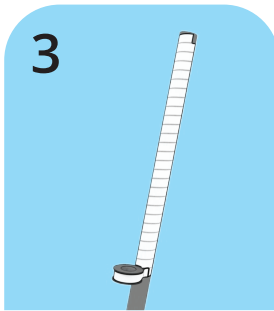
If your putter is a standard length of 33-35", you'll need to first extend the length of your putter shaft to be a total of 42-45" using a shaft extender dowel. Your local Golf Shop is familiar with this process and can complete this for you. Once your putter is extended to be 42-45" in length, proceed with the below instructions.



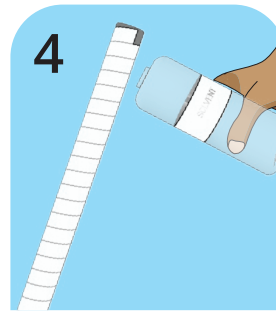
1 Fully remove old grip, tape and any residue using a box cutter.



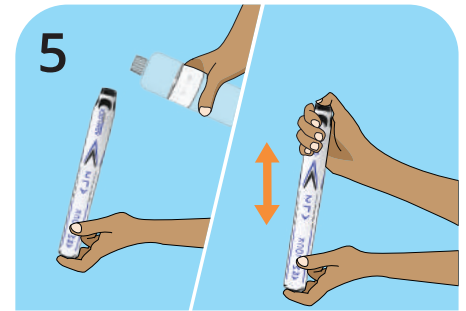
2 Use a solvent (such as Mineral Spirits or paint thinner), scraping tool and a towel to remove any existing residue.



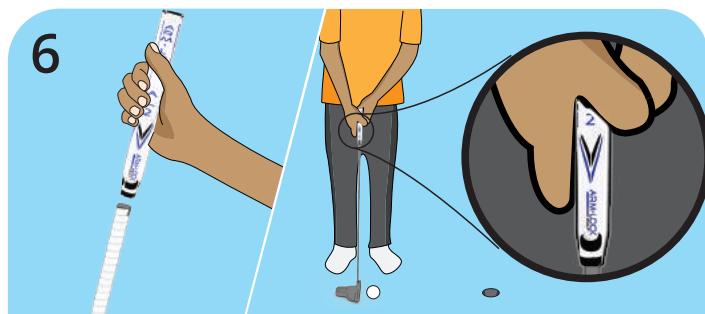
3 Apply NEW grip tape on the putter for the full length of your new grip (17" or 19.5") depending on your Arm-Lock model.



4 Apply a generous amount of the solvent over the tape once it's on the putter.



5 Cover the button hole at the top of a grip with a finger and add a generous amount of solvent. Cover the other side of the grip with your palm and shake well to coat the inside of the grip. Dump out excess solvent when complete.



6 The grip should be installed so that the logo faces out towards the ball. Quickly slide the grip straight down the shaft of the putter until it is fully secure against the end of the putter shaft. Make sure the grip is centred on your putter.



7 Allow the grip tape to fully set for 24 hours before use. Remove any excess tape at the bottom of the grip and wipe down with a clean rag.

### Materials Needed

New Arm-Lock Golf putter grip



Box cutter

Solvent (e.g. Mineral Spirits, paint thinner)



Putter tape

Tape measure



Old towel