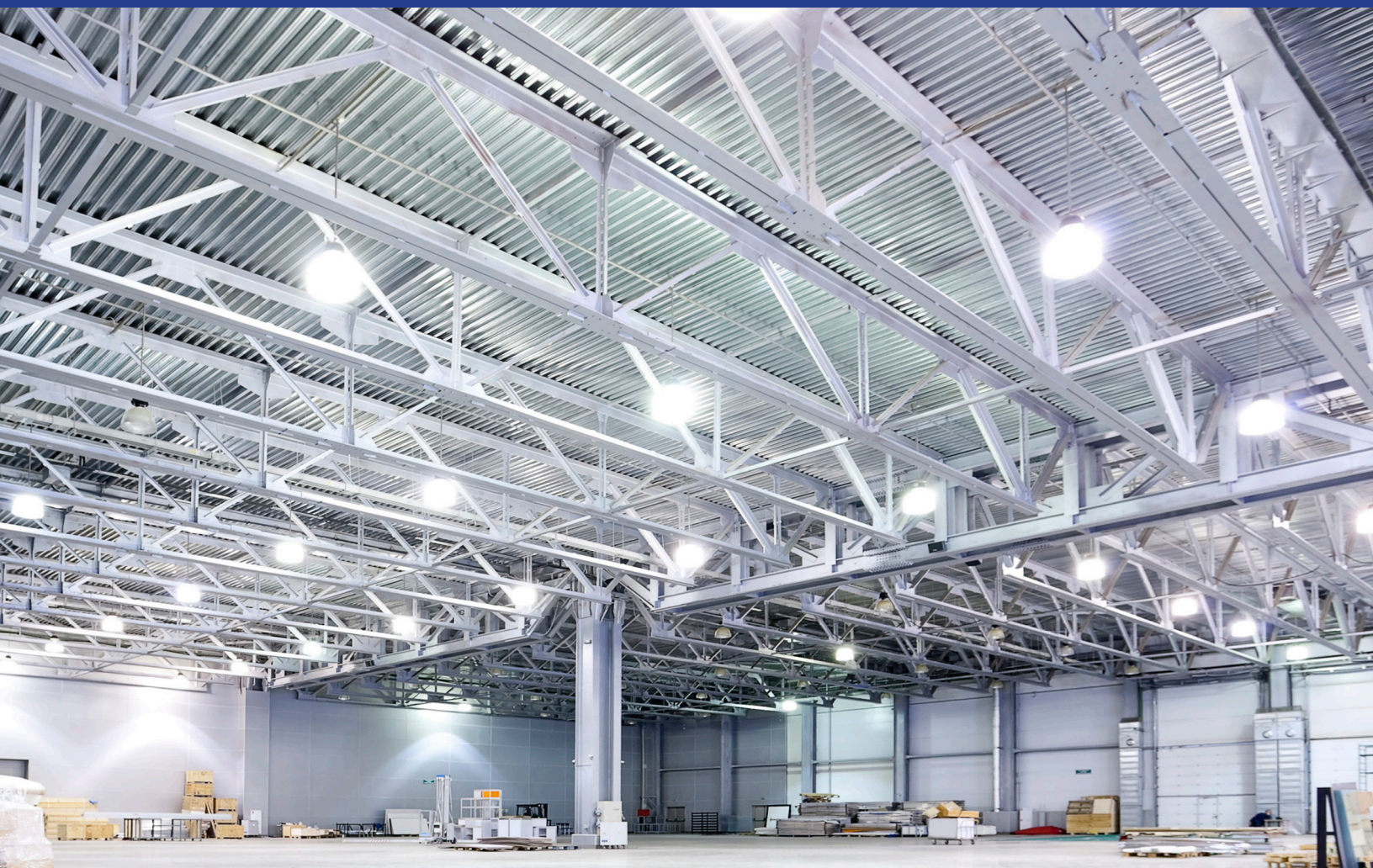




NEXT-GENERATION LED HIGH BAY SOLUTIONS FROM C&M LIGHTING



CONTACT US TODAY!

www.cm.lighting
info@cm.lighting
1-877-CMLIGHT



**OFFERED IN 100, 150 & 200 WATTS
GUARANTEED FOR 5 YEARS**



C&M LIGHTING

Dimmable LED High Bay Light

C&M High Bay LED lights are compact, lightweight, and ideal for up to 35-foot mounting heights. Each light offers a 50K hour life rating and suitable for elevated and deep-freeze ambient temperatures. Perfect for warehouses, gymnasiums, commercial cooling, and production assembly.

FEATURES:

- Provides maximum heat dissipation for higher ambient temperatures
- Spring hook mount for easy installation
- Impact resistant PC lens
- Includes 6.5ft power input with leads
- Wet-location rated IP65

GENERAL SPECIFICATIONS:

VOLTS: 120-277V

POWER FACTOR: >0.92

THD: <10%

AVERAGE RATED LIFE: 50,000 hours

DIMMING*: 0-10 with max 2 mAmps sink current

SURGE PROTECTION: 6 kV

CRI: >80

CCT: 5000K

COLOR: Black

AMBIENT TEMP: -40° F to 122° F



APPLICATIONS:

- Suitable for wet locations
- Warehouse, industrial, big box retail, farming, gymnasiums

LENS FEATURES:

- Impact and heat resistant polycarbonate lens material
- More than 93% light transmittance
- IK07 Impact Rating



CONTACT US TODAY!

info@cm.lighting

1-877-826-5444



C&M LIGHTING

Dimmable LED High Bay Light

WEIGHT:

100W and 150W: 5.18 lbs
200W: 7.23 lbs

DIMENSIONS:

100W/150W: 12.6" Dia. x 4.13" Depth
200W: 14.2" Dia x 4.13" Depth

SPECIFICATIONS/ORDER INFORMATION

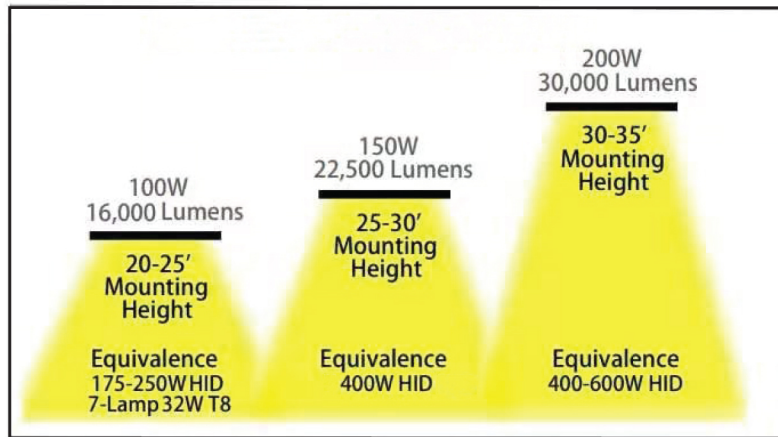
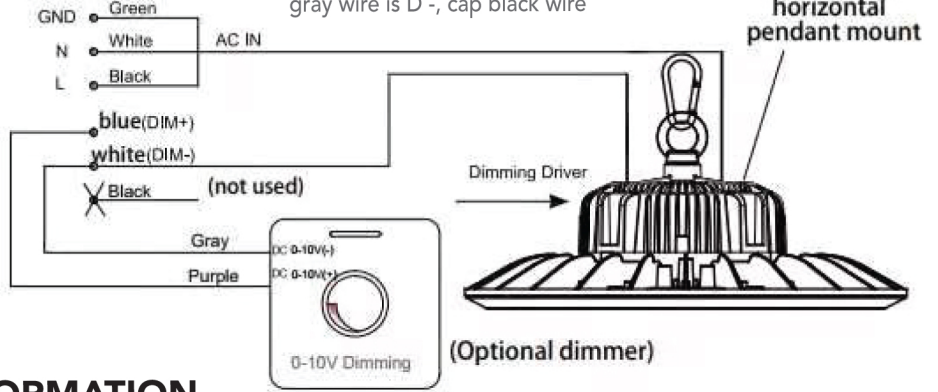
& ENERGY SAVINGS: (Based on 12 hours a day and .11/kwhr)

CATALOG NUMBER	UPC CODE	CASE QTY	WATTS	INPUT AMPS
UFO-100	00850010602035	1	100	1.1
UFO-150	00850010602011	1	150	1.7
UFO-200	00850010602028	1	200	2.2

LUMENS	LUMENS PER WATT	ENERGY SAVINGS, WATTS	YEARLY SAVINGS	5 YEAR SAVINGS
16,000	160	150	\$72.27	\$361.35
22,500	150	250	\$120.45	\$602.25
30,000	150	400	\$192.72	\$963.60

DIMMER CONNECTION:

1. Compatible with 0-10V dimming
2. Connect wires as below, purple wire is D +, gray wire is D -, cap black wire



*Dimming with standard 0-10V control system or wall dimmers such as Leviton IP710, DS710, or Lutron DVSTV. Dimming complies with IEC60929 Annex E

**HID equivalent and recommended mounting height may vary and depend on application required illuminance

This device complies with part 15 of the FCC Rules. Operation is subject to the following two conditions: (1) This device may not cause harmful interference and (2) this device must accept any interference received including interference that may cause undesired operation. Fixture may not be compatible with all dimmers. Specifications subject to change without notice.

CONTACT US TODAY!
info@cm.lighting
1-877-826-5444