



# NANCY'S NOTIONS

LET YOUR CREATIVITY FLOW

## Elf Booties

Create a pair of darling elf booties in an afternoon. They are the perfect addition to whimsical holiday decorating. Or, use them as gifts with surprises and treats tucked inside.

Approximate Finished Size: 2½" wide x 3½" tall x 7" long

### Supplies Needed:

- Two 12" x 18" rectangles Fabric A (booties)
- One 12" x 18" rectangle Fabric B (bootie sole)
- One 12" x 18" rectangle Fabric C (bootie cuff)
- Coordinating all-purpose thread
- Scraps of polyester fill or batting (stuffing)
- Optional: Decorative buttons, pins, or jingle bells

Note: You'll be able to create two pair of elf booties from the fabrics listed above.

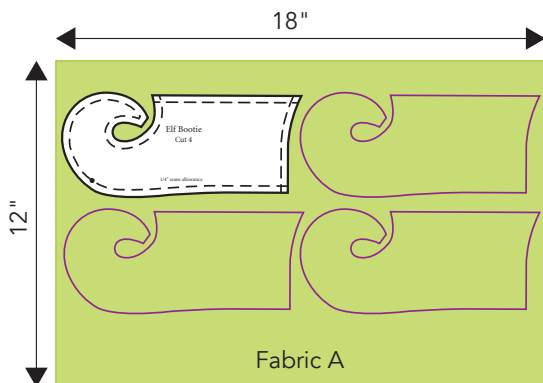
### Helpful Notions:

- Scissors
- Erasable fabric marking pen or pencil
- ¼" piecing foot, such as Little Foot™ or ¼" Patchwork Foot
- Turning tool, such as Precision Turning Tool
- Hand sewing needle

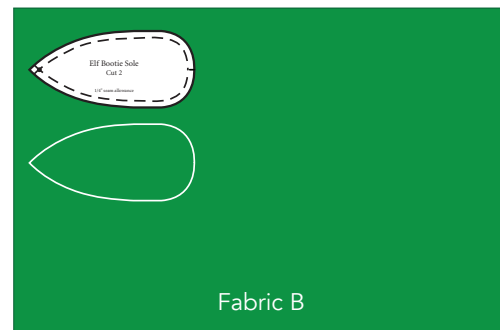
### Instructions:

Read all instructions before beginning project. Seam allowances are ¼" unless otherwise stated.

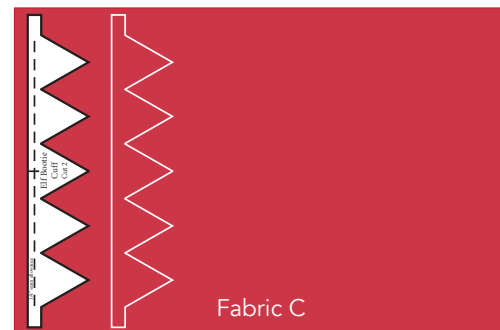
1. Prepare pattern and cut out booties:
  - Print, then cut out paper pattern pieces.
  - From Fabric A cut out four bootie pieces.



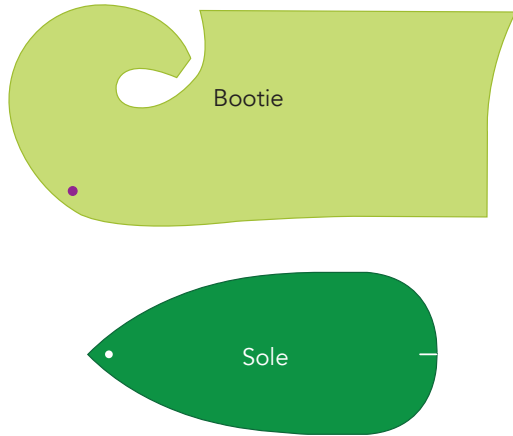
- From Fabric B cut out two bootie sole pieces.



- From Fabric C cut out two bootie cuff pieces.

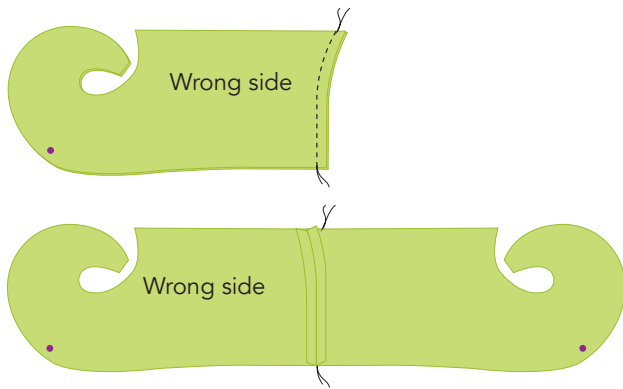


- Transfer pattern markings to cut fabric pieces using erasable marking pen.

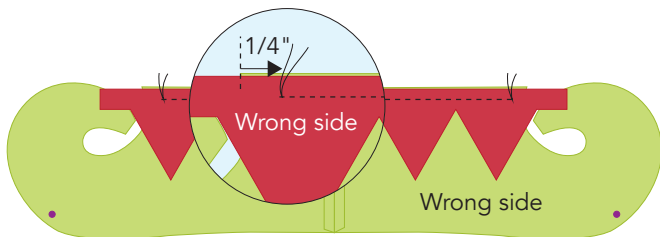


## 2. Assemble bootie:

- Placing right sides together, stitch center back seam. Finger press seam open.

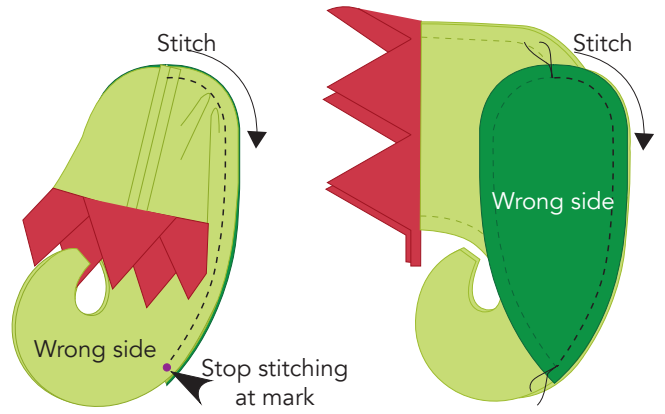


- Add cuff:
  - Place right side of cuff to wrong side of bootie, aligning upper cut edges and center backs.
  - Stitch along aligned upper edges, beginning and ending stitching a generous 1/4" from bootie center front corners.

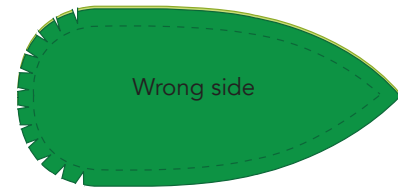


- Attach bootie sole:
  - Place bootie to bootie sole, right sides together, aligning cut edges and matching center backs.

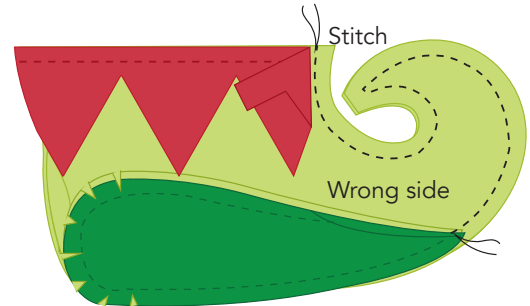
- Stitch from center back to toe dots.



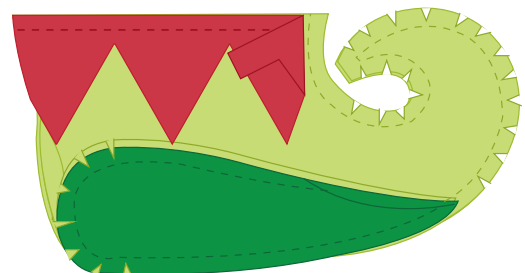
- Clip curved seam allowances.



- Complete bootie toe:
  - Fold back both cuff front extensions to allow for center front bootie stitching.
  - Align center fronts and toe curl, right sides together. Pin.
  - Stitch from upper edge to toe dots, removing pins as you sew.



- Clip curves of seam allowances as illustrated, cutting close to, but not through the stitching.

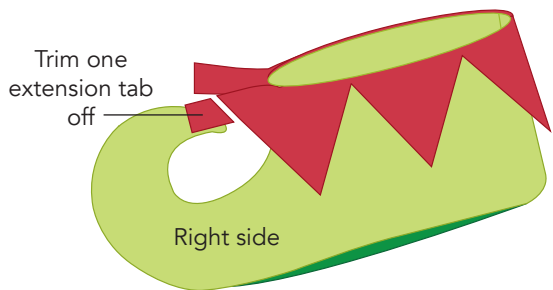


- Optional: Trim seam allowance of toe curl to a generous 1/8" for easier turning.

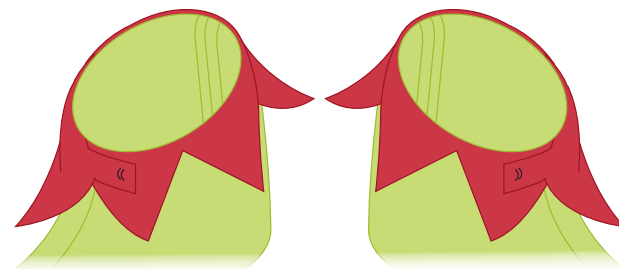
## 3. Repeat steps to assemble second bootie.

4. Finish Elf Bootie:

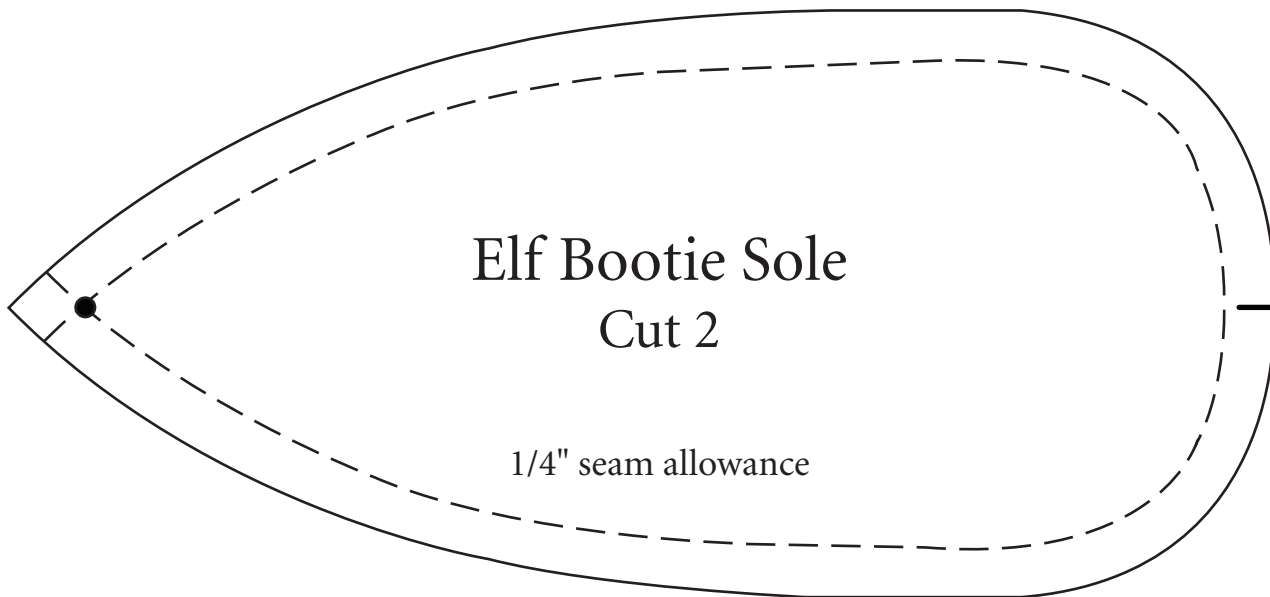
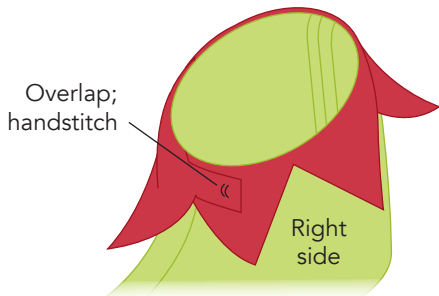
- Turn bootie to right side, using a turning tool to gently shape the curled toe.
- Trim one cuff extension tab off, cutting even with cuff point angle. Smooth over bootie front. Pin in place.

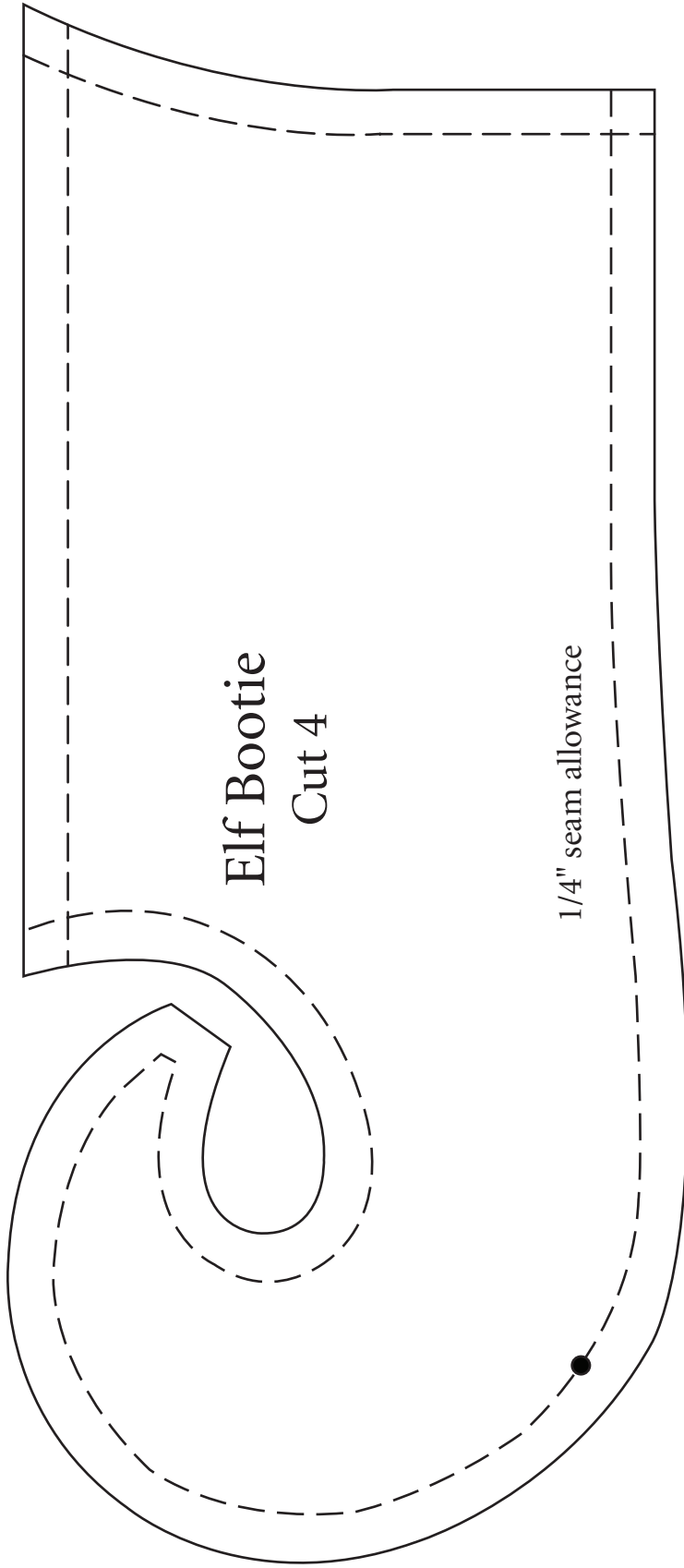


- Add a decorative button, pin, or jingle bell to the overlapping tab.
- Repeat for second bootie, trimming the opposite cuff extension to create right and left booties.



- Fold remaining cuff tab over trimmed front cuff, pin, and hand stitch in place at center front.





**Elf Bootie  
Cut 4**

1/4" seam allowance

