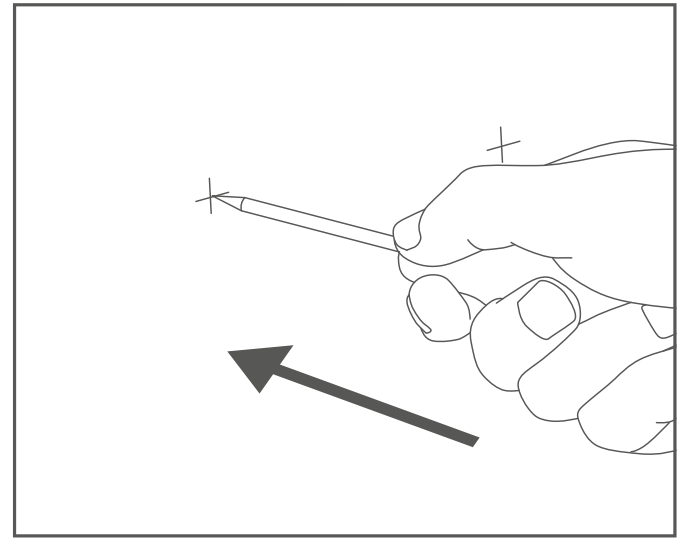
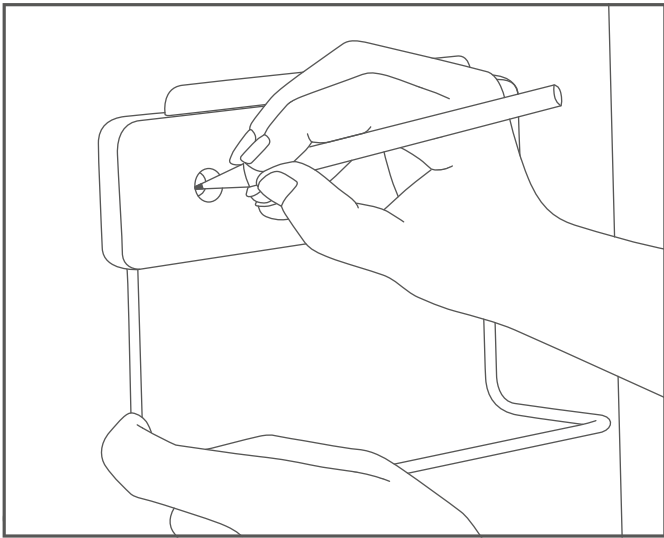
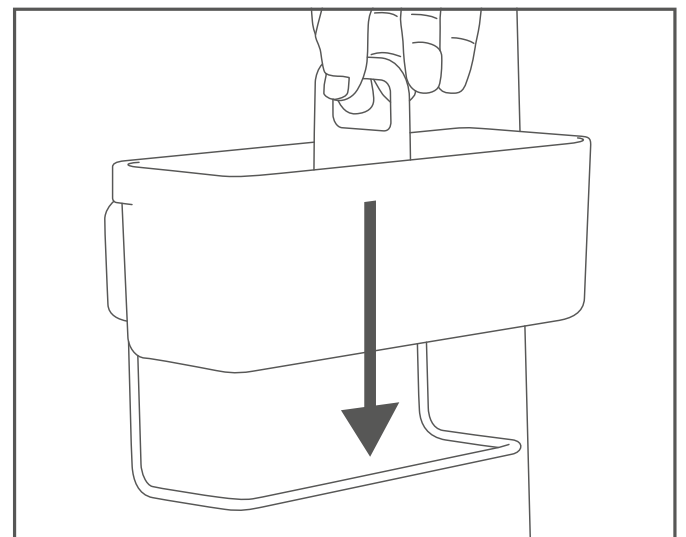
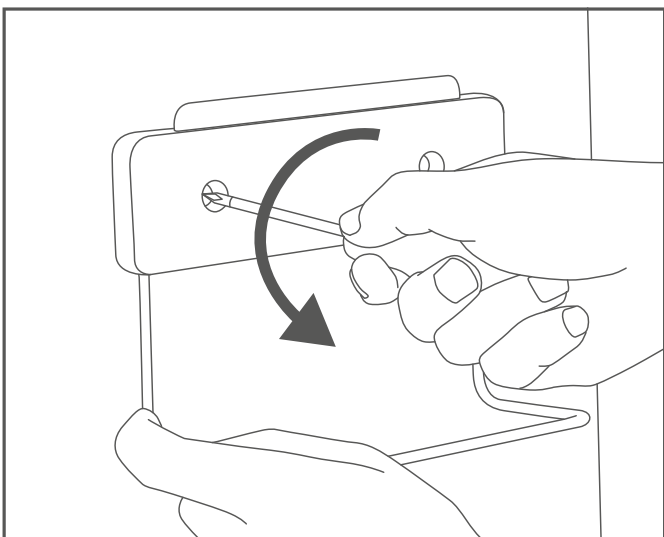


How to install



- 1** Place bracket onto door and lightly mark position of screw holes with a pencil.
Important: Ensure there is enough clearance to hang/store items and also to close cupboard door when caddy is attached.

- 2** Remove bracket and make a small hole at each pencil mark with a bradawl.



- 3** Replace bracket and fix into place using screws provided.

- 4** Hang caddy onto bracket.