

# M's RAM AIR SYSTEM

CARBON DUCT INTAKE KIT

## Installation Instructions

FR-0525

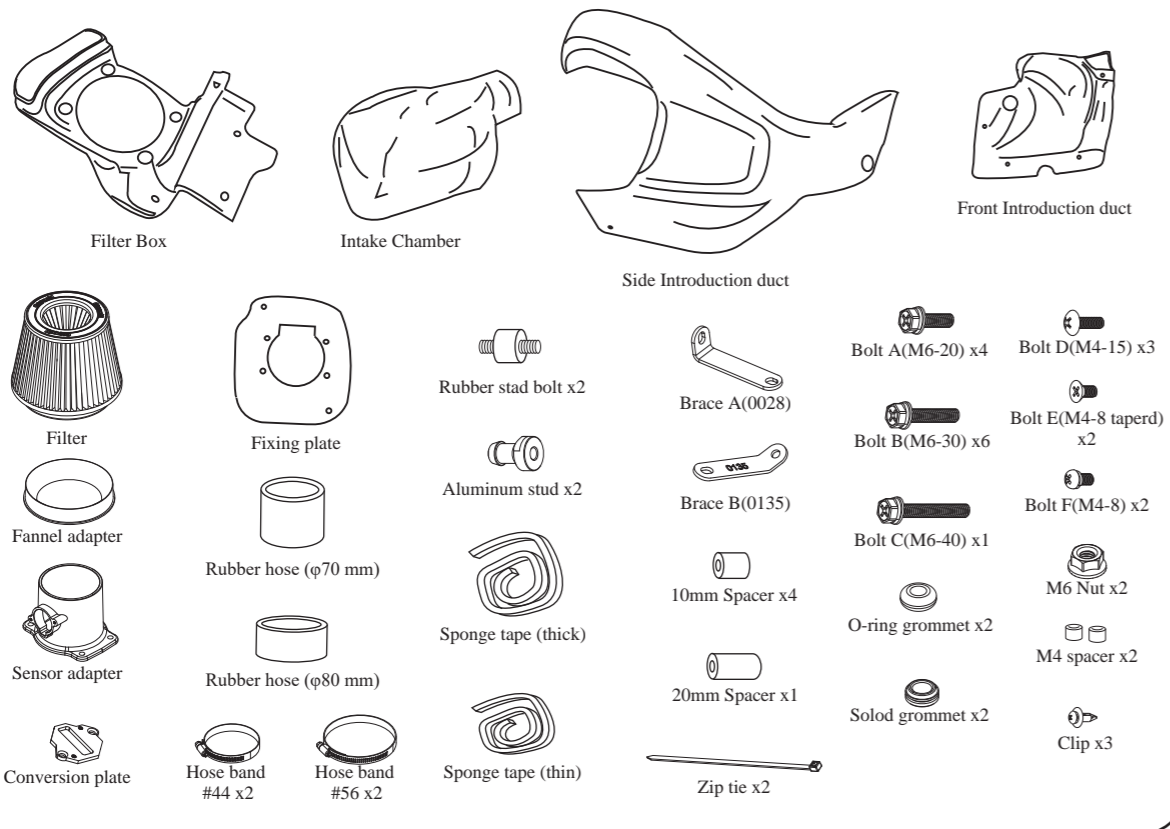
HONDA CIVIC Type R (FK8)

Thank you for buying the M's Ram Air System.  
Before installation, verify that you have all of the parts in the Parts List on the right.



- Do not install on a road or other place that could interfere with automobile or pedestrian traffic.
  - Park on flat, horizontal ground with the emergency brake on, to prevent the vehicle from rolling. Remove the key from the ignition and let the engine cool down completely before beginning installation.
  - Wear work clothes suitable for the job. When necessary, wear protective gloves and glasses.
  - After installation, regular maintenance is necessary. Periodically check for realignment, clearance, and tightening of all components.
  - GruppeM Inc. will not be held responsible for installations to any motor vehicle model other than the one specified.
  - Keep these instructions in a safe place after using them.
- Speeding and reckless driving are completely unacceptable. Please use this product with care, following all traffic regulations.

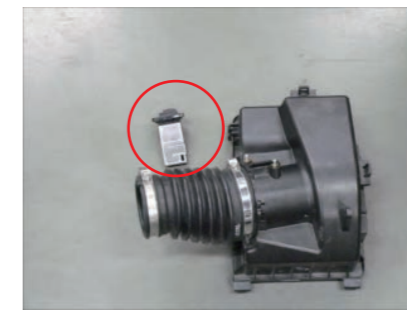
### PARTS LIST



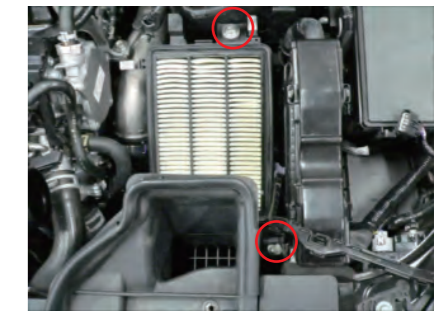
### Installation of ram air system



1. Remove the top of the air cleaner box.



2. Remove the air mass sensor from the air cleaner box.



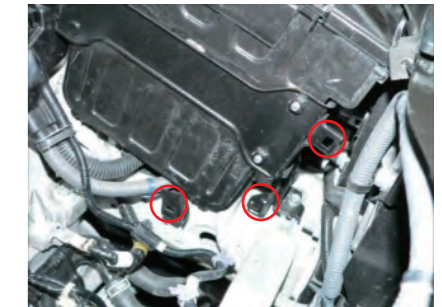
3. Take out the lower part of the box by removing the 2 bolts holding it in place.



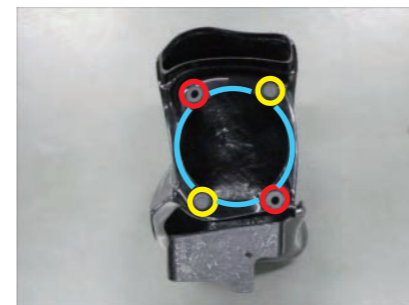
4. Remove the grommet from the bottom of the box.



5. Remove the fuse box bolt.



6. Disconnect the three connectors of circled in red. The Wiring interferes with other work, route it around the battery.



7. Attach the grommet and sponge tape.  
Red : O-ring grommet  
Yellow : Solid grommet  
Blue : Sponge tape (thick)  
Cut and attach the sponge tape.



8. Attach the thin sponge tape around intake port as shown.



9. Port the original grommet removed in step 4.



10. Attach the rubber stud bolts to the location circled in red

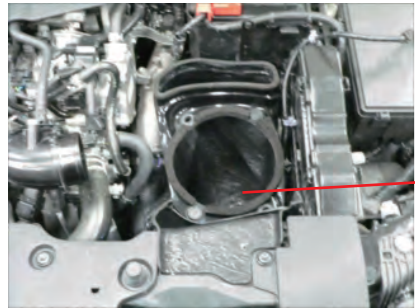


11. Attach brace A(0028) on the rubber stud bolt with the nut in the direction circled in red.

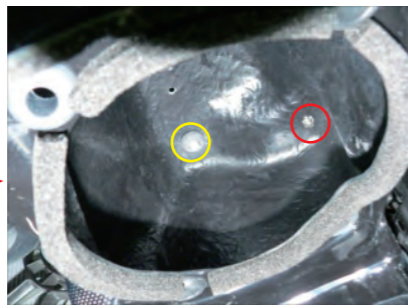


12. Place the 20 mm spacer under brace B(0135) and secure it using bolt C.

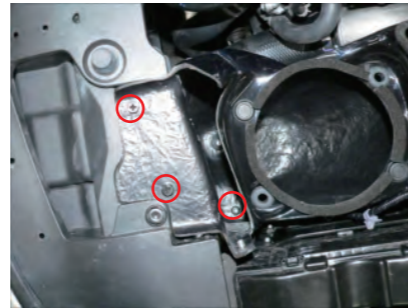
# Installation Instructions FR-0525



13. Install the lower carbon filter box on the vehicle. See Figure



14. Inside the box  
Red : Thread of rubber stud bolt  
Yellow : Insert the convex for fixing into the grommet.



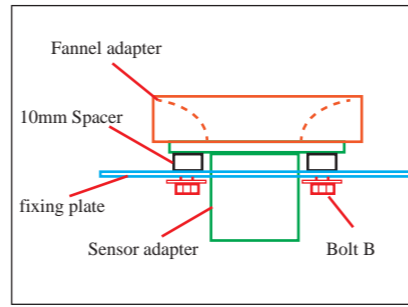
15. Secure the filter box using the bolt A and attached nuts.



16. Fix the aluminum stud to the fixing plate with bolt B. (Please pay attention to the orientation of the plate)



17. Install the 10 mm spacer between the plate and the sensor adapter. Attach the funnel adapter and sensor adapter with the 4 x bolt B. (See the right figure)



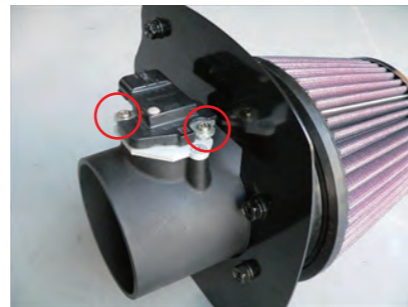
18. Illustration of parts assembly.



19. Install conversion plate with bolt E (tapered).



20. Attach the filter.



21. Place the M4 spacer between the conversion plate and the air mass sensor, and secure with the bolt F.



22. Attach a rubber hose to each end of the chamber as shown. Insert the  $\phi 80$  hose all the way back and temporarily tighten with band #56. Place the head of the screw on the hose band in the same direction as shown.



23. Connect the sensor adapter assembly to the hose. Temporarily tighten the hose band so that it turns a little.



24. Place the chamber assembly in the filter box once to orient the chamber.



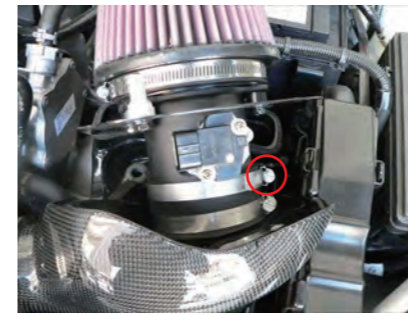
25. Orient the chamber so that the two aluminum studs in the plate firmly pierce the O-ring grommet on the filter box.



26. Completely tighten the hose band in the direction indicated by the red arrow once the chamber is properly fitted.



27. Remove the chamber assembly once. Lift the chamber and fixation plate together and remove.



28. Check that the hose band has not slipped off and retighten the band.



29. Re-install the intake chamber assembly again and tighten the hose band.



30. Install the front introduction duct as circled in red.



31. Attach the front introduction duct.  
Red : Bolt D  
Yellow : Clip



32. Route the air mass sensor wiring as indicated by the red line and secure it with a zip tie.



33. Attach the wiring coupler to the air mass sensor.



34. Secure the side introduction duct to the filter box from above and secure it to the brace with bolt A.



35. Secure the side introduction duct to the front introduction duct using bolt D.



36. Retighten each part and double-check installation.