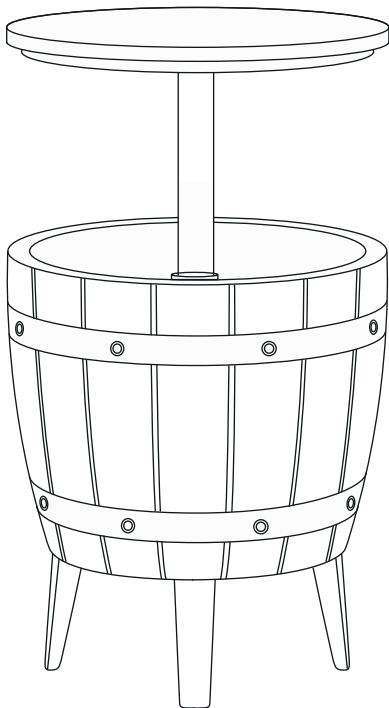


# PATIO COOL BAR TABLE



**Instruction Manual**

**\*THE DIAGRAM IS FOR REFERENCE ONLY**




### IMPORTANT

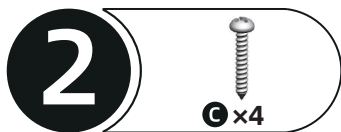
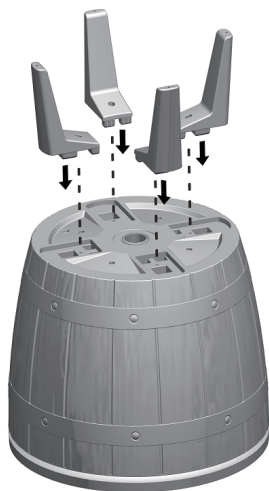
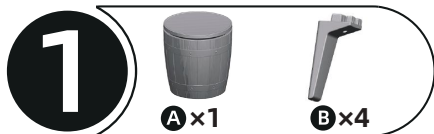
- READ ALL INSTRUCTIONS BEFORE ASSEMBLING.
- CHECK PARTS AND THE ENCLOSED HARDWARE BAG WITH THE HARDWARE LIST TO BE SURE ALL ARE INCLUDED AND QUANTITIES ARE CORRECT.
- PLEASE CONTACT CUSTOMER SERVICE IF YOU HAVE ANY PROBLEMS OR DISCOVER ANY MISSING PARTS.
- KEEP THESE INSTRUCTIONS FOR FUTURE REFERENCE.

### CARE & SAFETY

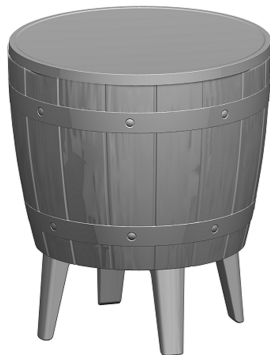
- DO NOT SKIP ANY STEP. IT IS OF UTMOST IMPORTANCE TO ASSEMBLE ALL OF THE PARTS ACCORDING TO THE DIRECTIONS.
- WEAR SAFETY-GOGGLES AND ALWAYS FOLLOW THE MANUFACTURER'S INSTRUCTIONS WHEN USING POWER TOOLS.
- STORE THE COOL BAR TABLE IN A CLEAN DRY PLACE.
- PLEASE DISPOSE ALL PACKAGING AND PLASTIC BAGS.
- DO NOT ALLOW CHILDREN UNDER 6 YEARS OF AGE TO USE THE PRODUCT.
- PLEASE FOLLOW ALL WARNING SIGN ON THE PRODUCT.

## ASSEMBLY PARTS

Item no.	Reference Image	Qty
<b>A</b>		<b>x1</b>
<b>B</b>		<b>x4</b>
<b>C</b>		<b>x4</b>



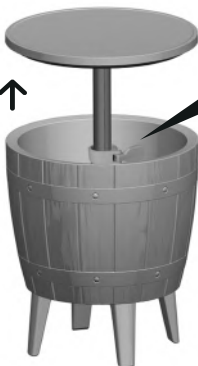
**3** Installation Completed



## Locking System



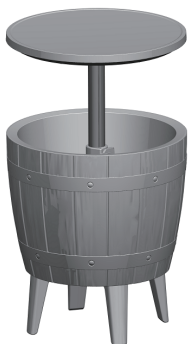
Pull to the Highest Level.



CLOSE



**⚠ PAY ATTENTION:**  
Please extend the table to the Highest Level and then lock into position.



OPEN



⚠ Keep out of reach of children to avoid injure.



### LIMITED 2-YEAR WARRANTY

The warranty is valid as of the date of purchase and a dated proof of purchase should be presented on request. Any product or part which fails due to structural defect or faulty workmanship, or which fails due to fading of color, for a 2-year period from the initial date of purchase.

This warranty does not include:

- Shelter that has been subjected to abuse, accident, alteration, modification, tampering, vandalism, negligence, misuse, abrasive contact, faulty installation, lack of reasonable care or if affixed to any attachment not provided with the shelter.
- Damage to the contents of shelter, any person or property is excluded.
- Normal and foreseeable wear and tear.
- Damage that occurs due to acts of nature, ie. hurricane, tornado, wind, flood, snow, wind driven debris, etc.
- Third party labor or installation fees of any kind are not recoverable under the warranty.
- Customer is responsible for all zoning issues and permits if required.
- Product not installed according to instructions provided.
- BLUU shall not be responsible for any damage caused by any reason whatsoever to goods stored in the Product.