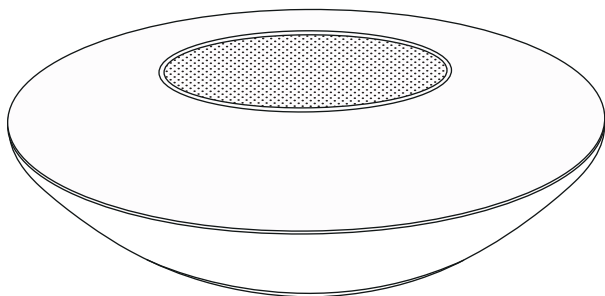


LED UMBRELLA LIGHTS

for Offset Umbrellas

ASSEMBLY INSTRUCTIONS



Instruction Manual

***THE DIAGRAM IS FOR REFERENCE ONLY**

Caution



DANGER

Please keep the product stay away from fire.


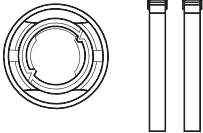
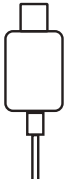
Please do not modify repair or disassemble the product.

Please Keep it in a dry and ventilated place, abstaining from moistness.

Please make sure whether the charging voltage is suitable for the product.

The product will lose power if it is shelved for long time. It is recommended to charge the Light before use.

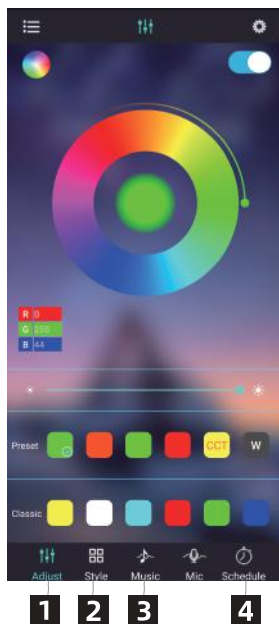
Parts List

Item no.	Reference Image	Qty
Lights		x1
Nylon Snap Button with 2 Elastic Velcro Tapes		x1
USB Charging Cable		x1

App Control



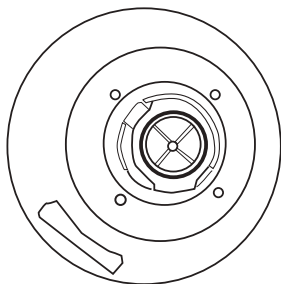
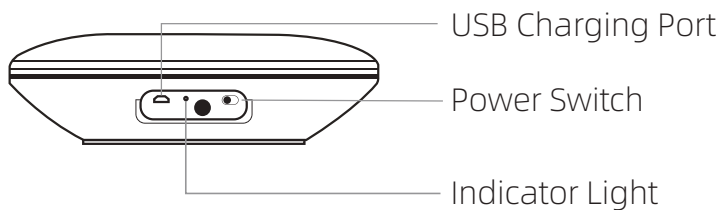
Please search and download the Lotus Lantern App on Google Play or App Store. For how to use the App to connect to the light, please follow the instructions on the App, or see the instructions on Page 7.



After establish Bluetooth connection (see P7) and enter the App, you could do the following:

- 1** Adjust lighting Color and Brightness
- 2** Lighting styles such as Flashing Lights
- 3** Play music with the jumping lighting style
(the jumping style will change with different music)
- 4** Schedule to turn on and off the Bluetooth light

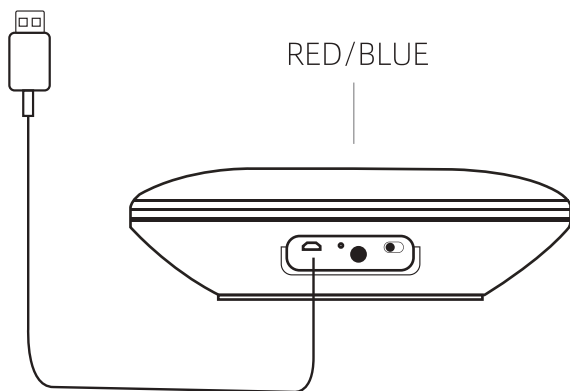
The Bluetooth Light

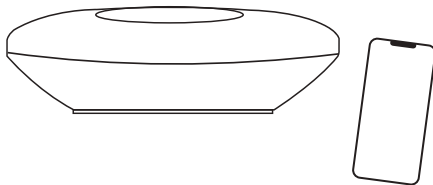


The screw part of back design could match with all the Offset Patio Umbrellas in our online store

About Charging

Please use the USB charging cable to charge the Color Light. When put the Light on charge, the indicator light is red. After the light is fully charged, the indicator light becomes blue.



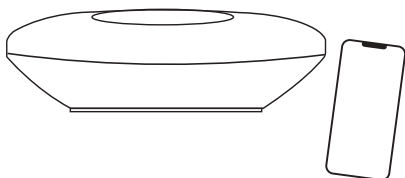


Step 1: Bluetooth Pairing Mode

The light will automatically enter Bluetooth pairing mode when it is switched on. The indicator light will flash blue up to 5 minutes with a voice prompt “Bluetooth Mode” . Please connect the lights within 5 minutes or the Bluetooth connection will be unavailable after 5 minutes. If the Bluetooth connection is unavailable after 5 minutes, please then turn on the light again to enter the Bluetooth pairing mode.

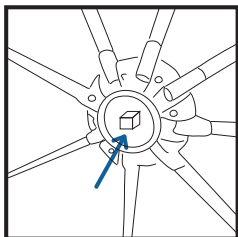
Step 2: Bluetooth Pairing

Search for “DFSSS01” in the Bluetooth setting on your device, or browse available Bluetooth devices and click on connect when “DFSSS01” pops out. Enter “0000” if prompted for a password. Once the Bluetooth connection is established, the indicator light will stop flashing and keep on blue color.

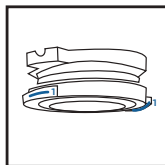
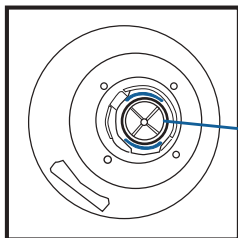


1. The light will automatically connect to the media device that paired last time after switching on.
2. The light cannot establish Bluetooth connection with two media devices at the same time.
3. Once your media device is paired with other Bluetooth devices, it can no longer establish connection with the BLUU light.

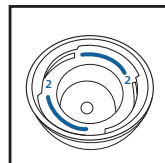
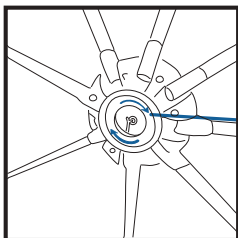
Attaching the Light on Offset Umbrellas (Only Our Offset Umbrellas)



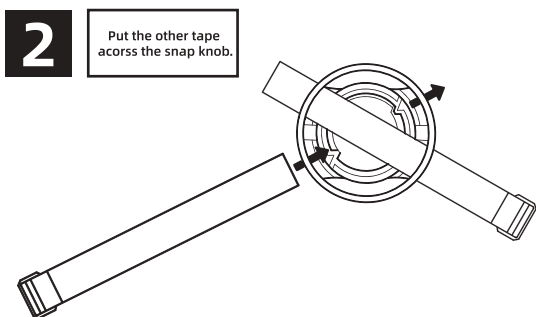
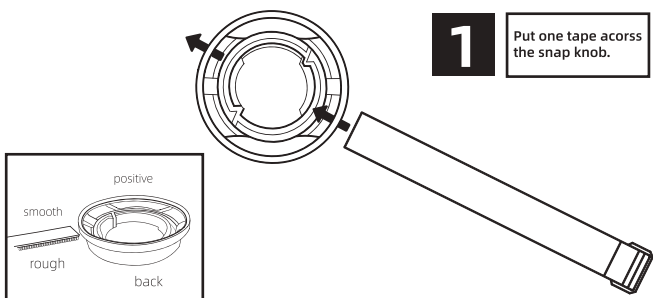
Please open the cap on the center of frame
(Only Our Offset Umbrellas)

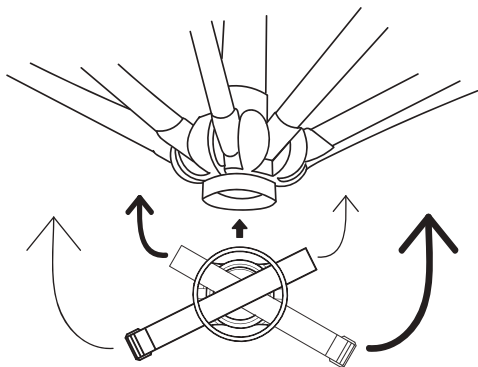


1 Then please match the back side of
the light (1) with the opened center
of frame (2) and screw the light tightly.



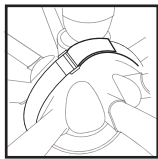
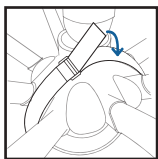
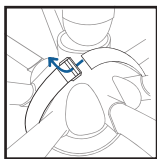
Attaching Color Light on Offset Umbrella by Nylon Knob and Hook and Loop



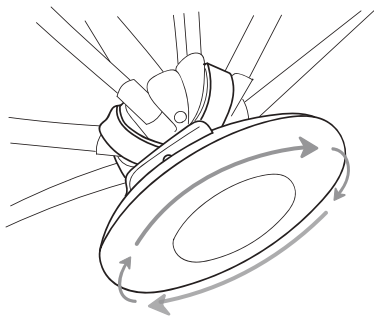


3

Put the light under the frame of offset umbrella and make the hook and loop tapes across the frame and get them fixed.



x2



4

Put the color light on the snap knob and screw it tightly.

Frequently Asked Questions

1.Q: Why can't it connect to my phone?

A1: The light does not enter Bluetooth pairing mode and so please restart the light.

A2: There are too many Bluetooth device around and so please turn off other Bluetooth devices.

A3: Other device is connected to the light and so please disconnect the previous device and reconnect your device.

2.Q: Why the volume is so low?

A1: The volume setting of your media device is not high enough and so please check it and turn it up.

A2: The power of light runs out and please recharge it.

3.Q: Why the music is on and off continuously?

A1: The distance between the light and your media device is too far and please keep it within 32 ft.

A2: There are large obstacles between the light and your media device.

4.Q: Why the indicator light is not on?

A1: The power of light runs out and please recharge it.

A2: Please restart the light.

5.Q: Why the light speakers do not play music after the Bluetooth connection is established?

A1: The light closes pairing mode after it stops playing music for 5 minutes and so please press the Bluetooth speaker center metal grille to evoke the Bluetooth.

6.Q: Why couldn't I control the light using the App?

A1: The light automatically enters stand-by mode in 5 minutes after the App closes. Please touch the Bluetooth speaker center metal grille to evoke the light control function.

A2: Please reopen the light.

Specifications of Light

Operating Voltage: 3.7V

Charging Voltage: 5V

Lithium Battery: 2500mAh

Charging Time: About 4 Hours

Material: ABS, PP, Metal

Size: ϕ 5.90X1.88 inch

Weight: 0.48 lb

Output Power: 3 Watts

Speaker: ϕ 2.04 in, 4 Ohms

THD: \leq 0.5%

SNR: \geq 65dB

Frequency Response: 50HZ~20KHZ

Bluetooth Protocol: A2DP1.2

Bluetooth Frequency: 2.4GHZ~2.8GHZ

Bluetooth v4.2

Bluetooth Distance 32.8 ft