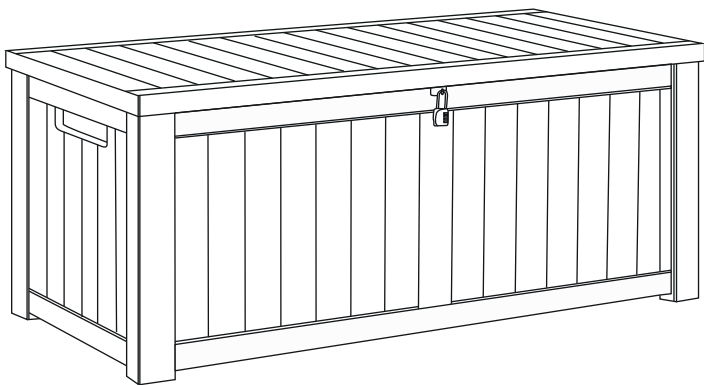


# 120 GALLON DECK BOX

## ASSEMBLY INSTRUCTIONS



**Instruction Manual**

**\*THE DIAGRAM IS FOR REFERENCE ONLY**












**IMPORTANT:**

- READ CAREFULLY AND KEEP FOR FUTURE REFERENCE.
- PLEASE CONTACT CUSTOMER SERVICE IF YOU HAVE ANY PROBLEMS OR DISCOVER ANY MISSING PARTS.

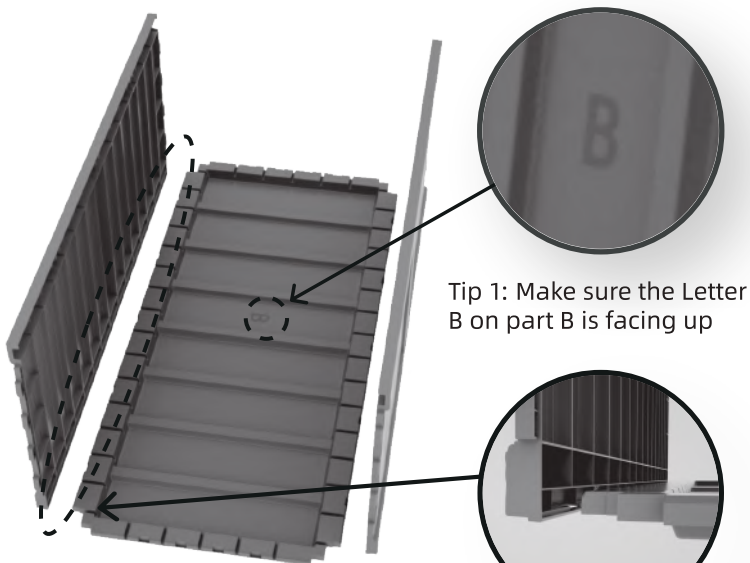
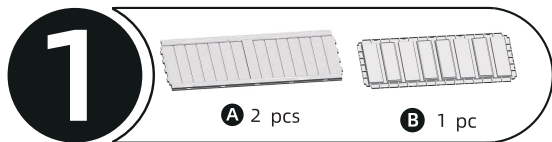
**CARE & SAFETY**

- To prevent risk of suffocation, do not allow children to play inside the box.
- Do not skip any step. It is of utmost importance to assemble all of the parts according to the directions.
- In case of fire, do not attempt to extinguish any burning polypropylene with water.
- Wear safety-goggles and always follow the manufacturer's instructions when using power tools.
- Using a stiff brush or abrasive cleaner could damage box.
- Hot items such as recently used grills, blowtorches, etc. must not be stored in the box.
- Unsuitable for storage of flammable or corrosive substances.
- Do not stand on lid.

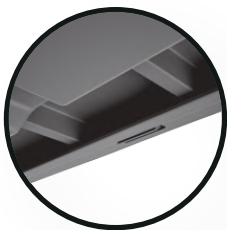
# ASSEMBLY PARTS

Item no.	Reference Image	Qty
<b>A</b> FRONT &BACK		x2
<b>B</b> BOTTOM		x1
<b>C</b> SIDE		x2
<b>J</b> TOP		x1
<b>E</b>		x3
<b>H</b>		x2
<b>D</b>		x3
<b>G</b>		x1
<b>I</b>		x1
<b>N</b>	 ST3.9 X 19mm	x39
<b>T</b>		x7

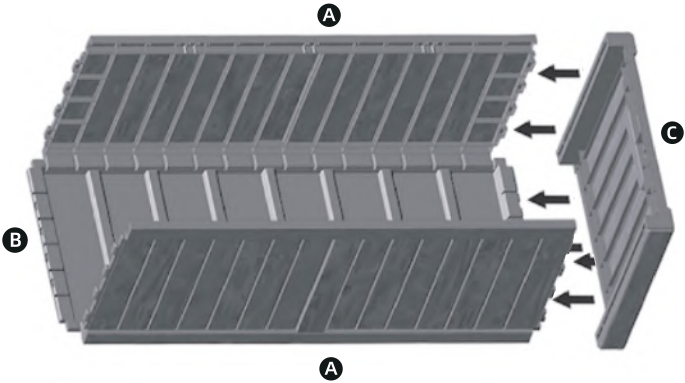
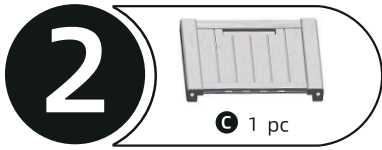
**ATTENTION:** The whole installation process requires at least 2 people to ensure safety and sturdiness.



**Click!**



Tip 2: USE SOME strength and make sure Parts A and B are securely clicked together.

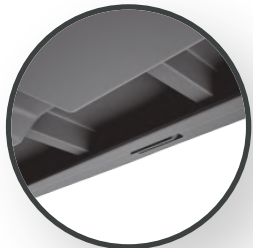


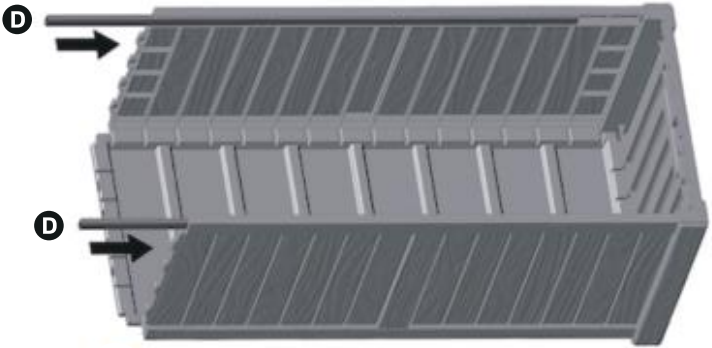
**Only Insert one Part C to Parts A and B.  
DO NOT insert another Part C in this step!**

(Need some strength to ensure sturdiness and leakproofness)

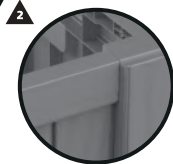
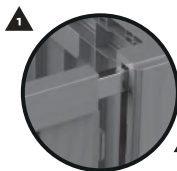
Make sure the hooks on the left side of Part B stuck in to the bottom of Part C (see image below)

**Click!**





Insert two iron rods (Part D) into the top of two Part A.



So far you have one Part C left. Go ahead and install it to Parts A and B

(Need some strength to ensure sturdiness and leakproofness)

Make sure the hooks on the short side of Part B stuck into the bottom of Part C



**Click!**

# 5



**N** 7 pcs



**T** 3 pcs



**I** 1 pc



### \*\*\*IMPORTANT

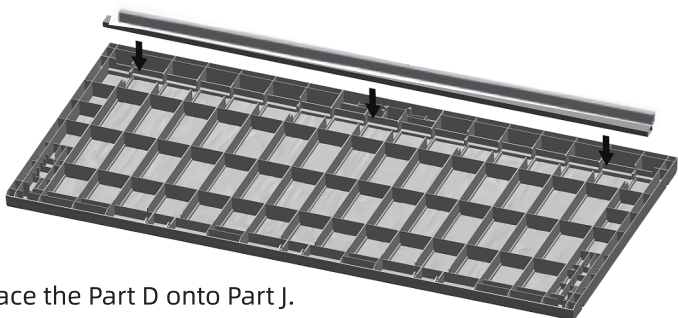
Step 1: Use 6 screws to screw 3 Part T on to one of the iron rods. Please choose the two holes on the right side. **DO NOT** screw another iron rod in this step!

Step 2: Use one screw and screw Part I on to the top-middle area of Part A, right beside Part T.

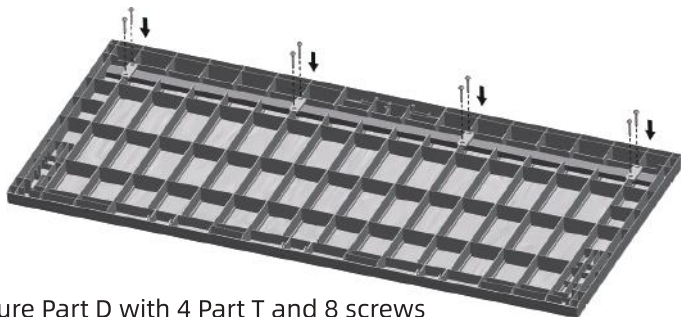
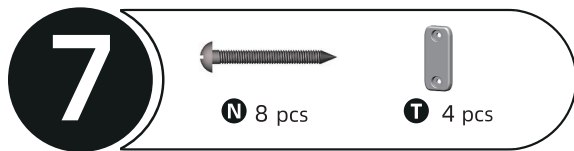
**AGAIN**, leave another iron rod **UNSCREWED** in this step.







Place the Part D onto Part J.



Secure Part D with 4 Part T and 8 screws

This step prevents the lid from bending causing by the sun exposure and temperature variation.

# 8



**N** 2 pcs



**E** 3 pcs



**J** 1 pc



**G** 1 pc

You are ... Part E, Part G and 1 screw in this step.

**\*\*\*IMPORTANT:**

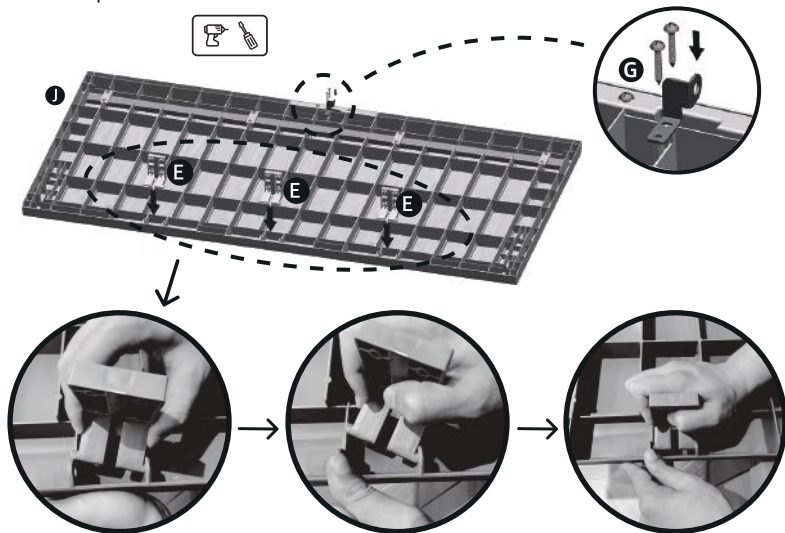
a. First, insert 3 Part E's onto Part J.

Below are the illustrations:

Step 1: Insert one side of Part E into one hole on Part J first.

Step 2: Use your thumb to push left to make some room for the other side of Part E.

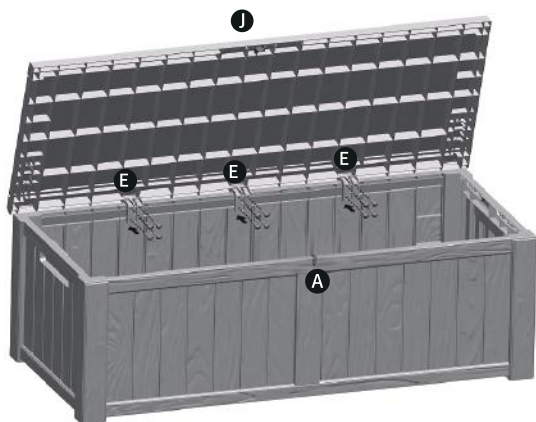
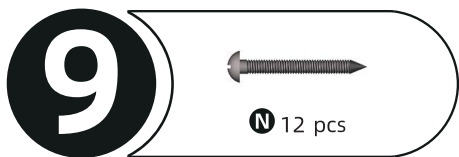
Step 3: Insert the other side of Part E into the hole.



Insert other 2 Part E's using the same method above.

DO NOT use too much strength, otherwise the parts would be damaged.

**DANGEROUS:** The partner should ALWAYS hold Part J to ensure safety.



Remember you left one iron rod unscrewed in Step 5.

In this step, you need to have your partner to hold Part J for you to ensure safety and easy assembly.

Like you can see from the picture in detail, use four screws to install each Part E onto Part A.

By doing this, the iron rod on this side is also secured.

# 10



**N** 10pcs

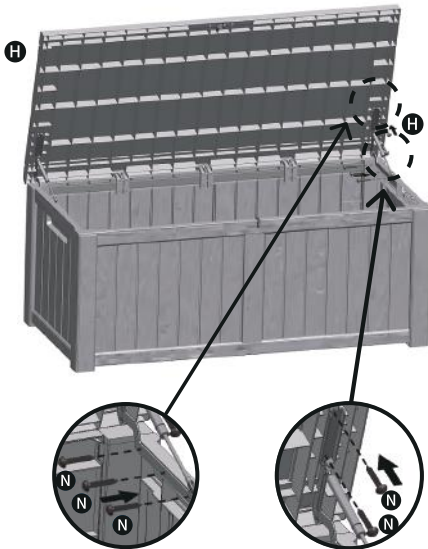


**H** 2 pcs

Your partner should always hold Part J during the whole process to ensure safety.

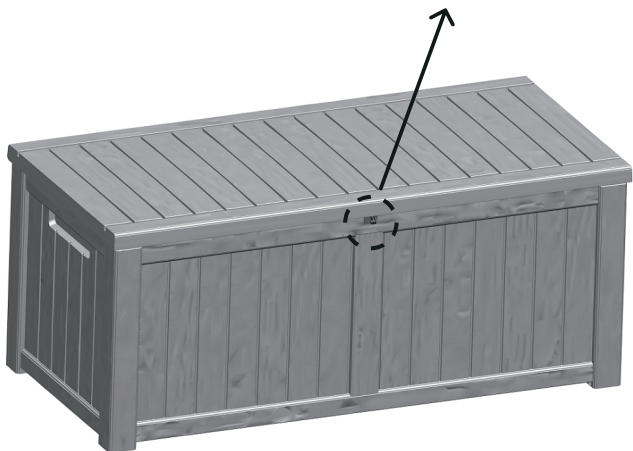
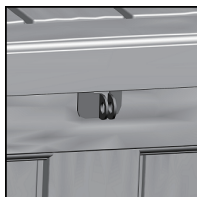
## Installing the pressure bars

**\*\*\*IMPORTANT\*\*\***



Use 5 screws for each side to install each pressure bar on Part C and Part J

11



Installation Completed

## **LIMITED 2-YEAR WARRANTY**

The warranty is valid as of the date of purchase and a dated proof of purchase should be presented on request. Any product or part which fails due to structural defect or faulty workmanship, or which fails due to fading of color, for a 2-year period from the initial date of purchase.

### **This warranty does not include:**

- Shelter that has been subjected to abuse, accident, alteration, modification, tampering, vandalism, negligence, misuse, abrasive contact, faulty installation, lack of reasonable care or if affixed to any attachment not provided with the shelter.
- Damage to the contents of shelter, any person or property is excluded.
- Normal and foreseeable wear and tear.
- Wear of fabric due to improper installation of cover & doors.
- Damage that occurs due to acts of nature, ie. hurricane, tornado, wind, flood, snow, wind driven debris, etc.
- Third party labor or installation fees of any kind are not recoverable under the warranty.
- Customer is responsible for all zoning issues and permits if required.
- Product not installed according to instructions provided.
- BLUU shall not be responsible for any damage caused by any reason whatsoever to goods stored in the Product.