

CERTIFICATE OF ANALYSIS

PRODUCT NAME: Certified Organic CBD Salve
PRODUCT STRENGTH: 1000 mg
SALVE BATCH: 20281-02
BEST BY DATE: HEMP 10/08/2022
EXTRACT LOT [B0914-001](#)

Click on the links to view third-party reports

Physical Attributes

Test	Method	Specification	Results
Color	SOP-100	Off-white, cream color	PASS
Odor	SOP-100	Neutral scent w/hint of hemp oil, sweet beeswax	PASS
Appearance	SOP-100	Firm textured salve in white roll-on container with cap	PASS
Primary Package Eval.	SOP-132	Container clean and free of filth. Container caps tight and shrink bands intact	PASS
Secondary Package Eval.	SOP-132	Labeling Compliance Checked, Cartons sturdy and clean. Sufficient cushion material exists. Box taped and secure.	PASS

Review of Third-Party Analysis

Panel	Method	Specification	Results*	Pass/Fail
Potency - Total CBD	SOP-111	1000-1300mg CBD LOQ**: 10 PPM† (0.001%)	1029.1 mg	PASS
Potency - D9-THC	SOP-111	None Detected LOQ: 10 PPM (0.001%)	ND	PASS
Compliant Pesticide Panel	SOP-111	WIP-100008 : Product specification for Tinctures, Oregon Action limits apply	ND	PASS
Microbial - Stec E.Coli	SOP-111	Complies with USP 61/62	Below LOQ	PASS
Microbial - Salmonella	SOP-111	Complies with USP 61/62	Below LOQ	PASS
Microbial - Yeast and Mold	SOP-111	Complies with USP 61/62	Below LOQ	PASS
CA Compliant Heavy Metal Panel	SOP-111	Arsenic (As): ≤1.5 PPM Cadmium (Cd): ≤0.5 PPM Mercury (Hg): ≤1.0 PPM Lead (Pb): ≤0.5 PPM	ND	PASS

**Level of Quantitation, † Parts Per Million

Quality Certified Kei Horikawa 10/20/2020
 Kei Horikawa Date
 Quality Control Manager



total cannabinoids	Δ^9 -THC	THCa	total THC
1054 mg	0.0 mg	0.0 mg	0.0 mg
per	CBD	CBDa	total CBD
2oz	1029.1 mg	0.0 mg	1029.1 mg

Lot# 20281-02

This Product Has Been Tested and Complies with 7USC1639o(1) Definition of Hemp



Stillwater Laboratories

https://portal.a2la.org/scopepdf/4961-01.pdf

Sample Handling

test ID	sample wt	56.8 g
type	order	8585
lab ID	sample date	10/9/2020
unit	unit weight	56.8 g

Methods

method	equipment
weights	MSP-7.3.1.3 AUX120.1
potency	MSP-7.5.1.5 LC-2030
terpenes	MSP-7.5.1.7 QP2020/HS20
pesticides	MSP-7.5.1.8 LC-8060
mycotoxins	MSP-7.5.1.8 LC-8060
microbial	MSP-7.5.1.1 AriaMx/Hardy
solvents	MSP-7.5.1.6 QP2020/HS20
metals	MSP-7.5.1.1 ICPMS2030



Potency	per	2oz	estimated error	Terpenes	%	estimated error	%	estimated error	%	estimated error
tetrahydrocannabinolic acid (THCa)	0%	0.0 mg	± 0.93 mg	terpenes not tested / not required						
Δ^9 -tetrahydrocannabinol (Δ^9 THC)	0%	0.0 mg	± 0.93 mg							
Δ^8 -tetrahydrocannabinol (Δ^8 THC)	0%	0.0 mg	± 0.93 mg							
tetrahydrocannabivarin (THCv)	0%	0.0 mg	± 0.93 mg							
cannabidiolic acid (CBDa)	0%	0.0 mg	± 0.93 mg							
cannabidiol (CBD)	1.81%	1029.1 mg	± 7.18 mg							
cannabidivarin (CBDv)	0%	0.0 mg	± 0.93 mg							
cannabigerolic acid (CBGa)	0%	0.0 mg	± 0.93 mg							
cannabigerol (CBG)	.04%	25.1 mg	± 1.45 mg							
cannabinol (CBN)	0%	0.0 mg	± 0.93 mg							
cannabichromene (CBC)	0%	0.0 mg	± 0.93 mg							

Solvents	MT limit	0KG92	LOQ	Pesticides (MT)	MT limit	0KG92	LOQ	Pesticides (other)	0KG92	LOQ
				abamectin	0.00 ppm	<10ppb		acephate	0.00 ppm	<10ppb
				acequinocyl	0.00 ppm	<10ppb		acetamiprid	0.00 ppm	<10ppb
				bifenazate	0.00 ppm	<10ppb		aldicarb	0.00 ppm	<10ppb
				bifenthrin	0.00 ppm	<10ppb		azoxystrobin	0.00 ppm	<10ppb
				chlormequat cl.	0.00 ppm	<10ppb		boscalid	0.00 ppm	<10ppb
				cyfluthrin	0.00 ppm	<80ppb		carbaryl	0.00 ppm	<10ppb
				diaminozide	0.00 ppm	<10ppb		carbofuran	0.00 ppm	<10ppb
				etoxazole	0.00 ppm	<10ppb		chlorantraniliprole	0.00 ppm	<10ppb
				fenoxycarb	0.00 ppm	<10ppb		chlorpyrifos	0.00 ppm	<10ppb
				imazalil	0.00 ppm	<10ppb		clofentazine	0.00 ppm	<10ppb
				imidacloprid	0.00 ppm	<10ppb		cypermethrin	0.00 ppm	<10ppb
				myclobutanil	0.00 ppm	<10ppb		diazinon	0.00 ppm	<10ppb
				paclobutrazol	0.00 ppm	<10ppb		dichlorvos	0.00 ppm	<10ppb
				pyrethrins	0.00 ppm	<10ppb		dimethoate	0.00 ppm	<10ppb
				spinosad	0.00 ppm	<10ppb		etofenprox	0.00 ppm	<10ppb
				spiromesifen	0.00 ppm	<10ppb		fenpyroximate	0.00 ppm	<10ppb
				spirotetramat	0.00 ppm	<10ppb		fipronil	0.00 ppm	<10ppb
				trifloxystrobin	0.00 ppm	<10ppb		flonicamid	0.00 ppm	<10ppb

Toxic Metals	MT limit	0KG92	LOQ
arsenic	2 ppm	0.0 ppm	<10ppb
cadmium	4.1 ppm	0.0 ppm	<10ppb
lead	1.2 ppm	0.0 ppm	<10ppb
mercury	0.4 ppm	0.0 ppm	<10ppb

Microbial	MT limit	0KG92	LOQ
<i>E. coli</i>	10 CFU	0 CFU	<10 CFU/g
Salmonella sp.	10 CFU	0 CFU	<10 CFU/g
molds	10000 CFU	0 CFU	<10k CFU/g
Aflatoxin B1,B2,G1,G2	20 ppb	0 ppb	<20 ppb
Ochratoxin A	20 ppb	0 ppb	<20 ppb

Comments

All testing was completed onsite at 6073 US93N, Olney MT. Potency (cannabinoid concentration) is calculated from the equation: [cannabinoid] = [cannabinoid]_{HPLC} x volume_{dilution}/m_{dry}. Terpene concentration is calculated from the equation: [terpene] = (terpene mass)_{GCMS} / m_{dry}. Decarboxyted cannabinoid concentration is calculated from the equation XXX_{total} = 0.877 x XXX_a + XXX. Standards are used to calibrate the resulting data and estimate error using a standard estimate of error method; this is combined with error from weighing and dilution using the propagation of error formula s_g² = Σ (∂f/∂i)² s_i² where i is the contributor to error. The 95% confidence range is calculated from the equation: (concentration) ± t_{CL90} x s_g. Sampling error is not

Certified by:

Kyle Larson, MSc (Biology)
Deputy Director
6073 US93N, Olney MT 59927
406-881-2019 rdb@stlwlabs.com

hexythiazox	0.00 ppm	<10ppb
kresoxym-methyl	0.00 ppm	<10ppb
malathion	0.00 ppm	<10ppb
metalaxyl	0.00 ppm	<10ppb
methiocarb	0.00 ppm	<10ppb
methomyl	0.00 ppm	<10ppb
oxamyl	0.00 ppm	<10ppb
permethrins	0.00 ppm	<10ppb
phosmet	0.00 ppm	<10ppb
piperonyl butoxide	0.00 ppm	<10ppb
prallethrin	0.00 ppm	<10ppb
propiconazole	0.00 ppm	<10ppb
pyridaben	0.00 ppm	<10ppb
spiroxamine	0.00 ppm	<10ppb
tebuconazole	0.00 ppm	<10ppb
thiacloprid	0.00 ppm	<10ppb
thiamethoxam	0.00 ppm	<10ppb



total cannabinoids		CBD	THC
		total 84.4%	0.0%
86.4%	decarb total	84.23%	0%
24643			

This Product Has Been Tested and Complies with 7USC1639o(1) Definition of Hemp



Stillwater Laboratories

https://portal.a2la.org/scopepdf/4961-01.pdf

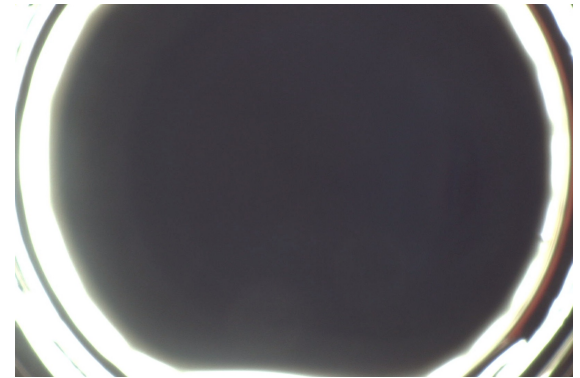
Sample Handling

test ID sample date 9/15/20 2:05 PM
 order 8356 labID OJK39 weight
 source

Methods

method	equipment
weights MSP-7.3.1.3	AUX120.1
potency MSP-7.5.1.5	LC-2030
terpenes MSP-7.5.1.7	QP2020/HS20
pesticides MSP-7.5.1.8	LC-8060
mycotoxins MSP-7.5.1.8	LC-8060
microbial MSP-7.5.1.1	AriaMx RTPCR
solvents MSP-7.5.1.6	QP2020/HS20
metals MSP-7.5.1.11	ICPMS2030

concentrate



Potency

	%	estimated error
tetrahydrocannabinolic acid (THCa)	0%	± 0.02 %
Δ ⁹ -tetrahydrocannabinol (Δ ⁹ THC)	0%	± 0.02 %
Δ ⁸ -tetrahydrocannabinol (Δ ⁸ THC)	0%	± 0.02 %
tetrahydrocannabivarin (THCv)	0%	± 0.02 %
cannabidiolic acid (CBDa)	1.22%	± 0.09 %
cannabidiol (CBD)	83.16%	± 0.74 %
cannabidivarin (CBDv)	.51%	± 0.06 %
cannabigerolic acid (CBGa)	0%	± 0.02 %
cannabigerol (CBG)	1.51%	± 0.10 %
cannabinol (CBN)	0%	± 0.02 %
cannabichromene (CBC)	0%	± 0.02 %

Terpenes

terpenes not tested / not required

Solvents

MT limit	OJK39	LOQ
propane 5,000	PASS	<10ppm
butanes 5,000	PASS	<10ppm
pentanes 5,000	PASS	<10ppm
hexanes 290	PASS	<10ppm
cyclohexane 3,880	PASS	<10ppm
heptanes 5,000	PASS	<10ppm
methanol 3,000	PASS	<10ppm
isopropanol 5,000	PASS	<10ppm
acetone 5,000	PASS	<10ppm
ethyl acetate 5,000	PASS	<10ppm
benzene 2	PASS	<0.2ppm
toluene 890	PASS	<10ppm
xylenes 2,170	PASS	<10ppm
chloroform 2	PASS	<0.2ppm
dichloromethane 600	PASS	<10ppm
acetonitrile NA	N/A	<10ppm
ethanol NA	N/A	<10ppm
tetrahydrofuran NA	N/A	<10ppm

Pesticides (MT)

MT limit	OJK39	LOQ
abamectin 2.50 ppm	PASS	<10ppb
acequinocyl 10.00 ppm	PASS	<10ppb
bifenazate 1.00 ppm	PASS	<10ppb
bifenthrin 1.00 ppm	PASS	<10ppb
chlormequat cl. 5.00 ppm	PASS	<10ppb
cyfluthrin 5.00 ppm	PASS	<80ppb
diaminozide 5.00 ppm	PASS	<10ppb
etoxazole 1.00 ppm	PASS	<10ppb
fenoxycarb 1.00 ppm	PASS	<10ppb
imazalil 1.00 ppm	PASS	<10ppb
imidacloprid 2.00 ppm	PASS	<10ppb
myclobutanil 0.60 ppm	PASS	<10ppb
paclobutrazol 2.00 ppm	PASS	<10ppb
pyrethrins 5.00 ppm	PASS	<10ppb
spinosad 1.00 ppm	PASS	<10ppb
spiromesifen 1.00 ppm	PASS	<10ppb
spirotetramat 1.00 ppm	PASS	<10ppb
trifloxystrobin 1.00 ppm	PASS	<10ppb

Pesticides (other)

OJK39	LOQ
acephate 0.00 ppm	<10ppb
acetamiprid 0.00 ppm	<10ppb
aldicarb 0.00 ppm	<10ppb
azoxystrobin 0.00 ppm	<10ppb
boscalid 0.00 ppm	<10ppb
carbaryl 0.00 ppm	<10ppb
carbofuran 0.00 ppm	<10ppb
chlorantraniliprole 0.00 ppm	<10ppb
chlorpyrifos 0.00 ppm	<10ppb
clofentezine 0.00 ppm	<10ppb
cypermethrin 0.00 ppm	<10ppb
diazinon 0.00 ppm	<10ppb
dichlorvos 0.00 ppm	<10ppb
dimethoate 0.00 ppm	<10ppb
etofenprox 0.00 ppm	<10ppb
fenpyroximate 0.00 ppm	<10ppb
fipronil 0.00 ppm	<10ppb
flonicamid 0.00 ppm	<10ppb
fludioxonil 0.00 ppm	<10ppb
hexythiazox 0.00 ppm	<10ppb
kresoxym-methyl 0.00 ppm	<10ppb
malathion 0.00 ppm	<10ppb
metalaxyl 0.00 ppm	<10ppb
methiocarb 0.00 ppm	<10ppb
methomyl 0.00 ppm	<10ppb
oxamyl 0.00 ppm	<10ppb
permethrins 0.00 ppm	<10ppb
phosmet 0.00 ppm	<10ppb
piperonyl butoxide 0.00 ppm	<10ppb
prallethrin 0.00 ppm	<10ppb
propiconazole 0.00 ppm	<10ppb
pyridaben 0.00 ppm	<10ppb
spiroxamine 0.00 ppm	<10ppb
tebuconazole 0.00 ppm	<10ppb
thiacloprid 0.00 ppm	<10ppb
thiamethoxam 0.00 ppm	<10ppb

Toxic Metals

MT limit	OJK39	LOQ
arsenic 2 ppm	PASS	<10ppb
cadmium 4.1 ppm	PASS	<10ppb
lead 1.2 ppm	PASS	<10ppb
mercury 0.4 ppm	PASS	<10ppb

Microbial

MT limit	OJK39	LOQ
Aflatoxin B1,B2,G1,G2 20 ppb	PASS	<20 ppb
Ochratoxin A 20 ppb	PASS	<20 ppb

microbial not tested

• All testing was completed onsite at 6073 US93N, Olney MT • Potency (cannabinoid concentration) is calculated from the equation: [cannabinoid] = [cannabinoid]_{HPLC} x volume_{dilution} / m_{dry}. Terpene concentration is calculated from the equation: [terpene] = (terpene mass)_{GCMS} / m_{dry}. •• Decarboxyted cannabinoid concentration is calculated from the equation XXX_{total} = 0.877 x XXX_a + XXX ••• Standards are used to calibrate the resulting data and estimate error using a standard estimate of error method; this is combined with error from weighing and dilution using the propagation of error formula s_g² = Σ(∂f/∂i)²s_i² where i is the contributor to error. The 95% confidence range is calculated from the equation: (concentration) ± t_{CL90} x s_g. Sampling error is not

Certified by:

Kyle Larson, MSc (Biology)
 Deputy Director
 6073 US93N, Olney MT 59927
 406-881-2019 rdb@stwlabs.com