

# CERTIFICATE OF ANALYSIS

**PRODUCT NAME:** Sports Cream  
**PRODUCT STRENGTH:** 400 mg  
**LOT NUMBER:** 0079A  
**BEST BY DATE:** 10/02/2021  
**HEMP EXTRACT LOT NUMBER:** [CONO19-124](#)

**\*Click on the links to view third-party reports\***

*Physical Attributes*

Test	Method	Specification	Results
Color	SOP-100	white to off white	PASS
Odor	SOP-100	Blend of Menthol, Camphor, Eucalyptus, Lavender, Rosemary, Wintergreen & Marjoram.	PASS
Appearance	SOP-100	Creamy smooth cream consistently with medium viscosity	PASS
Primary Package Eval.	SOP-132	Container clean and free of filth. Lid intact.	PASS
Secondary Package Eval.	SOP-132	Labeling Compliance Checked, Cartons sturdy and clean. Sufficient cushion material exists. Box taped and secure.	PASS

*Review of Third-Party Analysis*

Panel	Method	Specification	Results	Pass/Fail
<b>Potency - Total CBD</b>	SOP-111	380-500 mg CBD LOQ**: 10 PPM† (0.001%)	<a href="#">477.2 mg</a>	PASS
<b>Potency - D9-THC</b>	SOP-111	None Detected LOQ: 10 PPM (0.001%)	<a href="#">ND</a>	PASS
<b>Compliant Pesticide Panel</b>	SOP-111	Action Limits for Oregon Pesticides use in Cannabis	<a href="#">ND</a>	PASS
<b>Microbial - Stec E.Coli</b>	SOP-111	Complies with USP 61/62	<a href="#">Below LOD</a>	PASS
<b>Microbial - Salmonella</b>	SOP-111	Complies with USP 61/62	<a href="#">Below LOD</a>	PASS
<b>Microbial - Mold</b>	SOP-111	Complies with USP 61/62	<a href="#">Below LOD</a>	PASS
<b>CA Compliant Heavy Metal Panel</b>	SOP-111	Arsenic (As): ≤1.5 PPM Cadmium (Cd): ≤0.5 PPM Mercury (Hg): ≤1.0 PPM Lead (Pb): ≤0.5 PPM	<a href="#">Below LOQ</a>	PASS

\* Level of Quantitation, † Parts Per Million

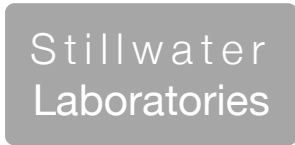
Quality Certified by: *Darcie Moran* 04.17.2020  
 Darcie Moran Date  
 Manager of Quality Assurance

# Sports Cream 0079A

# Certificate of Analysis



total cannabinoids	$\Delta^9$ -THC	THCa	total THC
<b>477.2 mg</b>	0 mg	0 mg	0 mg
per	CBD	CBDa	total CBD
<b>4oz</b>	447.3 mg	25.3 mg	447.3 mg



<https://portal.a2la.org/scopepdf/4961-01.pdf>

## Sample Handling

test ID	sample wt	113.6 g
type	order	<b>6899</b>
lab ID	sample date	3/24/2020
unit	unit weight	<b>113.6 g</b>

## Methods

method	equipment
weights	MSP-7.3.1.3 AUX120.1
potency	MSP-7.5.1.5 LC-2030
terpenes	MSP-7.5.1.7 QP2020/HS20
pesticides	MSP-7.5.1.8 LC-8060
mycotoxins	MSP-7.5.1.8 LC-8060
microbial	MSP-7.5.1.9 Hardy Diag
solvents	MSP-7.5.1.6 QP2020/HS20
metals	MSP-7.5.1.1 ICPMS2030

## topical



Potency	per	4oz	estimated error	Terpenes	%	estimated error	%	estimated error	%	estimated error		
tetrahydrocannabinolic acid (THCa)	0%	0 mg	± 1.87 mg	$\beta$ -myrcene	0.000%	± 0.0016%	camphene	0.000%	± 0.0016%	guaiaol	0.000%	± 0.0016%
$\Delta^9$ -tetrahydrocannabinol ( $\Delta^9$ THC)	0%	0 mg	± 1.87 mg	$\beta$ -caryophyllene	0.000%	± 0.0016%	$\Delta^3$ -carene	0.000%	± 0.0016%	$\beta$ -bisabolol	0.000%	± 0.0016%
$\Delta^8$ -tetrahydrocannabinol ( $\Delta^8$ THC)	0%	0 mg	± 1.87 mg	alpha-pinene	0.000%	± 0.0016%	a-terpinene	0.000%	± 0.0016%	eucalyptol	0.000%	± 0.0016%
tetrahydrocannabivarin (THCv)	0%	0 mg	± 1.87 mg	$\beta$ -pinene	0.000%	± 0.0016%	para-cymene	0.000%	± 0.0016%			
cannabidiolic acid (CBDa)	0.02%	25.3 mg	± 2.45 mg	D-limonene	0.000%	± 0.0016%	g-terpinene	0.000%	± 0.0016%			
cannabidiol (CBD)	39%	447.3 mg	± 6.90 mg	linalool	0.000%	± 0.0016%	(-)-isopulegol	0.000%	± 0.0016%			total
cannabidivarin (CBDv)	0%	4.6 mg	± 1.99 mg	ocimene	0.000%	± 0.0033%	geraniol	0.000%	± 0.0016%			terpenes
cannabigerolic acid (CBGa)	0%	0 mg	± 1.87 mg	terpinolene	0.000%	± 0.0016%	cis-nerolidol	0.000%	± 0.0016%			<b>0.00%</b>
cannabigerol (CBG)	0%	0 mg	± 1.87 mg	alpha-humulene	0.000%	± 0.0016%	trans-nerolidol	0.000%	± 0.0016%			
cannabinol (CBN)	0%	0 mg	± 1.87 mg									
cannabichromene (CBC)	0%	0 mg	± 1.87 mg									

Solvents	MT limit	0CU52	LOQ	Pesticides (MT)	MT limit	0CU52	LOQ	Pesticides (other)	0CU52	LOQ
propane	5,000	0 ppm	<10ppm	abamectin		0.00 ppm	<10ppb	acephate	0.00 ppm	<10ppb
butanes	5,000	0 ppm	<10ppm	acequinocyl		0.00 ppm	<10ppb	acetamiprid	0.00 ppm	<10ppb
pentanes	5,000	0 ppm	<10ppm	bifenazate		0.00 ppm	<10ppb	aldicarb	0.00 ppm	<10ppb
hexanes	290	0 ppm	<10ppm	bifenthrin		0.00 ppm	<10ppb	azoxystrobin	0.00 ppm	<10ppb
cyclohexane	3,880	0 ppm	<10ppm	chlormequat cl.		0.00 ppm	<10ppb	boscalid	0.00 ppm	<10ppb
heptanes	5,000	0 ppm	<10ppm	cyfluthrin		0.00 ppm	<80ppb	carbaryl	0.00 ppm	<10ppb
methanol	3,000	0 ppm	<10ppm	diaminozide		0.00 ppm	<10ppb	carbofuran	0.00 ppm	<10ppb
isopropanol	5,000	0 ppm	<10ppm	etoxazole		0.00 ppm	<10ppb	chloantraniliprole	0.00 ppm	<10ppb
acetone	5,000	0 ppm	<10ppm	fenoxycarb		0.00 ppm	<10ppb	chlorpyrifos	0.00 ppm	<10ppb
ethyl acetate	5,000	0 ppm	<10ppm	imazalil		0.00 ppm	<10ppb	clofentazine	0.00 ppm	<10ppb
benzene	2	0 ppm	<0.2ppm	imidacloprid		0.00 ppm	<10ppb	cypermethrin	0.00 ppm	<10ppb
toluene	890	0 ppm	<10ppm	myclobutanil		0.00 ppm	<10ppb	diazinon	0.00 ppm	<10ppb
xylenes	2,170	0 ppm	<10ppm	paclobutrazol		0.00 ppm	<10ppb	dichlorvos	0.00 ppm	<10ppb
chloroform	2	0 ppm	<0.2ppm	pyrethrins		0.00 ppm	<10ppb	dimethoate	0.00 ppm	<10ppb
dichloromethane	600	0 ppm	<10ppm	spinosad		0.00 ppm	<10ppb	etofenprox	0.00 ppm	<10ppb
				spiromesifen		0.00 ppm	<10ppb	fenpyroximate	0.00 ppm	<10ppb
				spirotetramat		0.00 ppm	<10ppb	fipronil	0.00 ppm	<10ppb
				trifloxystrobin		0.00 ppm	<10ppb	flonicamid	0.00 ppm	<10ppb
								fludioxonil	0.00 ppm	<10ppb
								hexythiazox	0.00 ppm	<10ppb
								kresoxym-methyl	0.00 ppm	<10ppb
								malathion	0.00 ppm	<10ppb
								metalaxyl	0.00 ppm	<10ppb
								methiocarb	0.00 ppm	<10ppb
								methomyl	0.00 ppm	<10ppb
								oxamyl	0.00 ppm	<10ppb
								permethrins	0.00 ppm	<10ppb
								phosmet	0.00 ppm	<10ppb
								piperonyl butoxide	0.00 ppm	<10ppb
								prallethrin	0.00 ppm	<10ppb
								propiconazole	0.00 ppm	<10ppb
								pyridaben	0.00 ppm	<10ppb
								spiroxamine	0.00 ppm	<10ppb
								tebuconazole	0.00 ppm	<10ppb
								thiacloprid	0.00 ppm	<10ppb
								thiamethoxam	0.00 ppm	<10ppb

## Toxic Metals

MT limit	0CU52	LOQ
arsenic	2 ppm	0.0 ppm
cadmium	4.1 ppm	0.0 ppm
lead	1.2 ppm	0.0 ppm
mercury	0.4 ppm	0.0 ppm

## Comments

• All testing was completed onsite at 6073 US93N, Olney MT • Potency (cannabinoid concentration) is calculated from the equation: [cannabinoid] = [cannabinoid]<sub>HPLC</sub> x volume<sub>dilution</sub>/m<sub>dry</sub>. Terpene concentration is calculated from the equation: [terpene] = (terpene mass)<sub>GCMS</sub> / m<sub>dry</sub>. ••• Decarboxylated cannabinoid concentration is calculated from the equation XXX<sub>total</sub> = 0.877 x XXXa + XXX ••• Standards are used to calibrate the resulting data and estimate error using a standard estimate of error method; this is combined with error from weighing and dilution using the propagation of error formula s<sub>g</sub><sup>2</sup> =  $\sum (\partial f/\partial i)^2 s_i^2$  where i is the contributor to error. The 95% confidence range is calculated from the equation: (concentration)  $\pm$  t<sub>CL90</sub> x s<sub>g</sub>. Sampling error is not

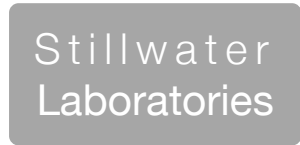
Certified by:

Paula Kosted, PhD (Biochem)  
Deputy Director  
6073 US93N, Olney MT 59927  
406-881-2019 rdb@stwlabs.com



total cannabinoids **85.3%**  
 CBD decarb total 84.31%  
 Δ9-THC ND

**This Product Has Been Tested and Complies with 7USC1639o(1) Definition of Hemp**

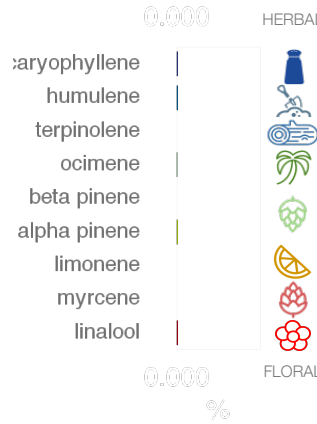


https://portal.a2la.org/scopepdf/4961-01.pdf

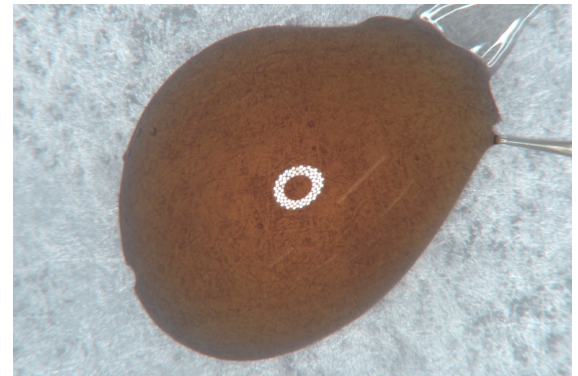
Sample Handling

test ID sample date 3/9/20 11:06 AM  
 order 6767 labID OCG24 weight  
 source

Methods	method	equipment
weights	MSP-7.3.1.3	AUX120.1
potency	MSP-7.5.1.5	LC-2030
terpenes	MSP-7.5.1.7	QP2020/HS20
pesticides	MSP-7.5.1.8	LC-8060
mycotoxins	MSP-7.5.1.8	LC-8060
microbial	MSP-7.5.1.9	Hardy Diag
solvents	MSP-7.5.1.6	QP2020/HS20
metals	MSP-7.5.1.10	ICPMS2030



concentrate



Potency	%	estimated error	Terpenes	%	estimated error	%	estimated error	%	estimated error	
tetrahydrocannabinolic acid (THCa)	ND	± 0.02 %	β-myrcene	0.000%	± 0.0016%	camphene	0.000%	± 0.0016%	guaiol	0.001% ± 0.0017%
Δ <sup>9</sup> -tetrahydrocannabinol (Δ <sup>9</sup> THC)	ND	± 0.02 %	β-caryophyllene	0.005%	± 0.0018%	Δ3-carene	0.000%	± 0.0016%	β-bisabolol	0.000% ± 0.0016%
Δ <sup>8</sup> -tetrahydrocannabinol (Δ <sup>8</sup> THC)	ND	± 0.02 %	alpha-pinene	0.002%	± 0.0017%	a-terpinene	0.000%	± 0.0016%	eucalyptol	0.003% ± 0.0017%
tetrahydrocannabivarin (THCv)	ND	± 0.02 %	β-pinene	0.000%	± 0.0016%	para-cymene	0.010%	± 0.0019%		
cannabidiolic acid (CBDa)	ND	± 0.02 %	D-limonene	0.000%	± 0.0016%	g-terpinene	0.008%	± 0.0019%		
cannabidiol (CBD)	84.31%	± 0.75 %	linalool	0.006%	± 0.0018%	(-)-isopulegol	0.000%	± 0.0016%	total terpenes	0.06%
cannabivarin (CBDv)	.92%	± 0.08 %	ocimene	0.000%	± 0.0033%	geraniol	0.000%	± 0.0016%		
cannabigerolic acid (CBGa)	ND	± 0.02 %	terpinolene	0.000%	± 0.0016%	cis-nerolidol	0.000%	± 0.0016%		
cannabigerol (CBG)	.04%	± 0.02 %	alpha-humulene	0.006%	± 0.0018%	trans-nerolidol	0.000%	± 0.0016%		
cannabinol (CBN)	ND	± 0.02 %								
cannabichromene (CBC)	ND	± 0.02 %								

Solvents	MT limit	OCG24	LOQ	Pesticides (MT)	MT limit	OCG24	LOQ	Pesticides (other)	OCG24	LOQ
propane	5,000	0 ppm	<10ppm	abamectin	2.50 ppm	0.00 ppm	<10ppb	acephate	0.00 ppm	<10ppb
butanes	5,000	0 ppm	<10ppm	acequinocyl	10.00 ppm	0.00 ppm	<10ppb	acetamiprid	0.00 ppm	<10ppb
pentanes	5,000	0 ppm	<10ppm	bifenazate	1.00 ppm	0.00 ppm	<10ppb	aldicarb	0.00 ppm	<10ppb
hexanes	290	0 ppm	<10ppm	bifenthrin	1.00 ppm	0.00 ppm	<10ppb	azoxystrobin	0.00 ppm	<10ppb
cyclohexane	3,880	0 ppm	<10ppm	chlormequat cl.	5.00 ppm	0.00 ppm	<10ppb	boscalid	0.00 ppm	<10ppb
heptanes	5,000	0 ppm	<10ppm	cyfluthrin	5.00 ppm	0.00 ppm	<80ppb	carbaryl	0.00 ppm	<10ppb
methanol	3,000	0 ppm	<10ppm	diaminozide	5.00 ppm	0.00 ppm	<10ppb	carbofuran	0.00 ppm	<10ppb
isopropanol	5,000	0 ppm	<10ppm	etoxazole	1.00 ppm	0.00 ppm	<10ppb	chloantraniliprole	0.00 ppm	<10ppb
acetone	5,000	0 ppm	<10ppm	fenoxycarb	1.00 ppm	0.00 ppm	<10ppb	chlorpyrifos	0.00 ppm	<10ppb
ethyl acetate	5,000	0 ppm	<10ppm	imazalil	1.00 ppm	0.00 ppm	<10ppb	clofentezine	0.00 ppm	<10ppb
benzene	2	0 ppm	<0.2ppm	imidacloprid	2.00 ppm	0.00 ppm	<10ppb	cypermethrin	0.00 ppm	<10ppb
toluene	890	0 ppm	<10ppm	myclobutanil	0.60 ppm	0.00 ppm	<10ppb	diazinon	0.00 ppm	<10ppb
xylenes	2,170	0 ppm	<10ppm	paclobutrazol	2.00 ppm	0.03 ppm	<10ppb	dichlorvos	0.00 ppm	<10ppb
chloroform	2	0 ppm	<0.2ppm	pyrethrins	5.00 ppm	0.00 ppm	<10ppb	dimethoate	0.00 ppm	<10ppb
dichloromethane	600	0 ppm	<10ppm	spinosad	1.00 ppm	0.00 ppm	<10ppb	etofenprox	0.00 ppm	<10ppb
				spiromesifen	1.00 ppm	0.00 ppm	<10ppb	fenpyroximate	0.00 ppm	<10ppb
				spirotetramat	1.00 ppm	0.00 ppm	<10ppb	fipronil	0.00 ppm	<10ppb
				trifloxystrobin	1.00 ppm	0.00 ppm	<10ppb	flonicamid	0.00 ppm	<10ppb

Toxic Metals	MT limit	OCG24	LOQ
--------------	----------	-------	-----

metals not tested / not required

Comments

Microbial	MT limit	OCG24	LOQ
<i>E. coli</i>	10 CFU	0 CFU	<10 CFU/g
Salmonella sp.	10 CFU	0 CFU	<10 CFU/g
molds	10000 CFU	0 CFU	<10k CFU/g
Aflatoxin B1,B2,G1,G2	20 ppb	0 ppb	<20 ppb
Ochratoxin A	20 ppb	0 ppb	<20 ppb

Certified by:

Kyle Larson, MSc (Biology)  
 Deputy Director  
 6073 US93N, Olney MT 59927  
 406-881-2019 rdb@stwlabs.com

Printed 3/13/2020 10:23 AM

• All testing was completed onsite at 6073 US93N, Olney MT •• Potency (cannabinoid concentration) is calculated from the equation: [cannabinoid] = [cannabinoid]<sub>HPLC</sub> x volume<sub>dilution</sub> / m<sub>dry</sub>. Terpene concentration is calculated from the equation: [terpene] = (terpene mass)<sub>GCMS</sub> / m<sub>dry</sub>. ••• Decarboxyted cannabinoid concentration is calculated from the equation XXX<sub>total</sub> = 0.877 x XXX<sub>a</sub> + XXX ••• Standards are used to calibrate the resulting data and estimate error using a standard estimate of error method; this is combined with error from weighing and dilution using the propagation of error formula S<sub>y</sub><sup>2</sup> = Σ (∂f/∂i)<sup>2</sup> S<sub>i</sub><sup>2</sup> where i is the contributor to error. The 95% confidence range is calculated from the equation: (concentration) ± t<sub>CL90</sub> X S<sub>y</sub>. Sampling error is not