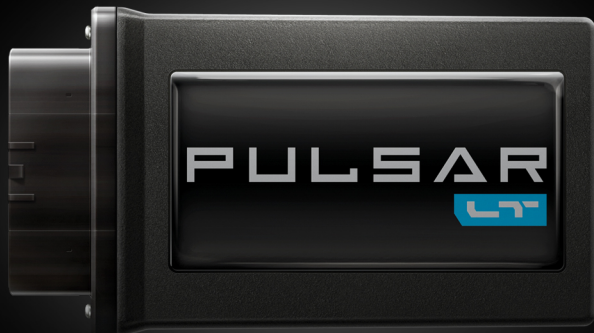


PULSAR

INLINE CONTROL MODULE



FEATURE AND PROGRAMMING MENU

QUICK REFERENCE

GM 1500 3.0L DIESEL



TECHNICAL SUPPORT

For operating instructions and troubleshooting, please refer to the User Guide. For additional questions contact:

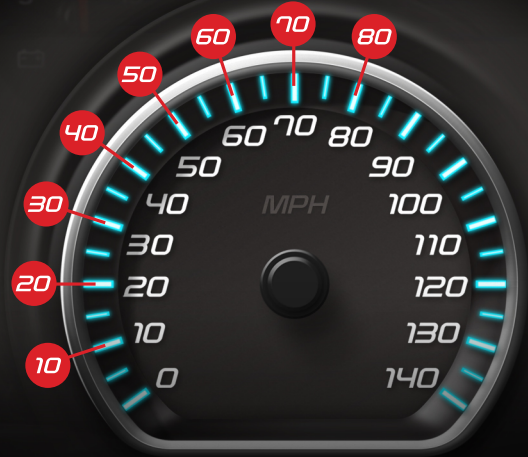
MON-FRI 8:00 AM - 5:00 PM (MST)
1-888-360-3343

PN# D10025700

ACCESS

PROGRAMMING MENU (repeat for each feature)

1. Engine Off
2. a. Using a push button - Foot off brake, Press and hold Start button 5 sec.
b. Using a key - turn key to the RUN position
3. Hold Cancel Cruise button 5 sec.
4. Navigate with +RES/-SET to feature
5. Press Cancel Cruise to select feature



Speed Limiter **10**

1. Select 10 (MPH)
2. Adjust with +RES/-SET
3. Press Cancel Cruise to select

TPMS (Tire Pressure Monitor System) **20**

1. Select 20 (MPH)
2. Adjust with +RES/-SET
3. Press Cancel Cruise to select

Tire Size **30**

1. Select 30 (MPH)
2. Select stock whole number then press Cancel Cruise to save
3. Select stock decimal number then Cancel Cruise to save
4. Repeat 2-3 with modified tire size

Axle Ratio **40**

1. Select 40 (MPH)
2. Select stock whole number then press Cancel Cruise to save
3. Select stock decimal number then Cancel Cruise to save
4. Repeat 2-3 with modified axle ratio

Clear DTC's **50**

1. Select 50 (MPH)
2. Press Cancel Cruise to select

Manual Regen **60**

1. Refer to the user manual for information on operating instruction

Trans Relearn **70**

1. Refer to the user manual for information on operating instruction

Auto Start/Stop Disable **80**

1. Select 80 (MPH)
2. Adjust with +RES/-SET
a. 0 = Active
b. 10 = Disabled
3. Press Cancel Cruise to select

* For complete instructions please refer to the user manual