




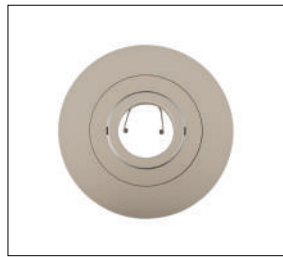
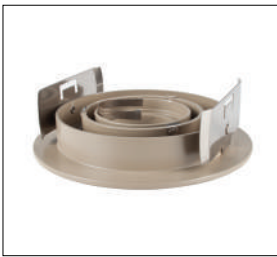




- |  |  |   |
|--|--|---|
|  BLACK      |  NICKEL |  WHITE |
|  MATT WHITE |  TAUPE  |  BROWN |


**Product Name**

- TG1911---C4B-C : 4" Laser Cut Gimbal Trim, MR16 (Black)
- TG1921---C4N-C : 4" Laser Cut Gimbal Trim, MR16 (Nickel)
- TG1931---C4W-C : 4" Laser Cut Gimbal Trim, MR16 (White)
- TG1941---C4WMC : 4" Laser Cut Gimbal Trim, MR16 (Matt White)
- TG1951---C4T-C : 4" Laser Cut Gimbal Trim, MR16 (Taupe)
- TG1961---C4BRC : 4" Laser Cut Gimbal Trim, MR16 (Brown)

**Product Specification**

- Size (inch): 4
- C/F: Clear
- Clip Style: Torsion Rectangular Clips
- Damp Location: Yes

**Advantages**

- Airtight Construction
- Auto-Centering Retainer Clip
- Can Fit MR16 and PAR20 Lamp
- Removable Ring
- Gimbals

**Product Features**

- Easy Installation

**Recommended Bulb**

- MR16
- PAR20

**Compatible Housing**

- |                |                  |
|----------------|------------------|
| Remodel        | New Construction |
| RLNIC1---4--C  | NCIC1----4--C    |
| RNIC1----4--C  | NCNIC1---4--C    |
| RLIC1----4--C  | NCLIC1---4--C    |
| RLNICE1---4--C |                  |

