

# SHADE CHART: COLOR CAMO

## 5 MIN. CUSTOM GRAY CAMOUFLAGE

### SHADE SELECTION

1. Determine your client's natural level range: light (levels 7 and higher), medium (levels 4-6) or dark (levels 1-3).
2. Select a shade in the same range as his natural (pigmented) color.
3. Pick the tone you want to see:

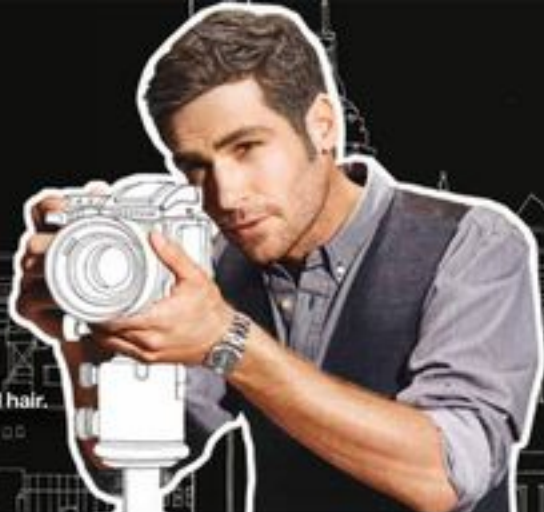
Ash = gray + blue/violet which provides a smoky result

Natural = gray + green/gold which provides a cool gold result

Note: Color Camo does not cover gray hair completely. It is formulated to "camouflage" gray hair and blend it in with natural pigmented hair.

### COLOR CAMO SHADE COLLECTION

Color Camo shades are formulated with customized dyes for natural results.



	BEFORE COLOR CAMO		AFTER COLOR CAMO	
	STARTING RANGE (LEVEL)*		ASH TONE (GRAY + BLUE/VIOLET)	NATURAL TONE (GRAY + GREEN/GOLD)
			5 MIN.	5 MIN.
LIGHT	 light (levels 7 and higher)	 light ash	 light natural	
MEDIUM	 medium (levels 4-6)	 medium ash	 medium natural	
			10 MIN.	10 MIN.
DARK	 dark (levels 1-3)	 dark ash	 dark natural	

\*Color Camo is designed to minimize the contrast between pigmented and non-pigmented (gray) hair. To ensure optimal results, use the correct range (Light, Medium or Dark) for your client's natural level (pigmented hair).

GET INSPIRED. SEE YOUR STYLIST.

**REDKEN**  
5TH AVENUE NYC