

LEVEL	BLUES & GREENS						VIOLETS					COOL BROWNS & BLONDES				MOCHAS		NATURALS		
	.01	.1	.11	.07	.10	.17	.2	.20	.21	.22	.26	.12	.13	.15	.23	.18	.8	.0		.3
10																				
9																				
8																				
7																				
6																				
5																				
4																				
3																				
2																				
1																				

Results are shown on hair swatches that are one level lighter than the shade.

LEVEL	WARM BROWNS & BLONDES			GOLDS		COPPERS						REDS						
	.31	.32	.35	.3	.34	.04	.4	.40	.43	.44	.45	.46	.5	.56	.60	.62	.64	.66
10																		
9																		
8																		
7																		
6																		
5																		
4																		
3																		
2																		
1																		

Results are shown on hair swatches that are one level lighter than the shade.



PREPARETION

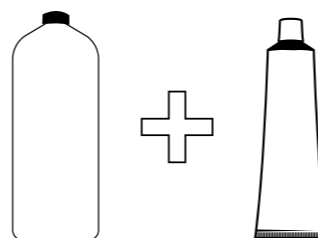
The INOA 2-part system is a 1:1 mixing ratio.

FOR ONE APPLICATION

- Measure 2.1 oz./60g. of INOA ODS² Rich Developer (10-, 20-, or 30-volume) into an INOA measuring cup or INOA doser for accuracy.
- Add 1 tube (2.1 oz./60 g) of INOA ODS² haircolor.
- Mix together until a smooth, creamy texture is obtained.

LEVEL OF LIFT	INOA 10-VOL	INOA 20-VOL	INOA 30-VOL
	1 level	Up to 2 levels	Up to 3 levels
USAGE	Toning refreshing	Coverage of white	More visible color change

DEVELOPER
2.1 OZ. / 60 G



TUBE
2.1 OZ. / 60 G

APPLICATION

Apply to dry, unwashed hair with an INOA brush.
DEVELOPMENT TIME: 35 MINUTES.

TECHNICAL RULES

COVERING WHITE HAIR

- **Up to 70% white hair:** Apply the chosen target shade and process 35 min.
- **Between 70% and 100% white hair:** If the chosen target shade is warm, mix ½ tube of the chosen target shade + ½ tube of the Gold Natural shade at the same level. If the chosen target shade is cool, mix ½ tube of the chosen target shade + ½ tube of the Natural shade at the same level. For mid-lengths and ends, use target shade only. Development time: 35 min.

RINSING

- When development time is complete, add a little warm water to the hair and gently emulsify thoroughly, and rinse until the water runs clear.
- Shampoo twice with INOA-Post Shampoo.

TAKE THROUGH GUIDELINES

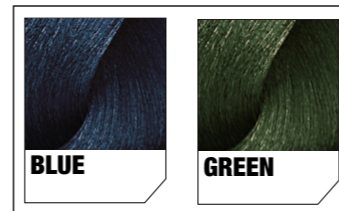
MAXIMUM FADING: INOA (10-vol) DIARICHESSE	LOSS OF DEPTH (2 – 3 LEVELS) + TONE Take through immediately (TTI) Take through last 20 minutes
MODERATE FADING: INOA (10-vol) DIARICHESSE DIALIGHT	LOSS OF DEPTH (1 LEVEL) + TONE Take through last 15 – 20 minutes Take through up to 20 minutes Take through up to 20 minutes
MINIMAL FADING: INOA DIARICHESSE DIALIGHT	SLIGHT LOSS OF TONE Take through last 5 minutes Take through up to 10 minutes Take through up to 10 minutes



INOA MIX

AMMONIA-FREE CONCENTRATED COOL COLOR MIXERS, PERFECT FOR:

- **Neutralization** – Avoid brassiness with exclusive professional color
- **Creativity** – Create special color effects and personalized results



MIXING INSTRUCTIONS

Mix 2.1 oz./60 g of INOA ODS² Rich Developer (10-,20-, or 30-volume) with 0.5 oz./15 g* of INOA Mix shade and 1.6 oz./45 g of INOA target shade (1:1 ratio of INOA ODS² Rich Developer to INOA Mix shade and INOA target shade).

ON PRE LIGHTENED HAIR

- **INTENSE EFFECT:** Mix 2.1 oz./60 g of INOA ODS² 10-volume Rich Developer with 2.1 oz./60 g of INOA Mix shade alone (1:1 ratio).
- **PASTEL EFFECT:** Mix 2.1 oz./60 g of INOA ODS² 10-volume Rich Developer with 0.7 oz./20 g of INOA Mix shade and 1.4 oz./40 g of INOA CLEAR (1:1 ratio).**

*Amount suggested on pigmented hair. INOA Mix is not for covering white.

**Proportions of INOA Mix shade and INOA CLEAR can be varied as long as they are mixed in a 1:1 ratio with INOA ODS² 10-volume Rich Developer.

INOA CLEAR

ONE SHADE, MULTIPLE POSSIBILITIES

- Break the base
- Subdue the intensity of tone
- Create a lighter shade
- Use as a corrective tool
- Use to dilute another shade for colormatching and refreshing on mid-lengths and ends
- Glossing on its own with 10-volume developer
- Create pastel shades with mixers, Carmilane, DM5 or Rubilane shades

