

TOPCHIC & COLORANCE

SHADE CHART



GOLDWELL.

THE NATURALS

N NA NN N@GB N@GK N@BP N@BK N@BS N@KK N@RV/Pk N@RR N@CV

10 **10N** ■●

 extra light blonde
 blond très clair
 rubio extra claro

9 **9N** ■●

 very light blonde
 blond très clair
 rubio muy claro

9NA ■●


 very light natural ash blonde
 blond cendré naturel très clair

9NN ■

 very light blonde / extra
 blond très clair / extra
 rubio muy claro / extra

9N@BP ■

 very light blonde
 eluminated beige pearl

9N@BS ■

 very light blonde
 eluminated beige silver

9N@Pk ■


 very light blonde
 eluminated pink


8 **8N** ■●


 light blonde
 blond clair
 rubio claro


8NA ■


 light natural ash blonde
 blond cendré naturel clair

8NN ■●

 light blonde / extra
 blond clair / extra
 rubio claro / extra

8N@GB ■

 light blonde
 eluminated gold beige

8N@GK ■●

 light blonde
 eluminated gold copper

8N@BS ■●

 light blonde
 eluminated beige silver


8N@KK ■

 light blonde
 eluminated
 intense copper


7 **7N** ■●


 mid blonde
 blond moyen


7NA ■●

 mid natural ash blonde
 blond cendré naturel moyen

7NN ■●

 mid blonde / extra
 blond moyen / extra
 rubio medio / extra

7N@BP ■●

 mid blonde
 eluminated beige pearl

7N@BK ■●

 mid blonde
 eluminated beige copper


7N@RR ■

 mid blonde
 eluminated intense

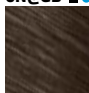
6 **6N** ■●


 dark blonde
 blond foncé
 rubio oscuro

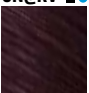
6NA ■

 dark natural ash blonde
 blond cendré naturel foncé
 rubio ceniza nat. oscuro

6NN ■●

 dark blonde / extra
 blond foncé / extra
 rubio oscuro / extra

6N@GB ■●

 dark blonde
 eluminated gold brown

6N@KK ■●

 dark blonde
 eluminated intense copper

6N@RV ■●

 dark blonde
 eluminated ired violet

6NN@CV ■


 dark blonde
 eluminated cool violet

5 **5N** ■●

 dark blonde reflecting bronze
 blond foncé reflecting bronze

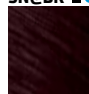
5NA ■●

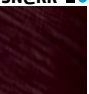
 light natural ash brown
 châtain cendré naturel clair

5NN ■●

 light brown - extra
 châtain clair - extra

5N@BP ■●

 light brown
 eluminated brown pearl

5N@BK ■●

 light brown
 eluminated brown copper

5N@RR ■●

 light brown
 eluminated intense red

4 **4N** ■●

 mid brown
 châtain moyen
 castaño medio

4NA ■●

 mid natural ash brown
 châtain cendré naturel moyen

4NN ■●

 mid brown - extra
 châtain moyen - extra

4N@KK ■●

 mid brown
 eluminated intense copper

3 **3N** ■●

 dark brown
 châtain foncé
 castaño oscuro

3NA ■●

 dark natural ash brown
 châtain cendré naturel
 foncé

3NN ■

 dark brown - extra
 châtain foncé - extra

2 **2N** ■●

 black
 noir
 negro

THE NATURALS

■ TOPCHIC Permanent Hair Color

● COLORANCE Demi-Permanent Hair Color

WARM BLONDES

WARM BROWNS

WARM REDS

WARM BLONDES

WARM BROWNS

WARM REDS

G

GB

**GN/B/
BB**

BG

**BN/KN/
KS**

RB

K

KG

KR/OR

OO MAX

RO MAX

10



10G
champagne blonde
blond champagne
rubio champán



10GB
sahara pastel beige blonde
blond beige sahara pastel



10BB
reallusion
peachy beige
beige rosé



10BG
beige gold
beige doré
beige dorado

9



9G
very light gold blonde
blond doré très clair



9GB
sahara blonde extra light beige
blond beige sahara extra-clair



9GN
turmaline
tourmaline

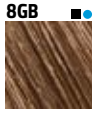


9KG
extra light copper gold
cuivré doré extra-clair
cobre dorado extra claro

8



8G
gold blonde
blond doré



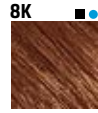
8GB
sahara blonde light beige
blond beige sahara clair



8B
sea sand
sable



8KN
topaz
topaze



8K
light copper blonde
blond cuivré clair



8KG
light copper gold
cuivre doré clair



8OR
light blonde orange-red
roux-orangé blond clair
rubio claro naranja rojo

7



7G
hazel
noisette



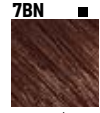
7GB
sahara beige blonde
blond beige sahara



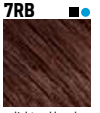
7B
safari



7BG
mid blonde beige gold
blond moyen doré beige



7BN
vesuvian
vésuvienne



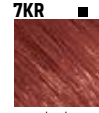
7RB
light red beech
hêtre clair



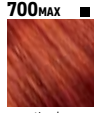
7K
copper blonde
blond cuivré



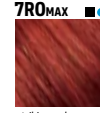
7KG
mid copper gold
cuivre doré moyen



7KR
beryl
béryl



7OoMAX
sensational orange



7ROMAX
striking red copper

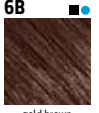
6



6G
tobacco
tabac



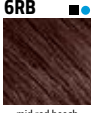
6GB
dark blonde gold brown
blond foncé châtain doré



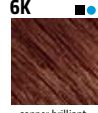
6B
gold brown
châtain doré



6KS
blackened copper silver



6RB
mid red beech
hêtre moyen



6K
copper brilliant
cuivre brillant



6KG
dark copper gold
cuivre doré foncé



6KR
pomegranate
grenade

5



5GB
light brown gold brown
châtain clair brun doré



5B
brazil
brésil



5BG
light brown brown gold
châtain clair doré brun

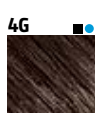


5RB
dark red beech
hêtre foncé



5K
mahogany copper
cuivre acajou

4



4G
chestnut
châtaigne



4B
havana brown
brun havane

3

2

COOL BLONDES

COOL BROWNS

COOL REDS

COOL BLONDES

COOL BROWNS

COOL REDS

BP

BA/BV

A

CA/BM

MB

BS

SB/P

V

VV
MAX

V/VA/
RV MAX

RR
MAX

R

10



10BP
pearly couture extra light blonde
pearly couture blonde extra-clair



10BA
smoky blonde
smoky blond
smoky rubio



10A
pastel ash blonde
blond cendré pastel



10BS
beige silver
beige argenté
beige plata

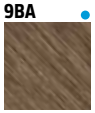


10P
pastel pearl blonde
blond perlé pastel



10V
pastel violet blonde
blond violet pastel
rubio violeta pastel

9



9BA
smoky beige light
smoky beige clair
smoky beige claro



9A
very light ash blonde
blond cendré très clair

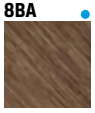


9MB
jade blonde

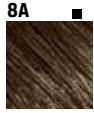
8



8BP
pearly couture light blonde
pearly couture rubio claro
pearly couture blond clair



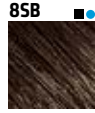
8BA
smoky beige light
smoky beige moyen
smoky beige medio



8A
light ash blonde
blond cendré clair

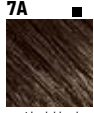


8CA
cool ash



8SB
silver blonde
blond argente

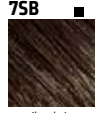
7



7A
mid ash blonde
blond cendré moyen



7MB
light jade brown
châtain jade clair

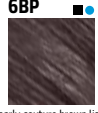


7SB
silver beige
beige argent



7RRMAX
luscious red

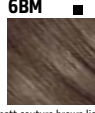
6



6BP
pearly couture brown light
pearly couture brun clair



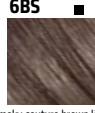
6A
dark ash blonde
blond cendré foncé



6BM
matt couture brown light
matt couture brun clair



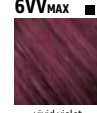
6MB
mid jade brown
châtain jade moyen



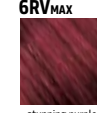
6BS
smoky couture brown light
smoky couture brun clair



6SB
silver brown
brun argent



6VVMAX
vivid violet



6RVMAX
stunning purple



6RRMAX
dramatic red



6R
mahogany brilliant
mahagony brillant
acajou brillant

5



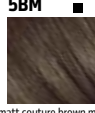
5BP
pearly couture brown mid
pearly couture brun moyen



5BV
reallusion
sparkling brown
brun étincelant



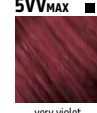
5A
light ash brown
châtain cendré clair



5BM
matt couture brown mid
matt couture brun moyen



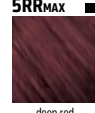
5MB
dark jade brown
châtain jade foncé



5VVMAX
very violet



5VA
fascinating violet ash



5RRMAX
deep red



5R
teak

4



4BP
pearly couture brown dark
pearly couture brun foncé

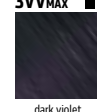


4V
cyclamen
cyclamen



4R
dark mahogany brilliant
acajou foncé brillant

3



3VVMAX
dark violet

2



2A
blue black
noir bleuté

THE SPECIAL LIFT

— THE SPECIAL LIFT —

— THE SPECIAL LIFT —

HiBLONDES CONTROL

Controlling intensity (shown on white hair)



12BN
ultra-blonde beige natural
ultra-blond beige naturel



12B5
ultra-blonde beige silver
ultra-blond beige argent



11G
special gold blonde natural doré
spécial-clair



11PB
special beige blonde silver
spécial-clair



11N
special natural blonde
blond naturel spécial-clair



11SN
silver natural



11P
special blonde pearl
blond perlé spécial-clair



11SV
special silver violet blonde
blond argent violet spécial-clair



11A
special ash blonde
blond cendré spécial-clair



11V
special blonde violet
blond violet spécial-clair

NEUTRALIGHTS

Controlling intensity (shown on white hair)



VIOLET ASH



ASH

TOPCHIC EFFECTS

Intense Highlight Color



K Effects



KR Effects



R Effects



RV Effects



VR Effects

MIX SHADES



KK MIX
copper-mix
cuivré-mix



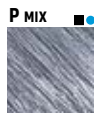
GG MIX
gold-mix
doré-mix



VV MIX
violet-mix
violet-mix



RR MIX
red-mix
rouge-mix



P MIX
pearl-mix
perlé-mix



A MIX
ash-mix
cendré-mix

COLORANCE Pastels



Pastel Lavender



Pastel Rose



Pastel Peach

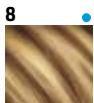


Pastel Mint



Pastel Indigo

COLORANCE Lowlights



Level 8 Natural



Level 7 Natural



Level 6 Natural

COLORANCE Express Toning



CHAMPAGNE



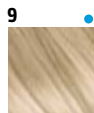
CRÈME



SILVER



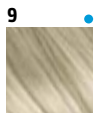
ICY



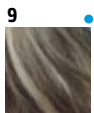
CHAMPAGNE



CRÈME

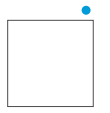


SILVER



ICY

COLORANCE Clear



NEUTRAL

EXPRESS TONING @Eluminated



Beige Mint



Lavender



Rosé

@ELUMENATED REDS



4R@VR
dark mahogany brilliant
eluminated violet red



5B@BK
brazil eluminated
brown copper



6K@KK
copper brilliant
eluminated intense copper



6RR@Pk
dramatic red
eluminated pink



700@GK
sensational orange
eluminated gold copper



7RR@RR
luscious red
eluminated intense red



8SB@Pk
silver blonde
eluminated pink

@ELUMENATED BRUNETTES



4B@RR
Havana Brown
Eluminated Intense Red



5BG@KK
Brown Gold
Eluminated Intense Copper



6N@AV
Dark Blonde
Eluminated Ash Violet



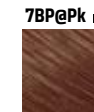
6N@RB
Dark Blonde
Eluminated Red Brown



6BP@VA
Pearly Couture
Eluminated Violet Ash



7SB@BI
Silver Beige
Eluminated Blue



7BP@Pk
pearly couture
eluminated pink

@ELUMENATED METALLICS



6VV@PK
Steel Violet
Eluminated Pink



7AK@PK
Cool Copper
Eluminated Pink



8CA@PB
Cool Bronze
Eluminated Pearl Beige

■ TOPCHIC Permanent Hair Color

● COLORANCE Demi-Permanent Hair Color

TOPCHIC PERMANENT COLOR

COLOR SERIES 2-10



Topchic Lotion
3%, 10 vol.
6%, 20 vol.
9%, 30 vol.
12%, 40 vol.

Topchic
Permanent
Hair Color

COLORING GREY / WHITE

Percentage of Grey	Topchic Lotion	Add N/NA/NN	Fashion Shade
up to 30 %	40 mL	15 mL	25 mL
30-60%	40 mL	20 mL	20 mL
60-100%	40 mL	25 mL	15 mL

N grey coverage in a natural direction
NA grey coverage in a cool direction
NN resistant grey coverage or more soild coverage on normal hair
@EN pre-mixed fashion grey coverage

SELECTING TOPCHIC LOTION

% Topchic Lotion	Result
3%	darker
6%	same or up to 1 level lighter, optimal coverage, tone on tone
9%	2 levels lighter
12%	3-4* levels lighter

* With the addition of Blonding Cream.

PROCESSING TIME

FIRST TIME COLOR:



WITHOUT OPEN AIR SYSTEM:

Apply zone 2 for 5-10 min
Then apply zone 1 for additional 20-25 min
Total Time: 30 MIN



Shampoo Serum

REGROWTH COLOR:



WITH OPEN AIR SYSTEM:

Apply zone 2 for 5 min
Then apply zone 1 for additional 15 min
Total Time: 20 MIN

BLONDING CREAM

Blonding Cream intensifies the degree of lift by one half to one level and can be added to any Topchic shade (up to a maximum of 50%). Blonding Cream Ash has an added controlling effect.

MIX SHADES

Mix Shades may be added to intensify or add cool, controlling tones to Topchic colors.

THE SPECIAL LIFT



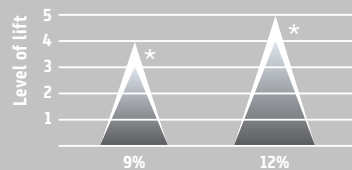
Topchic
Permanent
Hair Color



Topchic Lotion
9%, 30 vol. / 12%, 40 vol.

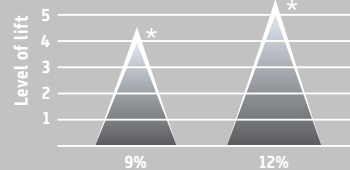
11 SERIES

warm ← → cool
11G, 11PB, 11N, 11SN, 11P, 11SV, 11A, 11V



12 SERIES

warm ← → cool
12BN, 12BS



Refer to the Topchic color card to see the results of various shade levels.
* With Blonding Cream/Blonding Cream Ash.

TC EFFECTS

SELECTING TOPCHIC LOTION

Base Level	Untreated Hair	Color-treated Hair
7	6% (20 vol.)	6-9% (20 vol.-30 vol.)
6	6-9% (20 vol.-30 vol.)	6-9% (20 vol.-30 vol.)
5	6-9% (20 vol.-30 vol.)	6-12% (20 vol.-40 vol.)
4	6-9% (20 vol.-30 vol.)	6-12% (20 vol.-40 vol.)
3	6-12% (20 vol.-40 vol.)	6-12% (20 vol.-40 vol.)
2	6-12% (20 vol.-40 vol.)	not recommended

PROCESSING TIME HIGHLIGHT

FIRST TIME COLOR:



WITHOUT OPEN AIR SYSTEM:

Apply zone 2 for 10-15 min
Then apply zone 1 for additional 30-35 min
Total Time: 45 MIN

WITH OPEN AIR SYSTEM:

Apply zone 2 for 10 min
Then apply zone 1 for additional 20 min
Total Time: 30 MIN

REGROWTH COLOR:



Shampoo Shampoo Serum

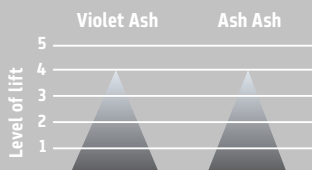
HIGHLIFTING GREY/WHITE

Percentage of Grey	Amount of Topchic Lotion	Amount of 11 Series	Amount of 9N/NA
up to 30%	50 mL	25 mL	-
30-50%	40 mL	10 mL	10 mL
50-70%	40 mL	15 mL	25 mL

over 70% Color grey/white with the color series 2-10

For highlifting grey hair, the use of the 12 series is not recommended.

NEUTRALIGHTS



Violet Ash is recommended on levels 4&5.
Ash Ash is recommended for levels 2-5.

PROCESSING TIME NEUTRALIGHTS

FIRST TIME COLOR:



REGROWTH COLOR:



HAIR: DRY



APPLY WITH BRUSH



WITHOUT OPEN AIR SYSTEM

SHAMPOO

CARE PRODUCT



WITH OPEN AIR SYSTEM

CARE PRODUCT

COLORANCE DEMI-PERMANENT COLOR

COLORANCE

1 HAIR: TOWEL-DRY / HAIR: DRY PASTEL SHADES CREATIVE TECHNIQUES

2 APPLY WITH APPLICATOR / CREATIVE TECHNIQUE PASTEL SHADES

4 25min max.

5 RINSE COLORANCE/ MIX SHADES/ PASTEL SHADES / SHAMPOO MAXREDS/ @ELUMENATED

COLORANCE COVER PLUS

1 HAIR: DRY

2 APPLY WITH BRUSH / LOWLIGHTS

4 30min / 45min max. / NN-SHADES/ @ELUMENATED NATURALS

5 SHAMPOO

COLORANCE EXPRESS TONING

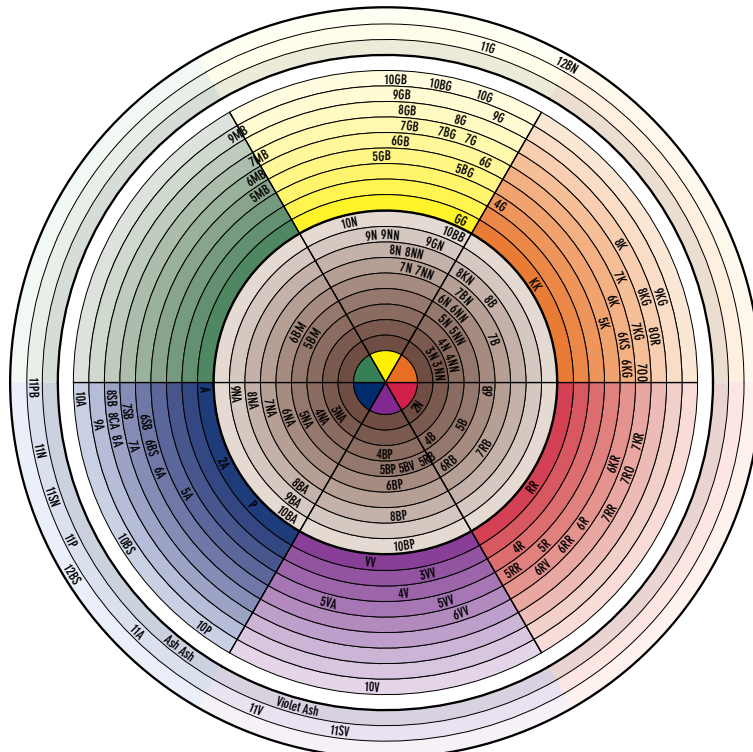
1 HAIR: TOWEL-DRY

2 AT THE BASIN

3 APPLY WITH APPLICATOR

4 5min / WITHOUT HEAT

5 RINSE



DEDICATED TO COLOR PERFECTION

Goldwell supports your individual path to success with a full portfolio of focused, industry-leading educational programs. No matter how long you've been in the industry, we have a program that will meet your needs.

FROM ESSENTIAL PRODUCT INFORMATION TO INSPIRATIONAL CREATIVITY, OUR PROGRAMS ARE THE PERFECT COMPLIMENT TO YOUR OWN KNOWLEDGE TO HELP TAKE YOU FURTHER FASTER.

MASTER **COLORIST**

TAKE YOUR EXPERTISE TO A NEW LEVEL — BECOME A GOLDWELL MASTER COLORIST

- » Master Colorist is a unique color education and certification program, internationally standardized by Goldwell
- » Master Colorist delivers Mastery in Color in terms of confidence, customization, and creativity by staying on trend and meeting the needs of stylists
- » A journey that reaches the highest acknowledgement of a professional lifecycle to successfully master each segment



For information on these and many more programs offered by Goldwell, as well as dates and locations of programs, ask your Goldwell Sales or Education Consultant, or call 1.800.288.9118.

ACADEMY REGISTRATION

Meet the true experts in color-treated hair!

Visit our Academy in New York, NY.

To register, visit KaoSalonAcademy.com or call 866.267.3360

For further information please contact your Goldwell consultant. | goldwell.com



Goldwell is part of Kao Salon Division.

Kao
SALON DIVISION

Enriching the lives of stylists, salon owners and their clients through trusted partnership, salon business growth and our salon exclusive portfolio of advanced services, innovative products and inspiring education.