



All Diamonds are Not Created Equal

Always the Diamond Standard, Two Striper® stays sharp longer and delivers faster, cooler cutting than electroplated brands. Which means less chair time and happier patients.

Made from a select grade of natural diamonds, only Two Striper burs are developed with a proprietary P.B.S.® brazing process that is recognized as the best bonding system in the industry. You can count on Two Striper® for diamonds that stay put, stay sharp and deliver efficient, predictable results.

No matter how you 'cut' it, Two Striper is the #1 choice among dentists¹ because it's better value. Every prep. Every time.

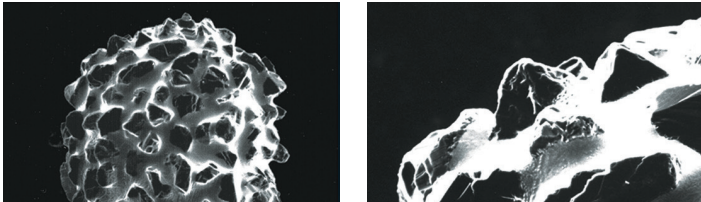
Don't be fooled by 'bargain' burs!

The P.B.S.® Braze Difference is a bonding system that maximizes the exposure of diamond-cutting surfaces. Crystals, placed evenly and precisely in a uniform matrix, are fused permanently to a surgical-grade stainless-steel shank and they are guaranteed not to fall out.

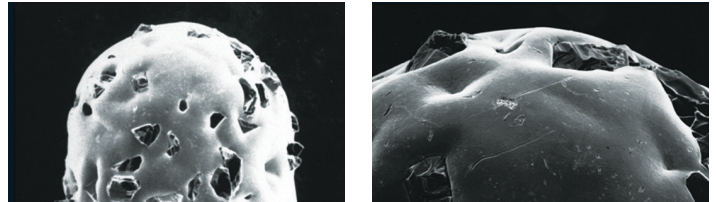
Electroplated diamonds cut less consistently than Two Striper® diamonds² and have a shorter product life. That's because electroplated tools are trapped mechanically in inconsistent plating layers that can expose either too much or too little of the particle. Some particles are attached loosely and are prone to premature dislodgement. Other particles are buried completely in the plating layer and are unavailable to cut tooth structure, creating unnecessary heat and friction.

The combination of permanent crystal attachment, precise placement at the top and maximum crystal exposure makes Two Striper® cut faster, cooler and stay sharp longer.

P.B.S.® -Bonded Two Striper

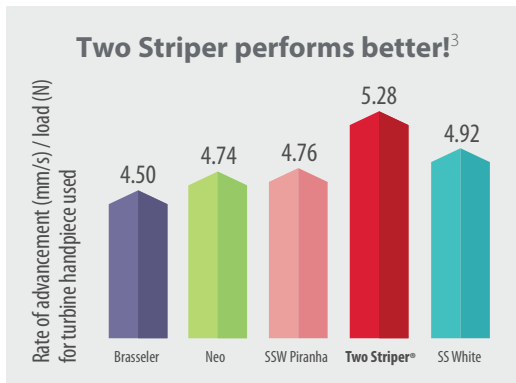


Electroplated Brands

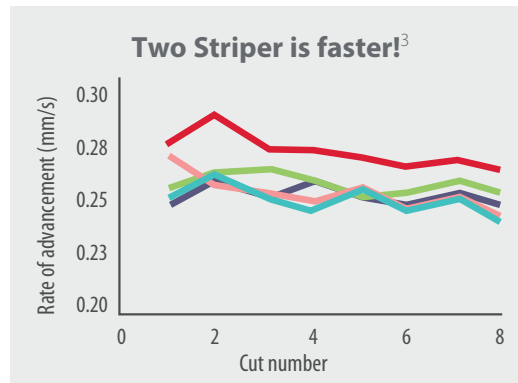


Cuts faster, stays sharp longer!

Independent study proves Two Striper superiority³



"Because advancement rate and load are interrelated (in general, the application of higher loads should lead to more rapid advancement), combining the two parameters provides an overall indicator for the ease of advancement of the rotary cutting instrument inside the substrate. Indeed, a significant difference was found between the Two Striper and the other rotary cutting instrument groups."



Rate of advancement of 5 different groups shown for 8 cuts. Rate showed decreasing trend with increase in cut number when averaged over all groups.

— **Two Striper®**
— SS White — Neo — SSW Piranha — Brasseler

1. SDM Data 2019. 2. Compendium, February 1997. An Evaluation of Operator Preference of Diamond Burs in Coronal Tooth Preparation. 3. J Prosthet Dent 2014;111(1):53-63. PubMed.gov ID# 24246370. Used with permission. 4. An Independent Non-Profit Dental Education and Product Testing Foundation Newsletter, Sept. 2001. 5. An Independent Non-Profit Dental Education and Product Testing Foundation Newsletter, May 2002. / * Premier is a registered trademark of Premier Dental Products Company. / * Two Striper, P.B.S., Compo-Disc, Compo-Strip, Thin-Flex, Clean-A-Diamond, Luminescence and MFS are registered trademarks and ™ Luminescence Plus, Skooter, CrownCut, TGE, MicroPrep, Mini-Squares, TS2000, GCP, SilverStreak, ShortCut and TS2tech are trademarks of the product manufacturer, Abrasive Technology, Inc. / *Brasseler, Neo, SSW Piranha and SS White are not trademarks of Premier.

Better Diamonds... Better Cut, Control & Consistency

The quality of dental diamond instruments starts with the quality of the diamond crystals themselves. And with Two Striper®, the difference is crystal clear. We use natural, virgin diamond crystals - which have more corners and angles than synthetics - for superior abrasion. The individual crystals are selected by exact size and shape to ensure high diamond exposure and a uniform cutting surface. We manufacturer to exacting standards and rigorously test to ensure the highest levels of quality.

Why don't we offer super-coarse grit? Two Striper® optimal coarse grit is preferred over super-coarse grits. Super-coarse particles are bigger and require more plating to hold them. More plating means less diamond coverage overall.



Feeling is Believing

Two Striper® burs just feel right. Carefully crafted to create a more consistent surface for each bur, Two Striper reduces unwanted vibration, skipping and bur chatter. This allows for a smoother surface finish. The result is faster, more efficient cutting, less chair time and happier patients.

Switch to Two Striper®!

Easily convert many diamond brands to Two Striper®. To use this versatile web-based program go to

findmybur.com

or scan the QR code.



Color-Coded Stripes On Shank Indicate Grit

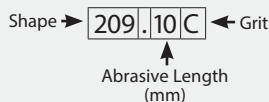
FG Shapes:

-  Coarse (120µ)
-  Fine (60µ)
-  Medium (85µ)
-  Very Fine (45µ)

MFS® Finishing Diamonds:

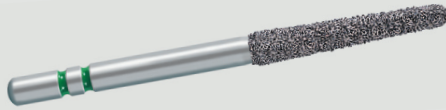
-  MF1 (45µ)
-  MF2 (20µ)
-  MF3 (10µ)

Instrument Coding



Index

TSZtech™	1
TS2000™ Speed-Cut Spiral	2, 4-7, 9, 10
ShortCut™ - Short Shank Diamonds	2
All Ceramic Preps	3
Chamfer Prep	4
Round-End Taper, Flame, Cylinder and KS System	
Guide Pin Chamfer & Assorted Crown Pack	5
Modified Chamfer	5
Curettagge K-Style, Curettagge GCP and Modified Beveled Cylinder	
Shoulder Prep	6
Flat-End Taper and Cylinder	
KR Modified Shoulder Prep	7
KS Cylinder and KR Taper	
Bevel Shoulder Prep	7
Bevel-End Cylinder	
Flame/Feather Edge Prep/Break Contact	8
Flame, Cone, Interproximal Trimmer and Break Contact	
Occlusal & Lingual Reduction	9
Barrel, Egg, Football, Round, Wheel and Occlusal Contour	
Veneer Prep	9
Depth Cut and Depth Marker	
Inlay/Onlay	10
Flat-End Cylinder, KS Cylinder, KR Cylinder and KR Taper	
Crown & Bridge Specialty	10
TGE™ (Tissue Guard End-Cutting), Safe-End, Gross Reduction	
Endo	10
Slow speed	
Operative	11
Pear, Amalgam Removers, Inverted Cone and Diamond Versions of Popular Carbides	
MicroPrep™, MFS® Diamonds, Skooter™	11
Preparation Kits	12
Universal All-Ceramic Prep Kit, Milling Tools	
Bur Blocks, Diamond Wear Factors and Cleaning	13
Clean-A-Diamond® Mini-Squares™, Brite-Shield™	
Laboratory	14
Thin-Flex® Discs, Silverstreak™ Diamond Model Trimming Wheel, HP Lab Diamonds	
Finishing & Polishing	15, 16
Luminescence Plus™ and Luminescence® Compo-Disc®, Compo-Strip®, Ortho Compo-Strip® 200T2	
Diamond Twist SCL™/SCO™ Kits	17
Ceramic/Composite Polishing	
Poli-Pro Disks™	18
Composite Polishing	
Solo Diamond®	19-21, Back Flap
Digital Dentistry Optimization Kit	Back Cover



#1

Top performing diamond to adjust, remove or access all-ceramic restorations!

Recommended for
Zirconia and
Lithium Disilicate

TSZTECH™
The P.B.S.® Brazed Advantage

Cuts Faster, Stays Sharp Longer, Better Value!



Highest rated all-ceramic cutting for today's new generation of tougher ceramic materials.

Those materials include but are not limited to IPS e.max®, BruxZir®, BruxZir® Now, Lava™ Plus, Cercon®, Zirlux® FC, Obsidian™, IPS Empress, Procera® and Lava™ Ultimate.

Recommendations for use:

- Use light touch; let diamond grains do the work
- Run at 160,000 RPMs
- Use copious water-spray
- PFM crown removal requires a carbide bur to cut through metal substrate after the diamond cuts through the ceramic layer

Laboratory Diamonds
Available one per pack:

2015895 **TSZtech™ Diamond Assorted 5-pack**
(260.8Z, 285.5Z, 703.8KRZ, 125Z, 770.8Z)



5-pack Reorder Item Numbers:



260.8Z
2015893
Minor/Major
Diameter
0.3/1.3



285.5Z
2015891
Minor/Major
Diameter
2.2



703.8KRZ
2015894
Minor/Major
Diameter
1.1/1.8



125Z
2015892
Minor/Major
Diameter
1.7



770.8Z
2015890
Minor/Major
Diameter
1.2/1.7

"L" - 1.5mm Longer Shank
Available in 5-packs:



L260.8Z
2015883
Minor/Major
Diameter
0.3/1.3



L125Z
2015882
Minor/Major
Diameter
1.7



L770.8Z
2015880
Minor/Major
Diameter
1.2/1.7



X590.12Z
2012847
Minor/Major
Diameter
1.2



X769.10Z
2012845
Minor/Major
Diameter
0.7/1.8

Intra-oral Adjustments



285.5Z **Football**

Atraumatic Crown and Bridge Removal



770.8Z **Round-End Taper** Section and Remove

Endodontic Access



125Z **Round**

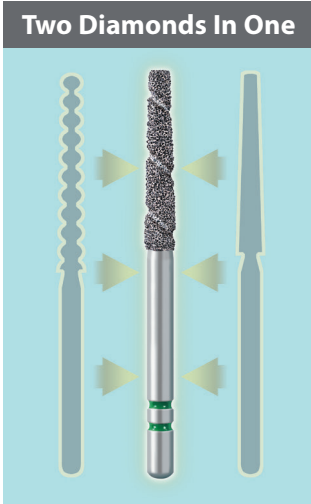


Learn More About Crown Removal
Scan the QR Code or search "TSZtech" on YouTube.



TS2000™

“Combined lab and clinical data showed **highest rated** and **best performing diamonds** were the **TS2000™** and **770.8C Two Striper®** Ultra-Premium Diamonds^{3,4}.”



THE DENTAL ADVISOR
++++½

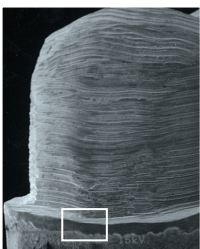
“Fastest Brand”⁵

Less chair-time for you and your patient.

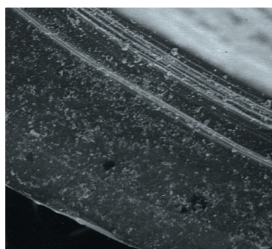
TS2000™ shapes are listed on the following pages.

TS2000™ provide rapid gross reduction and a finished margin without changing burs.

A finished margin is created as shown. You can easily create a chamfer, bevel, or flat shoulder by selecting one of the more than forty shapes available.



Actual Preparation



Close-up occlusal view of finished margin

ShortCut™ Short Shank Diamonds

Available in 5-packs only.



Shorter Shank For Easier Access



Assorted 5-Pack 2015502				
260.8 S	285.5 S	702.8 S	767.8 S	770.8 S
Coarse 2015901	2015900	2015909	2015907	2015905

microprep™	
	MP89 S
Medium 2015968	

TS2000™		
2001.8 S	2004.9 S	2005.8 S
Coarse 2000143	2000141	2000142

Gold-Plated Curettage (GCP™)			
252.SB S	253.SB S	254.SB S	
Medium 2015920	2015921	2015922	

Round-End Taper 767.8 S	770.8 S	780.9 S	782.8 S	Football 285.5 S	Flame 260.8 S	261.8 S
Coarse 2015907	2015905	2015906	2015928	Coarse 2015900	Coarse 2015901	2015925
				Fine 2015923	Fine 2015924	

Flat-End Taper 702.8 S	703.8 S	KR Taper 703.8 KR S	KR Cylinder 521.8 S	Amalgam Removers 1250 S
Coarse 2015909	2015908	Coarse 2015926	Coarse 2015990	Medium 2015912

Bevel-End Cylinder 250.8 S	Flat-End Cylinder 515.7 S	KS1 KS Cylinder (Round Edge) 575.7 S	Interproximal Trimmer 201.3 S
Coarse 2015902	Coarse 2015910	Coarse 2015911	Fine 2015927

Operative 2 S	6 S	169L S	245 S	330 S	556 S	557 S	Skooter™ T1 S
Medium 2015917	2015918	2015919	2015913	2015914	2015916	2015915	Medium T1 S - 2015903
							Very Fine F1 S - 2015904

Prep in your comfort zone

Two Striper®

Ultra-Premium Diamond Burs

Solo Diamond®

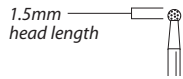
Premium Diamond Burs

See back cover for
Digital Dentistry
Optimization Kit

All Ceramic Preps

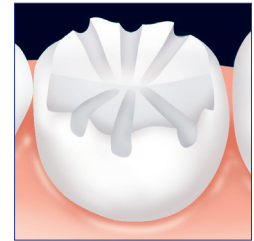
Choose a chamfer or modified shoulder, in a Two Striper® Ultra-Premium or Solo Premium Diamond Bur. Benefit from these carefully selected designs used in a step-by-step technique for predictable results.

Occlusal/Incisal Depth Cuts

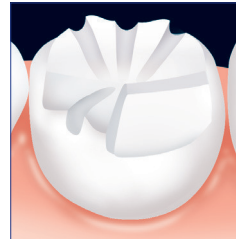


Two Striper® • L120C

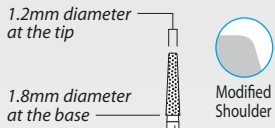
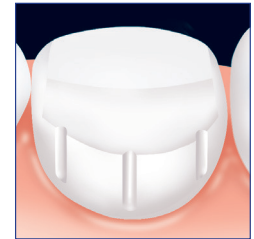
Solo • 801018M



Occlusal/Incisal Reduction



Axial Depth Cuts



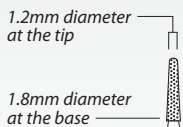
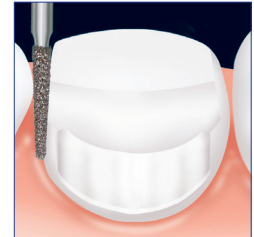
Two Striper® • 703.8C KR

Solo • 847KR018C

Axial Reduction



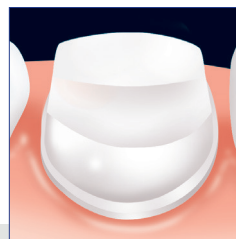
Break Contact



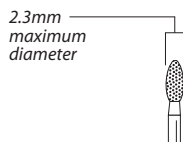
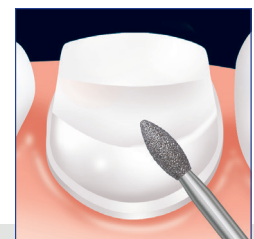
Two Striper® • 770.8C

Solo • 856L018C

Define Margin

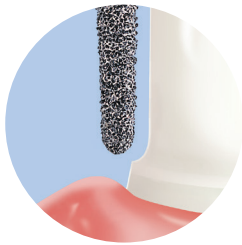


Refine the Preparation



















Two Striper® • 285.5C

















Solo • 368023C









Chamfer Prep



- Round-end tapered or cylindrical diamonds create a chamfered finish line
- Recommended prep design for full coverage crowns and veneers
- Recommended prep design for PFM crowns and some ceramic crowns




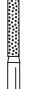




																
Round-End Taper	747.6	767.5	767.7	L767.7	767.8	767.9	770.5	770.7	770.8	L770.8	770.9	770.10	776.4	777.8	780.4	780.7
Coarse	2015058	2015452	2015453	2015652	2015454	2015455	2015456	2015458	2015457	2015650	2015460	2015459	2015461	2015972	2015462	2015463
Medium																2015930
Fine				2015483	2015653	2015484	2015485		2015487	2015651		2015489	2015491			
Minor/Major Diameter	0.8/1.2	1.1/1.6	1.1/1.8	1.1/1.8	1.0/1.8	0.9/1.8	1.3/1.8	1.2/1.8	1.2/1.8	1.3/1.8	1.1/1.8	1.1/1.8	2.1/2.6	0.5/1.0	1.7/2.1	1.4/2.1

																
Round-End Taper	780.8	780.9	781.6	781.8	781.10	782.6	782.8	782.10	783.6	783.8	783.10	784.6	784.8	784.10	785.4	785.7
Coarse	2015464	2015467	2015465	2015478	2015466	2015423	2015424	2015425	2015426	2015427	2015468	2015429	2015430	2015431	2015470	2015469
Fine	2015494	2015497		2015498	2015496	2015433	2015434	2015435			2015438		2015440	2015441		2015499
Very Fine																2015529
Minor/Major Diameter	1.4/2.1	1.4/2.1	0.8/1.1	0.8/1.2	0.8/1.3	1.1/1.4	1.1/1.5	1.1/1.6	1.3/1.6	1.3/1.7	1.3/1.8	1.6/1.9	1.6/2.0	1.6/2.1	2.2/2.6	1.5/2.4






			
Round-End Taper	790.8	799.6.5	799.11
Coarse	2015471	2015473	2015475
Medium		2015480	
Fine	2015501	2015503	2015505
Very Fine			2015535
Minor/Major Diameter	2.0/2.6	0.8/1.5	0.8/1.8






			
Parallel Cylinder Round-End	550.8	573.6	588.10
Coarse	2015311	2015310	2015312
Minor/Major Diameter	1.4	1.2	1.3



		
Round-Edge Cylinder	585.5	587.8
Coarse	2015305	2015304
Minor/Major Diameter	1.3	1.8






								
KS System	574.7	575.7	585.8	586.8	287.4	276.6.2	780.9	866
Coarse	2015953	2015302	2015303	2015307	2015981	2015898	2015467	2015546
Fine	2015954	2015322	2015306		2015982		2015497	
Minor/Major Diameter	1.0	1.2	1.4	1.6	2.3	6.2	1.4/2.1	5.7

TS2000

					
TS2000 Round-End Taper	2003.7	2003.8	2003.9	2003.10	2004.7
Coarse	2000037	2000038	2000039	2000040	2000047
Minor/Major Diameter	0.9/1.4	0.9/1.4	0.9/1.4	0.9/1.4	1.1/1.6

					
TS2000 Round-End Taper	2004.8	2004.9	2004.10	2005.7	2005.8
Coarse	2000048	2000049	2000050	2000057	2000058
Minor/Major Diameter	1.1/1.6	1.1/1.6	1.1/1.6	1.3/1.8	1.3/1.8

		
TS2000 Round-End Taper	2005.9	2005.10
Coarse	2000059	2000060
Minor/Major Diameter	1.3/1.8	1.3/1.8

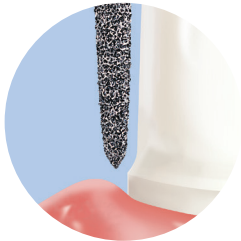
					
TS2000 Flame	2009.7	2009.8	2009.9	2010.8	2011.8
Coarse	2000097	2000098	2000099	2000108	2000118
Minor/Major Diameter	1.4	1.4	1.4	1.6	1.8

S Available as a short shank diamond.
See page 2 for complete list and ordering information.



Deep Chamfer / Curettage / Sub-gingival Preparation

- Provides clearly defined margins for CAD/CAM preps
- Popular for gingival curettage during crown preparation when margins are sub-gingival



Curettage "K"	763.8	763.10	764.8	764.10
Coarse	2015977	2015979	2015978	2015980
Minor/Major Diameter	0.7 / 1.2	0.6 / 1.2	0.8 / 1.4	0.7 / 1.4

Modified Beveled Cylinder	510.6	510.8	511.8	511.10
Coarse	2015973	2015974	2015975	2015976
Minor/Major Diameter	1.0	1.0	1.2	1.2

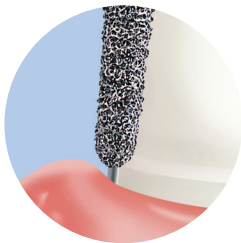
GCP™ Cutting Length
253.SA = 7mm
253.SB = 8mm
253.SC = 10mm

Gold-Plated Curettage (GCP™)	252.SA	252.SB	252.SC	253.SA	253.SB	253.SC	254.SA	254.SB	254.SC	257.SB	258.SB
Medium	2015603	2015605	2015607	2015609	2015611	2015613	2015615	2015617	2015619	2015623	2015627
Minor/Major Diameter	0.4 / 1.4	0.4 / 1.4	0.4 / 1.4	0.4 / 1.6	0.4 / 1.6	0.4 / 1.6	0.4 / 1.8	0.4 / 1.8	0.4 / 2.2	0.4 / 2.0	0.4 / 2.2

Gold-Plated TS2000	2006.7GC	2006.8GC	2006.9GC	2006.10GC	2007.7GC	2007.8GC	2007.9GC	2007.10GC	2008.7GC	2008.8GC	2008.9GC	2008.10GC
Coarse	2000067	2000068	2000069	2000070	2000077	2000078	2000079	2000080	2000087	2000088	2000089	2000090
Minor/Major Diameter	0.9 / 1.4	0.9 / 1.4	0.9 / 1.4	0.9 / 1.4	1.1 / 1.6	1.1 / 1.6	1.1 / 1.6	1.1 / 1.6	1.3 / 1.8	1.3 / 1.8	1.3 / 1.8	1.3 / 1.8

All-Ceramic Guide Pin

- Guide pin 0.5mm chamfer protects biological width
- Controlled tooth preparation with uniform cutting depth
- Eliminate lip or "j" margin defects



	Chamfer	Modified Chamfer
Guide Pin	SE740.8	SE259.8
Medium	2015966	2015964
Fine	2015967	2015965
Minor/Major Diameter	1.5 / 2.1	1.6 / 2.1

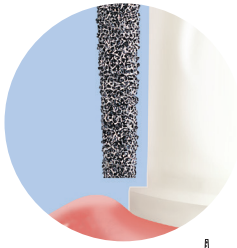
Assorted Crown Pack

(Chamfer/Shoulder)

Assorted 5-pack with our most popular Crown and Bridge Diamonds

2015500

770.8C	703.8C	250.8C	260.8C	285.5C



Shoulder Prep/Butt-Joint Margin

- Choose flat-end tapered or flat-end cylindrical diamonds to create shoulder preparations with a 90° margin

Flat-End Taper	700.5	700.6	700.8	700.9	700.11	701.5	701.7	L701.7 "L" 1.5mm longer shank	701.9	L701.9 "L" 1.5mm longer shank	702.8	703.8	703.9	703.10	704.9	708.3
Coarse	2015332	2015333	2015334	2015335	2015337	2015338	2015339	2015656	2015341	2015657	2015343	2015345	2015346	2015347	2015348	2015350
Medium																2015445
Fine				2015365	2015367		2015369		2015371		2015373	2015375		2015377		
Very Fine				2015395	2015397						2015403					
Minor/Major Diameter	0.6 / 1.1	0.7 / 1.2	0.6 / 1.8	0.6 / 1.4	0.7 / 1.8	0.8 / 1.2	1.1 / 1.8	1.1 / 1.8	0.9 / 1.8	0.9 / 1.8	0.9 / 1.4	1.2 / 1.8	1.1 / 1.8	1.1 / 1.8	1.3 / 1.8	1.3 / 2.1

Flat-End Taper	708.4	721.6	721.8	721.10	722.6	722.8	722.10	723.6	723.8	723.10	724.8	724.10	725.10	726.10	727.10
Coarse	2015351	2015354	2015355	2015356	2015357	2015358	2015359	2015255	2015256	2015257	2015259	2015260	2015446	2015448	2015450
Fine				2015386			2015389		2015262				2015447		
Minor/Major Diameter	1.3 / 2.0	0.8 / 1.1	0.8 / 1.2	0.8 / 1.3	1.0 / 1.4	1.0 / 1.5	1.0 / 1.6	1.3 / 1.6	1.3 / 1.7	1.3 / 1.8	1.5 / 2.0	1.5 / 2.1	0.9 / 1.8	1.1 / 2.0	1.4 / 2.3

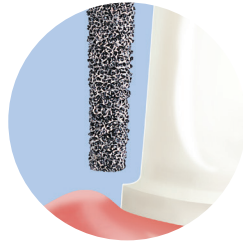
Flat-End Taper	797.11	798.10	Flat-End Cylinder	513.4	513.5	514.3	514.4	514.5	514.7	515.5	515.7	515.8	516.7	520.4
Coarse		2015442	Coarse	2015271	2015272	2015273	2015274	2015276	2015278	2015275	2015277	2015279	2015985	2015281
Medium	2015039		Medium	2015288										
Fine	2015049	2015443	Fine			2015293	2015294			2015295	2015297			
Minor/Major Diameter	0.6 / 1.2	0.5 / 1.5	Minor/Major Diameter	1.0	1.0	1.1	1.1	1.1	1.1	1.2	1.2	1.3	1.6	1.4

TS2000™													
TS2000 Flat-End Taper	2000.7	2000.8	2000.9	2000.10	2001.7	2001.8	2001.9	2001.10	2002.7	2002.8	2002.9	2002.10	
Coarse	2000007	2000008	2000009	2000010	2000017	2000018	2000019	2000020	2000027	2000028	2000029	2000030	
Minor/Major Diameter	0.9 / 1.4	0.9 / 1.4	0.9 / 1.4	0.9 / 1.4	1.1 / 1.6	1.1 / 1.6	1.1 / 1.6	1.1 / 1.6	1.3 / 1.8	1.3 / 1.8	1.3 / 1.8	1.3 / 1.8	
TS2000 Flat-End Cylinder	2013.7	2013.8	2013.10										
Coarse	2000136	2000138	2000140										
Minor/Major Diameter	1.5	1.5	1.5										



KR Modified Shoulder Prep

- Creates a margin with rounded internal angles
- Flat-end tapered or parallel diamond instruments featuring a rounded (beveled) edge



KR Cylinder	515.6	521.4	521.6
Coarse	2015986	2015987	2015989
Fine			2015988
Minor/Major Diameter	1.2	1.4	1.4

TS2000™



TS2000 KR Cylinder	2013.8KR
Coarse	2000139
Minor/Major Diameter	1.6
	837KRT-016



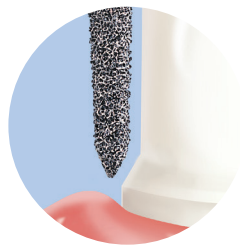
KR Taper	703.8 KR	708.4 KR	712.3 KR	722.8 KR	723.6 KR
Coarse	2015352	2015951	2015992	2015360	2015996
Fine	2015353	2015949	2015995	2015658	2015997
Minor/Major Diameter	1.2/1.8	1.3/2.0	2.0/2.2	1.0/1.5	1.0/1.5



TS2000 KR Taper	2001.8KR
Coarse	2000021
Minor/Major Diameter	1.0/1.6
	847KRT-016

Bevel Shoulder Prep

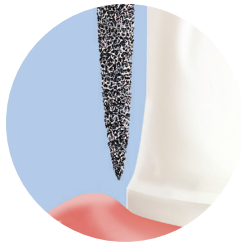
- Recommended for porcelain-fused-to-metal or cast gold crowns
- Establish a 45° - 60° angle
- Place bevel finish line



TS2000™

TS2000 Bevel-End Cylinder	2016.8	2016.10
Coarse	2000168	2000170
Minor/Major Diameter	1.4	1.8

Bevel-End Cylinder	244.10	248.8	250.8	250.9	250.11	251.8	255.8
Coarse	2015064	2015065	2015067	2015066	2015068	2015069	2015073
Medium							
Fine		2015085	2015087	2015086		2015089	2015093
Minor/Major Diameter	0.5/1.3	0.4/1.1	0.4/1.2	0.4/1.2	0.4/1.2	0.4/1.2	0.4/1.8



Flame/Feather Edge Prep/Break Contact

- Can be used for full-contour Zirconia
- Popular design for cast-gold crowns
- Margin design for tight anterior crowns and tipped or perio-involved teeth
- Thin-shaped diamond for breaking interproximal contact

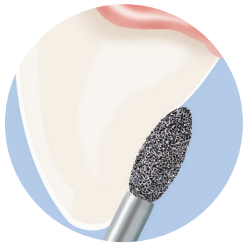
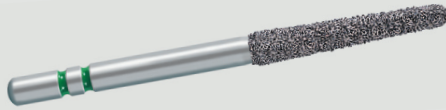
Flame	242.6	243.6	253.8	253.10	256.8	256.9	260.3	260.6.5	260.8	L260.8	260.10	261.8	262.6.5
Coarse	2015059	2015061	2015070	2015071	2015062	2015075	2015121	2015122	2015123	2015133	2015125	2015124	2015983
Medium										2015956			
Fine	2015060		2015090	2015091		2015095		2015152	2015153	2015163	2015155	2015154	
Very Fine								2015182	2015183		2015185		
Minor/Major Diameter	0.9/1.4	1.2/1.8	1.0/1.6	1.0/1.6	1.2/1.8	1.2/1.8	0.9/1.0	0.4/1.3	0.4/1.4	0.4/1.4	0.5/1.4	0.4/1.1	1.0/1.3

Flame	262.8	263.8	265.6.5	265.8	L265.8	270.5	270.6.5	270.9	275.9	290.2	Interproximal Trimmer	200.3	201.3
Coarse	2015126	2015127	2015129	2015131	2015654	2015135	2015137	2015139	2015955		Fine	2015042	2015043
Medium										2015148	Very Fine	2015052	2015053
Fine		2015157	2015159	2015161	2015655	2015165	2015167	2015169			Minor/Major Diameter	0.3/0.8	0.3/0.8
Minor/Major Diameter	1.1/1.7	0.4/1.6	0.5/1.4	0.4/1.4	0.4/1.4	0.5/1.6	0.4/1.9	0.5/1.9	0.4/2.2	1.6			

Break Contact/ Interproximal Reduction





Cone	207.7	207.10	209.6	209.10	608.9	797.11
Coarse	2015036	2015149	2015035	2015037	2015038	
Medium						2015039
Fine	2015046		2015045	2015047	2015048	2015049
Very Fine				2015057		
Minor/Major Diameter	0.4/1.4	0.5/1.9	0.4/1.6	0.5/2.3	0.4/1.4	0.6/1.2









Break Contact	203.5	700.9	700.11	777.8	798.10	799.11
Coarse		2015335	2015337	2015972	2015442	2015475
Medium				2015930		
Fine	2015054	2015365	2015367		2015443	2015505
Very Fine		2015395	2015397			2015535
Minor/Major Diameter	0.3/1.5	0.6/1.4	0.7/1.8	0.5/1.0	0.5/1.5	0.8/1.8







Occlusal & Lingual Reduction (Bulk)


- An anatomically prepared occlusal surface provides adequate clearance and allows for uniform thickness of the restoration
- Football and wheel-shape diamonds reproduce lingual concavity in crown preparation


				
Football	283.4	285.5	290.4	292.3
Coarse	2015142	2015143	2015144	2015145
Fine	2015172	2015173	2015174	2015175
Very Fine	2015202	2015203	2015204	2015205
Minor/Major Diameter	2.5	0.7 / 2.3	0.7 / 1.9	0.4 / 1.6





Depth - mm	1.0	1.5	1.5 "L" longer shank	1.7	2.0	2.0 "L" longer shank	2.4	2.8
Round								
Coarse	115	120	L120	125	130	L130	135	138
Fine	2015003	2015005	2015055	2015006	2015008	2015078	2015007	2015009
Fine	2015013	2015015		2015016	2015018		2015017	
Very Fine		2015025						
Minor/Major Diameter	1.2	1.6	1.6	1.8	2.3	2.3	2.6	3.0


			
Barrel	230	234	240
Coarse	2015063	2015076	2015077
Fine	2015083		
Minor/Major Diameter	1.3 / 3.4	1.5 / 4.1	1.2 / 4.8

	
K55	276.6.2
Coarse	2015898
Minor/Major Diameter	3.1

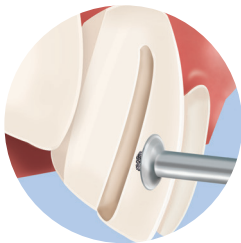
	
Egg	287.4
Coarse	2015981
Fine	2015982
Very Fine	2015988
Minor/Major Diameter	2.3





	
Occlusal Contour	204.3.5
Fine	2015952
Minor/Major Diameter	3.10

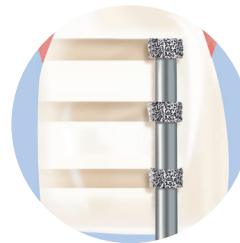
				
Wheel	860	862	863	866
Coarse	2015543	2015544	2015545	2015546
Fine	2015553		2015555	
Minor/Major Diameter	3.5	4.1	4.7	5.7



TS2000™		
TS2000 Football	2014.5	
Coarse	2000145	
Minor/Major Diameter	2.3	

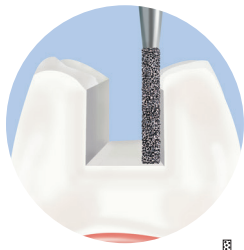
Veneer Prep



	Depth of cut (in mm):			
	0.5	0.75	1.0	1.5
D.C. Depth-Cut				
Coarse	2015776	2015785	2015802	2015803
Minor/Major Diameter	1.2	1.2	1.2	1.2



	Depth of cut (in mm):	
	0.3	0.5
Space between cuts: 1.5mm		
Depth Marker	DC0.3	DC0.5
Medium	2015970	2015971
Minor/Major Diameter	1.6	2.1



Inlay/Onlay

- Flat-end diamonds with a rounded corner create rounded internal angles for ceramic/composite inlay and onlay preparation
- Tapered instruments establish proper divergence of axial walls

Flat-End Cylinder	513.4	513.5	514.3	514.4	514.5	514.7	515.5	L515.5	515.7	515.8	516.7	520.4
Coarse	2015271	2015272	2015273	2015274	2015276	2015278	2015275	2015797	2015277	2015279	2015985	2015281
Medium	2015288											
Fine			2015293	2015294			2015295		2015297			
Minor/Major Diameter	1.0	1.0	1.1	1.1	1.1	1.1	1.2	1.2	1.2	1.3	1.6	1.4

KS Cylinder (Round Edge)	KS0	KS1		KS2	KS3	
	574.7	575.7	585.5	585.8	586.8	587.8
Coarse	2015953	2015302	2015305	2015303	2015307	2015304
Fine	2015954	2015322		2015306		
Minor/Major Diameter	1.0	1.2	1.3	1.4	1.6	1.8

KR Cylinder	515.6	521.4	521.6	521.8 S
Coarse	2015986	2015987	2015989	2015990
Fine			2015988	
Minor/Major Diameter	1.2	1.4	1.4	1.4

KR Taper	703.8 KR	708.4 KR	712.3 KR	722.8 KR	723.6 KR
Coarse	2015352	2015951	2015992	2015360	2015996
Fine	2015353		2015995	2015658	2015997
Minor/Major Diameter	1.2 / 1.8	1.3 / 2.0	2.0 / 4.0	1.0 / 1.5	1.0 / 1.5

TS2000 Flat-End Cylinder	2013.7	2013.8	2013.10	TS2000 KR Cylinder	2013.8KR
Coarse	2000136	2000138	2000140	Coarse	2000139
Minor/Major Diameter	1.5	1.5	1.5	Minor/Major Diameter	1.6

Specialty

TGE™	TGE™ (Tissue Guard End-Cutting)				
• Refine shoulder		1.0	1.2	1.4	1.6
• Safe-sided	Fine	2015836	2015838	2015840	2015842
	Very Fine		2015839	2015841	
	Minor/Major Diameter	1.0	1.2	1.4	1.6

Endo

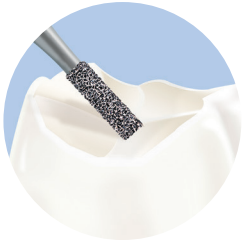
Endo*	1C RA	291.4 RA
Coarse		2013197
Medium	2013194	
*Available in single-pack only.		
RA Latch Surgical 2.35mm x 26mm		

Safe-End

Safe-End	S79
Fine	2015835
Minor/Major Diameter	1.0/1.6

Gross Reduction

Crown Cut™	SC5	SC8	SC10	ST6	ST8	ST11
Coarse	2015573	2015575	2015577	2015581	2015583	2015585
Minor/Major Diameter	1.7	1.7	1.8	1.4/1.8	1.4/1.8	1.4/1.8



Operative

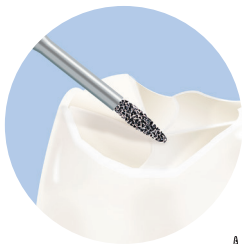
- Featuring diamond versions of popular carbides
- Cut cooler and faster with less patient trauma
- Inverted cones for removing defective restorations

Inverted Cone	310.1	315.1.75	317.4	318.5	320.2	324.1	390.3
Coarse	2015213	2015790	2015984	2015991	2015217	2015219	2015931
Fine	2015233						
Minor/Major Diameter	0.9 / 1.3	1.1 / 1.6	1.6	1.8	1.3 / 1.7	1.1 / 2.1	1.2

Operative	1/4	1	2	6	35	169L	170L	245	330	556	557	558	701
Medium	2013203	2013205	2013201	2013211	2013221	2013231	2013241	2013251	2013261	2013271	2013281	2013291	2013301
Minor/Major Diameter	0.7	0.8	1.1	1.9	1.0	0.6 / 1.1	0.7 / 1.2	0.9 / 1.1	0.8 / 0.9	0.8 / 0.9	0.9 / 1.0	1.2 / 1.3	1.0 / 1.4
	H1-005	H1-008	H1-010	H1-018	H2-010	H23L-009	H23L-010	H245-008	H24-008	H31-009	H31-010	H31-012	H33-012
Head Length mm	0.7	0.6	0.8	1.3	0.9	5.2	5.8	2.7	1.6	3.3	3.9	4.1	4.1

Pear	351.3.75	352.4	360.2	361.2.5	362.3	L362.3	364.5	365.4
Coarse	2015229	2015230	2015794	2015796	2015792	2015799	2015227	2015225
Fine	2015793							2015245
Minor/Major Diameter	1.1	1.3	0.8 / 1.0	1.0 / 1.2	1.1 / 1.3	1.1 / 1.3	1.0 / 1.4	1.2 / 1.5

Amalgam Removers	1210	1220	1240	1250
Medium	2015591	2015593	2015598	2015599
Minor/Major Diameter	0.9 / 1.3	0.9 / 1.6	0.9 / 1.1	0.9 / 1.3
Head Length mm	1.3	1.4	2.0	3.0



microprep™

MicroPrep™	MP89	MP38	MP30R	MP30	MP53	MP53A
Medium	2015957	2015959	2015960	2015961	2015962	2015963
Fine	2015958					
Minor/Major Diameter	0.7	0.7	0.9	1.2	1.4	1.4

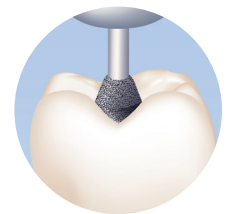
Two Striper® MFS® Finishing Diamonds



- MF1 (45μ)
- MF2 (20μ)
- MF3 (10μ)

MFS® Finishing Diamonds	135	201	257	265	285	292	799
MF1 (45μ)	2015850	2015853	2015856	2015859	2015862	2015865	2015868
MF2 (20μ)	2015851	2015854	2015857	2015860	2015863	2015866	2015869
MF3 (10μ)	2015852	2015855	2015858	2015861	2015864	2015867	2015870
Minor/Major Diameter	2.4	0.2/0.6	1.2/1.8	0.3/1.2	2.0	1.4	0.5/1.6
Head Length mm	2.2	3	8	6	5	3	11

Skooter™	0	1	2
Medium	TO - 2015188	T1 - 2015190	T2 - 2015192
Very Fine	FO - 2015189	F1 - 2015191	F2 - 2015193
Minor/Major Diameter	2.3	2.8	3.0
Reference #	905-023	905-028	905-031



Universal All-Ceramic Prep Kit



Kit # 2013555

Contains ten diamonds shown here. Anodized aluminum bur block has eight open spaces to add your own favorites.

5-pack refill numbers listed below individual shape illustrations.

All-Ceramic Prep

Depth Gauge / Occlusal / Lingual Reduction 2mm

Football	285.5
Coarse	2015143

Break Contact

Flame	777.8
Medium	2015930

All-Ceramic Prep / Shoulder

Axial Reduction / Round Internal Angles

Modified Shoulder	
KR Taper	703.8KR
Coarse	2015352
Fine	2015353

All-Ceramic Prep / Chamfer

Chamfer Margin

Round-End Taper	770.8
Coarse	2015457
Fine	2015487

Seat and Finish

Margin Finishing / Cement Removal

Flame	263.8
Fine	2015157

Interproximal Margin / Cement Removal

Flame	200.3
Fine	2015042

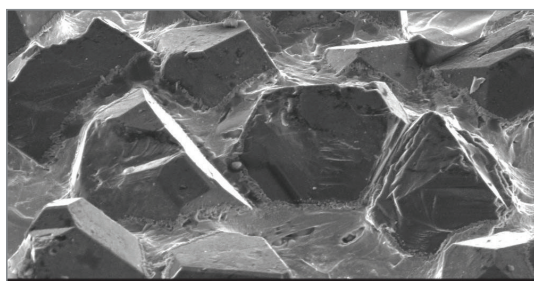
Occlusal Refinement / Adjust Bite

Football	285.5
Fine	2015173

Fine Occlusal Adjustment

Football	292.3
Fine	2015175

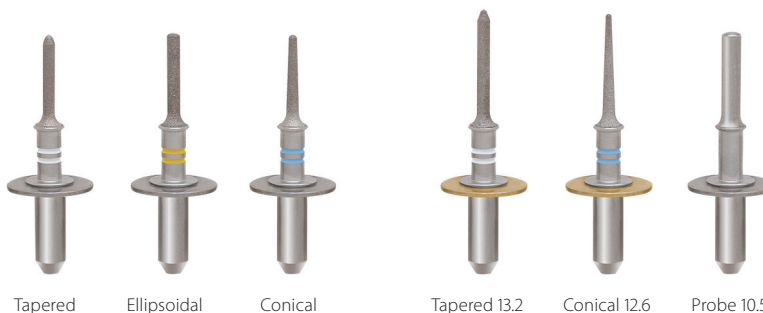
Premier® Dental for all your Planmeca Planmill diamond needs!



Premier Two Striper Tapered Milling Tool Surface - 500X

P.B.S.® bonding maximizes the exposure of diamond cutting surfaces - especially at the tips and upper circumference of the diamond instrument. Crystals, placed evenly and precisely in a uniform matrix are fused to a surgical grade stainless steel shank.

PlanMill and PlanMill 40 are trademarks of Planmeca.



PlanMill 40

2016000	Tapered (6 per box)
2016001	Ellipsoidal (6 per box)
2016002	Conical (6 per box)
2016004	Assorted (2 of each)

PlanMill S Mills

2017000	Tapered 13.2 (6 per box)
2017002	Conical 12.6 (6 per box)
2017005	Probe 10.5 (2-pack)
2017006	Assorted (1) Tapered 13.2 (1) Conical 12.6



Bur Blocks Autoclavable, Anodized Aluminum

- Patented design features center stabilizer plate
- Secure snap-close lid



Friction Grip (18 Hole)

9051021 Bur Block - Green

9051022 Bur Block - Blue

Right Angle/Friction Grip (17 Hole)

9051024 Bur Block 8 RA / 9 FG - Green

9051025 Bur Block 8 RA / 9 FG - Blue



14-Hole HP Bur Block

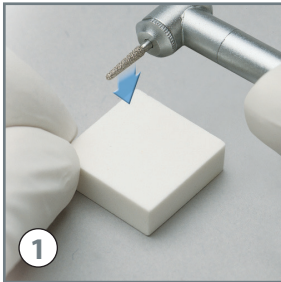
9051030

Diamond Wear Factors

All diamond instruments wear preferentially at the tip. The tip also is susceptible to greater vibration and often exposed to excessive force. On very thin-tip shapes (flames, pointed cones, etc.), there is reduced space for diamond concentration so the cutting load is magnified. A clogged diamond often prompts the operator to apply more pressure, but the combination of heat and force is very detrimental.

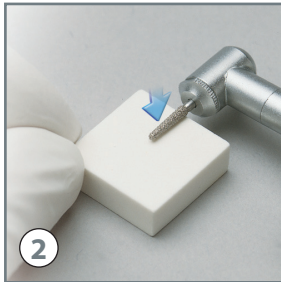
Two Striper diamond wear can be determined by following the cleaning technique below. If rapid cutting action does not return after this protocol, the diamond crystals are worn. Wear also can be determined visually by examining the diamond tip and circumference. If the diamond's crystals remain extended above the bond, the instrument still has life. If worn flat, the instrument should not be reused.

Two Striper® Diamond Cleaning Technique

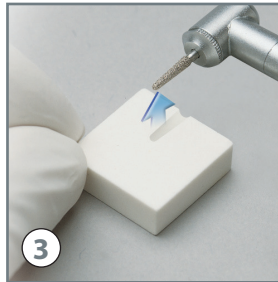


1 Hold handpiece with clogged Two Striper® diamond just above Clean-A-Diamond® Mini-Square™.

CLEAN -  - DIAMOND®

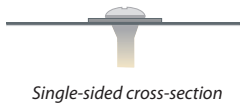


2 Make a plunge cut, down sideways with handpiece and the waterspray on (never tip first). Only the diamond head section should come in contact with the stone. Avoid contact between the stone and instrument neck.



3 Lift rotating diamond from the surface of the stone.

2014015 Clean-A-Diamond® Mini-Squares™ (Package of 12)



Single-sided cross-section



Double-sided cross-section



thin-flex® Flexible Diamond Discs with True Edge Cutting

Designed for carving ceramic and composite materials. Thin-Flex® discs are excellent for contouring and shaping all surfaces including embrasures. Thin-Flex discs have diamond crystals wrapped around the edge of the disc to avoid “black marks” during carving procedures.

Thin-Flex discs may be ordered individually or in twin-packs. Twin-packs include two discs and a mandrel. The heavy duty stainless steel HP lab mandrels feature an enlarged neck area for safer operation. The screw head and washer system guarantees true running and reduces metal fatigue.

Recommended Speed - 20,000 rpm
 Outside Diameter - 22.2mm (7/8")
 Center Hole Diameter - 1.6mm (1/16")

Single-Sided - 1/pkg.

2012633 926-7 (0.10mm, 45 μ)

2012637 928-7 (0.24mm, 60 μ)

Single-Sided - 2/pkg. with Mandrel

2012634 926-7 (0.10mm, 45 μ)

2012638 928-7 (0.24mm, 60 μ)

Double-Sided - 1/pkg.

2012653 927-7 (0.15mm, 45 μ)

2012657 929-7 (0.28mm, 50 μ)

Double-Sided - 2/pkg. with Mandrel

2012654 927-7 (0.15mm, 45 μ)

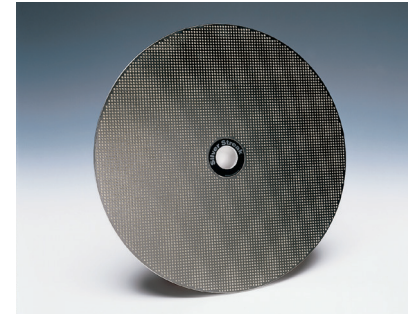
2012658 929-7 (0.28mm, 50 μ)



Mandrel Refills Heavy Duty Stainless Steel

Package of 12
2014011 HP Shank
 .25mm thread length

SILVERSTREAK™ Diamond Model Trimming Wheel



The SilverStreak™ trims models faster, runs quieter and is substantially longer lasting than traditional wheels. It has an extra coarse diamond cutting surface which is patterned for aggressive, yet cool cutting. It is light-weight, durable and perfectly balanced for concentric operation.

Thickness - 6.4mm (1/4")
 Center Hole Diameter - 25.4mm (1")

2013401 12" Extra Coarse

2013405 10" Extra Coarse

Laboratory HP Diamonds P.B.S.® Bonded - ISO Type 2 Shank 2.35mm

One per pack.

	X118	X120	X135	X150	X261.5	X265.10	X285.8.5	X324.1	X350.4	X535.7	X575.7
Coarse	2012700	2012701	2012703	2012705	2012707	2012708	2012709	2012711	2012713	2012719	
Fine		2012731	2012733			2012787	2012739	2012741	2012743	2012749	2012758
Reference #	801-018	801-016	801-026	801-036	860-014	863-014	862-026	805-022	807-030	836-027	830-026
Minor/Major Diameter	1.8	1.6	2.6	3.6	0.4/1.4	0.5/1.4	0.3/2.6	2.2	3.0	2.7	2.6

	X580.6	X590.12	X701.9	X702.10	X703.12	X767.7	X769.10	X772.10	X776.9	X884	X889
Coarse	2012720	2012682	2012723	2012759	2012724	2012725	2012762	2012765	2012726	2012770	2012727
Medium		2012681									
Fine	2012750	2012680	2012753			2012755	2012730	2012736	2012756		2012757
Reference #	836-052	842R-012	847-016	848-020	848L-025	855-018	850-018	850-025	856-040	825-046	825-067
Minor/Major Diameter	5.2	1.2	0.8/1.8	1.2/2.0	1.4/2.5	1.0/1.8	0.7/1.8	1.4/2.5	2.9/4.0	4.6	6.7

TSZTECH™

A New Diamond Technology
for Today's Advanced Materials -
Lithium Disilicate and Zirconia



X590.12Z

2012847

Minor/Major
Diameter
1.2

X769.10Z

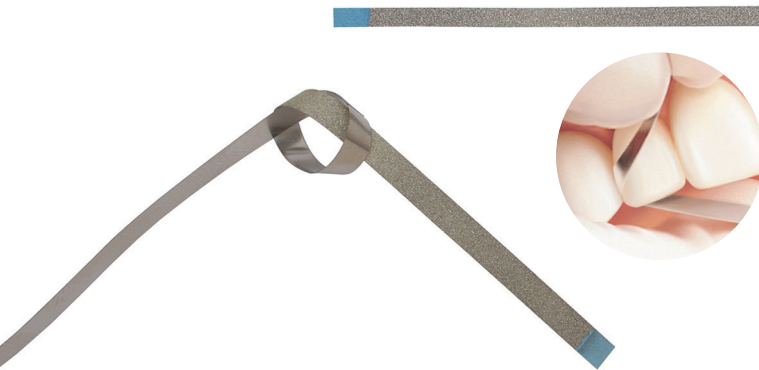
2012845

Minor/Major
Diameter
0.7/1.8

Compo-Strip®

Hand-Held Stainless Steel
Diamond Finishing Instruments

1/2" Uncoated
Safe-center!



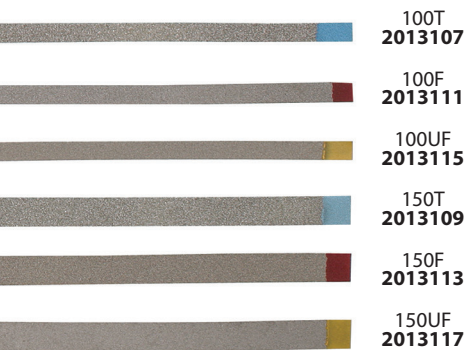
Compo-Strip® diamond strips are thin, flexible, one-sided diamond abrasive strips available in two widths and three grits. They have an uncoated safe center for easy access through the contact point and are ideal for finishing Class III, IV and veneer restorations.

2013127 Package of Six Assorted Strips

Finishing Notes

- Use Compo-Strip® in sequence; Blue, Red, Yellow
- Trimming (Blue) may be used separately to roughen enamel
- Finishing in a wet field is preferred. If light staining appears, flush area and use new section of strip

Individual Packages of Six Strips



100T
2013107

100F
2013111

100UF
2013115

150T
2013109

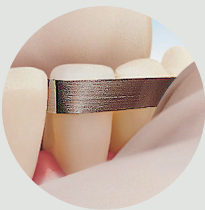
150F
2013113

150UF
2013117



Length: 15.25mm

Width	Grit	Thickness
100 = 2.5mm	T = 60µ	0.15mm
150 = 3.75mm	F = 45µ	0.127mm
	UF = 20µ	0.1mm



Compo-Strip® 200T2

For Orthodontic Reproximation

Simultaneously strip away enamel from adjacent proximal surfaces. Flexible, Double-sided with Safe Center
Length: 15.25mm • Width: 4mm • Grit: 60µ

2013180 Compo-Strip 200T2 (Ortho) (Pkg. of 3 strips)

Compo-Disc®

Hand-Held Diamond Finishing Instruments

For extremely tight contacts, use a Compo-Disc® to gain access. Safe-sided, edge and face-cutting.

Thickness: 0.1mm • Diameter: 22.2mm • Grit: 35µ - 45µ

2013106 Compo-Discs (Pkg. of 2 discs)



Finishing & Polishing

LUMINESCENCE®

Single-Gel Diamond Polishing

Polish all surfaces in half the time!

Luminescence is a patented, single-gel diamond polishing system. In less than two minutes, you can polish the surface of all restorative materials: composite, glass ionomer, compomer, amalgam, precious metal and enamel. Even porcelain achieves a lustrous surface in only minutes due to the optimal concentration of micron-sized diamond particles.



2014200 Luminescence Intro Kit
(3g syringe of Luminescence gel,
2 RA Mandrels, 50 applicators)

2014202 Luminescence Gel (3g)

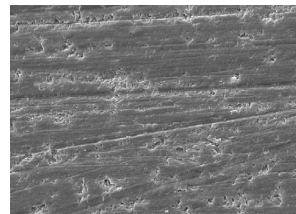
2014204 RA Mandrels (2)

2014206 Applicators (50)

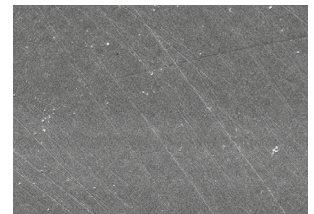


"Optimum Polishing results on the CAD/CAM Vita Mark II ceramic."⁶

"Adjustment finishing with a Two Striper MF2 or MF3 alone, or as a final finishing stage after using a more coarse finishing diamond, followed by a 60-second polishing sequence with Luminescence diamond gel, was an effective procedure for optimum polishing results on the CAD-CAM Vita Mark II ceramic."



Vita Mark II Ceramic
Pre-finish surface reference



Vita Mark II
Final surface appearance
after MF2 Diamond finish and
Luminescence application

LUMINESCENCE PLUS!

Diamond Polishing Paste for Patient Comfort + All-Surface Esthetics



- **All-Surface Polishing** - composite + porcelain + enamel + glass ionomer + precious metals + amalgam
- **Single-Grit/Single-Step Paste** - saves chair-time
- **Increase Patient Comfort** - contains potassium nitrate topical desensitizer
- **Convenient** - screw-tube dispenser + improved viscosity eliminates waste

2014208 Luminescence Plus![™] Gel (3g)
(Not available in Canada)

6. American J. Dentistry, Feb. 2000. Post adjustment polishing of CAD/Cam ceramic with Luminescence Diamond Gel. W.J. Finger.

Faster! Super-Charged Diamond Polishing

Single-paste System for Ceramics and Composites

Recommended for
Zirconia and
Lithium Disilicate

Diamond Twist SCL™ Extra-Oral Polishing Kit

Glaze-like, multi-surface polishing - featuring advance open-weave fibra pre-polishers and 100% wool-paste applicators - for a super-charged mirror polish.

- Pre-polish with Fibra Points (barrel, wheel or taper); open-weave design generates significantly less heat
- Final polish with Diamond Twist Super-Charged Polishing Paste applied with felt barrel, wheel or point for a glaze-like polish

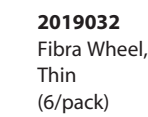


2019000
Diamond Twist SCL™ Kit

Products below shown 75% of actual size.



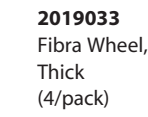
2019001
6g Diamond Twist SCL Polishing Paste (unflavored)



2019032
Fibra Wheel, Thin (6/pack)



2019021
Felt Wheel, Thin (10/pack)



2019033
Fibra Wheel, Thick (4/pack)



2019020
Felt Wheel, Thick (5/pack)



2019031
Fibra Point, Taper



2019022
Felt Point



2019030
Fibra Point, Barrel



2019050
Standard Mandrel



2019051
SurGrip Mandrel

Diamond Twist SCO™ Intra-Oral Polishing Kit

After permanent seating and adjustments, polish crowns, inlays, onlays and nano-hybrid composites intra-orally in one easy step using Diamond Twist Super-Charged Polishing Paste.

- Use the flat or taper polishing brushes (autoclavable) for posterior occlusal surfaces
- Use the Micro-Cloth disks for polishing and final high-gloss buffing
- Twist syringe avoids cross-contamination and dispenses just the right amount



2019002
Diamond Twist SCO™ Kit

Products below shown 75% of actual size.



2019003
3g Diamond Twist SCO Polishing Paste (mint flavored)



2019005
Tapered Polishing Brushes (25/pack)



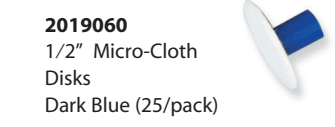
2019004
Flat Polishing Brushes (25/pack)



2019091
FG Mandrels (4/pack) not included in kit



2019090
RA Mandrels (4/pack)



2019060
1/2" Micro-Cloth Disks Dark Blue (25/pack)



2019061
5/16" Micro-Cloth Disks Light Blue (25/pack)

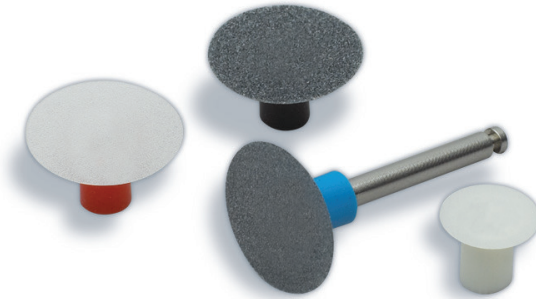
Finishing & Polishing

Poli-Pro Disks™ Composite Polishing System



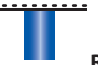
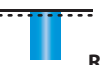

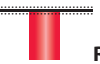

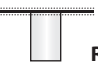
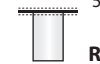


- Safe-Center - protects composite surface
- Faster - complete abrasive coverage of disk surface
- Thin and flexible - conforms to tooth anatomy
- Systematic finishing and polishing - single-use color-coded disks
- Two sizes:
1/2" for greater efficiency,
5/16" for control in gingival areas






Faster Polishing! / No Gouging!

15% more surface area than metal-centered disks!



All refill packs contain 40 disks.

 <p>1/2" Coarse (12mm) Refill #2019071</p>	 <p>5/16" Coarse (8mm) Refill #2019072</p>	 <p>1/2" Medium (12mm) Refill #2019073</p>	 <p>1/2" Medium (12mm) Refill #2019074</p>	 <p>5/16" Medium (8mm) Refill #2019075</p>
 <p>1/2" Fine (12mm) Refill #2019076</p>	 <p>5/16" Fine (8mm) Refill #2019077</p>	 <p>1/2" Extra-Fine (12mm) Refill #2019078</p>	 <p>5/16" Extra-Fine (8mm) Refill #2019079</p>	 <p>RA Mandrels (4/pack) Refill #2019090</p>
				 <p>FG Mandrels (4/pack) Refill #2019091</p>

-  **Coarse** - 80 microns (grit up)
-  **Medium** - 40 microns (grit up)
-  **Medium** - 40 microns (grit down)
-  **Fine** - 30 microns (grit both sides)
-  **Extra-Fine** - 9 microns (grit both sides)

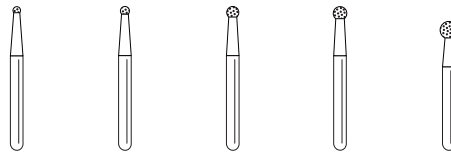


2019070 Intro Kit
(180 disks, 4 mandrels)

2019099 Starter Kit
(35 disks, 1 mandrel)

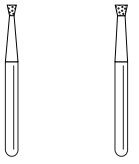
Solo Diamond®
Premium Diamond Burs

Ball



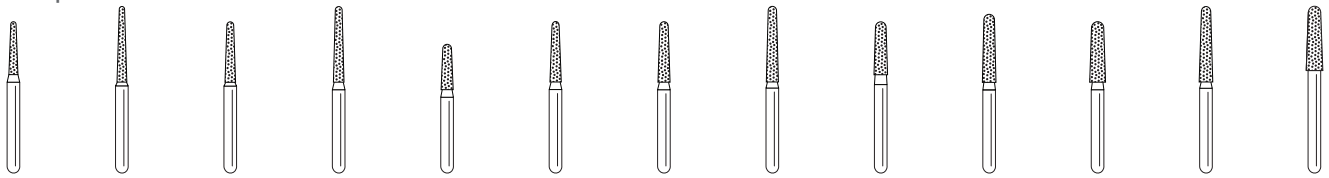
Coarse			801016C	801018C	801023C
Medium	801010M	801012M	801016M	801018M	801023M
Fine					801023F
D/L	1.0/0.8	1.2/1.0	1.6/1.4	1.8/1.6	2.3/2.2
Shape #	0110	0112	0116	0118	0123

Inverted Cone



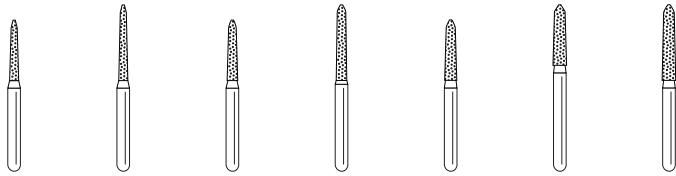
Coarse		805016C
Medium	805012M	
Fine		
D/L	1.2/0.9	1.6/1.4
Shape #	0312	0316

Round-End Taper



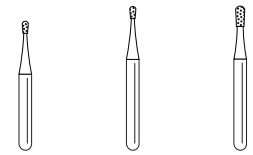
Coarse	856012C	850012C	856014C	850014C	855016CS	856015C	856016C	850016C	856018C	856L018C	856021C		856022C
Medium			856014M	850014M	855016MS		856016M	850016M	856018M	856L018M		850018M	
Fine			856014F	850014F			856016F	850016F					
D/L/TD	1.2/7/0.7	1.2/10/0.7	1.4/8/0.9	1.4/10/0.9	1.6/6/1.1	1.6/8/1.1	1.8/8/1.1	1.6/10/1.1	1.8/7/1.2	1.8/9/1.2	2.1/8/1.4	1.8/10/1.2	2.2/8.5/1.8
Shape #	1112.7	1112.10	1114.8	1114.10	1116.6	1115.8	1116.8	1116.10	1118.7	1118.9	1121.8	1118.10	1122.8

Curettage K



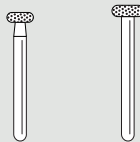
Coarse	878K012C	879K012C	878K014C	879K014C	878K016C	878K018C	879K018C
Medium				879K014M			879K018M
Fine	878K012F		878K014F				
D/L/TD	1.2/8/0.8	1.2/10.0/0.8	1.4/8.0/1.0	1.4/10.0/1.1	1.6/8.0/1.2	1.8/8.0/1.4	1.8/10/1.4
Shape #	1712.8	1712.10	1714.8	1714.10	1716.8	1718.8	1718.10

Pear



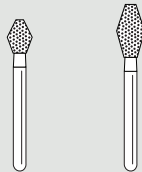
Coarse			
Medium	830008MS	830008M	830012M
Fine			
D/L	0.8/1.6	0.8/1.6	1.2/2.7
Shape #	0508	0508	0512

Wheel



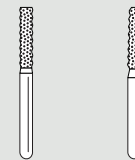
Coarse	909037C	909040C
D/L	3.5/1.3	4.2/1.5
Shape #	2035	2042

Barrel



Coarse	811033C	811037C
D/L	3.3/4.4	3.7/7.0
Shape #	2133	2137

Gross Reduction



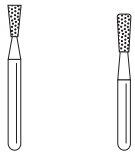
Coarse	6051017C	6055018C
D/L/TD	1.7/8.0	1.8/8.0/1.3
Shape #	2217	2218

Round-End Taper



Coarse	856025C
D/L/TD	2.4/7/1.8
Shape #	2424

Large Inverted Cone



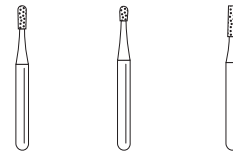
Coarse	807016C	807018C
Medium		
Fine		
D/L	1.6/4.0	1.8/5.0
Shape #	0316.4	0318.5

Double Inverted Cone



Coarse	
Medium	813014M
Fine	
D/L	1.4/2.2
Shape #	0416

Operative



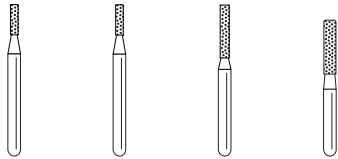
Coarse			
Medium	H245008M	H330008M	H557010M
Fine			
D/L/TD	1.1/2.8/0.9	0.9/1.6/0.8	1.0/4.2/0.9
Shape #	FG245	FG330	FG557

Modified KR Tap



Coarse	846KR016C
Medium	
Fine	846KR016F
D/L/TD	1.6/8.0/1.1
Shape #	0816.8

Flat-End Cylinder



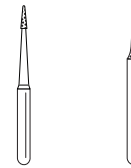
Coarse		835010C	837012C	837016C
Medium	835010MS	835010M		
Fine			837012F	
D/L	1.0/4.0	1.0/4.0	1.2/7.0	1.6/8.0
Shape #	0710MS	0710	0712.7	0716.8

Pit & Fissure



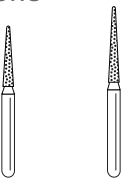
Coarse	
Medium	
Fine	8889MFS
D/L/TD	0.8/3.0/0.4
Shape #	1300FS

Interproximal



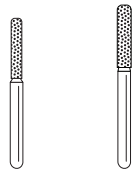
Coarse		
Medium	132008M	392016M
Fine	132008F	
D/L/TD	0.8/3.0/0.3	1.5/5/0.3
Shape #	1310.3	1416

Pointed Cone



Coarse	858014C	859014C
Medium		859014M
Fine	858014F	859014F
D/L	1.4/8.0	1.4/10.0
Shape #	1314.8	1314.10

Modified KR Cylinder



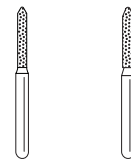
Coarse	837KR014C	837KR018C
Medium		
Fine		
D/L	1.4/8.0	1.8/8.0
Shape #	0614.8	0618.8

KS Cylinder



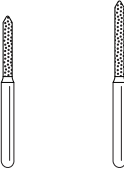
Coarse	KS0010C	KS1012C	KS2014C
Medium			
Fine		KS1012F	
D/L	1.0/7.0	1.2/7.0	1.4/8.0
Shape #	1210.7	1212.7	1214.8

Modified Beveled Cylinder



Coarse	878012C	878014C
Medium		
Fine		
D/L	1.2/8.0	1.4/8.0
Shape #	1800.8	1804.8

Beveled Cylinder



Coarse	885012C	886012C
Medium		
Fine		
D/L	1.2/8.0	1.2/10.0
Shape #	1812.8	1812.10

Modified KR Taper Large



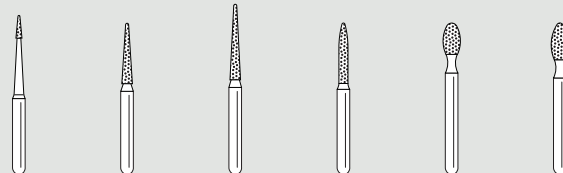
Coarse	845KR025C
D/L/TD	2.5/4.0/2.0
Shape #	2525

Acorn



Fine	905028F
D/L	2.8/4.0
Shape #	3028

Finishing



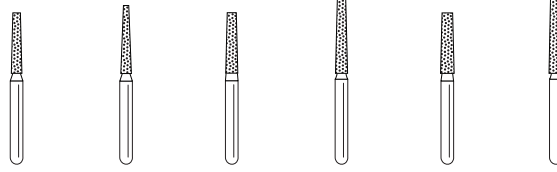
Extra Fine	132008EF	134014EF	135014EF	862012EF	379023EF	368023EF
D/L	0.8/3.0	1.4/8	1.4/10.0	1.2/8.0	2.3/4.2	2.3/5.2
Shape #	3310.3	3314.8	3314.10	3512.8	3900	3923

per



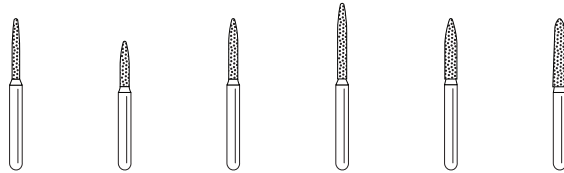
845KR018C	847KR012C	847KR018C
	847KR012F	847KR018F
1.8/4.0/1.4	1.2/8.0/0.09	1.8/8.0/1.35
0818.4	0812.8	0818.8

Flat-End Taper



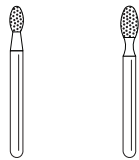
Coarse	847014C	847L014C	847016C	848016C	847018C	848018C
Medium					847018M	
Fine	847014F		847016F	848016F		
D/L/TD	1.4/8/1.0	1.4/9/0.7	1.6/8/1.2	1.6/10/1.1	1.8/8/1.4	1.8/10/1.4
Shape #	0914.8	0914.9	0916.8	0916.10	0918.8	0918.10

Flame



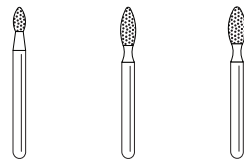
Coarse	862010C	860012CS	862012C	863012C	862016C	862L018C
Medium	862010M		862012M			
Fine	862010F		862012F	863012F	862016F	862L018F
D/L	1.0/8	1.2/6.0	1.2/8.0	1.2/10.0	1.6/8.0	1.8/9.0
Shape #	1510.8	1512.6	1512.8	1512.10	1516.8	1518.9

Egg



Coarse	379018C	379023C
Medium		
Fine	379018F	379023F
D/L	1.8/3.4	2.3/4.2
Shape #	1908	1900

Football



Coarse	368016C	368020C	368023C
Medium		368020M	368023M
Fine	368016F	368020F	368023F
D/L	1.6/3.2	2.0/5.0	2.3/5.2
Shape #	1916	1920	1923

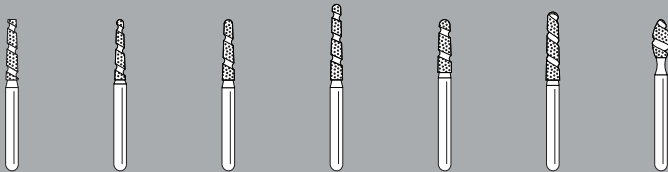
Instrument Code

Coarse	151µ	862012	C	
Medium	126µ	862012	M	
Fine	64µ	862012	F	
Extra Fine	46µ	862012	EF	
Diameter/Length/Tip Diameter		in mm		
Shape Number		1512.8		
S - short-shank		862012C		S

Price Levels

Standard
Large Specialty Finishing
Spiral
<i>Pricing available from authorized dealer</i>

iral



Coarse	837T016C	856T014C	856T016C	850T016C	856T018C	856LT018C	368T023C
D/L	1.6/8	1.4/8/0.9	1.6/8/1.1	1.6/10/1.1	1.8/7/1.4	1.8/9/1.4	2.3/5.2
Shape #	8716.8	8114.8	8116.8	8116.10	8118.7	8118.9	8923



Never a dull moment. And no wasted ones either!

Always sharp, each Solo Diamond® is engineered to provide a superior cut. And because each Solo Diamond is pre-sterilized, you're ready to go right out of the package. That means ideal workflow efficiency. Every patient. Every time.

- Gamma-Sterilized to reduce cross-contamination risks
- 5-year pouch seal integrity validation on every Solo Diamond
- Wide variety of clinical shapes and diamond grits
- Manufactured and Sterilized in the U.S.A.
- Stop guessing about worn diamonds and feel the difference cutting with a sharp, new Solo Diamond
- Eliminate unnecessary bur blocks and simplify bur management with sterile, easy-to-read sealed diamond pouches in convenient boxes of 25
- Order Solo Diamonds from your favorite dental supplier today!



Find Your Solo Diamond®!

Easily convert many diamond brands to a Solo Diamond®. To use this versatile web-based program go to

findmybur.com

or scan the QR code.





Digital Dentistry Optimization Kit

This kit is your integral guide and solution to ceramic success!

Whether using digital scanners, CAD/CAM milling or traditional impressions, predictable all-ceramic restorations are now as easy as 1-2-3. The kit contains all the appropriate materials and presents a conservative and predictable technique to ensure proper tooth preparation, clear effective retraction/hemostasis, any adjustments and a smooth polish.

2013900 Digital Dentistry Optimization Kit

- | | | |
|---|--|---|
| 6 Two Striper® diamonds
(L120C, 285.5C, 777.8M, 703.8C KR, 770.8C, 285.5Z) | 2 Traxodent® 0.7g syringes | 1 felt taper applicator |
| 1 autoclavable bur block | 5 Premier® Retraction Caps | 4 Micro-Cloth Disk intra-oral paste applicators |
| 10 Solo diamonds | 6 Traxodent Applicator Tips | 1 RA mandrel |
| (2 each of 801018M, 368023C, 862012C, 847KR018C, 856L018C) | Knit-Pak™ retraction cord | 1 step-by-step technique guide |
| | 1 Diamond Twist polishing paste 2g dispenser | |

1 Prep

Prep in your comfort zone. Choose a chamfer or modified shoulder, in a Two Striper® or Solo Diamond® bur. Benefit from these carefully selected designs used in a step-by-step technique for conservative tooth preparation.



2 Retract

Proper tissue management (retraction and hemostasis) is imperative to achieving an ideal digital scan or impression. Traxodent® can be used alone or with Knit-Pak™ retraction cord, as part of a double cord technique and/or with a retraction cap.



3 Adjust/Polish Ceramics

Diamond Twist SCL™ polishing paste can be used extra-orally or intra-orally to achieve a high-gloss ceramic surface. If the bonded restoration requires minor adjustment in the mouth, the TSZtech™ football is ideal; the proprietary grit helps avoid micro-fractures.



premier Inspired solutions
for daily dentistry®



Premier® Dental Products Company • 1710 Romano Drive, Plymouth Meeting, PA 19462, U.S.A.
Phone 888-670-6100 • 610-239-6000 • Fax 610-239-6171 • premierdentalco.com • info@premierdentalco.com

® Premier is a registered trademark of Premier Dental Products Company

©2019 Premier Dental Co. | All Rights Reserved. / 1. SDM Data 2019.

8621257 Rev20 1219076 CRW15M