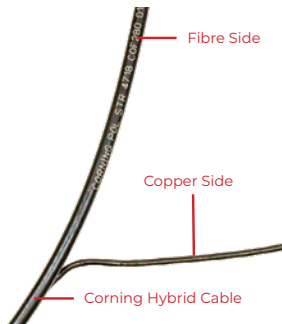


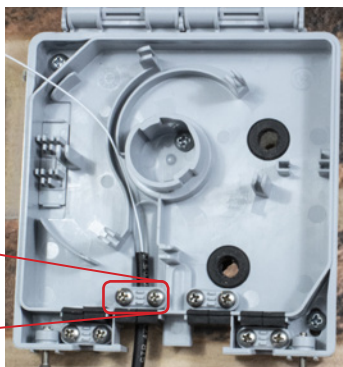
# DEX-Openreach CSP

## Section 2 - FTTP OH Corning hybrid fibre cable



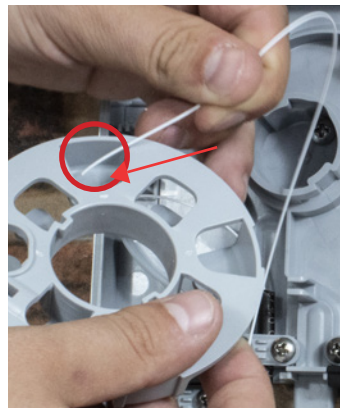
### Step 1. Prepare incoming hybrid OH cable

- Separate copper cable from fibre Cable.



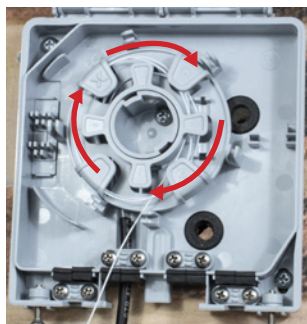
### Step 2. Crimp hybrid copper cable onto lead in copper cable

- Crimp CW18A's into 2-5 Closure (Gel-filled), for copper provisioning.



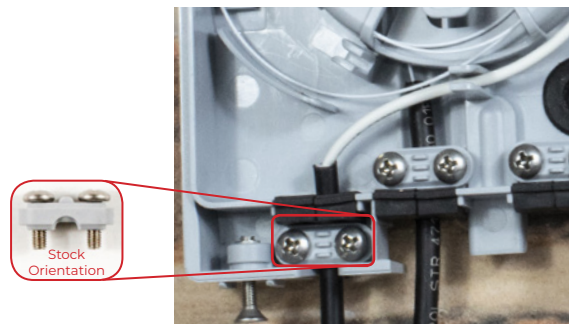
### Step 3.1. Secure cable to incoming CSP

- Secure outer sheathing of cable to the bottom strain relief, by screwing it in place with the strain relief clips.
- Strip at least 1m of outer sheathing and store stripped part of the cable into slack storage tray, to allow for splicing.



### Step 3.2. Route into slack storage tray

- Route incoming cable through the back of the slack storage tray, through the slot located by 'X'.



### Step 3.3. Store incoming cable

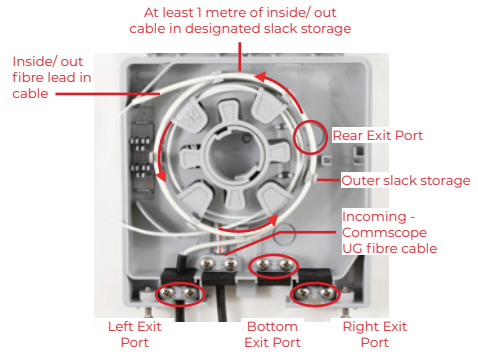
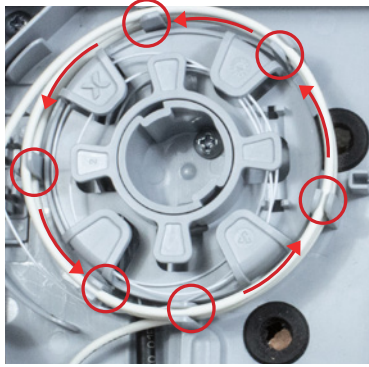
- The cable is stored clockwise, as shown above.
- Note:** Maximum storage length of the slack storage tray is 3m @ 3mm diameter.

### Step 4.1. Secure cable to strain relief

- Once inside/ out cable is terminated inside customer premises, feed it from the ECLI cover along eaves of customer premises to entry port of CSP box.
- Cleat inside/ out cable securely to external eaves of customer premises.
- Secure outer sheathing of inside/ out cable to bottom strain relief, by screwing it in place.

# DEX-Openreach CSP

## Section 2 - FTTP OH Corning hybrid fibre cable

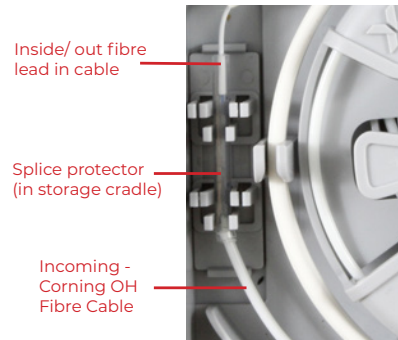


### Step 4.2. Route cable into storage guides

- Strip at least 1m of the outer sheathing of inside/ out cable and store stripped part of the cable in CSP box in the designated slack storage guides.
- The cable is routed anti-clockwise, as shown above.
- Note:** In this case, the inside/ out cable is fed into left cable entry port of CSP box.

### Step 4.3. Store Inside/ Out cable

- Two and a half revolutions or 1.2m of cable is required, for the cable to be secure within outer slack storage guides.
- Note:** There are a total of 4 cable entry ports for inside/ out cable highlighted in the diagram.



### Step 5. Mark Splice

- At splice storage cradle, mark the cables where they cross for accurate fusion splice.

### Step 6. Splicing

- Splice the incoming (Corning OH fiber cable) on to the outgoing (inside/ out cable)
- Place splice protector into splice storage cradle within CSP.