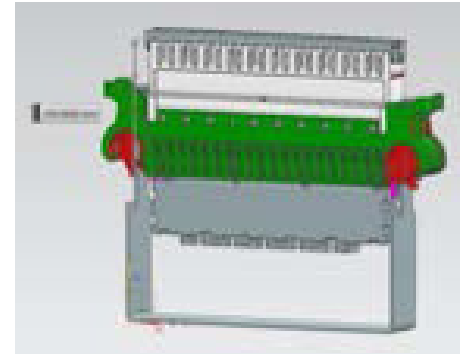
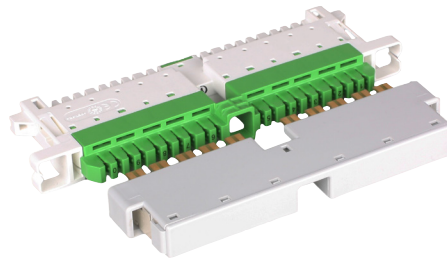
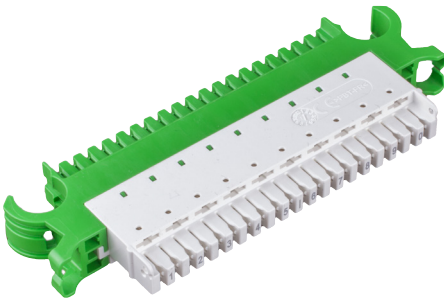


1.1 LSA Overview

Connection & Disconnection Modules

► LSA - HD - RS and LSA-HD-P-RS



Application

- Module with LSA-contacts (45° angle) for connecting plastic-insulated copper conductors with solid or stranded copper cores (stranded)
- Complies with IEC 60352J4 and DIN 41611-6-C-EL-CL
- Both permanent and removeable overvoltage protection possible
- Printed with numerals "1 ... 0"
- Meets technical requirements of Deutsche Telekom AG
- Colour:
 - o Connection module.....Jumper RAL 7035 (light grey), cable side RAL 6018 (green)
 - o Disconnection module.....Jumper RAL 9010 (pure white), cable side RAL 6018 (green)

Technical Specifications

Climate Area

For application in dry or damp rooms without condensation

- Temperature range during storage -40 to +90 °C (-40 to 194 °F)
- Temperature range during operation -40 to +80 °C (-40 to 176 °F)

Mechanical characteristics for Housing

- Material.....PBT-PC
- UL 94 flammability ratingselfextinguishing, VJ0
- Dimensions
 - o Width112mm
 - o Height.....12.5mm
 - o Depth.....42mm
- Weight.....29g

Mechanical specifications for plastic - insulated copper conductors

- Head diameter
 - o Circuit with two massive cores (Same diameter and the same type).....
 - o0.35 to 0.65 mmc AWG 27 to 22
 - o Simple circuit with strand tinned7x 0.12 to 0.32 mmc AWG 28 to 20
- Outer diameter (insulation PVC and PE)0.60 to 1.40mm
- Repeatability of the wires connections
 - o With stranded or solid conductors 0.35 to 0.65 mm200x
 - o With solid conductors 0.80 mm50x
- Contact materialSpecial brass plated

1.1 LSA Overview

Connection & Disconnection Modules

Technical Specifications (continued)

Electrical specifications

The electrical parameters were determined after 4 days of storage under constant conditions at 40°C (104 ° F) and 93% relative humidity.

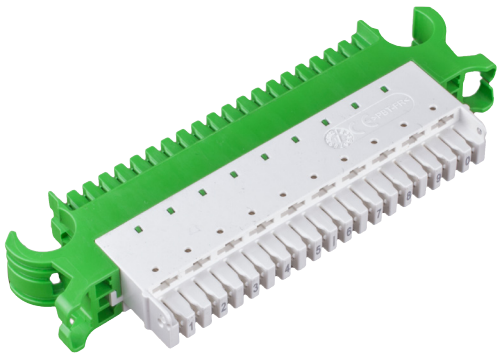
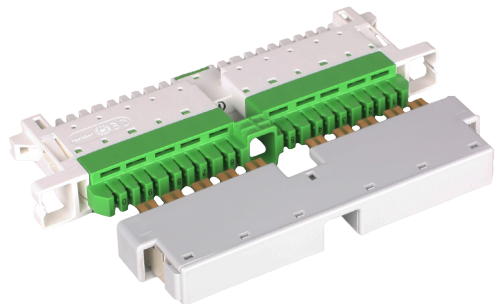
- Insulation resistance 500 V.....>5x10⁴ MΩ
- AC resistance2kVeff
- Impulse withstand voltage (waveform 1,2/50 μs).....3,6kV
- Permissible surge current (waveform 8/20 microseconds) of the LSA contact
 - o At Core diameter ≥ 0.6 mm.....10kA
 - o At Core diameter < 0.6 mm.....5kA
- Contact resistance (wire connection)
 - o Typical1,0mΩ
 - o Guaranteed≤2,5mΩ

Transmission Technical Values

The LSA-HD® P-profile bars are suitable for the following communications applications:

- xDSL and other analog and digital telephone service
- Ethernet (10BaseT) mit 10 MBit/s
- Token Ring mit 4 or 16 MBit/s
- TPDDI with 100 MBit/s
- More data and communication services

Ordering Information

Code	Description	Picture
1015 1010	LSA-HD-P connection module with permanent overvoltage protection	
1015 1110	LSA-HD-P disconnection module with permanent overvoltage protection	
1016 1010	LSA-HD-P connection module without permanent overvoltage protection	
1016 1110	LSA-HD-P disconnection module without permanent overvoltage protection	