



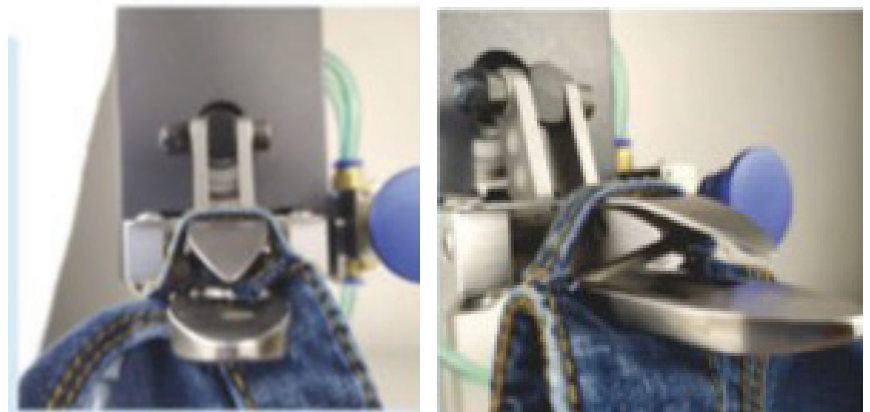
EMPENZO[®]
INDUSTIAL GARMENTS PTE. LTD.

SOLUTION MACHINE



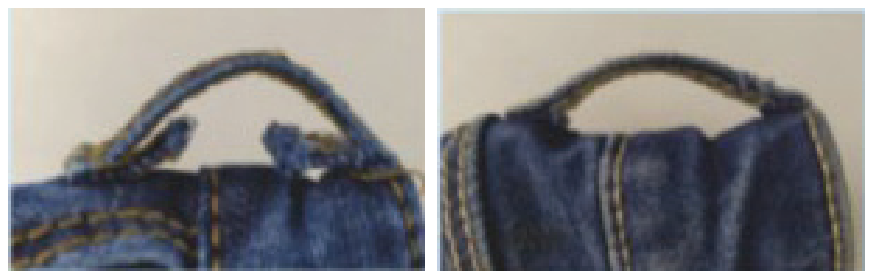
YOUR RELIABLE PARTNERS

www.empenzo.com



Before

After



Features

Belt Loop Trimmer is applied in cut belt loop to trim excess ends.

This kind of cutter is designed to those trouser, skirts and overcoats after washing. The cutting quantity of loop 's 600-900 pieces per hour.

It needs little effort for hand operation. It is easily installed,

Just on the table surface and is convenient for height adjustment,

Operation Air Pressure : 0.2 to 0.8 mpa
Temperature Limit : +20 to +50
Cutting Quantity Per Hour : 600 to 900
Tube Connection : 6/4 inch cylinder



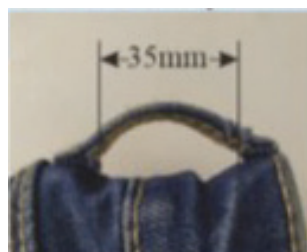
~ 300 LOOPS

**Saved time
= Saved money**

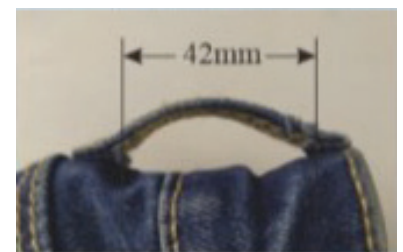


~ 600 - 900 LOOPS

Two versions available : 35mm or 42mm

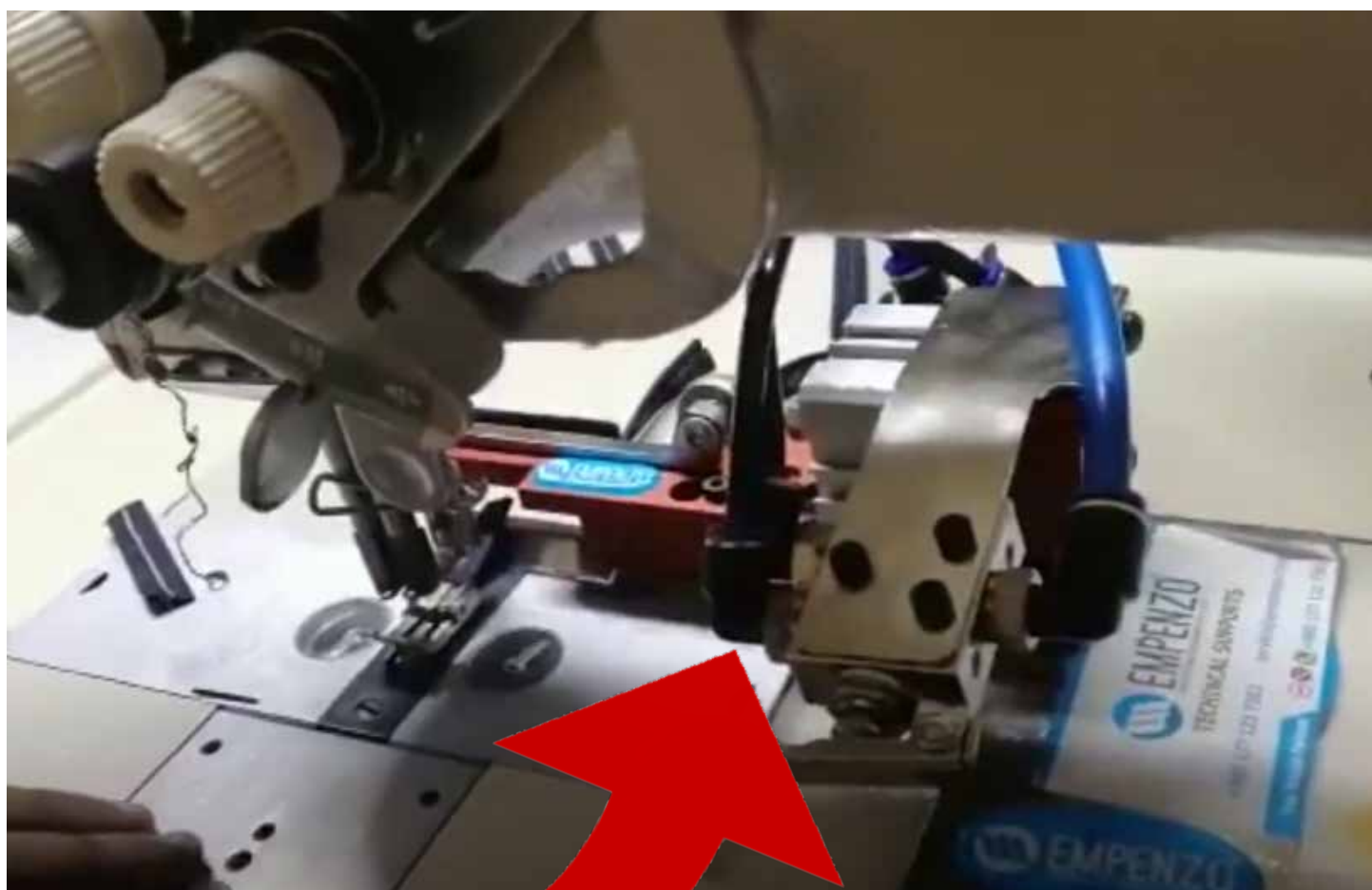


Kids Jeans



Adult Jeans

Easy installation
Activated By Hand
Adjustable Height



Best quality
with large
production



Details

External Thread Cutter Best solutions for the Pocket facing top cover stitch machines .



Technical Feature

- 1.Laser point marker »Smart finger protection system.
2. Digital counter »Used for driving buttons, eyelets, rivets and other metal accessories.
- 3.Used for punching, punching and marking work.
- 4.2,000 - 4,000 flashes per hour.
- 5.It saves power,It is durable and easy to use.
- 6.It can be used for driving all kinds of buttons, eyelets, rivets and similar textile accessories.
- 7.It can be used for driving, drilling and marking processes.
- 8.It can make 2,500-3,000 pieces per hour depending on the material and mold used.
- 9.t works silently,saves space thanks to its ergonomic design.
- 10.It is economical with its economical power consumption.

Technical Specifications

Model	EPZ-MMZ-13
Operating Voltage	AC- 380Volt - 50Hz (Three Phase)
Fastening Speed	3 Strokes / Second
Course Length & Jaw Depth	54 mm & 90 mm
Motor	0.37 kw - 1400 rpm
Max Power	0.37Kw
Width/Length/Height	500 mm/ 650 mm/1190 mm
Weight	40 kg



Technical Feature

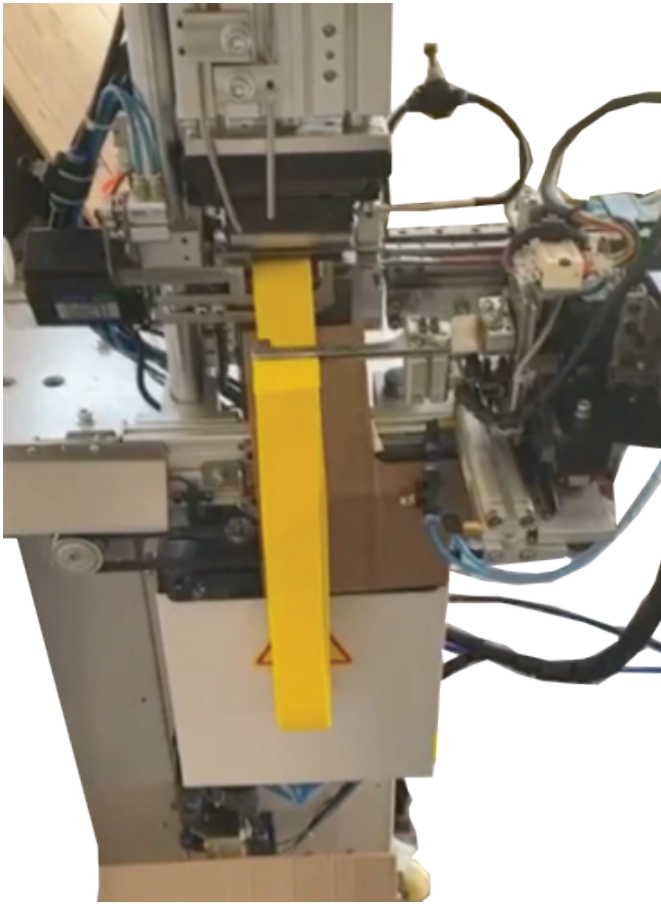
- 1.Motor: 220W 0.12 1400D / min.
2. From the moment of start, min. 1000m yarn winding.
- 3.Winding feature adjustable from potency to 500/5000.
- 4.It transfers the rope to the bobbin without any jolt and damage.
- 5.It automatically stops at the set metering.

**SPECIAL DESIGN
ULTRASONIC
CUTTING**



Technical Feature

- 1.7 inch touch screen.
2. Additional content.
- 3.Counting every job done, recording in the memory.
- 4.Plc control system.
- 5.Remote controlled internet support service.
- 6.Tmr operator display support.
- 7.Pneumatic.
- 8.6.5 bar air.
- 9.Steel body.
- 10.Input 220 volts 10 amp 50hz.
- 11.System feeding 24dc.
- 12.35khz rise cut and paste printing power 0.160kg.



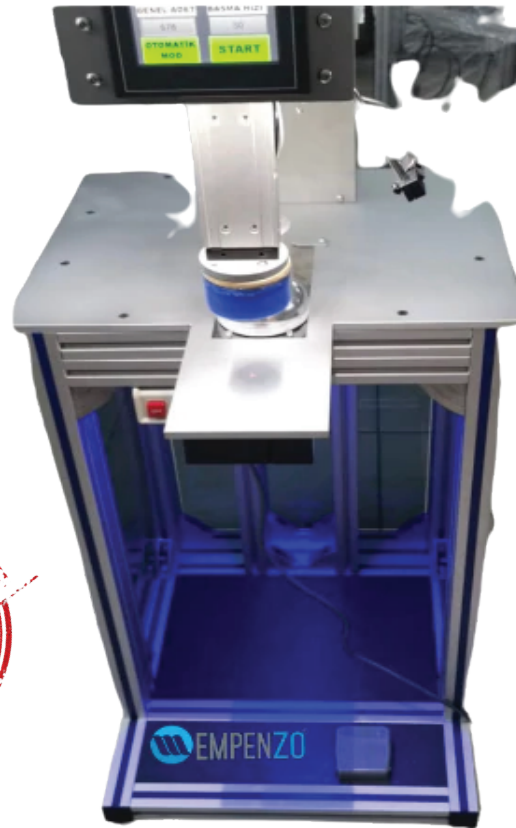
Fully
Automatic
Operation

Technical Feature

- 1.Registering 7 sizes on 2 screens.
- 2.Option to change 3 registered body sizes.
- 3.Manual raising and lowering cutting and gluing torque.
- 4.Counting all the work he does.
- 5.Setting up a clock with 6 special programs.
- 6.It is cut in different body sizes and prepared out of hours.
- 7.Automatic manual operation.
- 8.10 hours of date.
- 9.Product output speed settings.
- 10.Cutting in 12 desired pieces.
- 11.Remote technical service.

Technical Details

- 1.7inch touch screen.
- 2.Plc control systems.
- 3.Pneumatic supports
- 4.Sonic cut paste
- 5.Supply 220 volt 24 dc
- 6.Steel chassis static oven paint
- 7.CE suitable for human health



Technical Feature

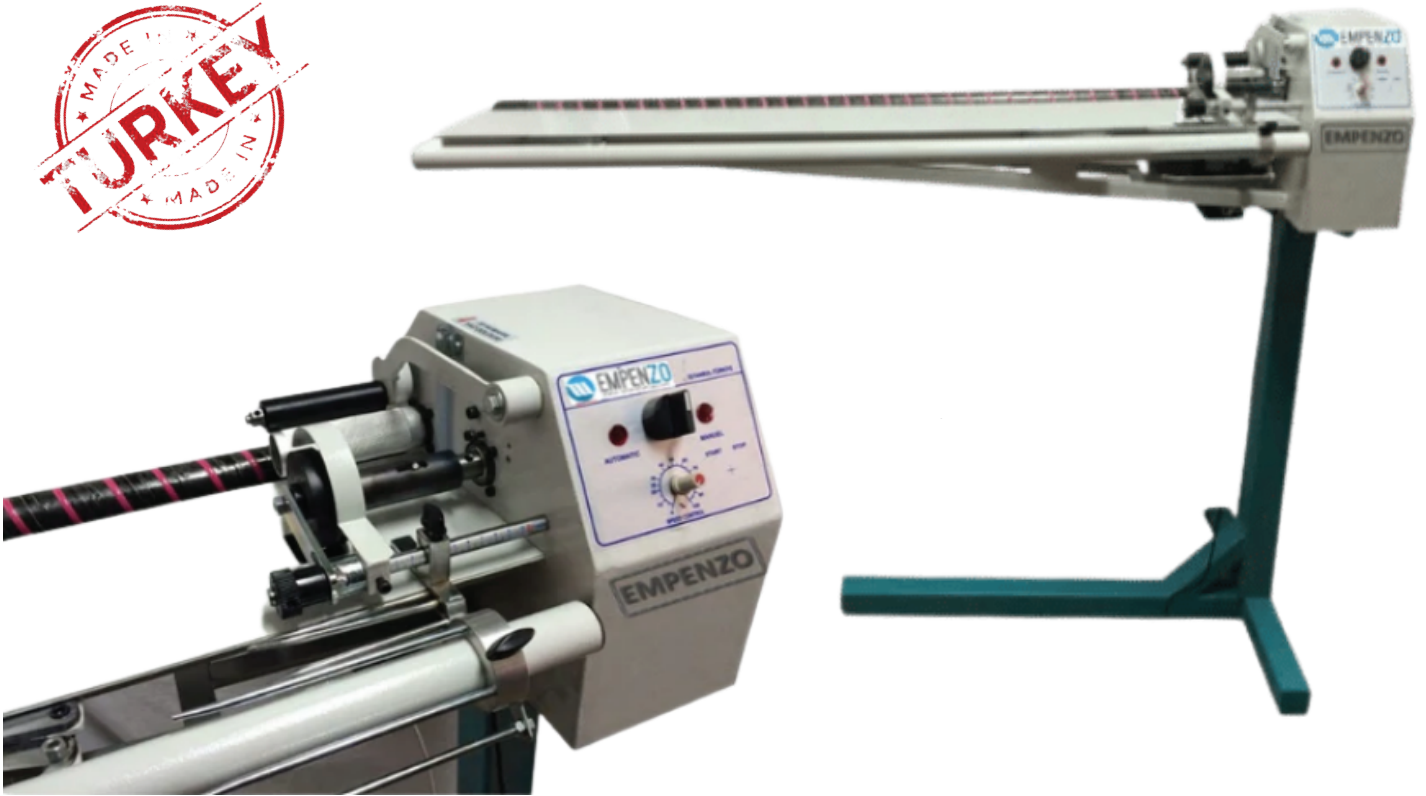
- 1.This machine marking without label.
- 2.Easy to use touch screen with automatic mood.
- 3.Program can be controlled from the display.
- 4.High efficiency and smooth performance.
- 5.No need extra maintance.
- 6.High printing quality.
- 7.Printing expanding with fabrics.

Benefits

- 1.Reducing time & increase the production.
- 2.Reducing extra manpower & machine.
- 3.No trimming and no helper required.
- 4.Suitable for underwear,socks,baby wears,pijamas, T-shirt & home textile etc.
- 5.High efficiency and smooth performance
- 6.High printing quality
- 7.No need extra maintance

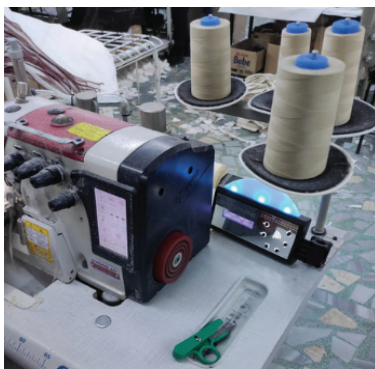
Technical Specifications

Model	EPZ-PPM-650-TR
Printing Block	100x225 mm
Ink Cup Diameter	90 mm
Optional Ink Diameter	60-130 mm
Printing Area	40-110 mm
Production Capacity	1800 unit/h



Technical Feature

- 1.Motor: 220W 0.18 1400D / min.
- 2.Cutting Width: 1cm to 10cm.
- 3.Automatic and manual usage is available.
- 4.Potential adjustable speed option.
- 5.It can work up to 24 hours with our special production knives.
- 6.Our machine cuts all kinds of fabrics..



Description

- Empenzo Universal Automatic Stacker Unit
- Counter system available for the counts the work-pieces
- Producing Made in Turkey
- Useful For any Kind of Sewing Machines



Your Reliable Solution
Partners

Technical Support

+880 177 121 7302



service@empenzo.com

Our Websites



www.empenzosewing.com



www.sewingspareparts.com

OUR AGENCY



Singapore Head Quarter
Address : 531 A Upper cross
street # 04-95
Hong Lim Complex
Singapore 051531
Telephone : +65 65 89 86 03
empenzosg@empenzo.com

Turkey Factory
Şeriafali Mahallesi Mevdudi
Sokak No.23
Ümraniye/Istanbul
Telephone :+90 216 420 04 58
+90 216 540 07 64
empenzotr@empenzo.com

Empenzo Bangladesh Liaison
Office Flat # A-1, House # 20
Road # 18, Sector # 3, Uttara
Dhaka-1230, Bangladesh
Telephone : +88 01771 217302
empenzobd@empenzo.com

Empenzo Americas Corp.
12 Daniel Road , Suite 319
Fairfield - New Jersey
07004 USA
Tel : +1 (973) 850-96 55
empenzousa@empenzo.com

www.empenzosewing.com

empenzo@empenzo.com