



EMPENZO[®]
INDUSTRIAL GARMENTS PTE. LTD.

SHIRTS AUTOMAT



YOUR RELIABLE PARTNERS

www.empenzosewing.com

SPECIFICATIONS

- Test from user panel
- Double label attaching
- Improved error sensor
- Vacuum injector
- Vacuum pool
- Easy to use programming panel
- 999 models can be storage
- The registered upper pressure system developed by uzay make



Technical Specifications

Machine	Empenzo
Stitch Form	Lockstitch
Maximum Speed	2500 Rpm
Working Space	220mm x 100 mm
Hook	Standard
Motor	Ac Servo Motor
Weight	Machine head is 64 Kg



KZ-750 ASM-TR EPAULETTE ATTACHING AND ACCESSORY STITCHING MACHINE

SPECIFICATIONS

3000 epaulette attaching each day

3000-4000 accessories stitching each day

Test from operational panel

Quality stitch without mistake

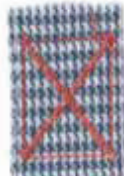
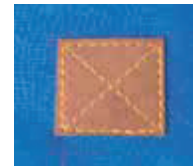
Perfect stitch because of xy motor system

Special design built-in table

Vacuum suction injector

Vacuum pool

This machine is equal to 4 workers



It is so easy to adjust this Empenzo epaulette and accessory attaching machine so for the epaulettes of the size between 1,5cm-2cm./ 2,5 cm - 3 cm. can be stitched with the adjustment of only one

Technical Specifications

Machine	Empenzo
Stitch Form	Lockstitch
Maximum Speed	3200 Rpm
Working Space	40mm x 30 mm
Hook	Standard
Motor	Ac Servo Motor
Weight	Machine Head is 64 Kg





Product Specifications

- Send Button Time :0.4 second
- Frequency:50-60 Hz
- 300mmX200mm
- Power :80W
- Button Type : Standar:2 holes and 4 holes
Option: 3 holes and 5 holes

Button Diameter:8-26 mm

- Button Thickness:1.8-5mm
- Supply Mode: Vibration plate
- Machine Head: Direct drive electronic
- Bartacking

1. Buckle detection: Button claw no buckle.
2. Adjustable vibration plates with different vibration frequency, button to button on the buckle claw machine.
3. Easy to change the button with four feet or two feet.
4. Automatic sending the button.
5. 7 inch color LCD touch screen
6. Fool automatically adjust button size
7. The average per minute to nail 20 to 30 buttons,

Every day 8 hours can pin about 15000 buttons

EPZ-1012 BS

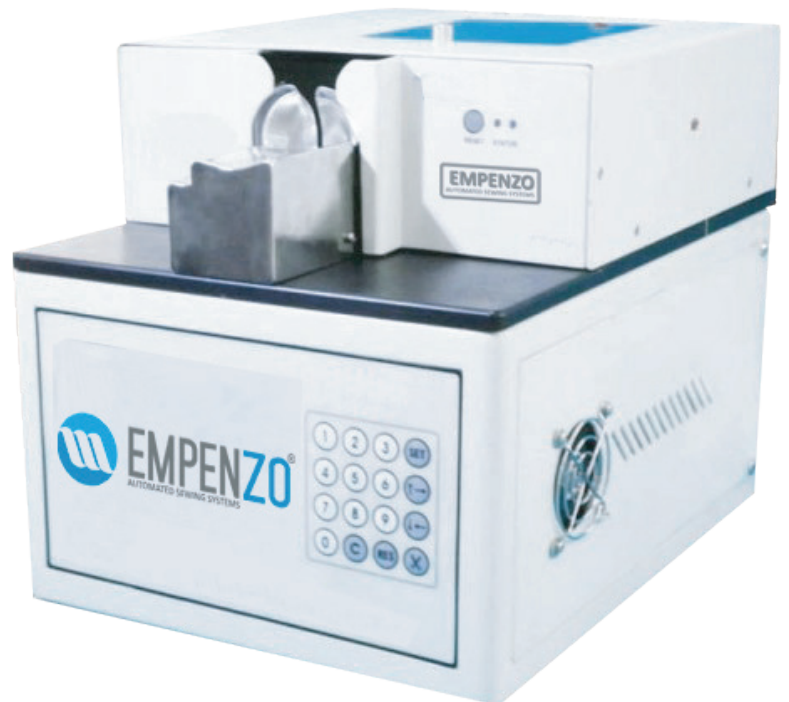
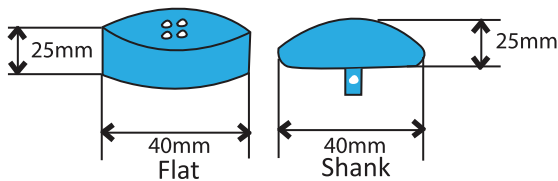
AUTOMATIC BUTTON SEWER WITH ROBOT

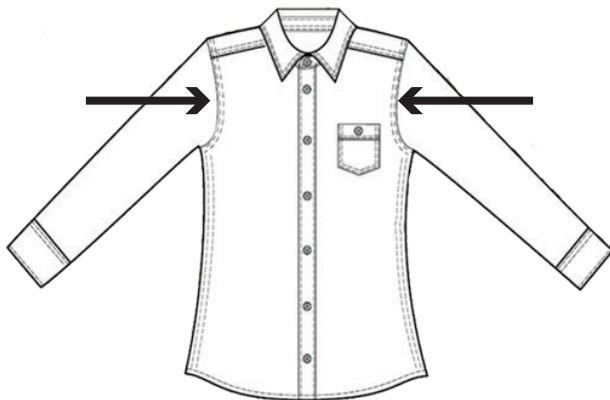
EPZ-1012 BS EMPENZO HEAD



EPZ-1201 WK

BUTTON WRAPPING & KNOTTING MACHINE



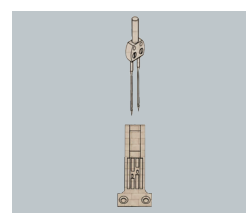
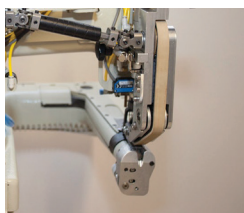


Technical Features

- Seiko full oil circulation, High speed,
- 2 needle feed of the arm machine
- Stitching length from 2,5 MM to 5 MM
- Moving puller system(Patented)
- High speed, Full oil circulation, Direct
- Eccentric drive, special transmission
- Automatic Foot Lift
- Needle Cooler
- L type adjustable table
- ZD 1001 thread cutting system(optional)

Technical Specifications

Motor	EFKA AB 321 SERVO Electronic Engine
Max Sewing Speed	5000 R.P.M



KZ-1040-GL
GAUGE SIZE
3/16



Highest Quality and Performance

EFKA : EXPERTISE in DRIVE TECHNOLOGY and AUTOMATION



AB221A



DC1500



V810



V820



V850



AB321A

ALL KINDS OF ORIGINAL SPARE PARTS FROM JAPAN AND ORIGINAL SOURCES



Visit our website



Download Catalogues



Watch video



Your Reliable Solution
Partners

Technical Support

+880 177 121 7302



service@empenzo.com

Our Websites



www.empenzosewing.com



sewingspareparts

www.sewingspareparts.com

OUR AGENCY



Singapore Head Quarter
Address : 531 A Upper cross
street # 04-95
Hong Lim Complex
Singapore 051531
Telephone : +65 65 89 86 03
emperzosg@empenzo.com

Turkey Factory
Şeriafali Mahallesi Mevdudi
Sokak No.23
Ümraniye/Istanbul
Telephone : +90 216 420 04 58
+90 216 540 07 64
empenzotr@empenzo.com

Empenzo Bangladesh Liaison
Office Flat # A-1, House # 20
Road # 18, Sector # 3, U ara
Dhaka-1230, Bangladesh
Telephone : +88 01771 217302
empenzobd@empenzo.com

Empenzo Americas Corp.
12 Daniel Road , Suite 319
Fairfield - New Jersey
07004 USA
Tel : +1 (973) 850-96 55
empenzousa@empenzo.com

www.empenzosewing.com

empenzo@empenzo.com