



FABRIC MACHINES



YOUR RELIABLE PARTNERS

www.empenzo.com



Ball Diameter: 50 cm

Ball Weight: 250 kg

Spreading Height: 25 cm

Spreading Width: 160-240 cm

Zigzag Spread Load. : 16 cm

Max. Spreading Speed: 105 mt / min

Machine Weight: 350 kg

Elk. Requirement: 220V 50Hz 3,5Kw

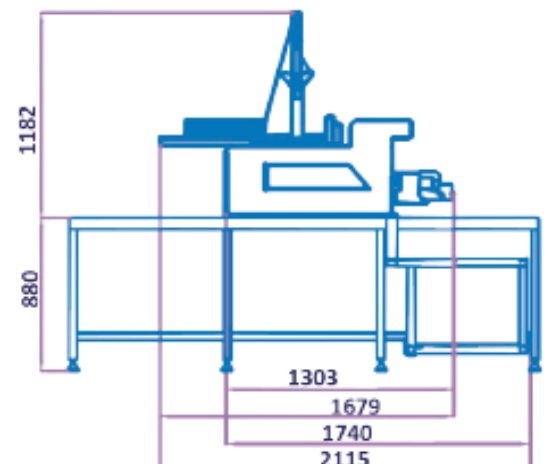
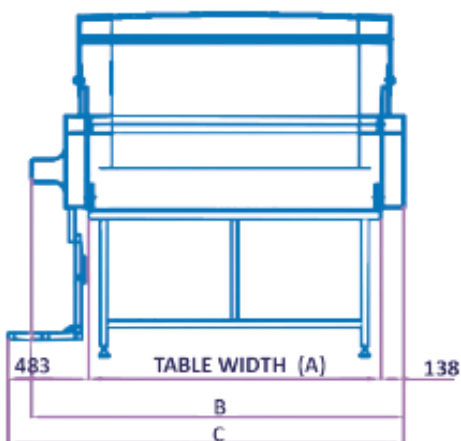
SYSTEM FEATURES

Thanks to the conveyor belt, Servo motor driven fabric feeding system,
To be able to spread the fabric at the desired tension on each part of the marker,
Back-lying basket system for fabric loading,
Automatic blood pressure control,
Easy to use touch control screen,
Programmable marker length and number of layers,
Precise length control with electronic measuring system,
Ability to rewind the fabric in one direction and zig-zag lay,
One-way fabric laying and cutting with the cutting apparatus,
Ability to cut fabric in the zigzag apparatus,
Zigzag fabric spreading using the zigzag apparatus,
Automatic marker height adjustment,
Electronic photocell side edge smoothness adjustment,
Safe operator platform,
Ergonomic robust chassis developed for heavy fabrics,
Ability to use more than one table with transfer table
2-year warranty against manufacturing defects.



■ Technical Specifications

Maximum spreading height with cutting device	250 mm
Maximum zigzag spreading height	220 mm
Maximum spreading height with tubular unit	200 mm
Maximum roll diameter	500 mm
Maximum roll weight	120 Kg
Maximum spreading speed (per minute)	80 m
Fabric width	1600 – 2400 mm
Table width	1820 – 2620 mm
Electrical power	2 kW/220 V/50 Hz



■ **SPREADS ALL KINDS OF FABRIC ROLLS WEIGHTING UP 120 KGS(264 LBS) WITHOUT TENSION AND EDGES ARE ALIGNED PERFECTLY**

- Spreads woven fabrics in roll or flat-folded form (Low Lycra)
- Spreads knit fabrics in roll or flat-folded form (Low Lycra)
- Spreads tubular knit fabric in roll or flat-folded form (Low Lycra)

■ **SYSTEM FEATURES**

- Electronic edge control responsive to variable speed
- Automatic stop with safety sensors in case of emergency
- Variable speed control at forward/backward turns «Save Time»
- Manual tension control system
- Easy usage with electronic clutch system
- Four-wheel drive with wheels

■ **ATTACHMENTS**

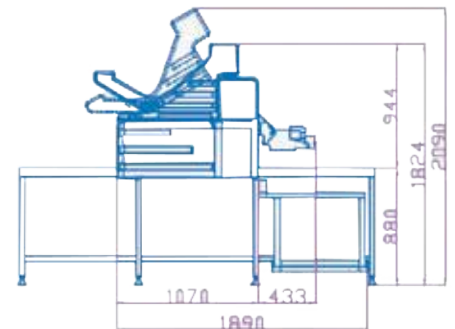
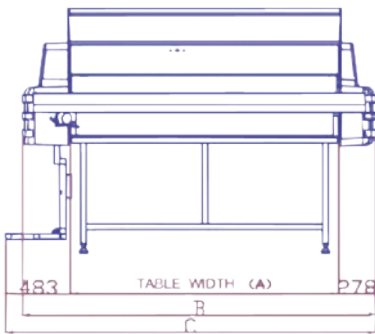
- Zigzag equipment
- Rear catcher
- Movable front catcher
- Flat-fold attachment
- Automatic cutting device
- Tubular unit



Automatic Cutting Device



Power System



Technical Specifications

Maximum spreading height with cutting device	250 mm
Maximum zigzag spreading height	220 mm
Maximum roll diameter	650 mm
Maximum roll weight	350 Kg
Maximum spreading speed (per minute)	100 m
Fabric width	1600 – 2000 mm
Table width	1800 – 2200 mm
Electrical power	5 kW/220 V/50 HZ



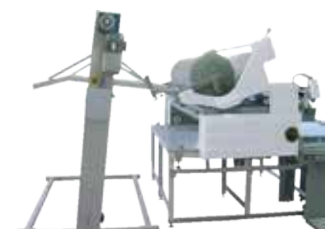
Automatic Cutting Device



Compact Design with back-tilted cradle feed



Zigzag Equipment



Fabric Loading Device

EPZ- 48 FSM

FULLY AUTOMATIC FABRIC SPREADING MACHINE

CRADLE FEED SYSTEM PROVIDES

- Tension-free spreading even difficult fabrics
- Electric cradle tilts for easy fabric roll loading/unloading
- Eliminates use of a fabric roll bar

SYSTEM FEATURES

- Electronic edge control responsive to variable speed
- Automatic stop with safety sensors in case of emergency
- Multi length spreading modes
- Automatic pre-centering of material beginning during threading
- Variable speed control at forward/backward turns «Save Time»
- No cloth stop function
- Ply counter
- Programmable lay length and end allowance settings
- Four-wheel drive with wheels

LCD TOUCH SCREEN DISPLAY WITH PLC UNIT

- Simplified graphical display that is easy to learn and easy to train new operators
- Stores 50 different fabric set up files for quick retrieval to accelerate future spreading jobs
- Available in Turkish, English and any other foreign languages if requested

SPREADS ALL KINDS OF FABRIC ROLLS WEIGHTING UP 350 KGS (771LBS) WITHOUT TENSION AND EDGES ARE ALIGNED PERFECTLY

- Garment Industry (Denim fabrics)
- Home Textile
- Upholstery Industry

OPERATOR PLATFORM

Allows operator to ride alongside the table

ATTACHMENTS

- Zigzag equipment
- Rear catcher
- Movable front catcher
- Flat-fold attachment
- Automatic cutting device
- ML1 Master Lift

MULTI FUNCTION THROTTLE ENABLES THE OPERATOR TO CONTROL

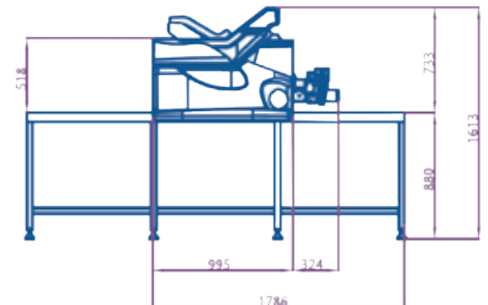
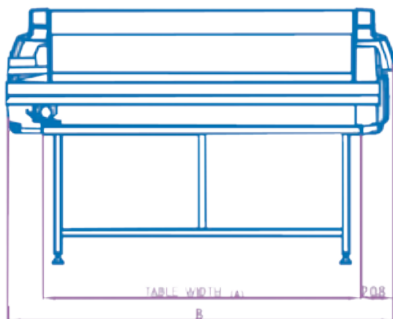
- Threading/Rewinding of fabric
- Start/Stop of spreading with one hand



Automatic Cutting Device



Power System



■ Technical Specifications

Maximum spreading height with cutting device	250 mm
Maximum zigzag spreading height	220 mm
Maximum spreading height with tubular unit	200 mm
Maximum roll diameter	450 mm
Maximum roll weight	120 Kg
Maximum spreading speed (per minute)	100 m
Fabric width	1600 – 2500 mm
Table width	1820 – 2720 mm
Electrical power	1,4 kW/220 V/50 Hz

SYSTEM FEATURES

- Electronic edge control responsive to variable speed
- Multi length spreading modes
- Automatic pre-centering of material beginning during threading
- No cloth stop function
- Ply counter
- Programmable lay length and end allowance settings

ATTACHMENTS

- Zigzag equipment
- Rear catcher
- Movable front catcher
- Flat-fold attachment
- Automatic cutting device
- Tubular unit

SPREADS ALL KINDS OF FABRIC ROLLS WEIGHTING UP 120 KGS(264 LBS) WITHOUT TENSION AND EDGES ARE ALIGNED PERFECTLY

- Spreads woven fabrics in roll or flat-folded form (Full Lycra)
- Spreads knit fabrics in roll or flat-folded form (Full Lycra)
- Spreads tubular knit fabric in roll or flat-folded form (Full Lycra)

MULTI FUNCTION THROTTLE ENABLES THE OPERATOR TO CONTROL

- Threading/Rewinding of fabric
- Start/Stop of spreading with one hand

LCD TOUCH SCREEN DISPLAY WITH PLC UNIT

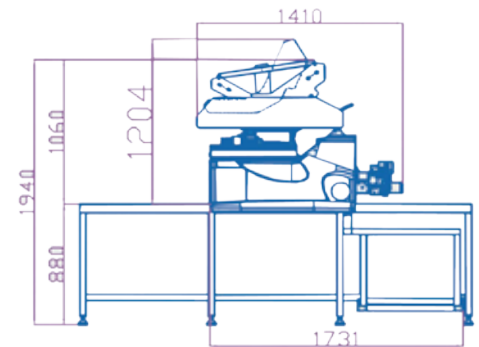
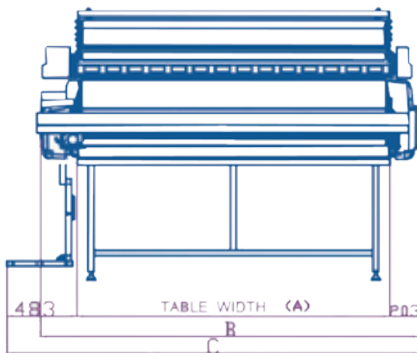
- Simplified graphical display that is easy to learn and easy to train new operators
- Stores 50 different fabric set up files for quick retrieval to accelerate future spreading jobs



Spreading Device



Power System



■ Technical Specifications

Maximum spreading height with cutting device	250 mm
Maximum zigzag spreading height	220 mm
Maximum roll diameter	450 mm
Maximum roll weight	120 Kg
Maximum spreading speed (per minute)	100 m
Fabric width	1600 – 2400 mm
Table width	1820 – 2220 mm
Electrical power	5 kW/220 V/50 Hz

SYSTEM FEATURES

- Electronic edge control responsive to variable speed
- Automatic stop with safety sensors in case of emergency
- Automatic pre-centering of material beginning during threading
- Variable speed control at forward/backward turns «Save Time»
- No cloth stop function
- Ply counter
- Programmable lay length and end allowance settings
- Four-wheel drive with wheels
- Turntable provides automatic rewinding, threading and positioning of material

CRADLE FEED SYSTEM PROVIDES

- Tension-free spreading even difficult fabrics
- Electric cradle tilts for easy fabric roll loading/unloading
- Eliminates use of a fabric roll bar

MULTI FUNCTION THROTTLE ENABLES THE OPERATOR TO CONTROL

- Threading/Rewinding of fabric
- Start/Stop of spreading with one hand

CERTAIN SPREADS MODES SUPPORTED WEIGHTING UP 120 KGS (264LBS) WITH TURNTABLE IT CAN BE USED FOR LIGHT FABRIC

- Simplified graphical display that is easy to learn and easy to train new operators
- Stores 50 different fabric set up files for quick retrieval to accelerate future spreading jobs
- Available in Turkish, English and any other foreign languages if requested

ATTACHMENTS

- Zigzag equipment
- Rear catcher
- Movable front catcher
- Flat-fold attachment
- Automatic cutting device
- Tubular unit

OPERATOR PLATFORM

- Allows operator to ride alongside the table

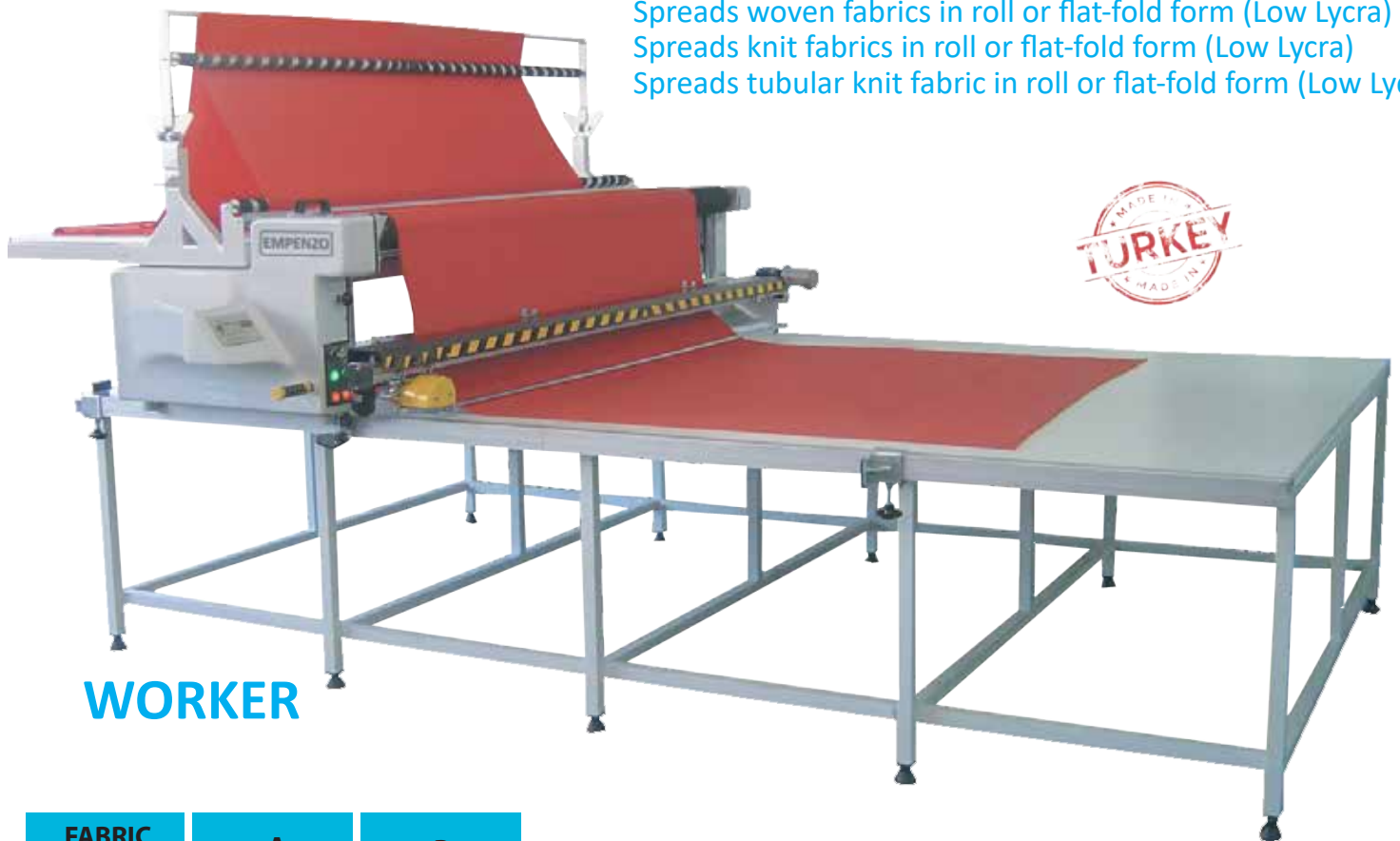


Turn Table



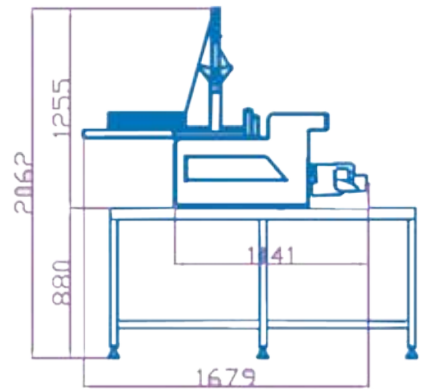
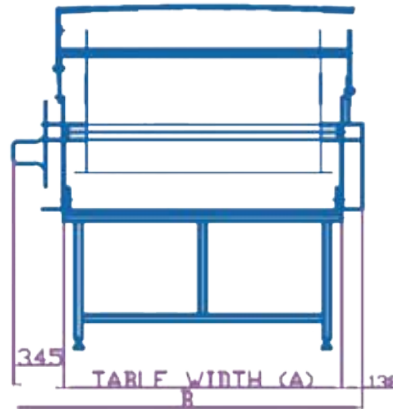
Zigzag Equipment

Spreads woven fabrics in roll or flat-fold form (Low Lycra)
 Spreads knit fabrics in roll or flat-fold form (Low Lycra)
 Spreads tubular knit fabric in roll or flat-fold form (Low Lycra)



WORKER

FABRIC WIDTH	A	B
1600	1820	2303
1700	1920	2403
1800	2020	2503
1900	2120	2603
2000	2220	2703
2100	2320	2803
2200	2420	2903
2300	2520	3003
2400	2620	3103

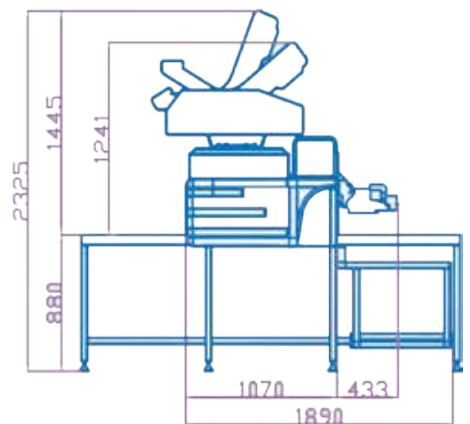
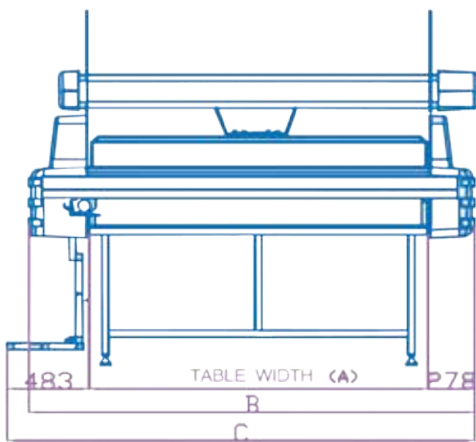


Technical Specifications

Maximum spreading height with cutting device	250 mm
Maximum zigzag spreading height	220 mm
Maximum spreading height with tubular unit	200 mm
Maximum roll diameter	500 mm
Maximum roll weight	120 Kg
Maximum spreading speed (per minute)	80 m
Fabric width	1600 – 2400 mm
Table width	1820 – 2620 mm
Electrical power	1 kW/220 V/50 Hz



MASTER TURN TABLE



Technical Specifications

Maximum spreading height with cutting device	250 mm
Maximum zigzag spreading height	220 mm
Maximum roll diameter	650 mm
Maximum roll weight	250 Kg
Maximum spreading speed (per minute)	100 m
Fabric width	1600 – 2400 mm
Table width	1820 – 2620 mm
Electrical power	1 kW/220 V/50 Hz

SYSTEM FEATURES

- Electronic edge control responsive to variable speed
- Automatic stop with safety sensors in case of emergency
- Automatic pre-centering of material beginning during threading
- Variable speed control at forward/backward turns «Save Time»
- No cloth stop function
- Programmable lay length and end allowance settings
- Turntable provides automatic rewinding, threading and positioning of material

CRADLE FEED SYSTEM PROVIDES

- Tension-free spreading even difficult fabrics
- Electric cradle tilts for easy fabric roll loading/unloading
- Eliminates use of a fabric roll bar

LCD TOUCH SCREEN DISPLAY WITH PLC UNIT

- Simplified graphical display that is easy to learn and easy to train new operators
- Stores 50 different fabric set up files for quick retrieval to accelerate future spreading jobs
- Available in Turkish, English and any other foreign languages if requested

CERTAIN SPREADS MODES SUPPORTED WEIGHTING UP 250 KGS (551LBS) WITH TURNTABLE - WITH ROBUST CONSTRUCTION, IT CAN BE USED FOR HEAVY FABRICS AS IF Epz MASTER JEANS

- With robust construction, it can be used for heavy fabric as if Epz Master Jean

ATTACHMENTS

- Zigzag equipment
- Rear catcher
- Movable front catcher
- Flat-fold attachment
- Automatic cutting device
- Tubular unit

SPREADING MODES

- Face up or face down
- Face to face with or without end catchers
- Face to face one way
- Multi length spreading

MULTI FUNCTION THROTTLE ENABLES THE OPERATOR TO CONTROL

- Threading/Rewinding of fabric
- Start/Stop of spreading with one hand



Cradle Feed System Provides
Tension-Free Spreading



Fabric Lifting Device



Power System

System Features

- Variable speed control at forward/backward turns
- Four-wheel drive with wheels
- Automatic tension control system
- Automatic stop with safety sensors in case of emergency
- Automatic roll lift system while spreading
- Quick spreading with one operator
- Spreading with special balance wheels within the range of 30 to 125cm
- One operator which saves labor enhances work efficiency
- Fabric inspection illumination

Technical Specifications

Spreading height	280 mm
Maximum roll diameter	500 mm
Maximum roll weight	80 Kg
Maximum spreading speed (per minute)	80 m
Maximum Fabric width	1250 mm
Table width	1650 mm
Electrical power	2 kW/220 V/50 Hz

Specially designed for rewieving, rewinding and length measurement of rich Lycra blended woven fabrics including with flat-fold & tension control unit



Technical Specifications

Maximum speed (per minute)	0-60 mm
Fabric width	1800 mm
Maximum roll diameter	450 mm
Maximum roll weight	150 Kg
Overall machine height	2200 mm
Overall machine weight	1200 Kg
AC / Motor drivers	4 pcs
Electrical power	4 kW/380V/50 Hz

Optionally



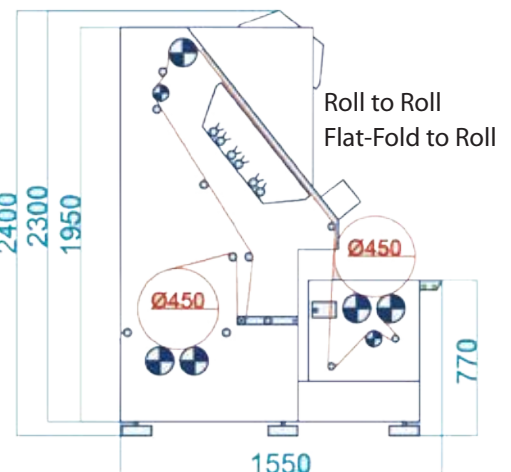
Control Panel



Sample Sticker Report



Weighting Device



Option 1: computerized, integrated data collection system for registration of type and position of fabric faults noticed during fabric inspection process, allowing to create and print stickers with reports containing error list and error statistics

Option 2: fabric weighting system in connection with fabric length measurement system allows to register real weight (gramature) of inspected fabric.

Option 3: attachment for unwinding of fabric winding tambour



Designed for rewinding, rewinding and length measurement of heavy duty woven fabrics with roll to roll & flat-fold to roll operating modes



Technical Specifications

Maximum speed (per minute)	0-60 mm
Fabric width	1800 mm
Maximum roll diameter	700 mm
Maximum roll weight	400 Kg
Overall machine height	2200 mm
Overall machine weight	1300 Kg
AC / Motor drivers	4 pcs
Electrical power	4 kW/380V/50 Hz

Optionally



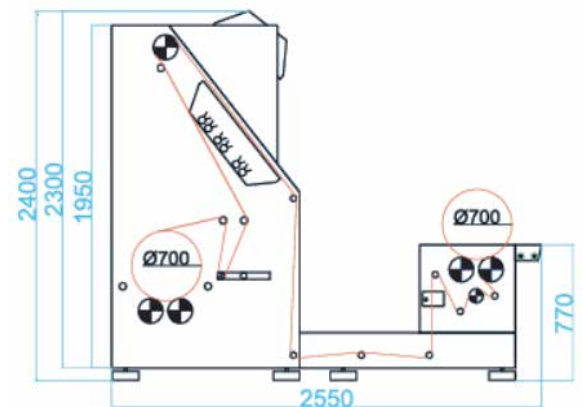
Control Panel



Sample Sticker Report



Weighting Device



Option 1: computerized, integrated data collection system for registration of type and position of fabric faults noticed during fabric inspection process, allowing to create and print stickers with reports containing error list and error statistics

Option 2: fabric weighting system in connection with fabric length measurement system allows to register real weight (grammature) of inspected fabric

Designed for rewieving, rewinding and length measurement of woven and low Lycra blended fabrics with roll to roll & flat-fold to roll operating modes.



Technical Specifications

Maximum speed (per minute)	0-60 mm
Fabric width	1800 mm
Maximum roll diameter	450 mm
Maximum roll weight	150 Kg
Overall machine height	2200 mm
Overall machine weight	900 Kg
AC / Motor drivers	3pcs
Electrical power	3kW/380V/50 Hz

Optionally



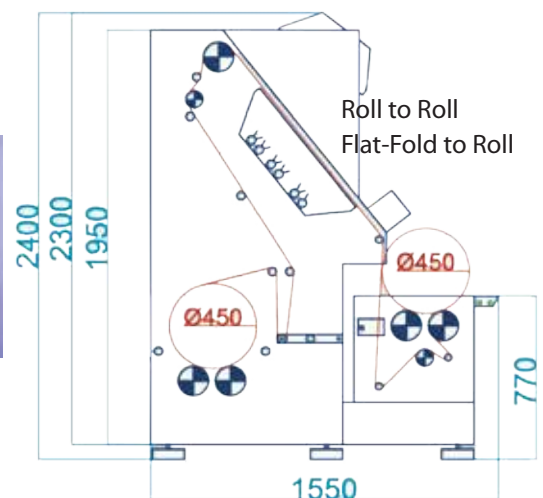
Control Panel



Sample Sticker Report



Weighting Device



Option 1: computerized, integrated data collection system for registration of type and position of fabric faults noticed during fabric inspection process, allowing to create and print stickers with reports containing error list and error statistics

Option 2: fabric weighting system in connection with fabric length measurement system allows to register real weight (gramature) of inspected fabric



Technical Specifications

Maximum speed (per minute)	0-60 mm
Fabric width	2000-2200-2400 mm
Maximum roll diameter	450 mm
Maximum roll weight	150 Kg
Overall machine height	2200 mm
Overall machine weight	1100 Kg
AC / Motor drivers	4 pcs
Electrical power	4 kW/380V/50 Hz

Optionally



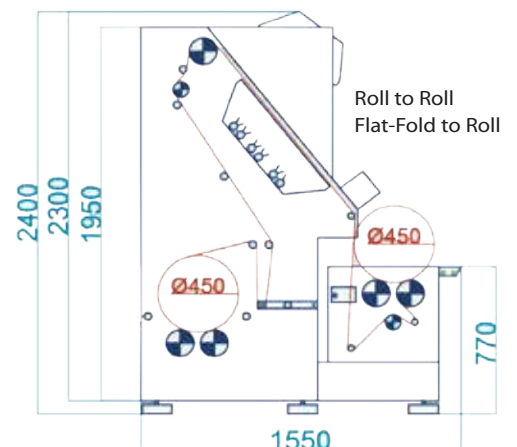
Control Panel



Sample Sticker Report



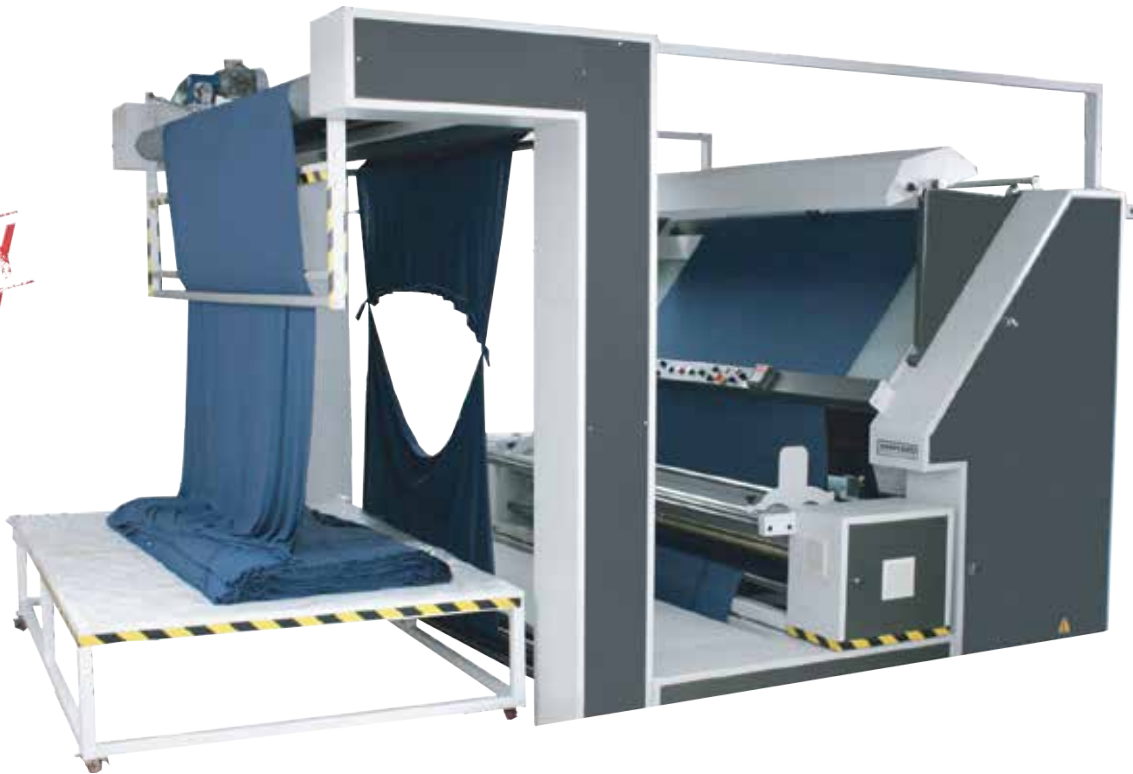
Weighting Device



Option 1: Computerized, integrated data collection system for registration of type and position of fabric faults noticed during fabric inspection process, allowing to create and print stickers with reports containing error list and error statistics

Option 2: Fabric weighting system in connection with fabric length measurement system allows to register real weight (grammature) of inspected fabric

Option 3: Optionally available with UV lighting from the top



Technical Specifications

Maximum speed (per minute)	00-60 mm
Fabric width	2000-2200-2400 mm
Maximum roll diameter	450 mm
Maximum roll weight	150 Kg
Overall machine height	2250 mm
Overall machine weight	1600 Kg
AC / Motor drivers	5 pcs
Electrical power	6 kW/380V/50 Hz

Optionally



Control Panel



Sample Sticker Report



Weighting Device



Air Blowing System

Option 1: Computerized, integrated data collection system for registration of type and position of fabric faults noticed during fabric inspection process, allowing to create and print stickers with reports containing error list and error statistics

Option 2: Fabric weighting system in connection with fabric length measurement system allows to register real weight (grammature) of inspected fabric

Option 3: Blowing system for eliminating of fabric edge curls

Option 4: Available for Wider Widths ranging from 260-320 cm for Woven Fabrics (Home Textile)



MASTER LABEL



Industrial PC



Label Placement

WORKING MODE

- Fully Automatic Mode
- Bite by Bite Mode



FULLY AUTOMATIC LABELLING MACHINE

The Labeler prints out and places a sticking label on each pattern of the marker on the upper ply of the. Lay directly on the fabric. The label contains the required information to make each piece easily identified after cutting for proper bundling. It is not longer needed to print out the marker with plotters, to place it on top of the fabric and cut it with CNC Cutters. Master Label runs on the top of the spreading table on special metallic side rails in order to work fully independently on the lay after spreading on before cutting, without affecting the total working process time .The labels are placed directly on the fabric and not on the plastic seal. They will not be able to move after cutting due to thermoheat printed sticky labels, even the smallest ones and will be perfectly recognizable. It is interfaced with CAD system to collect all required marker data .Laser point is available to set the starting point .The machine is equipped with encoder along with Servo Motor to guarantee highest possible precision and accuracy.



Designed for reviewing, rewinding and length measurement of all kinds of knitted fabrics (dyed or grey). Perfect rolling without tension and air blowing system for eliminating of fabric edge curls.



Technical Specifications

Maximum speed (per minute)	0-60 mm
Fabric width	2000-22000-2400 mm
Maximum roll diameter	450 mm
Maximum roll weight	150 Kg
Overall machine height	2200 mm
Overall machine weight	1200 Kg
AC / Motor drivers	4 pcs
Electrical power	4 kW/380V/50 HZ

Optionally



Control Panel



Sample Sticker Report



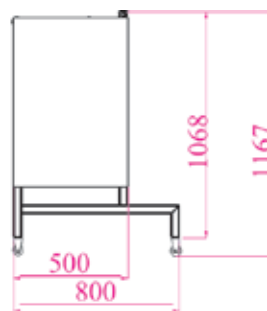
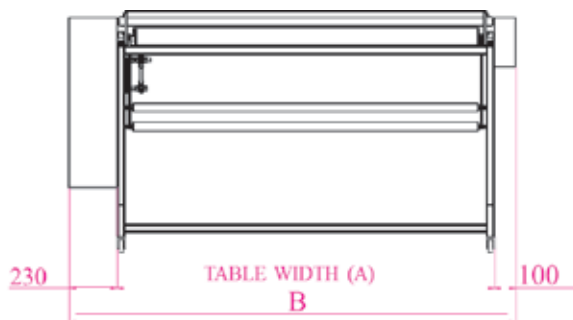
Weighting Device



Air Blowing System

Option 1: Computerized, integrated data collection system for registration of type and position of fabric faults noticed during fabric inspection process, allowing to create and print stickers with reports containing error list and error statistics

Option 2: Fabric weighting system in connection with fabric length measurement system allows to register real weight (gramature) of inspected fabric



FABRIC WIDTH	A	B
1600	1820	2150
1700	1920	2250
1800	2020	2350
1900	2120	2450
2000	2220	2550
2200	2320	2650
2400	2420	2750

Technical Features

Bring roll material to flat-fold form while relaxing.
 Flat-folded material could be returned back to roll form upon request (without edge control).
 Speed of roller and rocker could be adjustable through control box.
 With movable wheels for easy mobility.



Technical Specifications

Maximum Speed (Per Minute)	0-60 mm
Maximum Roll Diameter	450 mm
Maximum Roll Weight	150 Kg
Overall Machine Weight	2250 mm
AC Motor Drivers	4 pcs
Electrical Power	4 kW/380 V/50 Hz

Industries: Fashion & Apparel,
Transportation, Furniture, Technical Textile



BRISTLE AND KNIFE RE-SHARPENING

Long lasting bristle allows knife to penetrate without damage
Automatic knife re-sharpening eliminate hanging threads ensuring quality cut parts from top to bottom ply

AUTOMATIC KNIFE OIL LUBRICATION KEYPAD

User friendly keypad controls many functions at the cutter
Software screens and operating manuals available in English

BUILDING AREA

Sorting conveyor with clearing zone, approx..1625mm length

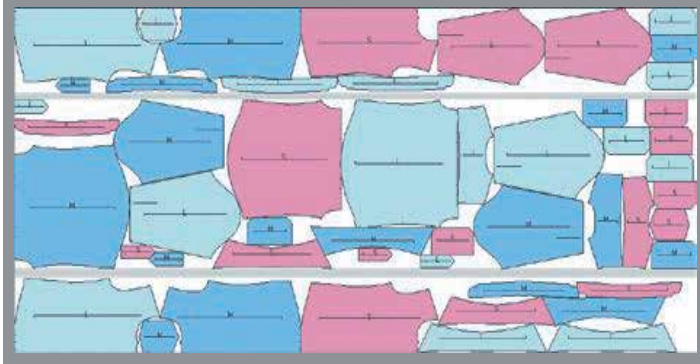
Technical Parameters

	30 mm	50 mm	70 mm
Cutting Height	30 mm	50 mm	70 mm
Cutting Speed	80 m/min	80 m/min	80 m/min
Vacuum Power	12 kW	12 kW	15 kW
Installed Power	15 kW	15 kW	17 kW
Noise	<80 dBA	<80 dBA	<80 dBA
Fabric Cutting Width(A)	1600-2800	1600-2800	1600-2800
Cutting Window(D)	1800	1800	1800

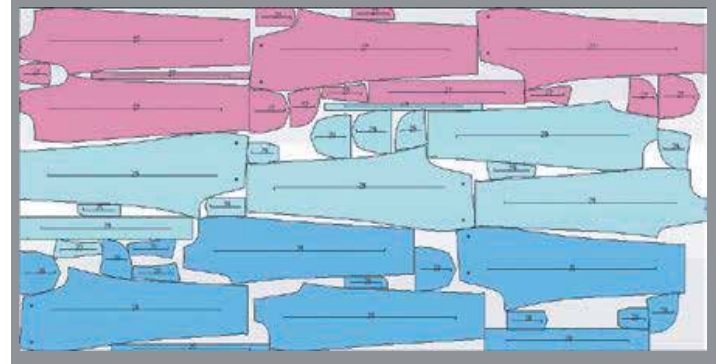
Empenzo Marker is designed to maximize your productivity, minimize your labor cost and fabric consumption, and optimize your fabric orders.

Empenzo AutoMarker generates optimal markers in minutes or even seconds - while giving you the greatest flexibility to deal with complex fabric, cutting, and production considerations, such as fabric defects, fabric color variations, fabric prints, stepped fabric lays, block fusing, and more.

Empenzo AutoMarker will even determine the optimal fabric width for a specific order.



Handle fabric defects with flexibility



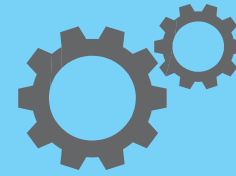
Efficiently manage fabrics with color discrepancies



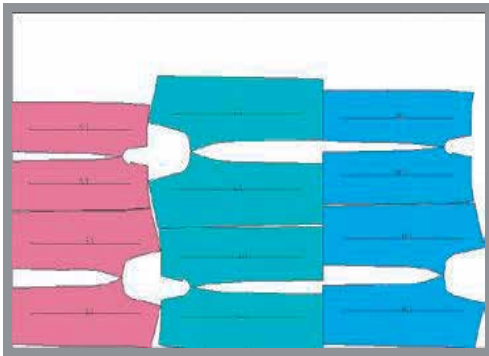
70% less human effort



8% less fabric



100% automation



Place some pieces by hand, fill in the rest automatically

Automatik. Pastal Optimizasyon Sonuçları

En	Boy	%Verimlilik	Pastal Dosyası İsmi
146.00	241.09	79.24	w/15-1562-009-146.MRK
148.00	240.90	78.23	w/15-1562-009-148.MRK
152.00	240.40	77.35	w/15-1562-009-150.MRK
150.00	239.20	76.71	w/15-1562-009-152.MRK
154.00	238.45	75.96	w/15-1562-009-154.MRK

Seçilen Pastal Kullan Bitir Seçilen Pastal Aç

İdeal Kumaş Enine Göre Otomatik. Pastal Ayarları

Pastal En. Aralıklarını Tanımlayınız

Minimum Kumaş Eni: 146.0 Cm.

Maksimum Kumaş Eni: 154.0 Cm.

Aray Aralığı: 2.0 Cm.

Alternatif Kumaş Enine Göre Otomatik Pastal Çıkışı Satırını Bölümlen

Sadece Pastal Dosyası Oluştur

Pastal Dosyası Oluştur, Otomatik Pastal Kumaş Listesine Ekle

Pastal Dosyası Oluştur, Otomatik Pastal Kumaş Listesine Ekle ve Çıkış

Kumaş Maliyeti Hesaplamaya Yönelik:

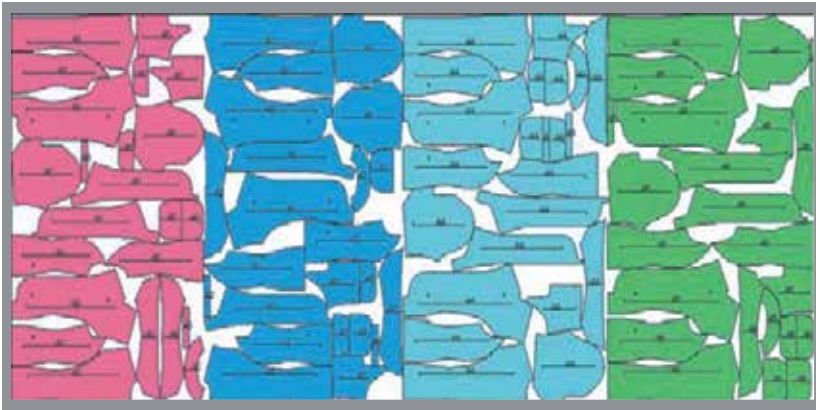
Boy

Alınır

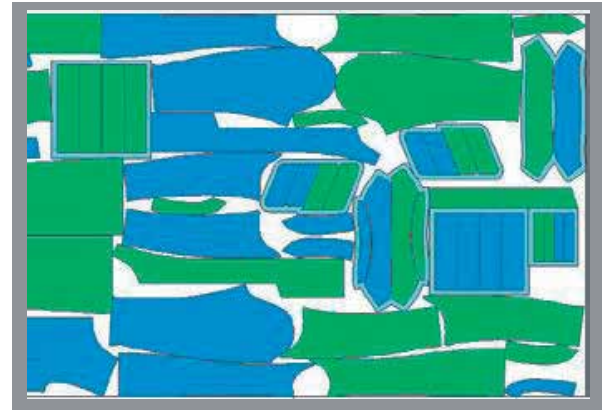
Vazgeç Tamam

Serkon finds the optimal fabric width

www.empenzosewing.com



Get tight markers, even for stepped fabric lays



Use fusing blocks in AutoMarker

Maximum productivity in marker making: Handle more production conditions automatically

24/7 operation:

Leave jobs for overnight execution

Optimized piece placement

Optimal fabric orders:

Order the right amount of fabric, in quantity and in width

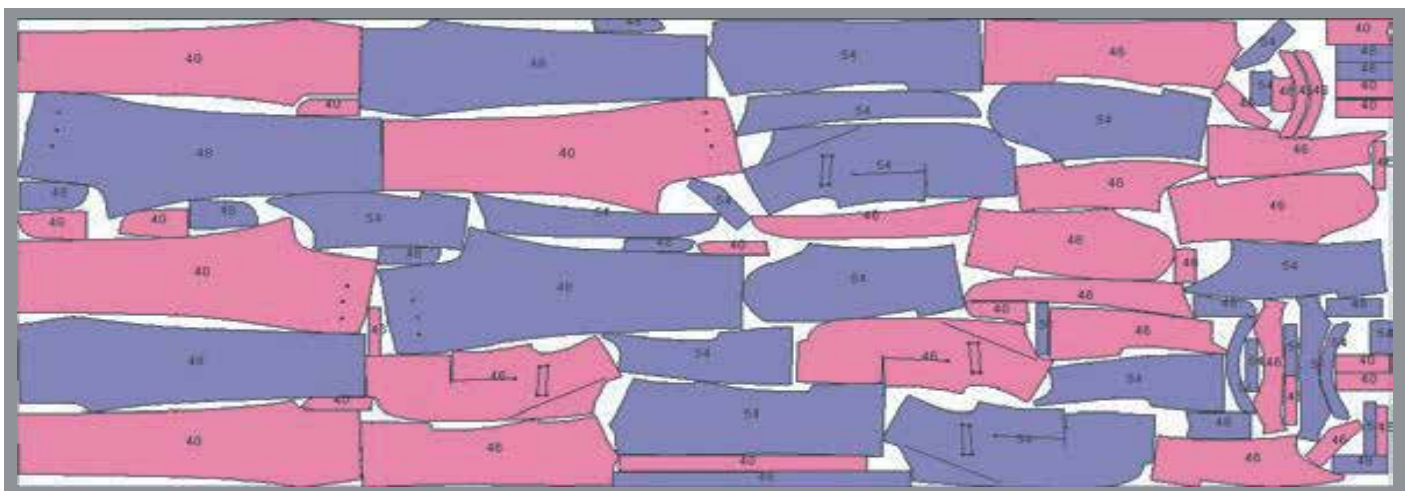
Reduced production mistakes:

Use Empenzo's customizable warning system

Reliable data exchange with partners:

Interface with other CAD systems, applications, and a wide range of machines

Empenzo customers have enjoyed higher productivity



Treat separate garments as a set

Empenzo Design Pro.

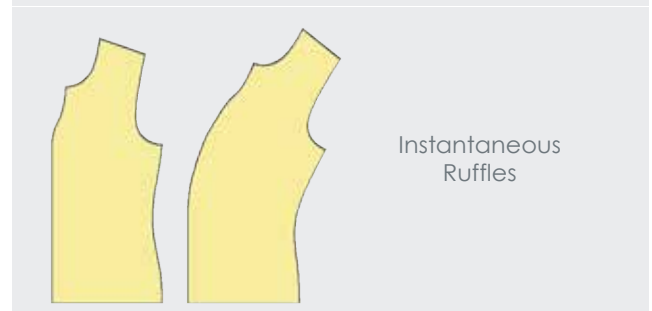
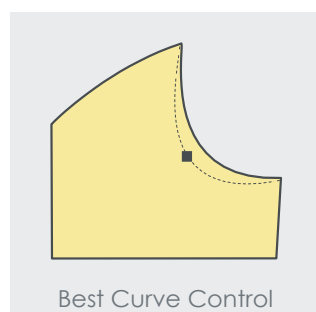
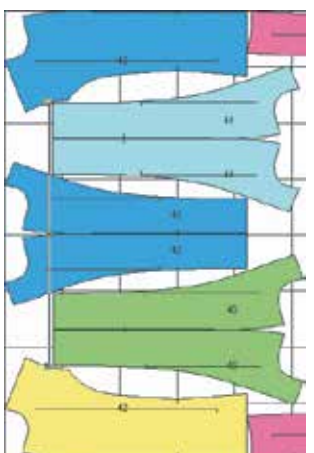
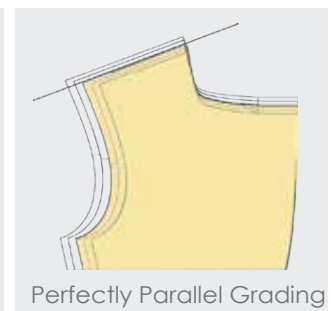
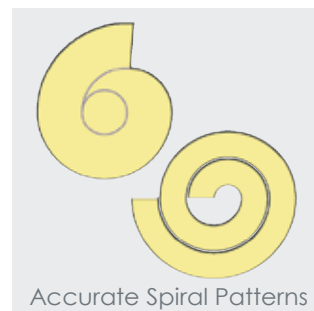
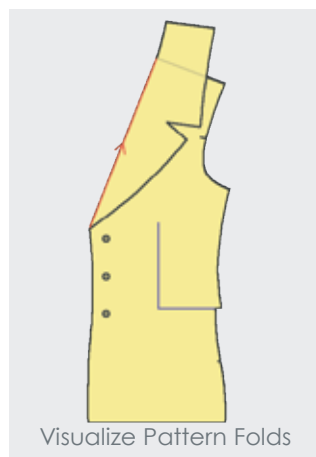
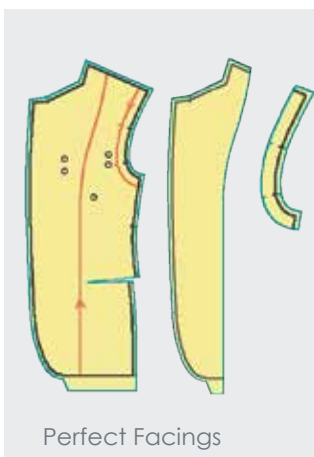
True efficiency in pattern making and product development is achieved when

- 1) Pattern construction and revisions are accomplished quickly and
- 2) Pattern data is ready for production when product samples are approved

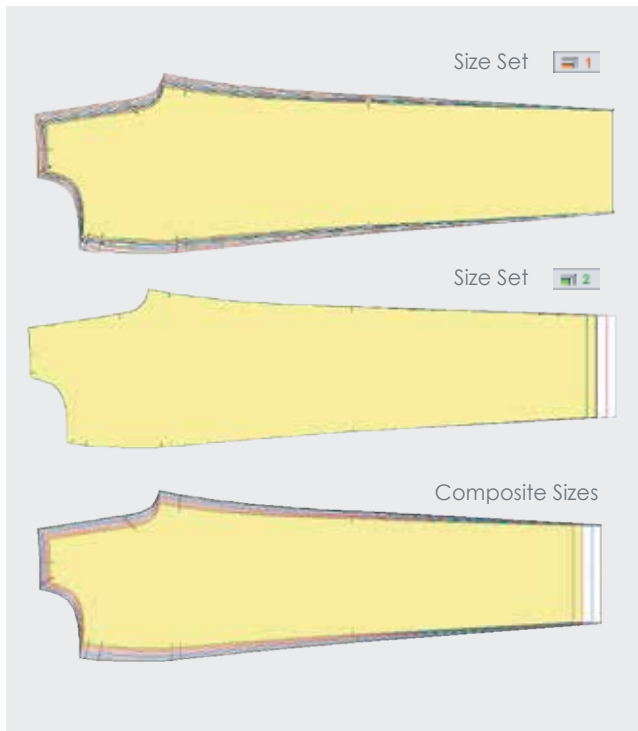
The only effective way to optimize the pattern making process is to develop patterns directly in your CAD System

95% of Empenzo users NEVER make patterns by hand.

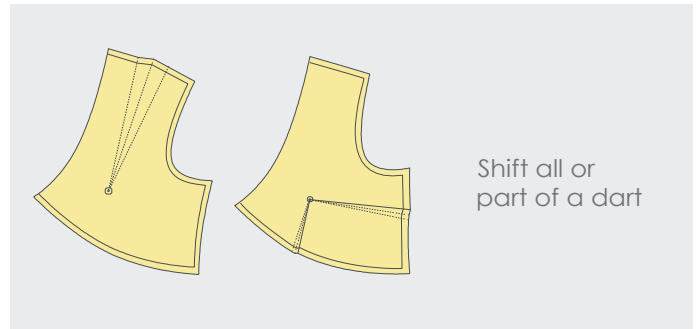
Empenzo's thoughtfully designed tools, combined with its unique "snaps" and keyboard input, enable you to make correct patterns with the greatest speed, accuracy, control, and unbelievable ease. The result is a simple clean working environment with features you can Access. You'll use all of empenzo's features to efficiently develop and revise patterns, because you'll know how to.



Empenzo customers have enjoyed higher productivity.



Easily manage drop sizes



Maximum productivity in pattern making:

do more things in fewer steps

Optimized sample room processes:

graded patterns are ready for production when samples are approved.

Accurate fabric costing and fabric orders:

costing markers are built on actual pattern data.

Reliable pattern data exchange with partners:

direct interface with other CAD systems, applications, and a wide range of machines

	XS	S	M	L	XL	XXL
BACK						
Chest	20.00	21.00	22.00	23.00	24.00	25.00
Shoulder	9.98	10.49	11.00	11.51	12.02	12.53
Neck Opening	7.18	7.34	7.50	7.66	7.82	7.98
Waist	18.00	19.00	20.00	21.00	22.00	23.00
Armhole	16.49	17.00	17.51	18.02	18.53	19.05
Hip	19.25	20.25	21.25	22.25	23.25	24.25
Neck Drop	2.50	2.50	2.50	2.50	2.50	2.50
Length	59.00	59.50	61.50	62.00	63.50	64.00
SLEEVE						
Bice	14.50	15.25	16.00	16.75	17.50	18.25
Sleeve Opening	11.50	12.00	12.50	13.00	13.50	14.00
Length	30.00	30.00	30.00	30.00	30.00	30.00
FRONT						
Chest	20.00	21.00	22.00	23.00	24.00	25.00
Shoulder	9.98	10.49	11.00	11.51	12.02	12.53
Neck Opening	7.18	7.34	7.50	7.66	7.82	7.98
Waist	18.00	19.00	20.00	21.00	22.00	23.00
Armhole	16.49	17.00	17.51	18.02	18.53	19.05
Hip	19.25	20.25	21.25	22.25	23.25	24.25
Neck Drop	8.50	9.00	9.50	10.00	10.50	11.00
Length	59.00	59.50	61.50	62.00	63.50	64.00

Create a pattern dimension table



- **Designed for easy operation**
- **Built to run 24h / 7 days**
- **A noiseless “miracle”**
- **Made in Western Europe (EU)**
- **Superior price/performance**

• **Empenzo DOT Series**

The Empenzo DOT Plotter series includes the ultimate in inkjet technology electronics, software control and cutting-edge long-lasting distinguished European design.

• **Easy and Quick**

Rapid paper roll exchange system. Specifically designed for the present day marker-to-cut manufacturing environment. Fast, inexpensive to maintain quick service.

• **Paper Output**

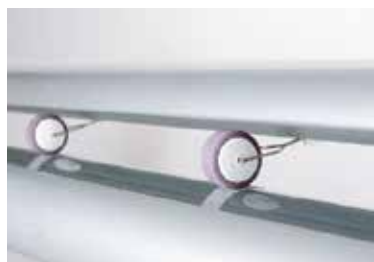
Ultra light aluminum shaft (up to 200mm diameter) or free-paper-on-front delivery.

• **OptInk**

Reduced ink consumption compared with conventional systems, allows inkjet head cleaning and parking using appropriate software. Ink level control. Easy access to change cartridge.

• **The environment**

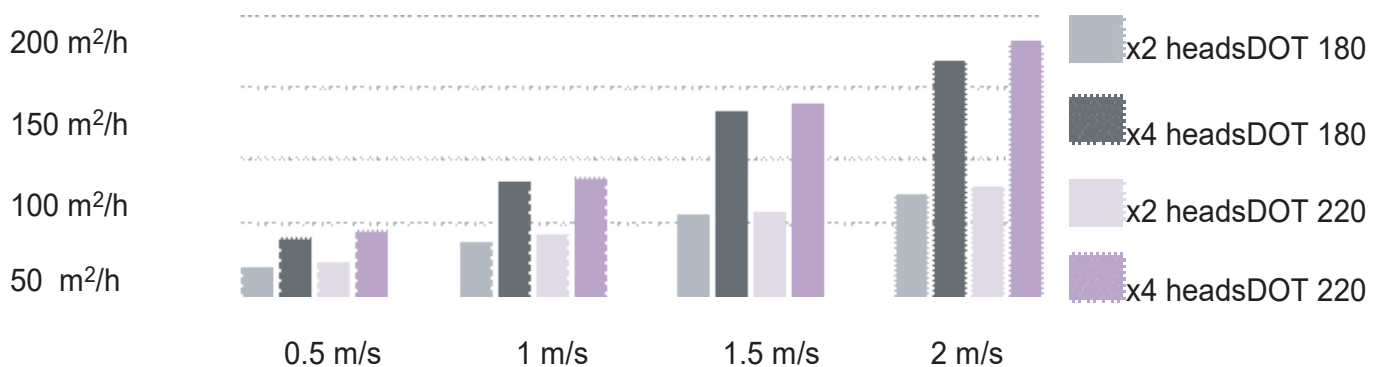
Materials used for manufacturing are high quality and eco-friendly allowing an almost 100% recycling at the end of their life-cycle, and are deliberately coded for this purpose.

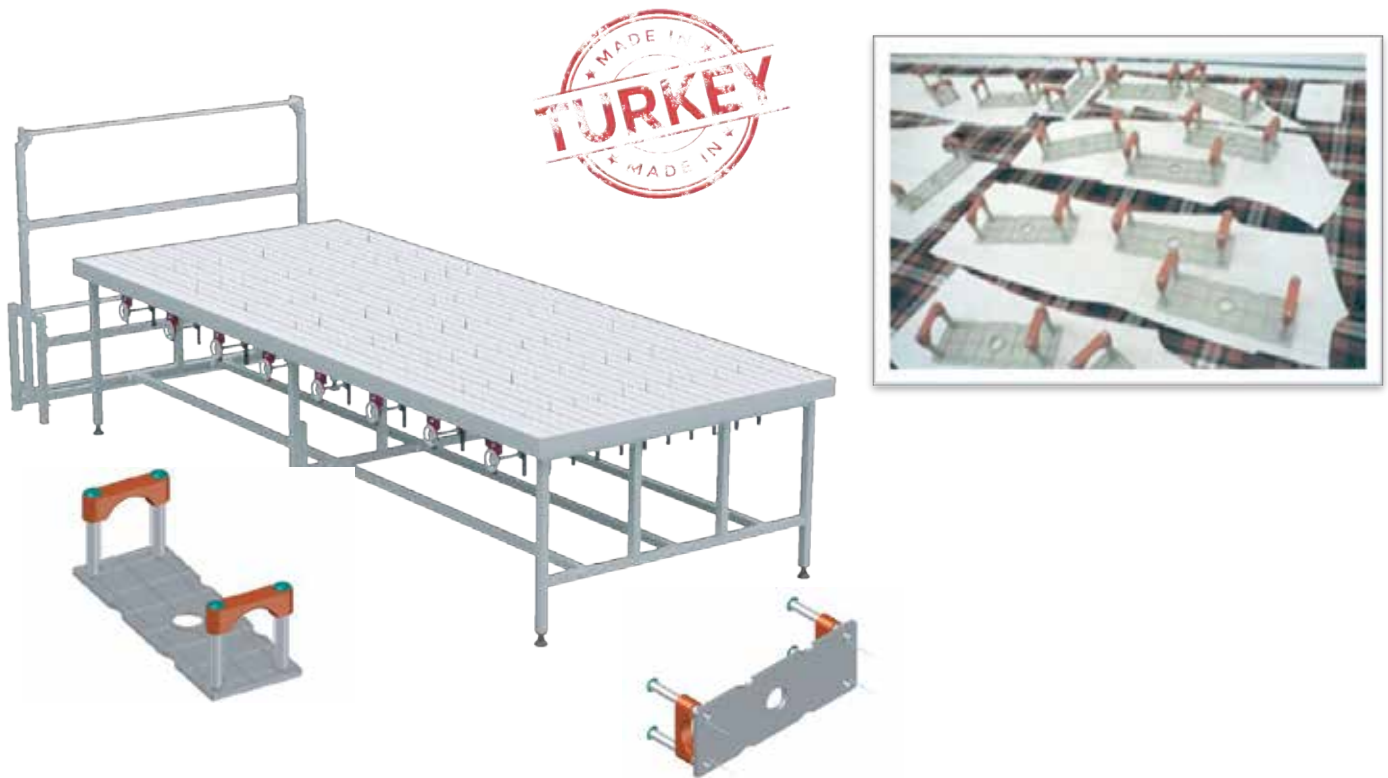


Technical Specifications

Power Consumption	70 W
Power Supply	100-260 V Auto Switch
Interface	USB 2.0
Inkjet Technology	HP 1645 or compatible
Inkjet Heads	HP 1/2/3/4
Paper Plot Width	180 cm/ 220 cm
Paper	Starting at 20 gr/m2
Noise Level	<40 dB
File Formates Accepted	HPGL/HPGL2/ISO/AAMA-ASTM/DXF
Software Requirement	Windows 7/Vista/XP 32 & 64 bits

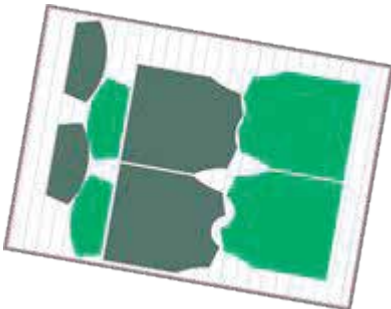
Printing Speed





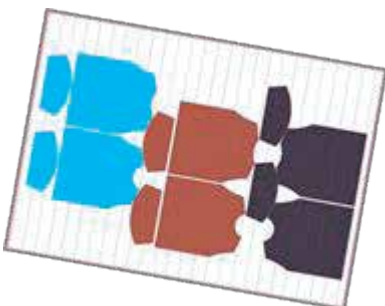
PIN-TABLE for checks, stripes and patterns

PROBLEM →



- ✓ Matching of checked and striped material had always been difficult and time consuming.
- ✓ Traditional methods tend to waste a lot of material, since the patterns are cut out with a blocking tolerance.
- ✓ The task of rearranging the blocked out patterns is tedious and expensive.
- ✓ The workers involved in this process have to be skilled.

SOLUTION →



- ✓ PIN-TABLE consists of a slotted aluminum top and Needle-Bars underneath.
- ✓ Each Needle-Bar has pins positioned inside the slots of the table top.
- ✓ The Needle-Bars can be moved freely along the length of the table.
- ✓ The height of the pins can be adjusted with the turn of a hand-wheel.
- ✓ Each pin can be individually locked down.
- ✓ Each pin has a rounded top
- ✓ The PIN-TABLE is an abstract copy of the marker

PIN-TABLE for checks, stripes and patterns

ADVANTAGES



- ✓ Improve your quality
- ✓ Spread and Match in one step
- ✓ Less fabric consumption
- ✓ Reduce your relaying operations
- ✓ Do fine cutting after spreading without relaying
- ✓ Prepare your lay for Automatic Fabric Cutting

SAVINGS



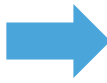
- ✓ 30 % to 50 % Savings in Labour Time
- ✓ Average material savings are between 3 to 7 % depends on material
- ✓ As a result of this, Less than 1 Year Payback time
- ✓ Since It is possible to use it for checks and stripes, payback time for auto cutter is also shortened

STANDARD FEATURES

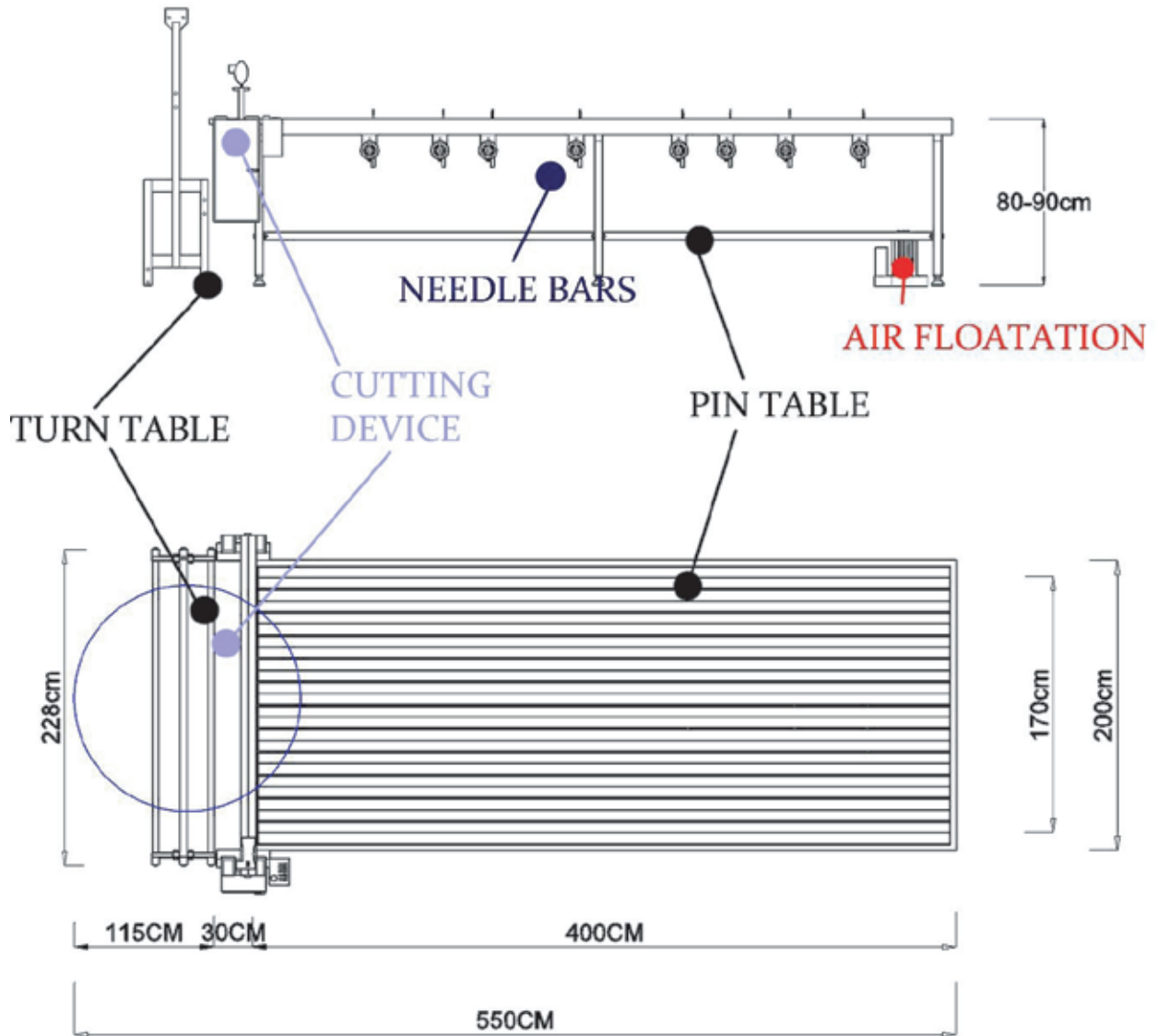


- ✓ Standard table size 170cm x 400cm
- ✓ Extra widths available from 180 to 240 cm
- ✓ Length is adjustable with 2 meter modules
- ✓ Needle diameter is 1.2 and 1.5 mm
- ✓ Needle height up to 10 cm
- ✓ Automatic end cutter
- ✓ Rollstand or Turntable
- ✓ Air Flotation (Blower) for easy movement of heavy lays
- ✓ Needle Plates

OPTIONAL FEATURES



- ✓ Additional needle bars
- ✓ Additional device for underlay paper and poly film



CUTTING DEVICE (PNEUMATIC DATA):

- PRESSURE: 5-10 bar
- CONSUMPTION: 15l/sec for ~ 2 Sec
- SUPPLY LINE: 5/16" or 8 mm

AIR FLOATATION (ELECTRICAL DATA):

- VOLTAGE: 1.5 kW
- CURRENT: 380 V
- RPM: 3000 Rpm/Min

Air Flotation Table



Manuel Transfer Kit



Converyorized Table



Table without Air Flotation



FABRIC ROLL OPENER



FABRIC TRANSFER AND CUTTING MACHINE





Highest Quality and Performance

EFKA : EXPERTISE in DRIVE TECHNOLOGY and AUTOMATION



AB221A



DC1500



V810



V820



V850



AB321A

ALL KINDS OF ORIGINAL SPARE PARTS FROM JAPAN AND ORIGINAL SOURCES



SCAN ME

Visit our website



SCAN ME

Download Catalogues



SCAN ME

Watch video

www.empenzosewing.com



Your Reliable Solution
Partners

Technical Support

+880 177 121 7302



service@empenzo.com

Our Websites



www.empenzo sewing.com



sewingspareparts

www.sewingspareparts.com

OUR AGENCY



Singapore Head Quarter
Address : 531 A Upper cross
street # 04-95
Hong Lim Complex
Singapore 051531
Telephone : +65 65 89 86 03
emperzosg@empenzo.com

Turkey Factory
Şeriafali Mahallesi Mevdudi
Sokak No.23
Ümraniye/Istanbul
Telephone :+90 216 420 04 58
+90 216 540 07 64
empenzotr@empenzo.com

Empenzo Bangladesh Liaison
Office Flat # A-1, House # 20
Road # 18, Sector # 3, U ara
Dhaka-1230, Bangladesh
Telephone : +88 01771 217302
empenzobd@empenzo.com

Empenzo Americas Corp.
12 Daniel Road , Suite 319
Fairfield - New Jersey
07004 USA
Tel : +1 (973) 850-96 55
empenzousa@empenzo.com

www.empenzo.com

empenzo@empenzo.com