



EMPENZO[®]
INDUSTRIAL GARMENTS PTE. LTD.

FULL SOLUTION FOR DENIM



YOUR RELIABLE PARTNERS

www.empenzosewing.com

EPZ-6000

AUTO POCKET SETTER FOR JEANS



FEATURES

- Easy-to-operate touch panel
- High-speed and stable multi-motor synchronous sewing technology
- Multiple testing functions such as input and output tests which is convenient for customers to find problems
- Application range: performing on various types of fabric
- Pattern data in memory: 999 pattern data in internal memory
- Redundancy device
- Thread breakage sensor
- Suction device
- Automatic stacker



Technical Feature

MODEL	EPZ-6000
Sewing Head	Brother Nexio Head
Sewing Area	280 x 250 mm
Motor	AC servo motor 750W (direct drive)
Max Pocket Size	230 x 230 mm
Maximum Sewing Speed	2800 rpm
Min Pocket Size	80 x 80 mm
Stitch Length	0.1 - 20 mm(0.1 step)
Time for Jig Change	5 min
Power Requirement	220 V Single-Phase 50/60 Hz
Air Consumption	15 L/min



CAPACITY: 9000 PANELS / 540 MIN.

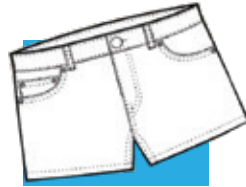
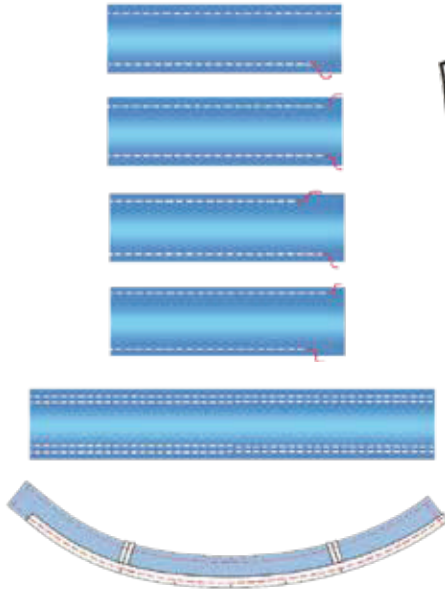


**TROUSERS RIGHT AND LEFT PANELS
CAN BE SEWED AT THE SAME TIME**



Double Waistband
Perfectly Matched
With
Practical Solution

Skip Stiches(User Programmable)

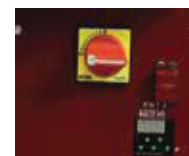


Technical Features

Belt machine

- Automatic entry-exit cutting
- Automatic entry-exit stitch skipping
- Automatic foot lift
- Touch screen Turkish, English, Spanish
- Small top and bottom pulling roller
- Roller adjustment system
- Easy roller changing system
- Independent support system (BDS)
- Automatic blade back hammer
- Needle cooler
- L type toe foot plate
- Reinforced T-type arbor
- Blade cutting distance : 55mm

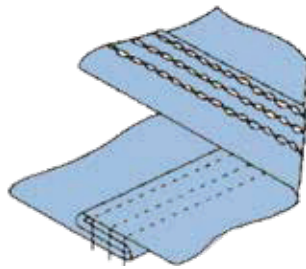
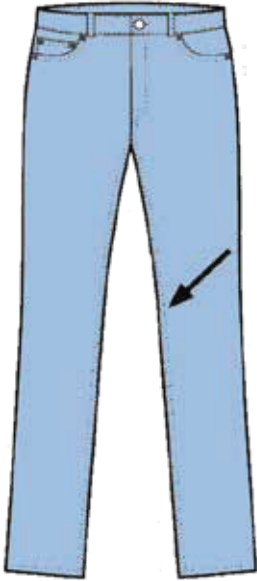
Technical Specifications	
Sewing Head	DLR 1509 KANSAI Waistband
Motor	Direct Drive Servo motor 220w
Max-Speed	3200 R.P.M
Capacity	1700-2500 Piece in 8 Hours
Dimensions	71X98X125
Weight	Net-125 KG Gross-180 KG



KZ-1060-JL-T2-ZD-1001
KZ-1060-JL-T2

WITH KNIFE HIGH SPEED FEED OF THE ARM MACHINE FOR HEAVY MATERIAL
WITHOUT KNIFE HIGH SPEED FEED OF THE ARM MACHINE FOR HEAVY MATERIAL

Full Oil
High Speed
Circulation



Technical Features

- Fully oiled arm machine
- Fully oiled direct drive gearbox
- Double tension Ball ballet system
- Small top and bottom pulling roller
- Automatic foot lift
- L type toe foot table
- Reinforced T type arbor
- Vacuum thread cutting system

Technical Specifications

Motor	Direct Drive Servo Motor 220w
Max Sewing Speed	5000 R.P.M

Double Pulling System



KZ-1060-JL-T2
GAUGE SIZE
1/8-1/8

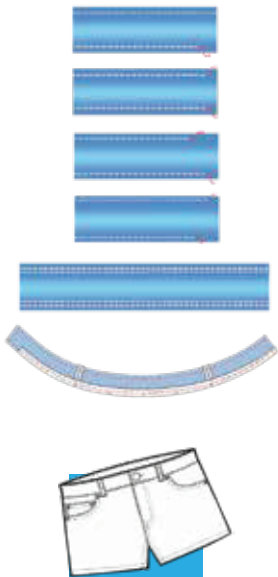


KM-930 GD

AUTOMATIC STRAIGHT/CURVED WAISTBAND MACHINE

Practical Solutions for the Double Waistband

Skip Stiches(User Programmable)



Technical Specifications

Sewing Head	FBX 1106P KANSAI Waistband
Motor	Direct Drive Servo Motor 220 W
Max-Speed	3200 R.P.M
Capacity	1700-2500 Piece in 9 Hours
Dimensions	71X98X125
Weight	Net-125KG Gross-180KG



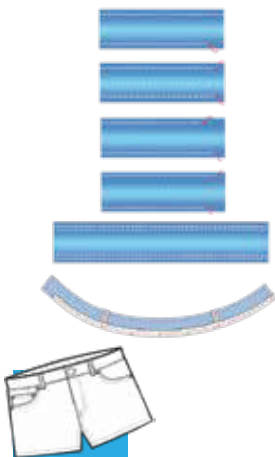
KM-930-GD GAUGE SIZE
1/4-1 1/4-1/4
1/4-1 1/2-1/4
1/4-1 3/4-1/4
1/4-1 1/4-1/4
1/4-2-1/4
1/4-2 1/4-1/4

KM 930 ST/LS-T2

AUTOMATIC STRAIGHT/CURVED WAISTBAND MACHINE

Practical Solutions for the Double Waistband

Skip Stiches(User Programmable)



Technical Specifications

Sewing Head	FBX 1104P KANSAI Waistband
Motor	Direct Drive Servo Motor 220 W
Max-Speed	3200 R. P.M
Capacity	1700-2500 Piece in 9 Hours
Dimensions	71X98X125
Weight	Net-125KG Gross-180KG

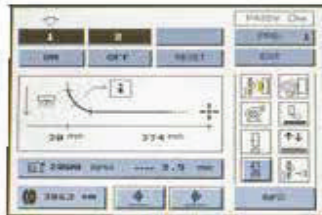
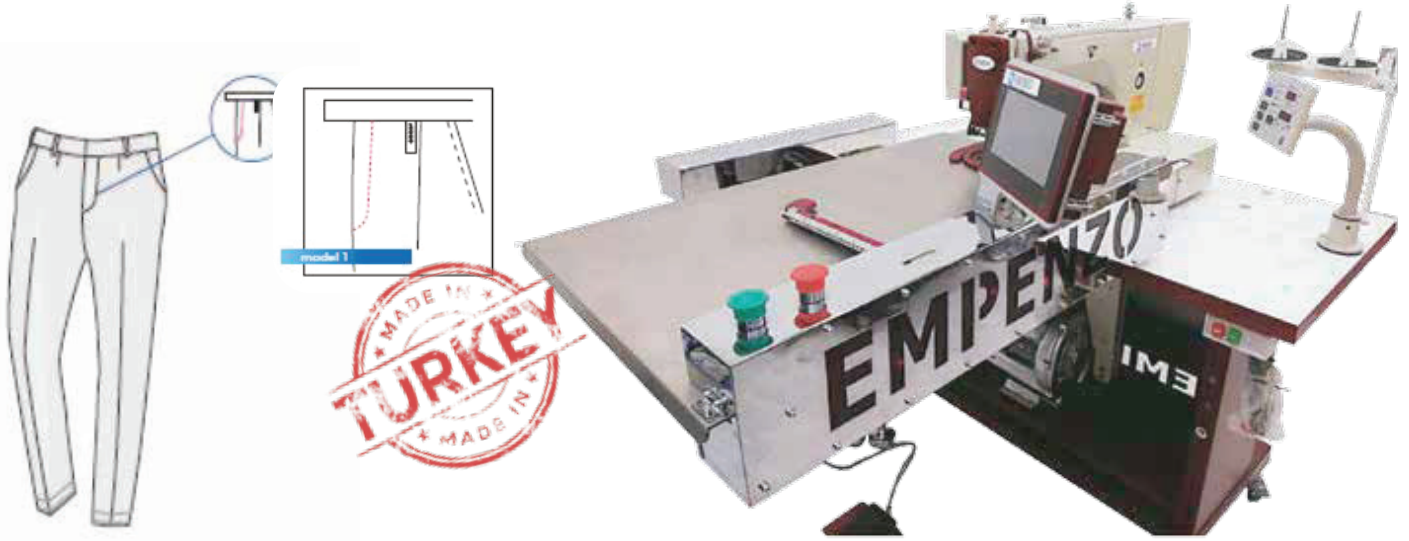


KM 930 ST/LS-T2 GAUGE SIZE
1/4-1-1/4 : 38.1
1/8 - 1/8-1-1/8-1/8
1 3/8 Levis Type
1/4-1 1/4-1/4:
1/8-1/8- 1/4-1/8



Production Capacity 3500 pcs/ 8 hours

Machine suitable for Top Fly J Sew of Jeans, Casual Trousers and Working Uniforms.



Technical Feature

MODEL	EPZ-500-TR
Sewing Head	Empenzo Sewing Head
Sewing Area	220 x 110 mm(WxH)
Needle Distance	0.05-12.7 mm
Motor	550w Direct Drive System
Sewing Speed	2700 rpm (Maximum)
Application	Various Thick and Thin Cloths
Data Storage Way	USB
Air Pressure	6 Bar
Voltage	220 V 50/60Hz
Machine Size	1550 x 1150 x 1420 mm(LxWxH)
Weight	240 Kg
Adjusting Time of Mould	About 5 Munites



- Color graphic display
- Optimized process with specially balanced machine head
- Very quiet running
- Enhanced interlining system with stepper motor
- Easily operated and easily managed with its specially simplified shape
- Possibility to create 30 different programming
- Possibility to create 5 different cycles in each program
- Enhanced full automatic corner
- Knife Station with stepper motor
- Ability to work from 20 mm to 220 mm in pocket sewing

Trousers pockets
Inside and outside pockets of men's jackets
Combed cotton

OPTIONS:

1. Stacking
2. Interlining
3. Vacuum
4. Ausrole
5. Bottom Bobbin Sensor



Precision-enhanced interlining unit with stepper motor



Precision-enhanced corner knife system with stepper motor



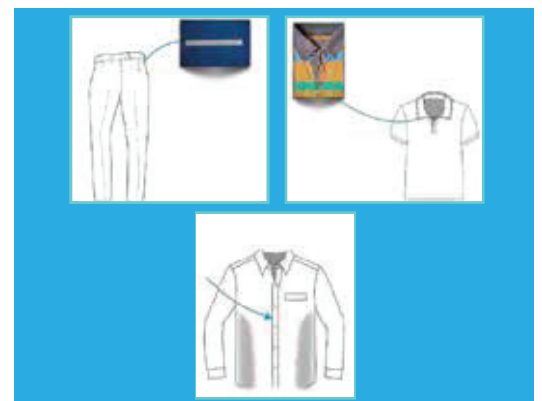
Easy-to-understand display interface



Ability to work from 20 mm to 220 mm in pocket stitching

Technical Feature

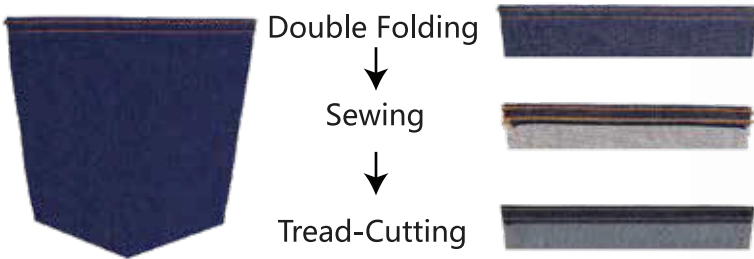
Model	EPZ-200
Sewing Head	Brother Model C series direct-drive Needle transport lock stitch
Motor	Efka 550 W Mini Stop DC or Direct Drive DC Servo Sewing Motor
Maximum Sewing Speed	3.000 r.p.m
Maximum Stitch Length	0,5 or 3 mm
Stitch type	301(Lockstitch)
Needle Distances(mm)	8-22 Standard / 24-36 Optional
Connection Voltage	Single-Phase A.C. 230 V, 50/60 Hz
Air Pressure	6 bar
Dimension(LxWxH)	140x80x120 cm
Machine Net Weight	200 kg



EPZ-600 PLS 2 NEEDLE LOCK STITCH
 EPZ-700 PCS 2 NEEDLE CHAIN STITCH
 EPZ-8600 PCS 3 NEEDLE CHAIN STITCH

AUTOMATIC POCKET HEMMER

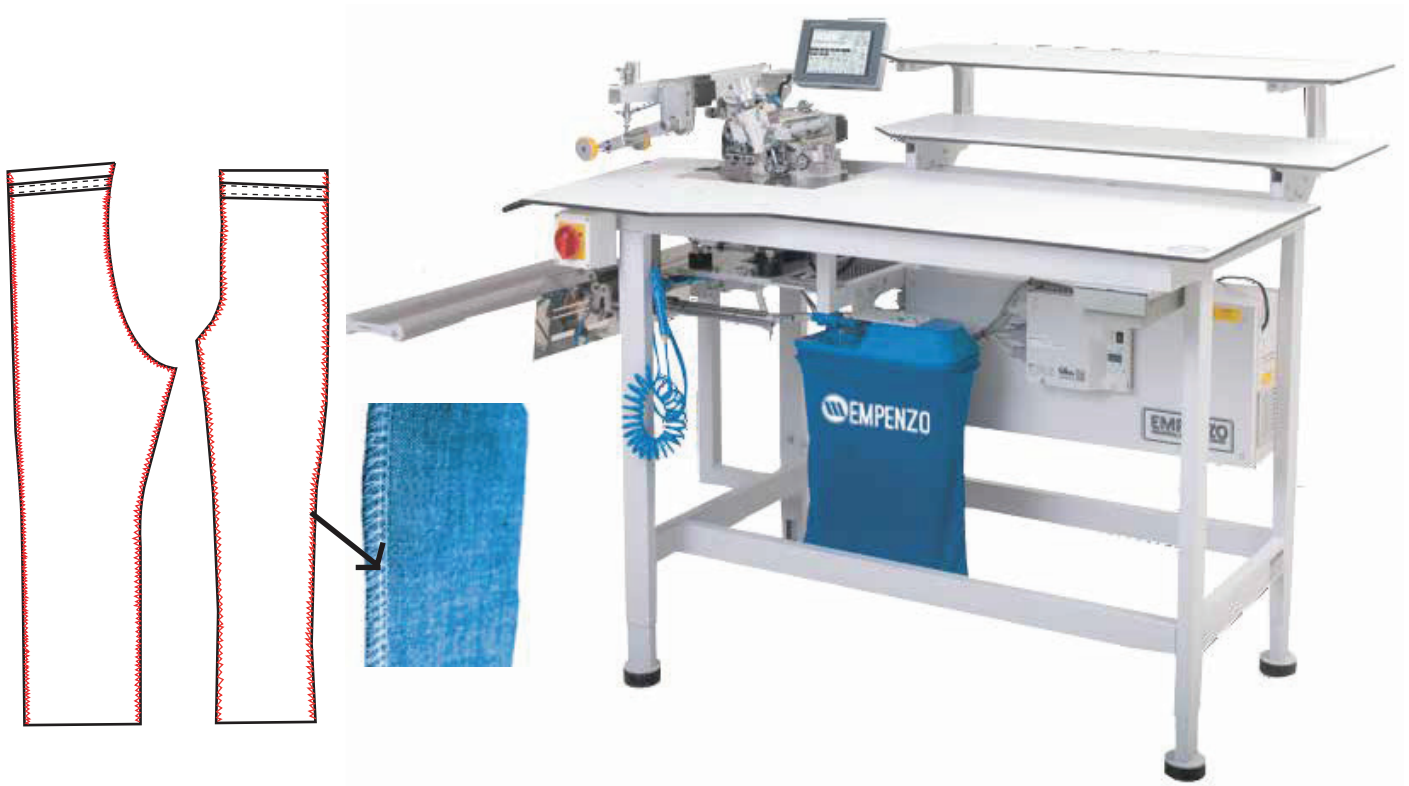
The only thing that you have to do is setting pocket parts. Then you can continue the operation easily, safely and speedily



Technical Features

Model	EPZ-600 PLS	EPZ-700 PCS	EPZ-8600 PCS
Machine Head	2 Needle lock stitch Machine	Kansai 2-Needle Double Chainstitch Industrial Sewing Machine	Jack JK- 8560 WD Flat Bed, 3 Needle Double chain stitch
Max. Sewing Speed	3,000 rpm	4,000 rpm	4000 RPM
Sewing Pitch	2 ~ 4mm	2 ~ 4mm	2 ~ 4 mm
Thickness of Hemming	11 ~ 18mm (Binder switch is necessary)	11 ~ 18mm (Binder switch is necessary)	11 ~ 18 mm (Binder switch is necessary)
Needle	DP×5 #16×21	TV×7 #16 ~ 21	TV x 7 # 16~21
Control	Micro computer control	Micro computer control	Micro Computer control
Voltage	3-phase · 1-phase 200 ~ 240V	3-phase · 1-phase 200 ~ 240V	3- Phase-1 Phase 200-240 v
Air Presser	0.5Mpa (5 kg / cm ²)	0.5Mpa (5 kg / cm ²)	0.5Mpa (5 kg / cm ²)
Air Consumption	0.5 litre / 1piece	0.5 litre / 1piece	0.5 lit/ 1 piece
Power Presser	0.7kw	0.7kw	0.7 kw
Production Capacity	30piece / min (Pocket width 220mm · Sewing pitch 3mm)	40piece / min (Pocket width 220mm · Sewing pitch 3mm)	40 pcs/min
Dimensions	1,100×1,370mm	1,100×1,370mm	1,100×1,370mm
Option	Semi-auto name-label sewing device Name-label Width (Gauge switch is necessary) 9 ~ 12mm Stacker device		Usage of 3 needle Double chain stitch No need change Gauge 1/4" & 1/8" stitch Only need of choosing proper needle and changing thread pass depend on your gauge size

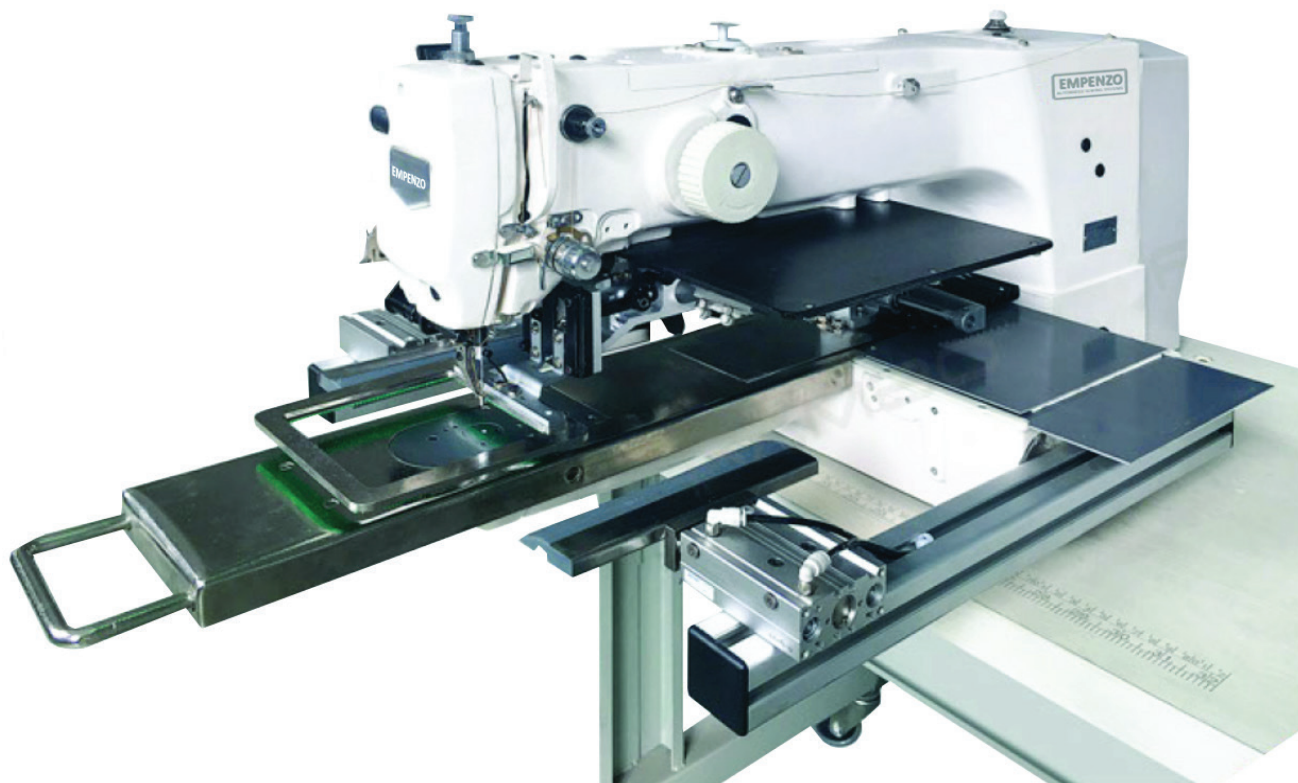




Technical Feature

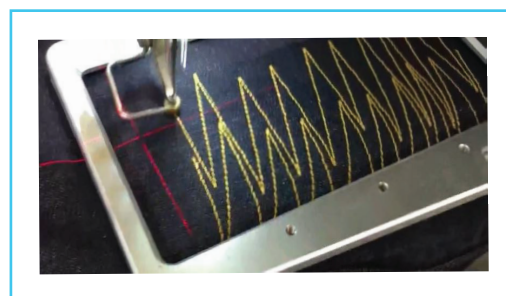
MODEL	EPZ-9000 DM
Machine Head	Pegasus EX 5214 three thread overlock
Max. Sewing Speeds	6.000 r.p.m
Max. Stitch Length	1 or 3,8 mm
Connection Voltage	Single-Phase A.C. 230 V, 50/60 Hz
Air Pressure	6 bar
Dimensions(LxWxH)	155 x 105 x 120 cm
Performance	480.Min. Approximately 2.000 Pieces of Front or Back Edge
Packing Size	186 cm x 117 cm x 145 cm
Weight	145 kg
Option	Universal Stacking
Areas of Usage	Denim Applications





Technical Characteristics

1. Juki type head, touch screen
2. Working area: 100*200 mm
3. Robot to press fabric
4. Specially used on Jeans pants,
5. boots, bags, suitcase etc.
6. Very easy to sewing without open side seam.
7. Sewing pattern freely making
8. No skills required



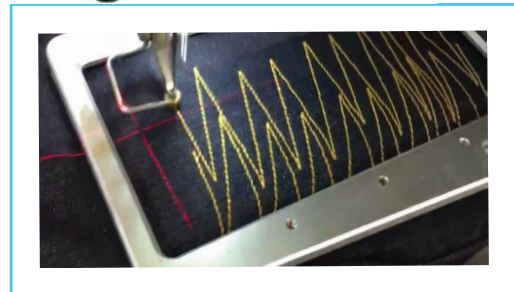
Technical Specifications

Machine Head	Juki Type Empenzo
Max Speed	2700 rpm
Sewing Area	100mX200mm
Stitch Length	0.05mm-12.70mm
Dimensions	105x80x135cm
Power	Single phase 220 V
Weight	200kg



Technical Characteristics

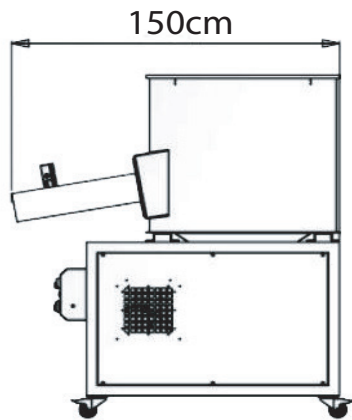
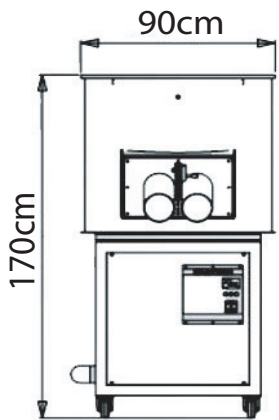
1. Juki type head, touch screen
2. Working area: 200*300 mm
3. Robot to press fabric
4. Specially used on Jeans pants,
5. boots, bags, suitcase etc.
6. Very easy to sewing without open side seam.
7. Sewing pattern freely making
8. No skills required



Technical Specifications

Machine Head	Juki Type Empenzo
Max Speed	2700 rpm
Sewing Area	200mX300mm
Stitch Length	0.05mm-12.70mm
Dimensions	105x80x135cm
Power	Single phase 220 V
Weight	200kg

*Digitally Adjustable Vacuum
Independently and Easily Cleanable Filter
Soundless System
Smoothly Vacuum System*



Technical Feature

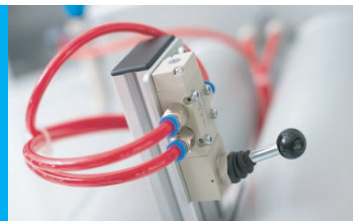
MODEL	EPZ-400 TM
Voltage	360V
Power	3KW/6A
Air Pressure	6-7 Bar
Net Weight	240kg



Adjustable vacuum intensity, System shuts off when the machine left on, Motor cooling feature.



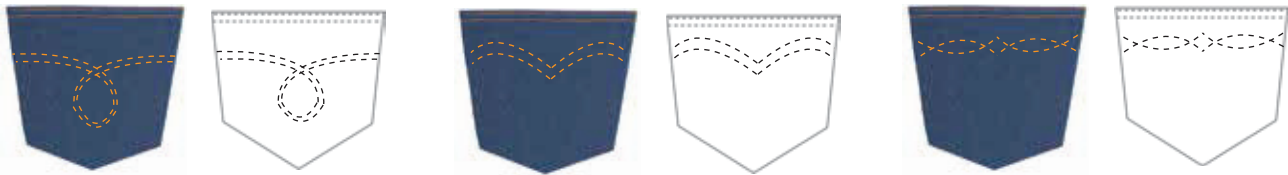
Easily cleanable separate special filter



Adjustable to user ergonomic design



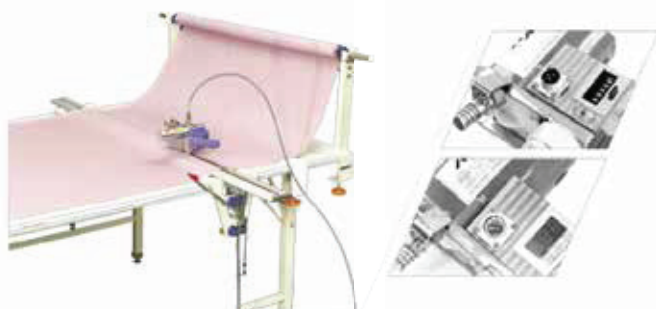
Best equipment



**Sewing Completely According to
Stitching Data
Easy to Operate**

Technical Feature

MODEL	EPZ-9000 DM
Supporting Head	BROTHER Machine Head
Sewing Region	220x110 mm (WxH)
Needle Distance	0.05-12.7 mm
Motor	Direct Drive System
Sewing Speed	2700 rpm(Maximum)
Application	Various Thick and Thin Cloths
Data Storage Way	USB
Air Pressure	0.5Mpa 1.8L/min
Voltage	220V 50/60Hz
Machine Size	1680x1180x1320mm(LxWxH)
Weight	250 kg



**1. ACCURATE ELECTRONIC
COUNTING,DIGITAL DISPLAY**

**2.AUTO-BACK, OUTAGE MEMORY
AND NUMBERS SETTING FUNCTION**



EPZ-406 -TR
 EPZ-406-407-TR-SYS
 EPZ-408-TR-SYSBLA

FEEDING AUTOMAT WITH SEWING HEAD FOR UNDER BUTTONS OF JEANS
 FEEDING AUTOMAT SYSTEM FOR UNDER BUTTON OF JEANS
 FEEDING AUTOMAT SYSTEM FOR UNDER BELT LOOP ATTACHING



EPZ-406-TR



EPZ-406-407-TR-SYS



EPZ-408-TR-SYSBLA

Specification:

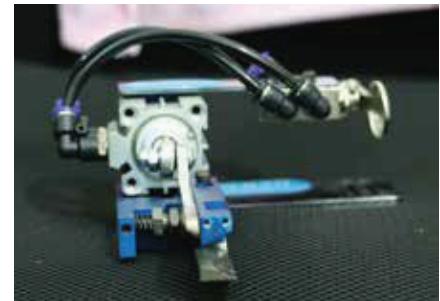
- Interline Cutting and feeding system at desired length under the button.
- Standard stopping position due to special transport system.
- Easy to adjust of different sizes.
- Excellent Stitch quality.
- Oil free working environment.
- Automatic tension system patented
- Automatic thread trimming and thread wiper.
- Memory function of 50 different bartacking style
- Direct Drive servo motor technology(3200rpm)
- Belt free vibration free and silent working environment.
- High efficiency-Outstanding performance
- Maximum energy saving
- Optional: XLC big rotary hook.

y



EPZ-1032-TR

TAPE THREAD CUTTING SYSTEM WITH BUTTON



EPZ-1033-CH(CHILD-35mm)
EPZ-1034-CH(ADULT-42mm)

BELT LOOP TRIMMER



SAVE YOUR MONEY

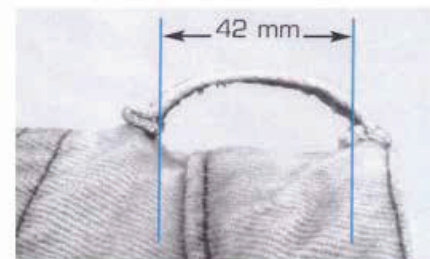
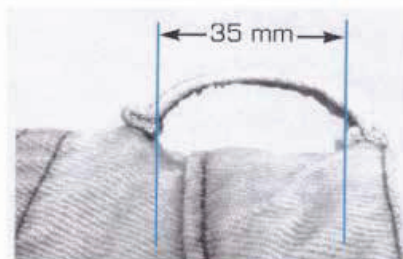

 ~ 300
 1 person + 10 min / day

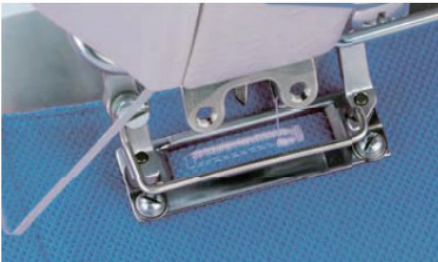

 ~ 600 - 900
 1 person + 1 min / day

Two versions available : 35mm or 42mm

CALCULATE YOUR BENEFIT:

	by 	by 
Loops/hour	~ 300	~ 600 to 900
Loops/trousers		
Trousers/hour		
Daily working hours		
Trousers/day		





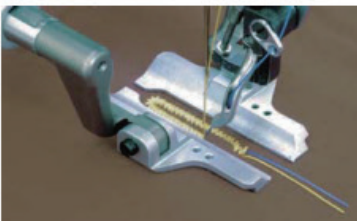
Technical Features

1. New type of hook to prevent sewing problems
2. Small pattern with beautiful stitches
3. Using the new model of hook to prevent the thread broken. Low tension makes beautiful stitches
4. Needle pendulum minimum resolution of each pulse increased 0.05mm, to prevent the incision after the knife part of the fluff. All kinds of sewing patterns can be accurately sewing
5. Needle pendulum minimum resolution of each pulse increased 0.05mm, to prevent the incision after the knife part of the fluff. All kinds of sewing patterns can be accurately sew
6. This is useful for preventing dimples from forming during bar tacking. It is also useful for stretching the buttonholes to stop the seam from unraveling, which can often happen with materials with coarse weaves

Technical Specifications	
Max. sewing speed	4200
Sewing area (XxY)	Max 120mm
Max. number of stitches	Max. 14mm
Standard sewing	21
Number of stored patterns	50
Max. number of needles / 1 program	999
Voltage Volt/km	Single phase 110V/220V, Three phase 220V/380V

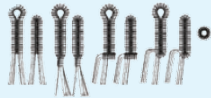


EPZ-1006 CN
EPZ-1006-1 CN
EPZ-1006-2 CN

ELECTRONIC EYELET BUTTON HOLE SEWING MACHINE FOR DENIM



Special process processing of gears and cams, a significant reduction in the machine noise and vibration, after a scientific experimental test, the noise than the historical data reduced by 8-10 dB, the operator's comfort greatly improved. Improved the thread catch structure to avoid the thread fall off.

Technical Features

Specification	EPZ-1006 CN	EPZ-1006-1 CN	EPZ-1006-2 CN
Needle thread trimmer	Long thread trim	Long thread trim	Short thread trim
Bobbin thread trimmer	None	Long thread trim	Short thread trim
Main application	Suit-dress	Men's clothing, casual clothing	Jeans trousers, trousers
Other applications	Men's clothing, casual clothing, jeans trousers, trousers	Suit-dress jeans trousers, trousers	-----
Function	Only trim the needle thread. The max. length of button hole is 50mm;	Trimming both needle thread and bobbin thread.	Trimming both needle thread and bobbin thread. No need second trim
Sewing shape			
Sewing length	(Round-head eyehole) 8-50mm (Straight button hole) 5-50mm	Round-head eyehole) 8-42mm (Straight button hole) 5-42mm	22-30mm* 14-22mm* 18-26mm* 26-34mm* 34-42mm*
Press foot length (standard)	30mm		30/26mm
Length of hammer (standard)	22mm		24/20mm
Length of hammer (accessory)	30mm		28/24mm
Sewing speed	1000-2500 rpm		
Needle code	0.5-2.0mm		
Zigzag sewing width	(In mechanical conditions, it is 4.0mm wide at most and the zigzag sewing width is 5.0 at most.)		
Zigzag sewing width (factory setting)	2.5mm		3mm
Length of stream thread	0-20mm		
Height of work clamp	Standard height is 12mm (may reach 16mm at highest)		16mm
Start-off mode	Double pedal switch		
Fabric feeding device	Intermittent cloth-sending of 3 pulse motors (X, Y,)		
Machine needle 4	DOx558 Nm80 - Nm120		
Safe setting	If there are any problems, the inner setting with urgent stop function and driven by safe circuit will automatically stop the machine		
Upper shaft motor	AC-servo motor 550W		
Air pressure	(Main regulator) : 0.5 Mpa (Hammer-pressure regulator) : 0.4 Mpa		
Air consumption volume	43.2 liter/minute (8 cycles/minute)		
Power supply	(Single phase) 100V/200V, (Three phases) 200V/220V/380V/400V, 400VA		
Weight	(Machine head):≈120 kg (Operation board):≈0.6 kg / (Control box):14.2-16.2 kg		



Highest Quality and Performance

EFKA : EXPERTISE in DRIVE TECHNOLOGY and AUTOMATION



AB221A



DC1500



V810



V820



V850



AB321A

ALL KINDS OF ORIGINAL SPARE PARTS FROM JAPAN AND ORIGINAL SOURCES



Visit our website



Download Catalogues



Watch video

www.empenzosewing.com



Your Reliable Solution
Partners

Technical Support

+880 177 121 7302



service@empenzo.com

Our Websites



www.empenzosewing.com



sewingspareparts

www.sewingspareparts.com

OUR AGENCY



Singapore Head Quarter
Address : 531 A Upper cross
street # 04-95
Hong Lim Complex
Singapore 051531
Telephone : +65 65 89 86 03
emperzosg@empenzo.com

Turkey Factory
Şeriafali Mahallesi Mevdudi
Sokak No.23
Ümraniye/Istanbul
Telephone : +90 216 420 04 58
+90 216 540 07 64
empenzotr@empenzo.com

Empenzo Bangladesh Liaison
Office Flat # A-1, House # 20
Road # 18, Sector # 3, U ara
Dhaka-1230, Bangladesh
Telephone : +88 01771 217302
empenzobd@empenzo.com

Empenzo Americas Corp.
12 Daniel Road , Suite 319
Fairfield - New Jersey
07004 USA
Tel : +1 (973) 850-96 55
empenzousa@empenzo.com

www.empenzosewing.com

empenzo@empenzo.com