

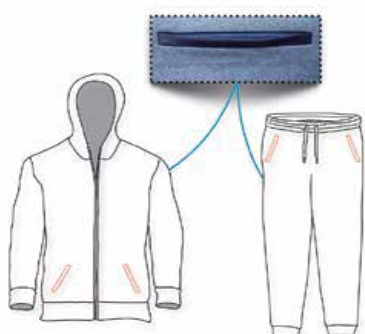


SUIT SEWING MACHINE



YOUR RELIABLE PARTNERS

www.empenzo.com



USAGE AREA

Combed cotton
Zippered tracksuit



Precision-enhanced corner knife system with stepper motor



Instant zipper knife cutting system



Easy-to-understand display interface



Precision-enhanced interlining unit with stepper motor



Technical Features

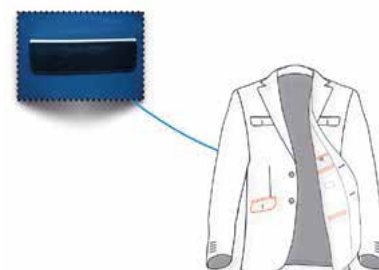
- Empenzo head double needle lockstitch
- Color graphic display
- Optimized process with specially balanced machine head
- Very quiet running
- Enhanced interlining system with stepper motor
- Easily operated and easily managed with its specially simplified shape
- Possibility to create 30 different programming
- Possibility to create 5 different cycles in each program
- Enhanced full automatic corner
- Knife Station with stepper motor
- Instant zipper knife cutting system
- Zipper holder piston system
- Motorized zipper transmitter system
- Motorized specially designed stacking
- Ability to work from 20 mm to 220 mm in pocket sewing

Technical Specifications

Production Capacity	300-350 Pices/Hours
Max. Sewing Speed	500-3000 Rpm
Max. Stitch Length	1 - 4,5 mm
Connection Voltage	AC 220 V , 50 / 60 Hz
Air Pressure	6 bar

OPTIONS

- Stacking
- Interlining
- Vacuum
- Ausrole
- Bottom Bobbin Sensor



USAGE AREA

Trousers pockets.
Inside and outside pockets of men's jackets.



Precision-enhanced interlining unit with step-per motor inclined stitching range from 0.1 to 8 mm



Precision-enhanced corner knife system with stepper motor



Easy-to-understand display interface



Technical Features

- Empenzo head double needle lockstitch
- Color graphic display
- Fully automatic corner knife station with improved stepper motor for precise slanted incisions
- Optimized process with specially balanced machine head
- Very quiet running
- Enhanced interlining system with stepper motor
- Easily operated and easily managed with its specially simplified shape
- Possibility to create 30 different programming
- Possibility to create 5 different cycles in each program
- Ability to work from 20 mm to 220 mm in pocket sewing

Technical Specifications

Production Capacity	250-300 Pieces/Hours
Max. Sewing Speed	500-2800 Rpm
Max. Stitch Length	1 - 4,5 mm
Connection Voltage	AC 220 V , 50 / 60 Hz
Air Pressure	6 bar

OPTIONS

- Stacking
- Interlining
- Vacuum
- Ausrole
- Bottom Bobbin Sensor



USAGE AREA

- Jacket
- Fabric pants
- Chino pants



Ease of sewing wide facings



Holder for stacking with stepper motor



Motorized stacking unit



Simplified clear opening act cutting system



Technical Features

- Brother Direct Drive sewing head (NEXIO 7300 A)
- Color Graphic Display
- Tight stitching and zigzag option from the panel at the beginning and end of sewing
- The beginning and end of sewing, Photocell control or possibility to work with mm control
- High performance due to the unit texture working independently
- Easily operated which is specially designed simplified with pregroup
- It achieves stitch sewing with step control at the beginning and end of sewing
- Ability to sew for right, left jacket pocket without programming
- Minimal margin of error with the pregroup section which has specially and simplify design

Technical Specifications	
Production Capacity	800-1000 Pieces/Hours
Max. Sewing Speed	500-4500 Rpm35
Max. Stitch Length	1 - 4,5 mm
Connection Voltage	AC 220 V , 50 / 60 Hz
Air Pressure	6 bar

OPTIONS

- Bottom Bobbin Sensor



USAGE AREA

Trousers pockets
Inside and outside pockets of men's jackets
Combed cotton



Precision-enhanced interlining unit with stepper motor



Precision enhanced corner knife system with stepper motor



Easy-to-understand display interface



Ability to work from 20 mm to 220 mm in pocket stitching



Technical Features

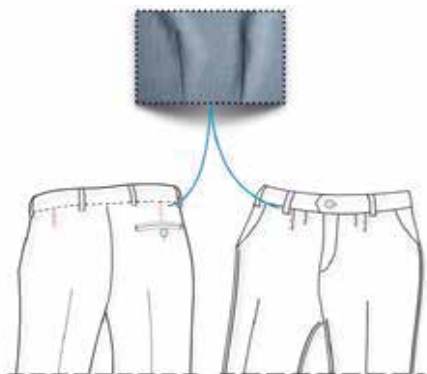
- Empenzo head double needle lockstitch
- Color graphic display
- Optimized process with specially balanced machine head
- Very quiet running
- Enhanced interlining system with stepper motor
- Easily operated and easily managed with its specially simplified shape
- Possibility to create 30 different programming
- Possibility to create 5 different cycles in each program
- Enhanced full automatic corner
- Knife Station with stepper motor
- Ability to work from 20 mm to 220 mm in pocket sewing

Technical Specifications

Production Capacity	350 - 400 Pieces/Hours
Max. Sewing Speed	500-3000 Rpm
Max. Stitch Length	1 - 4,5 mm
Connection Voltage	AC 220 V , 50 / 60 Hz
Air Pressure	6 bar

OPTIONS

- Stacking
- Interlining
- Vacuum
- Ausrole
- Bottom Bobbin Sensor



USAGE AREA

Fabric pants
Chino pants



Due to the vacuum, it allows easy sewing even on the most delicate fabrics



Special designed vacuum unit



Easy screen adjustment due to one-on-one synchronous motors



Freely programmable sewing functions



Technical Features

- Brother Direct Drive sewing head (NEXIO 7250 A)
- Color Graphic Display
- Tight stitching and zigzag option from the panel at the beginning and end of sewing
- Stitches without stitch sewing with step control at the beginning and end of sewing
- Fast production due to specially designed vacuum unit
- The capacity to realize the healthiest sewing even in different thickness materials due to its special system
- Easy to understand interface and convenient programming
- Freely programmable sewing functions
- Great seams without experience due to vacuum unit
- Standard dimensions in sewing with fixing fabrics by vacuum unit

Technical Specifications

Production Capacity	Pieces/Hours
Max. Sewing Speed	500-4500 Rpm
Max. Stitch Length	1 - 4,5 mm
Connection Voltage	AC 220 V , 50 / 60 Hz
Air Pressure	6 bar

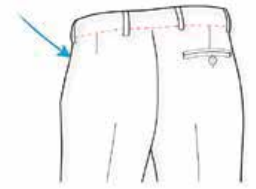
OPTIONS

Bottom Bobbin Sensor



USAGE AREA

Fabric pants
Chino pants



New generation walking needle
Brother head is used



Double pallet puller system

Technical Features

Brother Direct Drive sewing head (NEXIO)
Great stitch quality due to needle feed and roller
Beltless, vibration-free and silent running

Technical Specifications

Production Capacity	800-1000 Pieces/Hours
Max. Sewing Speed	500-4500 Rpm
Max. Stitch Length	1 - 4,5 mm
Connection Voltage	AC 220 V , 50 / 60 Hz
Air Pressure	6 bar



USAGE AREA
Fabric pants
Chino pants



EXT Pegasus head is used



Ability to adjust the stitch sewing from the screen to both endpoints



Manual running system, the possibility of running in a row without stopping

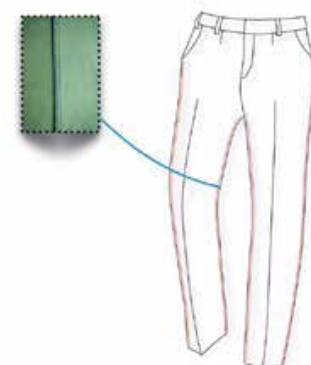


Technical Features

- Machine head with original Y-foot system and Ext Pegasus transport
- Efka motor AB 221 and driver
- Color graphic display
- Two thread chain stitch and five thread closed stitching
- Stepper motor pallet system that provides motion of the fabric
- Stepper motor unit that allows you to control the upper and lower stitch sewing from the display
- Manual running option
- Additional chamber for collecting waste thread
- Serial running without waiting

Technical Specifications

Production Capacity	350-400 Pieces/Hours
Max. Sewing Speed	500-7000 Rpm
Max. Stitch Length	1 - 4,5 mm
Connection Voltage	AC 220 V , 50 / 60 Hz
Air Pressure	6 bar



USAGE AREA
Fabric pants
Chino pants



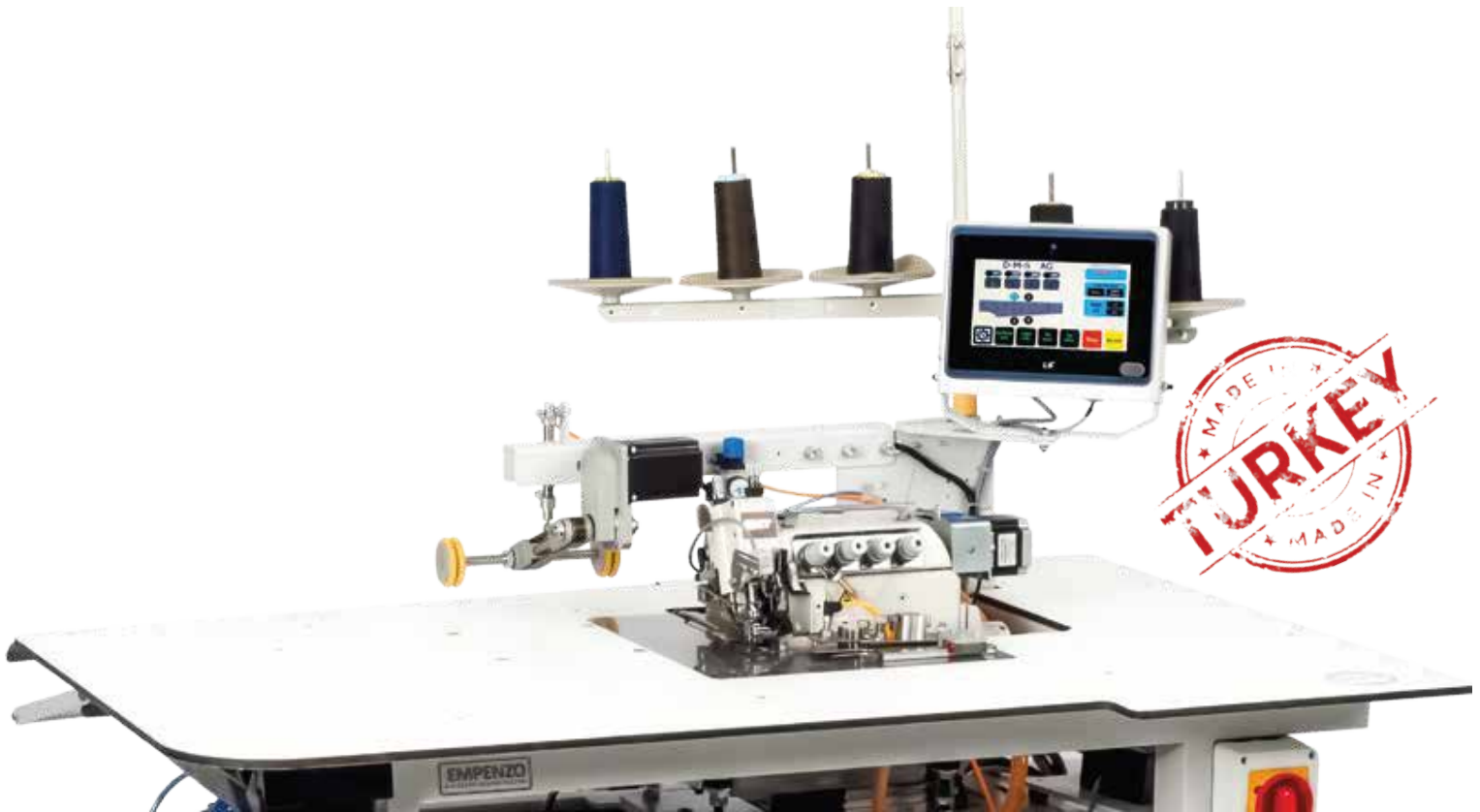
EXT Pegasus head is used



Ability to adjust the stitch sewing from the screen to both endpoints



Manual running system, the possibility of running in a row without stopping

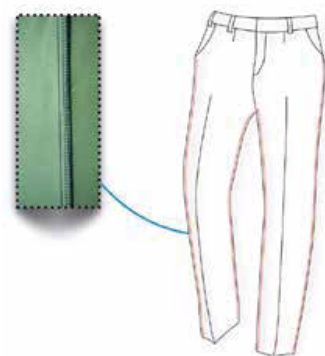


Technical Features

- Machine head with original Y-foot system and Ext Pegasus transport
- Efka motor AB 221 and driver
- Color graphic display
- Two thread chain stitch and five thread closed stitching
- Stepper motor pallet system that provides motion of the fabric
- Stepper motor unit that allows you to control the upper and lower stitch sewing from the display
- Manual running option
- Additional chamber for collecting waste thread
- Serial running without waiting

Technical Specifications

Production Capacity	350-400 Pieces/Hours
Max. Sewing Speed	500-7000 Rpm
Max. Stitch Length	1 - 4,5 mm
Connection Voltage	AC 220 V , 50 / 60 Hz
Air Pressure	6 bar



USAGE AREA
Fabric pants
Chino pants



Original Y foot system Machine Head with Ext Pegasus transport



Excellent sewing quality due to lower and upper transport



Optional 3 rope 4 rope 5 rope head usage



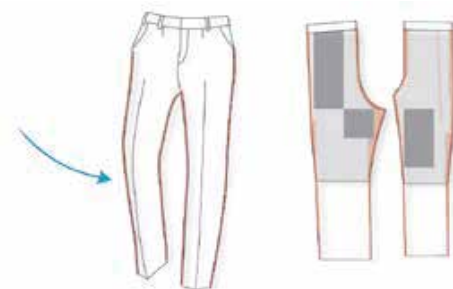
Technical Features

- Machine head with original Y-foot system and Ext Pegasus transport
- Efka motor AB 221 and driver
- Great stitch quality due to upper and lower transport
- Photocell controlled, air thread cutting and vacuum waste suction system
- Pneumatic foot lift
- Possibility to use 3 thread 4 thread 5 thread (optional)
- Time saving due to holder and stacking
- Additional chamber for collecting waste thread

Technical Specifications

Production Capacity	300-350 Pieces/Hours
Max. Sewing Speed	500-7000 Rpm
Max. Stitch Length	1 - 4,5 mm
Connection Voltage	AC 220 V , 50 / 60 Hz
Air Pressure	6 bar

EPZ-215 SERGING AUTOMAT WITH OR WITHOUT LINING



USAGE AREA
Fabric pants



EXT5204-02 Pegasus head



Impeccable stitch sewing even on tough fabrics



Non-standby serial operation



Technical Features

EXT5204-02 Pegasus head

Efka motor AB 221 and driver

Color graphic display

Stepper motor pallet system that provides motion of the fabric

Stepper motor unit that allows you to control the upper and lower stitch sewing from the display

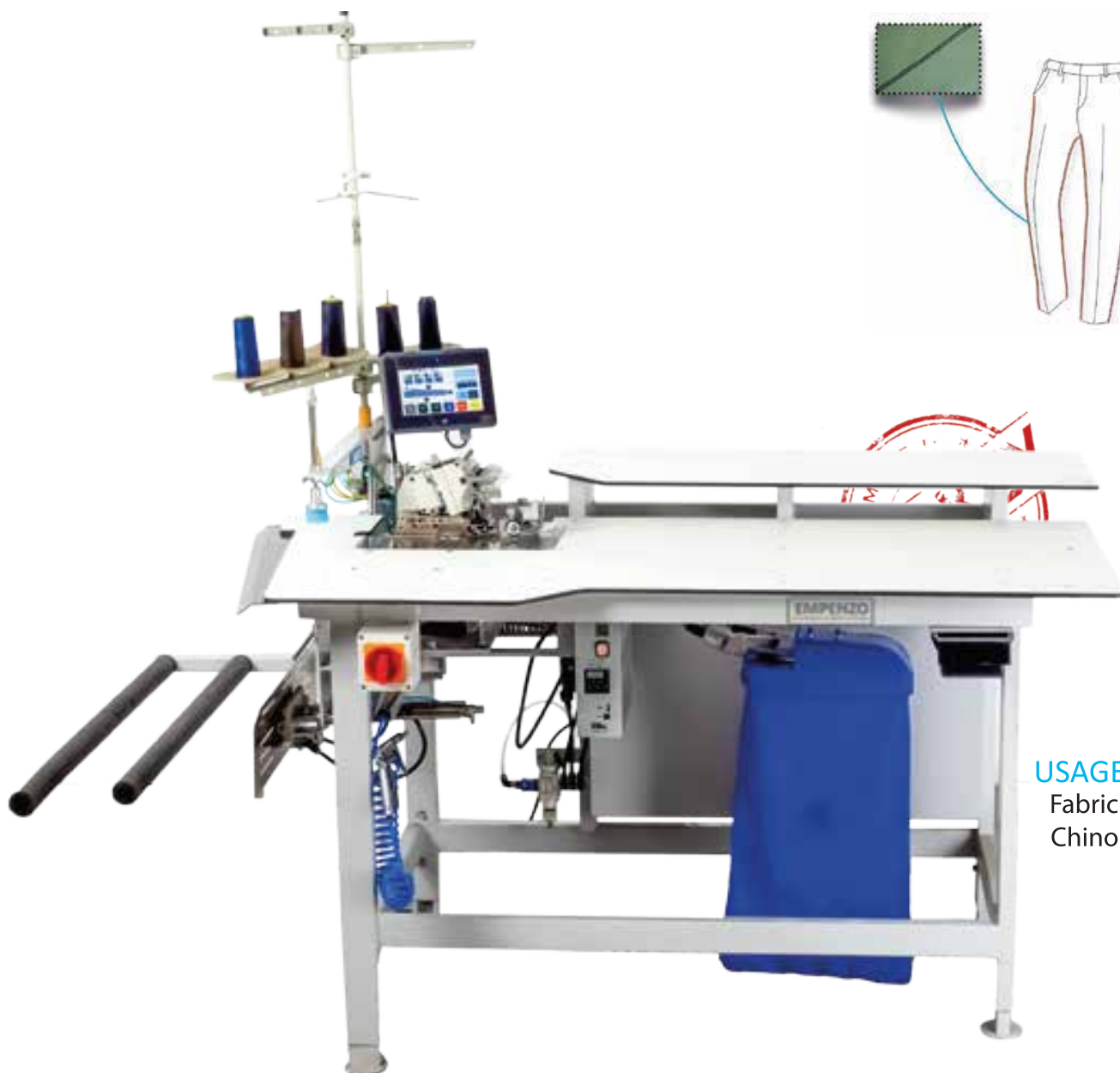
Additional chamber for collecting waste thread

Serial running without waiting

Seamless stitch sewing even in tough fabric

Technical Specifications

Production Capacity	170-250 Pieces/Hours
Max. Sewing Speed	500-7000 Rpm
Max. Stitch Length	1 - 4,5 mm
Connection Voltage	AC 220 V , 50 / 60 Hz
Air Pressure	6 bar



USAGE AREA
Fabric pants
Chino pants



EX5204-02 Pegasus head



Ability to run in a row without stopping



Manual running system

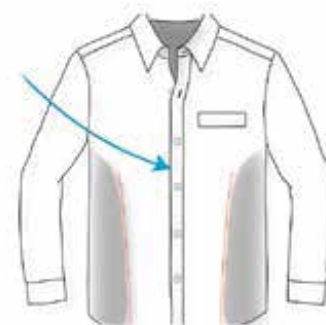


Technical Features

- EX5204 - 02 Pegasus head
- Efka motor AB 221 and driver
- Color graphic display
- Additional chamber for collecting waste thread
- Continuous working without waiting
- Easy maintenance due to special design
- Automatic start at the beginning of sewing due to photocell
- Edge holders that arrange the fabric and provide flawless sewing
- Air units above the tabletop allow the fabric to pass easily to the back

Technical Specifications

Production Capacity	750-850 Pieces/Hours
Max. Sewing Speed	500-7000 Rpm
Max. Stitch Length	1 - 4,5 mm
Connection Voltage	AC 220 V , 50 / 60 Hz
Air Pressure	6 bar



USAGE AREA
Shirt



Brother Direct Drive sewing head



Freely programmable sewing functions



Color Graphic Display



Standard dimensions in sewing lengths with vacuum unit fixing fabrics

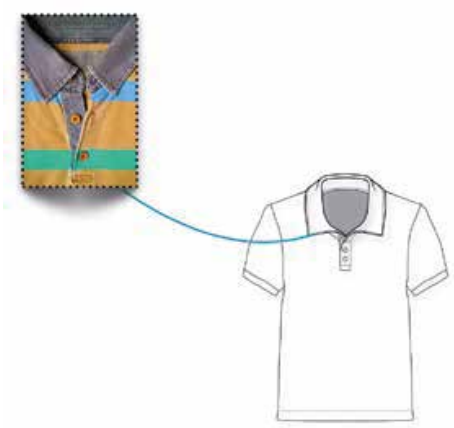


Technical Features

- Brother Direct Drive sewing head (NEXIO 7250 A)
- Color Graphic Display
- Tight stitching and zigzag option from the panel at the beginning and end of sewing
- Stitches without stitch sewing with step control at the beginning and end of sewing
- Easy to understand interface and convenient programming
- Freely programmable sewing functions
- Great seams without experience due to vacuum unit
- Standard dimensions in sewing with fixing fabrics by vacuum unit

Technical Specifications

Production Capacity	800-1000 Pieces/Hours
Max. Sewing Speed	500-4500 Rpm
Max. Stitch Length	1 - 4,5 mm
Connection Voltage	AC 220 V , 50 / 60 Hz
Air Pressure	6 bar



USAGE AREA
Combed cotton



Safety stitching in each program



Knife adjustment from programmable display



Double single knife option



Clear seam quality in corner turns

POLO FLY AUTOMAT WITH AUTO-LOADER



Technical Features

- Brother Direct Drive sewing head (NEXIO 7250 A)
- Color graphic display
- Tight stitching and zigzag option from the panel at the beginning and end of sewing
- Stitches without stitch sewing with step control at the beginning and end of sewing
- Easy to understand interface and convenient programming
- Freely programmable sewing functions
- 30 different sewing patterns working system
- Sewing head that can move left and right with Linear slide system
- Size fly placement laser control system
- Safety sewing system
- Stitch Length 15mm-300mm
- Stitch width 0,1mm-4,5mm

Technical Specifications	
Production Capacity	350-400 Pieces/Hours
Max. Sewing Speed	500-4500 Rpm
Max. Stitch Length	1 - 4,5 mm
Connection Voltage	AC 220 V , 50 / 60 Hz
Air Pressure	6 bar



USAGE AREA
Jeans



Rip



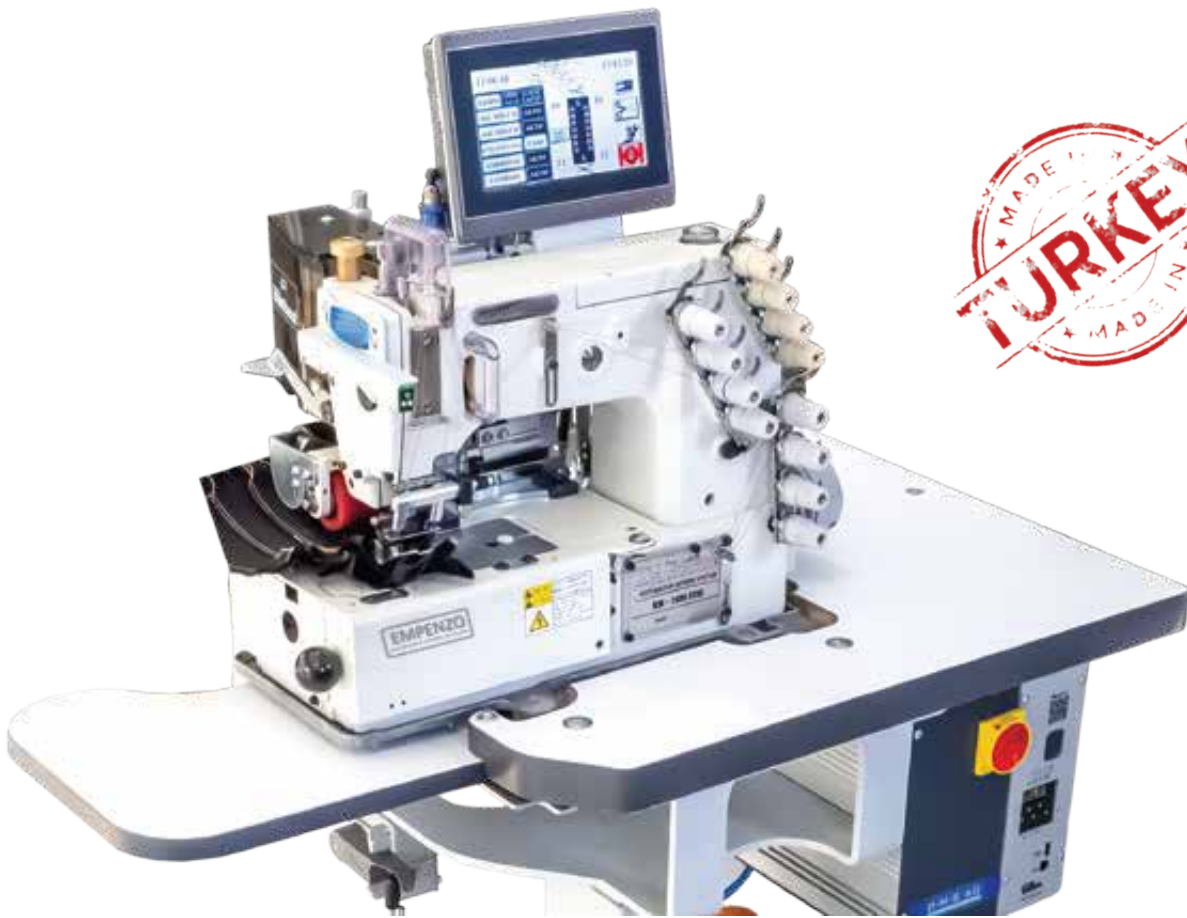
Easy lower roller replacement



Right-Left independent Ripping system



Efka motor AB 321 and driver



Technical Features

KANSAI KM-1509 6 needle machine

Efka motor AB 321 and driver

Automatic left and right skip feature

Photocell control system at the beginning and end of sewing

Knife cutting photocell control system at the beginning and end of sewing

Technical Specifications

Production Capacity	300-400 Pieces/Hours
Max. Sewing Speed	500-2800 Rpm
Max. Stitch Length	1 - 4,5 mm
Connection Voltage	AC 220 V , 50 / 60 Hz
Air Pressure	6 bar



USAGE AREA
Combed cotton



Safety stitching in each program



Knife adjustment from programmable display



Double single knife option



Clear seam quality in corner turns



Technical Features

- Brother Direct Drive sewing head (NEXIO 7250 A)
- Color graphic display
- Tight stitching and zigzag option from the panel at the beginning and end of sewing
- Stitches without stitch sewing with step control at the beginning and end of sewing
- Easy to understand interface and convenient programming
- Freely programmable sewing functions
- 30 different sewing patterns working system
- Sewing head that can move left and right with Linear slide system
- Size fly placement laser control system
- Safety sewing system
- Stitch Length 15mm-300mm
- Stitch width 0,1mm-4,5mm

Technical Specifications

Production Capacity	350-400 Pieces/Hours
Max. Sewing Speed	500-4500 Rpm
Max. Stitch Length	1 - 4,5 mm
Connection Voltage	AC 220 V , 50 / 60 Hz
Air Pressure	6 bar



USAGE AREA
Jeans





Technical Features

- Brother new model feed off the arm (DA-928A-7) machine head
- Efka motor AB321 and driver
- Double roller puller system
- Possibility to work with pallet system without air pressure

Technical Specifications

Production Capacity	
Max. Sewing Speed	500-5500 Rpm
Max. Stitch Length	1 - 4,5 mm
Connection Voltage	AC 220 V , 50 / 60 Hz
Air Pressure	6 bar



USAGE AREA
Jeans



Kansai NL-5800 denim chain
Machine Head



Efka motor AB 221 and driver



Adjustable apparatus system, easy
tying thread



Technical Features

- Kansai NL-5800 jeans chain stitch machine head
- Efka motor AB 221 and driver
- Color graphic display
- Fabric transport system with stepper motor
- High efficiency – High performance
- Adjustable fabric folding system

Technical Specifications	
Production Capacity	
Max. Sewing Speed	500-5500 Rpm
Max. Stitch Length	1 - 4,5 mm
Connection Voltage	AC 220 V , 50 / 60 Hz
Air Pressure	6 bar



SUIT SEWING MACHINE



YOUR RELIABLE PARTNERS

www.empenzo.com



Your Reliable Solution
Partners

Technical Support

+880 177 121 7302



service@empenzo.com

Our Websites



www.empenzosewing.com



sewingspareparts

www.sewingspareparts.com

OUR AGENCY



Singapore Head Quarter
Address : 531 A Upper cross
street # 04-95
Hong Lim Complex
Singapore 051531
Telephone : +65 65 89 86 03
empenzosg@emperzo.com

Turkey Factory
Şeriafali Mahallesi Mevdudi
Sokak No.23
Ümraniye/Istanbul
Telephone : +90 216 420 04 58
+90 216 540 07 64
empenzotr@empenzo.com

Empenzo Bangladesh Liaison
Office Flat # A-1, House # 20
Road # 18, Sector # 3, Uttara
Dhaka-1230, Bangladesh
Telephone : +88 01771 217302
empenzobd@empenzo.com

Empenzo Americas Corp.
12 Daniel Road , Suite 319
Fairfield - New Jerse
07004 USA
Tel : +1 (973) 850-96 55
empenzousa@empenzo.com

www.empenzo.com

empenzo@empenzo.com