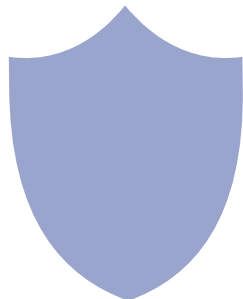
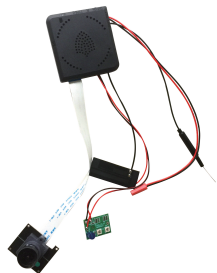


HD1080P Easy DIY 4G Wi-Fi Security Camera

User Manual
Version: May, 2023



Size: 10 x 40 x 200mm



1

Secondly, it supports motion detection, push alarm notifications, cycle recording and work while charging. Default with a 1500ma battery.

Finally, its compact size makes it easy to be installed into any daily objects (even a cookie box) for DIY home & business surveillance purposes.

Usages: Nanny camera, home/ shop/ office/ warehouse surveillance camera.....

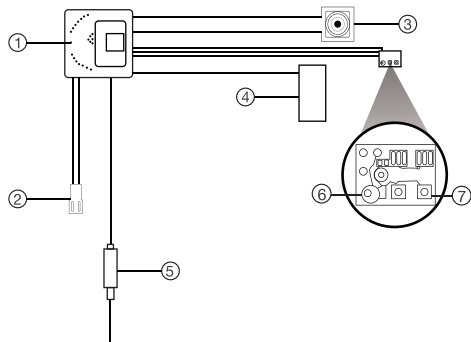
Warning: " illegal use is not allowed! Or, there will be consequences to bear! "

In the box:

- 1 x Wi-Fi Camera
- 1 x USB Cable
- 1 x User Manual
- 1 x Micro SD Card Reader
- 1 x 1500mAh Battery(Default)

4

Product structure:



- ① Wi-Fi indicator
- ② Port for Battery
- ③ Camera
- ④ ANT 1 (4G Antenna)
- ⑤ ANT 2 (Wi-Fi Antenna)
- ⑥ Light sensor
- ⑦ Invisible night vision leds

5

Quick guide of Wi-Fi camera function:

1.Download Free App <TinyCam Pro> from App Store or Google Play.

Tips:Please allow "TinyCam Pro" to access smartphone location while using the APP.

2.Insert a SIM card (ensure the SIM card is functioning properly) and a memory card into the side card slots firstly--> Plug in power adapter -->Turn on ON/OFF switch ,wait till the blue indicator turns from solid to blink.

Tips: ①.Pls pay attention to the SIM card and memory card direction according to the small sim card icon and memory card icon on the device's housing.

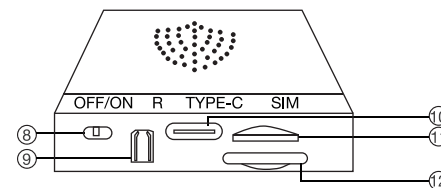
②.Ensure two cards well inserted to the end of the card slot. Or, there might be abnormal status.

3.Enter TinyCam Pro App, tap below "+" icon-->Add QR code--> Scan the QR code on the device-->Enter default password 123456 -->The blue indicator always on (successfully connected to the network)-->Camera online then;

Tips: ①.If failed, the blue indicator keeps blinking slowly . Please check if the card is functioning properly, or if it is well inserted.

②.If you wanna use device with Wi-Fi, then please check point 4 for further setting.

2



- ⑧ OFF/ON Switch
- ⑨ Reset Key
- ⑩ Type-C charging port
- ⑪ SIM card slot
- ⑫ Micro SD card slot

6

4.Press ⚙️ icon on the right corner of camera--> WiFi Config -->Select local Wi-Fi--> Input the Wi-Fi password--> Tap Next -->Green indicator always on.

Tips: ①.After the Wi-Fi binding is successful, the SIM camera can also be used normally based on the connected Wi-Fi and the SIM card can also be removed.

②.If you wanna to use it again based on SIM card, pls reset the device firstly. While device is being reset, the blue indicator will blink fast.

Overview:

The HD1080P Easy DIY 4G Wi-Fi Security Camera is a revolutionary new product that combines the reliability of traditional security cameras with the flexibility of modern mobile technology. With the option to insert a SIM card, this camera can connect to a 4G network and it can also be bound to a Wi-Fi network, allowing for even more customization and control.

First, it can be used to watch live video day and night (invisible night vision around 5 meters),and remotely take photos and videos through a phone app after SIM card or Wi-Fi connected.

3

Wi-Fi Camera Connection Setting

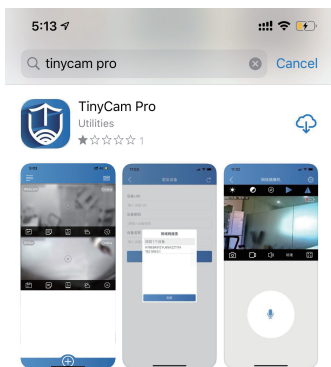
Step1: Download and install APP

Scan below QR code or search and download free APP named <TinyCam Pro> in Apple APP store, Google play or Electronic market, and install it;

Tips:Please allow "TinyCam Pro" to access your location while you are using the app(for syncing local weather info).



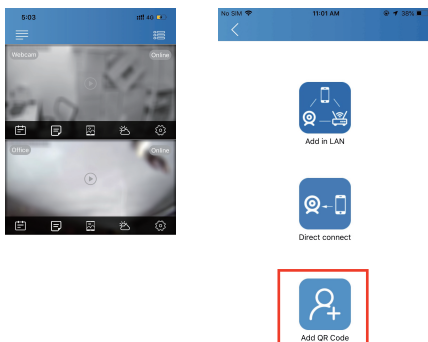
7



8

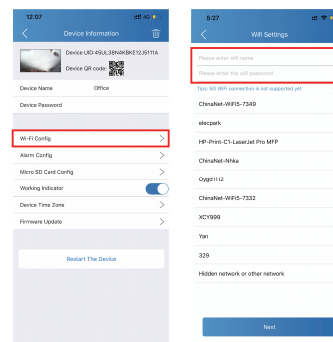
Step 2: Insert a SIM card (ensure the SIM card is functioning properly) and a memory card into the side card slots firstly--> Plug in power adapter -->Turn on ON/OFF switch ,wait till the blue indicator turns from solid to blink.

Step 3: Enter TinyCam Pro App, tap below "+" icon-->Add QR code -->Scan the QR code on the device-->Enter default password 123456-->The blue indicator always on (successfully connected to the network)-->Camera online then;



9

Step 4:After the Wi-Fi binding is successful, the SIM camera can also be used normally based on the connected Wi-Fi and the SIM card can also be removed.



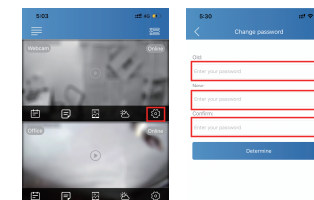
Tips: After the Wi-Fi binding is successful, the SIM camera can also be used normally when removed.

10

Set camera name and private code

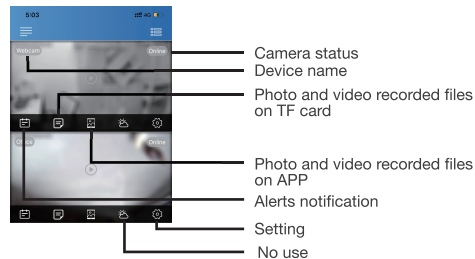
Set name:Tap the ⚙️ after the camera, Input a new name(like Office ...)

Set new password: Tap the ⚙️ after the camera, Tap Device Password --> Old password = 123456.



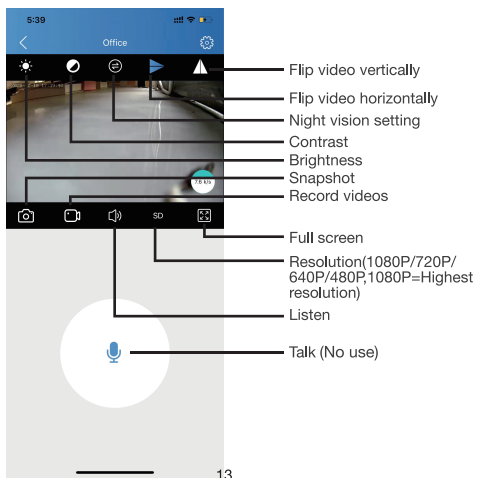
11

APP introduction:

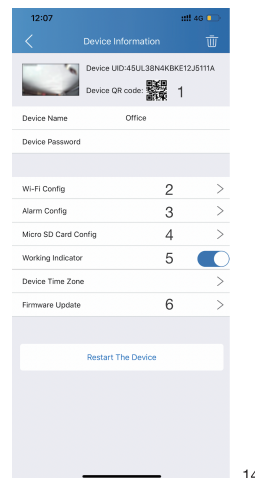


- Tips: 1. Please confirm phone setting has allowed TinyCam Pro App to access the location services;
2. A TF card(Micro SD card) must be inserted for saving alerts pictures.

12



13



14

1. Share camera with others by QR code
2. Wi-Fi Config: Set camera to connect to local Wi-Fi
3. Alarm Config: Set motion detection sensitivity
4. Micro SD Card Record Config: Set SD card recordmode / Resolution /File length...
5. Working Indicator: To turn on/off device's working led
6. Firmware Update: Update device's latest firmware by app

Specification

Resolution	2Mega CMOS
Video pixel in phone	Max 1920*1080
Video pixel in card	1080*720
Frames	Max 25fps
Compressed format	H.264
View angle	145 Degree
Type of memory card	TF card>=Class 4/10 and HC marked
Maximum capacity of memory card	128GB
PC operation system	Windows 7, 8 / Mac OS X
Play software	VLCPayer/SMPlayer
Mobile phone operation system	Android/iOS
Web browser	IE7 and above,chrome,firefox
Power consumption	300MA/3.7V
Battery Capacity	Rechargeable 1500 mA
Recording	1 minute/ around 20MB
Working time in day time	Around 4-5 hours
Working time in night time	Around 2-3 hours
Charging time	3-4 hours
Power adapter	5V / 2A

15

FAQ

- 1.Q: What steps need to be done before the set up operation?
A:1). Pls pay attention to the SIM card and memory card direction according to the small sim card icon and memory card icon on the device's housing.
2). Ensure two cards well inserted to the end of the card slot. Or, there might be abnormal status.
- 2.Q: If the setup of the SIM card camera is failed, how to solve the issue?
A:1). If failed, the blue indicator keeps blinking slowly . Please check if the card is functioning properly, or if it is well inserted.
2). If it still fails, pls reset the device,while device is being reset, the blue indicator will blink fast.
- 3.Q: How to use the device with SIM card again after device connnected with Wi-Fi?
A: If you wanna to use it again based on SIM card, pls reset the device firstly.
- 4.Q: Live video not smooth and clear?
A: Select suitable resolution according to the real time network environment.

16

5. Q: Motion detect set and alarm?
A: 1). Set motion detect sensitivity in App Setting > Alarm Config;
2). When motion detected, camera will push a alarm message to your phone and take one picture for checking in the APP [Page 12 - Alert notification]. (A micro sd card MUST be inserted for saving alarm pictures)
6. Q: Micro SD card instruction?
A: 1). Format card before inserting;
2). Once device is connected to Wi-Fi, can set SD management in App Setting > Micro SD Card Config.
7. Q: How to play micro SD card video?
A: 1). Use a card reader to read and play;
2). Use APP to play back [Page 12 - Photo and video recorded files on TF card.
3). Play back in good speed network.
8. Q: Forget camera password, or item goes abnormal?
A: Turn on camera and wait for 1 minute, press reset key around 10 seconds till back indicators off to restore factory default. Camera restarts and get ready again in 1 minute.

17

9. Q: Any operation video demo of the camera for setting up?
A: Please contact local dealer for video guide.

18



The end!