
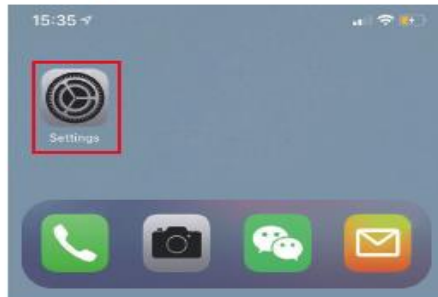


Setup for 1080P HD DIY Pinhole Camera

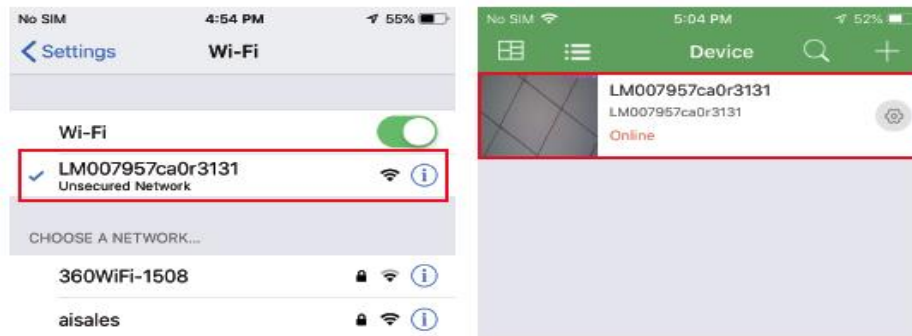
Step1: Download and install APP

Search and download free APP named “HDSmartIPC” in Apple APP store, Google play or Electronic market, and install it.

1. Open smartphone settings, search and connect the device's wireless signal named "AI/LM.....”,wait Wi-Fi connected, and phone status bar appear Wi-Fi  symbol.




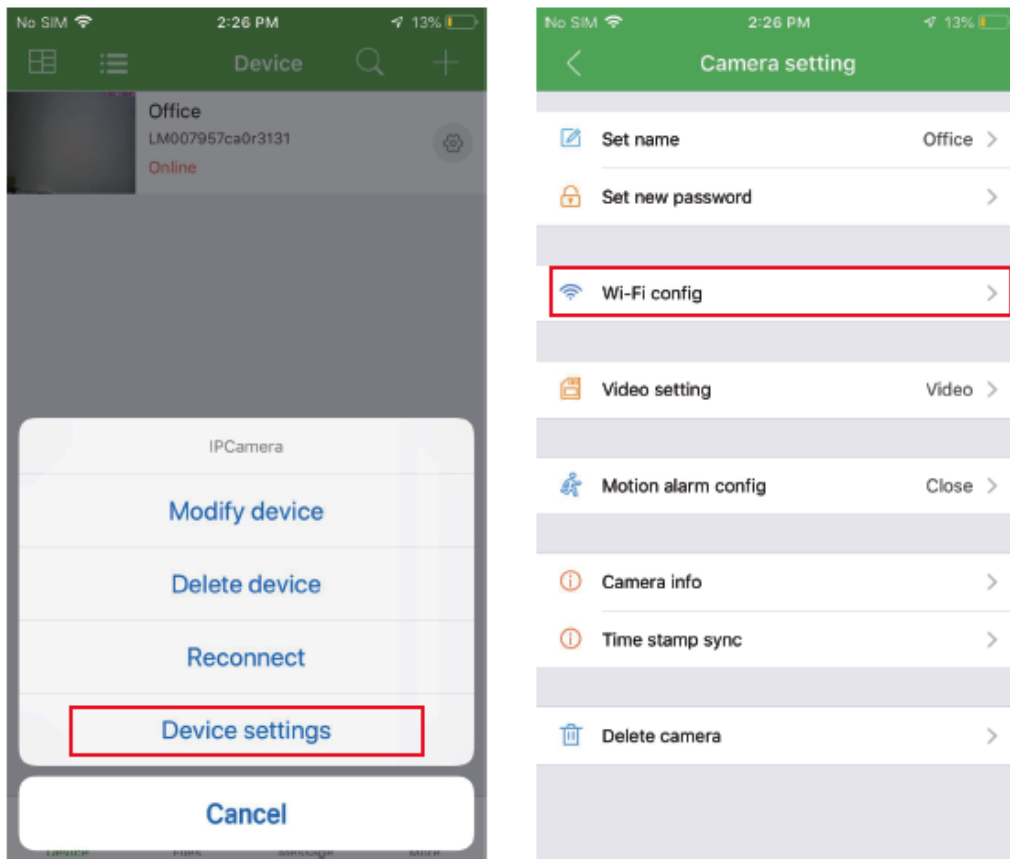
2. Enter APP, app will add just connected camera automatically, Camera Online then;



TIPS: This step = P2P mode, can check video locally when without Wi-Fi.



3. Press the gear icon  after the camera and select Device settings ,select Wi-Fi Config.



connected to the router Wi-Fi. The smartphone will disconnect the signal from device and connect to the router Wi-Fi.

5. Quit APP, and device restart automatically and ready again in 30 seconds.

6. Enter APP and check live video locally or remotely anywhere.

