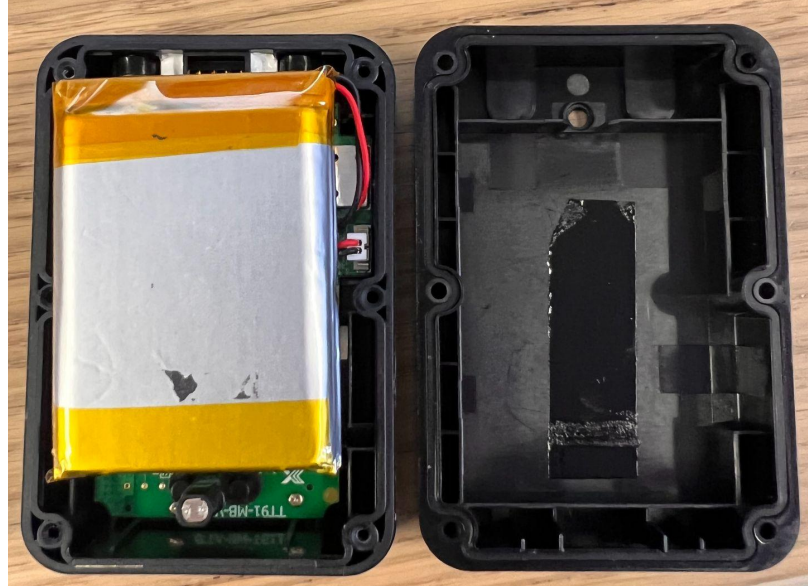


# POST CONFIGURATION - 4G Rugged Asset Tracker

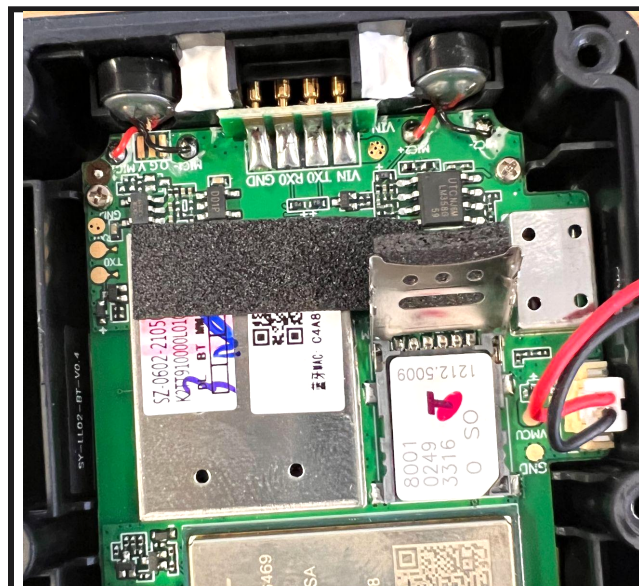


Thanks for doing business with us, please follow the following steps to finalize the setup:

1. Active the sim card on a prepaid or postpaid **mobile plan** of your choice that can take **calls and text**, with at least 2-3 GB Data per month.
2. Unscrew the diagonal screws using the screwdriver in the package. Being a hexagonal back end of the screwdriver it can be unscrewed or tightened using the electric screwdriver as well.

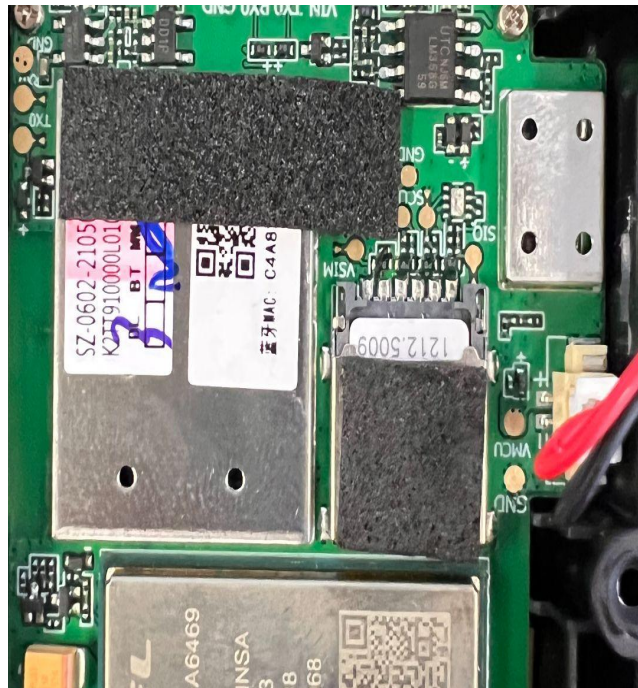


3. Slide the black top insulator of the sim card holder backwards to slide open
4. Install the micro Size Sim card in the sim tray by placing it with the cut edge of the sim card facing towards the QR-Code on the trackers circuit board



## POST CONFIGURATION - 4G Rugged Asset Tracker

5. Lock the sim card holder by sliding it forward to lock the sim card in the tracker
6. Make sure that the battery cable do not run over the circuit



7. Check the battery cable connector connected properly
8. Press hold the button on the top of the tracker for 2 seconds till you see all three lights glowing , this shows that the sim card and tracker are ready to setup
9. Send an sms command to the tracker when the sim card is inserted : eg :  
**For Telstra : apn,telstra.internet#**  
**Optus : apn,connect#**  
**Vodafone : apn,vfinternet#**  
**The tracker will respond back as apn set OK!**
10. Download the Tracksolid Pro App from the App or Play Store.
11. Create your account or Login to your existing account
12. Navigate to 'Devices' and select the + button in the top right corner, using the IMEI on the underside of the device to register your tracker.
13. If you cannot find the + button from step 5, navigate to the Tracksolid Pro website <https://tracksolidpro.com/mainFrame> and login, select DEVICE at the top and the 'Bind Device' option. Enter your IMEI and the tracker will be visible from both web and app account or by scanning the QR-Code from corner of the tracker
14. Now your SIM is installed and your tracker is on your account, you're good to go!
15. Close the tracker by screw tightening all 6 screws on the tracker

## POST CONFIGURATION - 4G Rugged Asset Tracker



16. The blinking green red and blue lights on the tracker indicate that the tracker is ready to be used and functional to track!

If you'd like to view your tracker from your PC device, you can navigate and login at:  
<https://tracksolidpro.com/mainFrame>