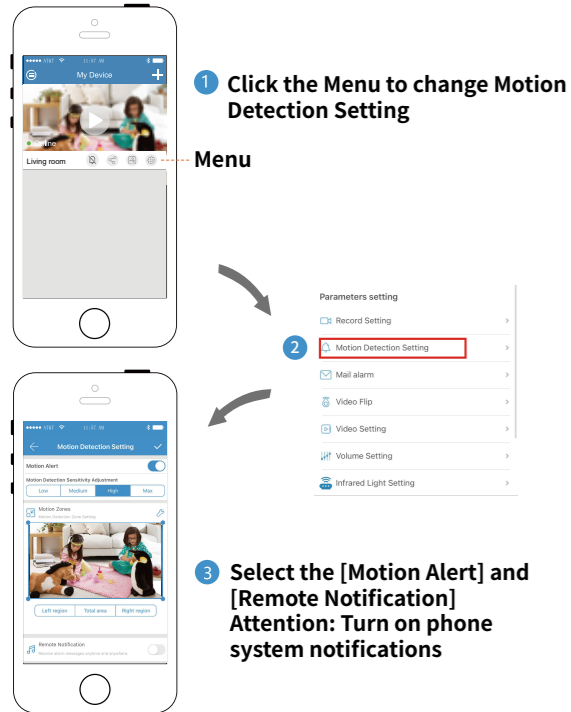
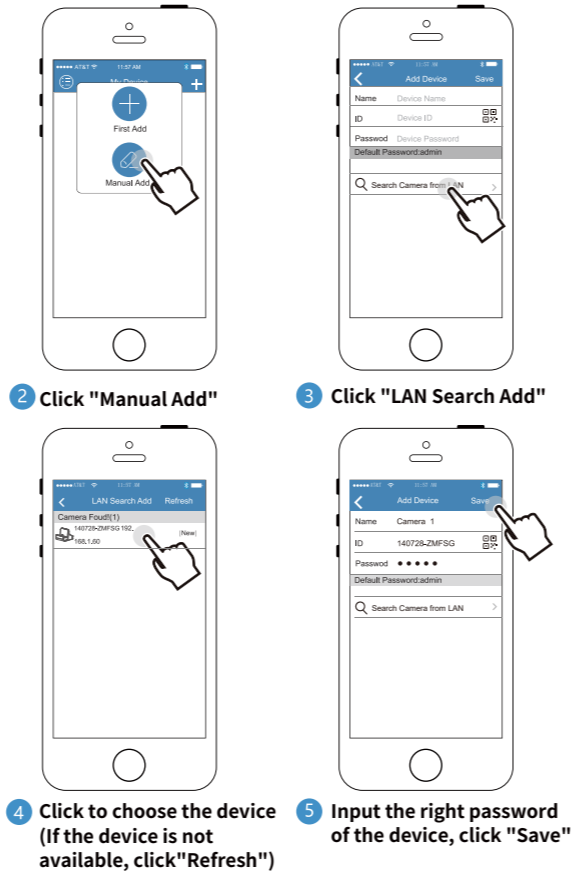


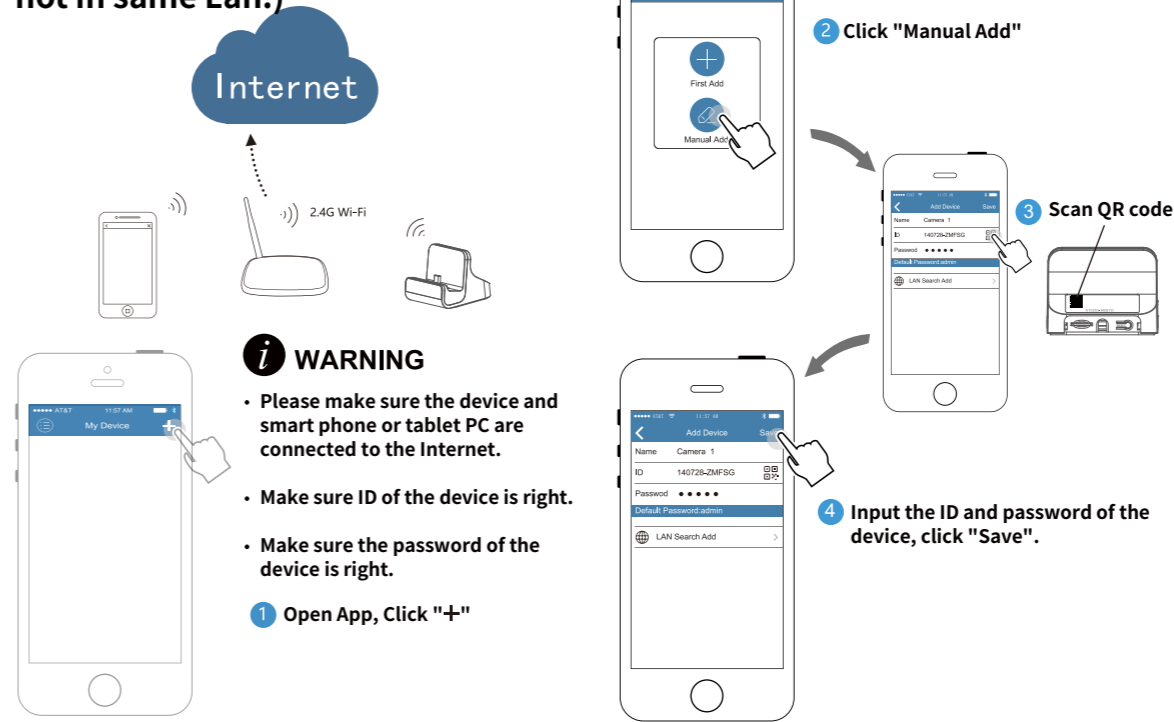
## 20. Motion Detection setting



## 21. More user in same device, (add more users in same Lan)



## 22. More user in same device, (The device and smart phone are not in same Lan.)



### **i WARNING**

- In order to make sure the device works normally, please don't use any non-matched adapter. (nominal output DC 5V 1.5A)
- After the device started, if the red LED indicator does not blink, please reset the device to factory default setting.
- Press [ RESET ] button and hold 5 seconds, when the blue LED indicator is solid, release the button, then the device is reset to factory default setting.

### How to insert TF card

