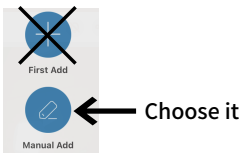
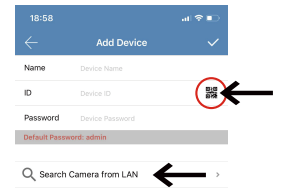


9. You must choose 'Manual add' then

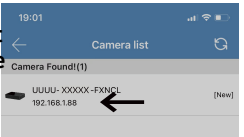


10. Search camera from LAN Or click code to scan the QR code on product

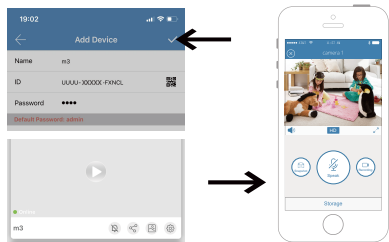


11. Camera will be found, if not, press there fresh button . Click on the found camera.

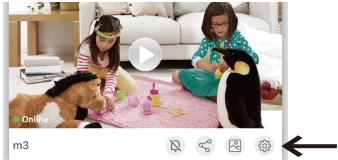
Some Android devices may not find the camera, please see the Troubleshoot Guide Android device problems



12. Give it a name and click on the check mark, the app will ask you to change the PW, please "Ignore" for now.



13. Click on the setup icon

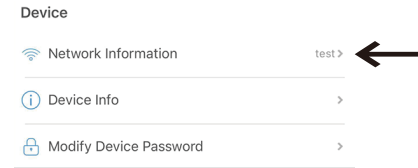


WARNING
Now you need to complete steps 14-17 to connect the camera to your Wifi network, or it cannot perform remote monitoring.

14. This message may appear, stay on Wi-Fi.

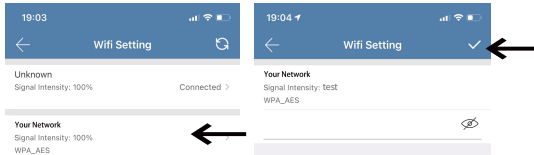


15. How to configure wifi with router



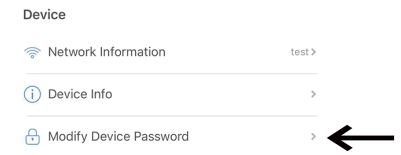
16. Choose network, Input your WiFi PW and hit yes

(2.4GHZ only , 5GHZ is not supported) Press the refresh button if necessary



17. Select modify device password

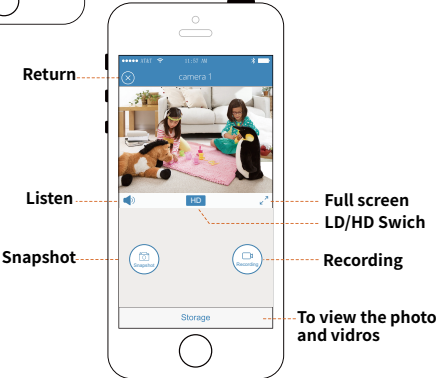
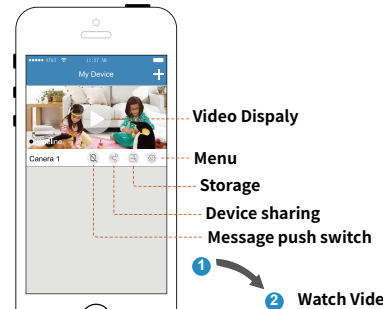
Default password: **admin**
If you forget your password , please reset the device (Does not affect the data of the SD card)



WARNING

The set-up is done. If done correctly, the camera will be 'Online' after about 30sec , also the red LED light will turn solid. If it fails, it's most likely due to the wrong WiFi PW at step #7. If your WiFi PW contains any special characters, please change to Alphanumeric only.

18. Watch Video



If the live video is frozen , please close it and open again . If it is still frozen, please power off and restart the device and the Wifi router , and keep the device and the Wifi router within 3m to configure again

19. How to adjust image quality

