

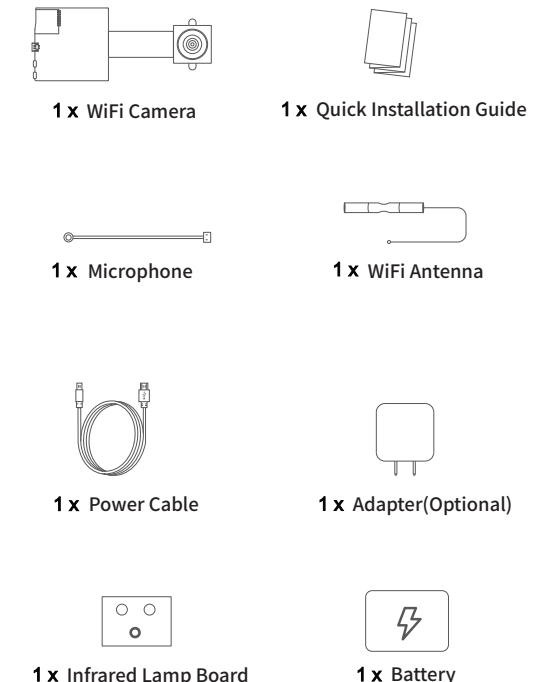
Quick Installation Guide

DIY Mini WiFi Camera

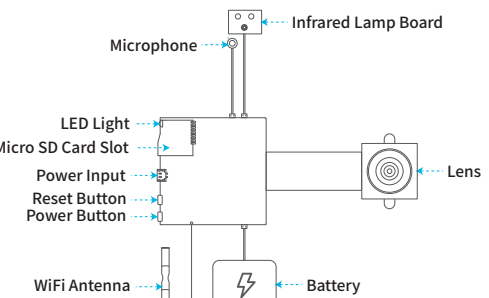
REV2.0

1. Packing List

Open the package, then make sure the WiFi Camera(device) is intact, and with all the below accessories.

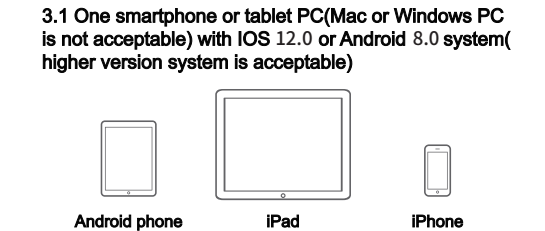


2.Product Diagram



3.Preparation

Please prepare the below stuff before you use it.



3.2 Wi-Fi Router



- Device can only connect to 2.4Ghz Wi-Fi router.
- Make sure turn on the DHCP of router, and MAC address should be off.
- Distance between the router and the device should be within 3 mtrs during configuration.
- Please don't use special character such as Chinese, symbol to name the WiFi.
- Please don't use special character such as Chinese, symbol as the password for the WiFi and Wi-Fi password can not be blank.

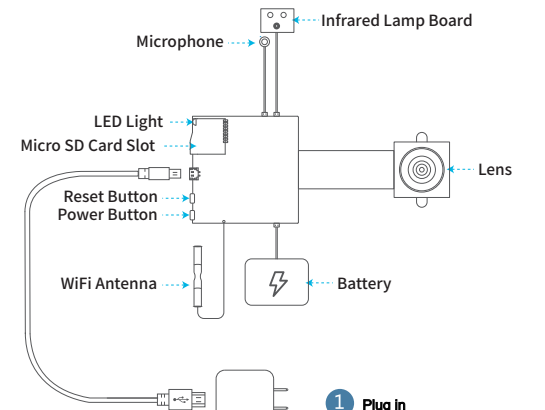
3.3 Install "IOTLiving" App

- Search "IOTLiving" App from Apple Store or Google Play, then download.
- Scan the QR Code below and install the App.



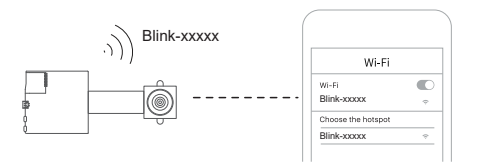
4. Operation Instruction

LED Light State Introductions
 Light off: Wi-Fi no connection
 Light solid: Wi-Fi connected
 Light blink: Waiting connect to Wi-Fi



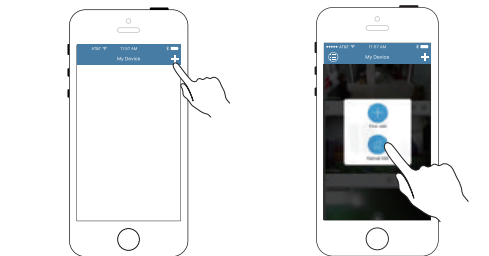
1 Plug in

5.Configure Device



1 Mobile Phone Setting WLAN (WiFi)

Notice Password:0123456789



2 Open the App click "+" 3 Click "Manual Add"

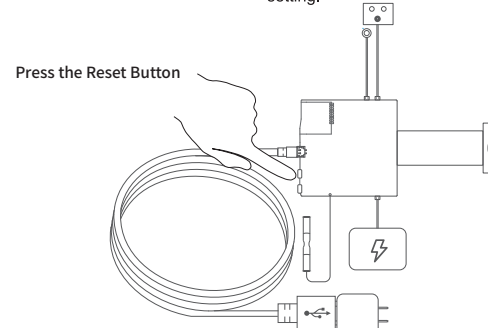
4. Operation Instruction



4 Click Search Camera from LAN

Notice

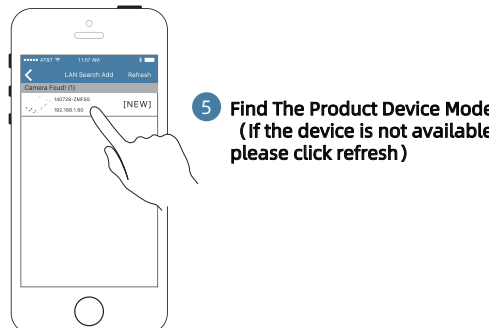
- If the LED indicator does not blink, press [RESET] button and hold 5 seconds, until the LED indicator is solid, release the button and the device is reset to factory default setting.



Press the Reset Button

The default pass word is : admin

5.Configure Device

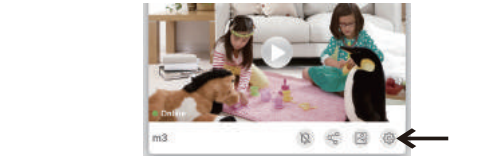


5 Find The Product Device Model (If the device is not available, please click refresh)

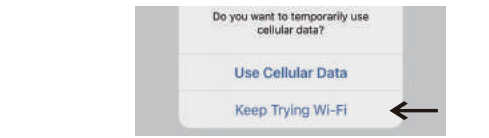


6 Input the right pass word of the device click " Save" or "✓"

6.Click on the setup icon



7.This message may appear stay on Wi-Fi.

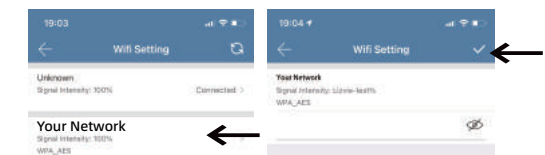


8.How to configure wifi with router



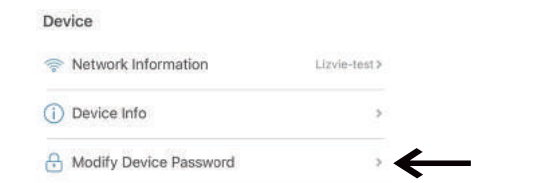
9.Choose network,Input yo-ur WiFi PW and hit yes

(2.4GHZ only , 5GHZ is not supported) Press the refresh button if necessary

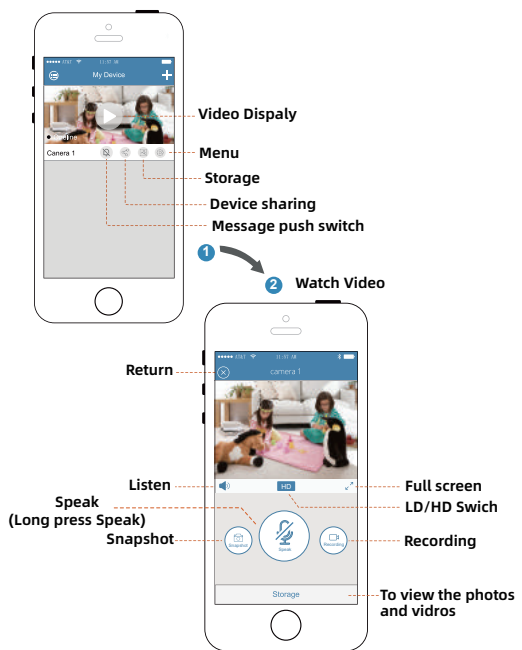


10.Select modify device pas- sword

Default password: admin If you forget your password , please reset the device (Does not affect the data of the SD card)

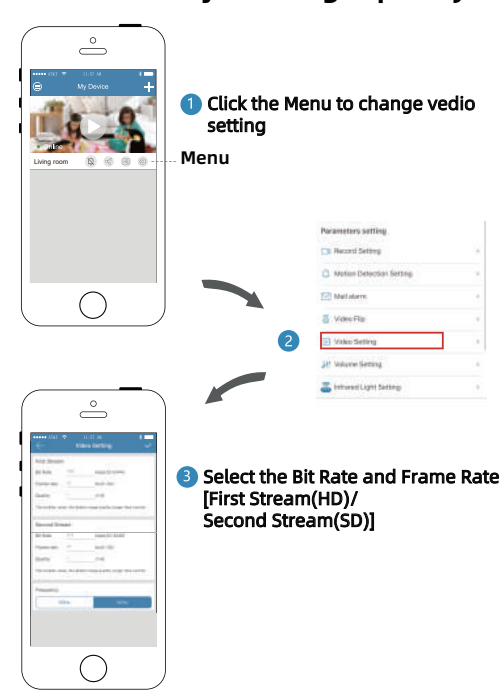


11. Watch Video

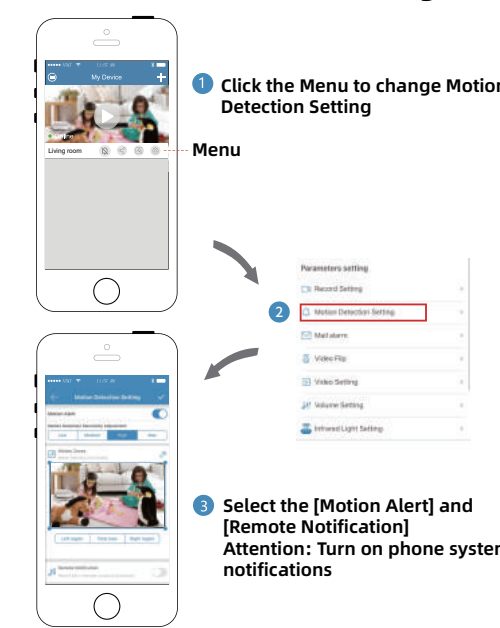


If the live video is frozen, please close it and open again. If it is still frozen, please power off and restart the device and the Wifi router, and keep the device and the Wifi router within 3m to configure again

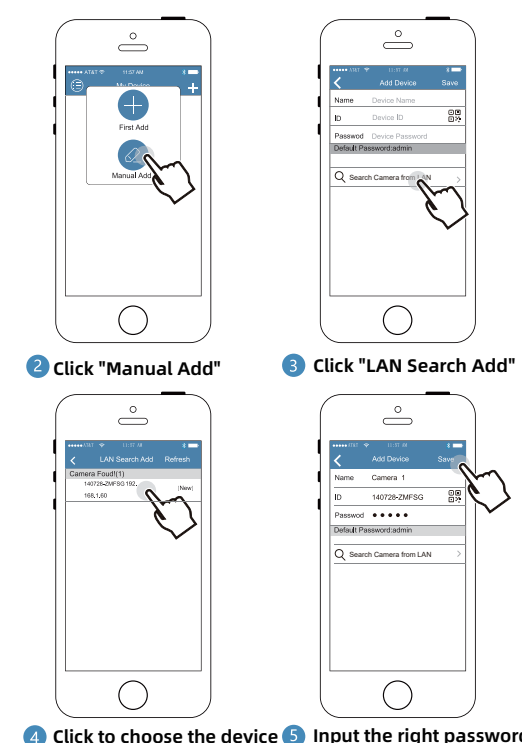
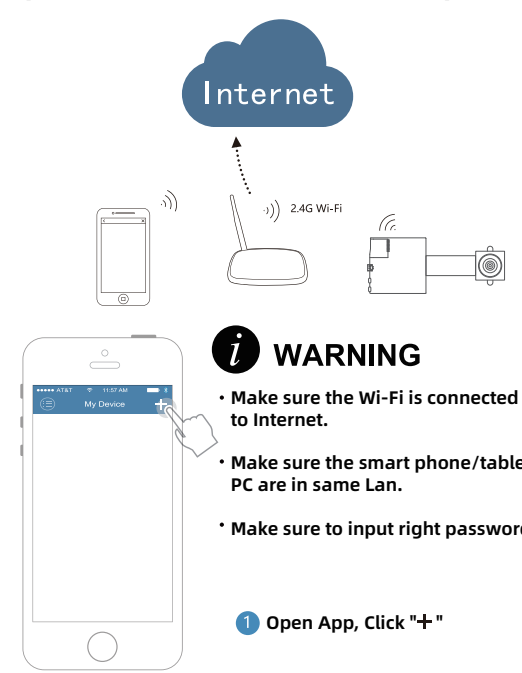
12. How to adjust image quality



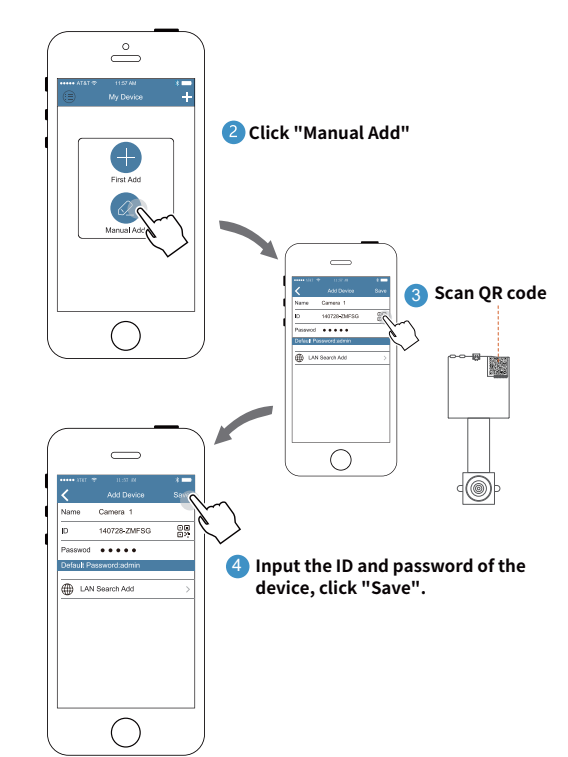
13. Motion Detection setting



14. More user in same device, (add more users in same Lan)

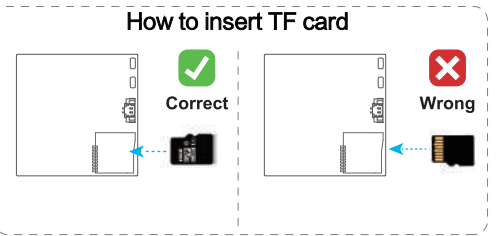


15. More user in same device, (The device and smart phone are not in same Lan.)



WARNING

- To make sure the device work normally, please use the adapter DC 5V/ DC 12V, 1.5~2A.
- After the device started, if the LED indicator does not blink, please reset the device to factory default setting.
- Press [RESET] button and hold 5 seconds, then release it and wait about 40s, the LED indicator starts blinking, and the device is reset to factory default setting.



FAQ

Q: How to use the windows system to view the content of the 264 file of the SD card?

>Consult the technical consultant on the app or the customer service mailbox in the product package, we will send **H264 To AVI Converter** and convert the file format according to the prompt of the file to view the video content.

Q: How to view and download the contents of SD card using mac system?

>Consult the technical consultant on the app or the customer service email in the product package, we will send a software package, install and connect the software according to the software package to view the video content.

Q: If my network is not good and I don't want to view it remotely through my phone, I just want to record video, what should I do?

> If the device is not connected to the Internet, you will not be able to view it in real time on the phone, but you can view the recorded content through the SD card. The specific operations are as follows: Reset the device->Refer to the steps for connecting the mobile phone to the device->Settings->Record Setting->Full Time

FAQ

Q: Should I have to plugged the USB power all the time?

> Yes, because there is no battery, please plug in the power all the time.

Q: How many users can watch the video the same time?

> 5 persons maximum.

Q: Whether device supports ONVIF?

> Yes, it is standard.

Q: How many cameras does the App holds at the same time?

> To make sure the App works well please do not connect over 10 cameras.

Q: Can I record the live video into my phone?

> Yes, the manually record will saved into your phone. But the auto record will saved into the SD card.

Q: Whether device supports SD video recording?

> Yes, up to 64G Micro-SD card.

Q: How long does my SD card can record ?

> If your camera is running Full Time recording, one 32G SD card can record about 4 days. If the SD card is no space for new video, it will erase the oldest video to save the newest.

FAQ

Q: What is the format of the video recording on the Micro-SD card?

> AVI, H.264 and most of the main media player format.

Q: How to use smart phone to watch the SD card recording?

> Press the APP, press the local recording-> "SD", then you can watch the video recording.

Q: Can I turn off the Night Vision?

> Yes, Open App--Enter the view screen--click the Gear icon --Click the Infrared Light setting--Select OFF.

Q: Why system prompt that wireless charger camera is offline after added?

> Please click software "reconnect" or check whether the wireless charger camera power supply and the network connection is OK.

Q: Why stuck and time-lag situation happens sometimes when watching the video?

> Please check your network connection or set up video quality to "low" pattern under advanced setting.

FAQ

Q: What can I do if I forgot the wireless charger camera password?

> Press [RST/SET] button on the unit and hold 5 seconds at least, the device will be reset to the factory default setting in about 40 seconds.

For more questions, please open App and click "FAQ"



1 Open the App, then click "My Device"



2 Click "FAQ" enter FAQ

About the User Manual:

The user manual is used as a guide.

The photos, graphic, charts and illustrations provided in the user Manual are only used to explanation and interpretation, which may be different from specific products, please refer to the real object.

The user manual maybe updated because of the products version upgrade or other requirements, if you need the latest version of the user manual, please contact customer service for the latest version of the user manual.