

FABRICS

DILLON

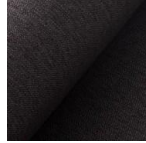
GRADE 10

100% Polyester

Cleaning Code: S

Martindale: 40,000 cycles

Smooth feel with slight sheen resulting in textural depth.



BLACK SAND

POLO

GRADE 10

100% Polyester

Cleaning Code: W

Wyzenbeek: 30,000 cycles

High performance construction and weave.

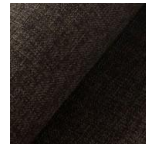


CREAM



GREY

Last Order Date Jan 23



SLATE

ARCTIC

GRADE 10

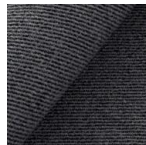
100% Polyester

Cleaning Code: WS

Martindale: 40,000 cycles

Features a tight diagonal twill.

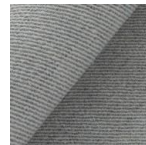
Performance finish: C0, water repellency



COAL



SNOW



WOLF



PEBBLE

SELBY

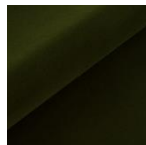
GRADE 10

100% Polyester

Cleaning Code: WS

Martindale*: 60,000 cycles

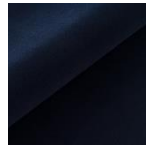
Reminiscent of a true velvet, with luxurious look and feel. Incredibly durable, the construction allows the yarns to reflect light in many shades, creating an inherently dynamic surface.



MOSS



CAMEL



NAVY



STEEL



ICE
Coming Soon



AVOCADO
Coming Soon

KEY LARGO

GRADE 20

100% Polyester

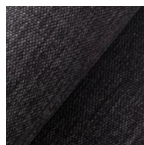
Cleaning Code: W

Wyzenbeek: 40,000 cycles

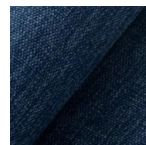
High performance construction and weave.



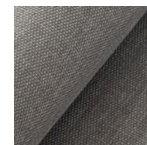
ALMOND



ANTHRACITE



DENIM



SMOKE



TEAL

FABRICS

MILA

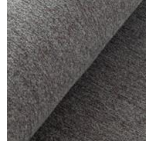
GRADE 20

100% Polyester

Cleaning Code: W

Wyzenbeek: 20,000 cycles

Mila has a soft feel that resembles the texture of woven wool, while maintaining a high-performance construction and weave from the inclusion of synthetic yarns.



GREY



SILVER

VALLEY

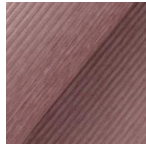
GRADE 20

100% Polyester

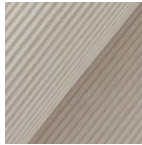
Cleaning Code: WS

Martindale: 35,000 cycles

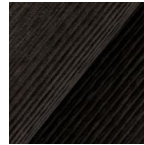
Features a dobby weave, with corduroy look and feel.



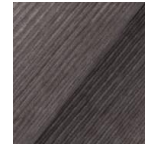
BLOSSOM



CREAM



EARTH



STONE

PANAMA

GRADE 20

100% Polyester

Cleaning Code: D

Martindale: 40,000 cycles

Using a high-performance basket-weave construction, Panama combines two unique colours on the weft and warp.



ANTHRACITE



GREEN



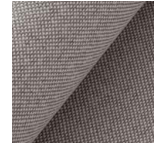
GREY



LIGHT BLUE



NATURAL



ZINC

AVA

GRADE 30

100% Polyester

Cleaning Code: WS

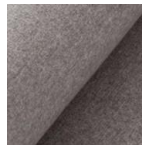
Martindale*: 100,000 cycles

High Abrasion Resistance

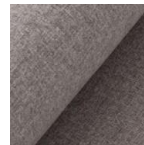
Composed of a mix of natural and synthetic yarns. It is soft to the touch, resembling the texture of woven wool.



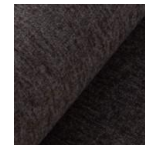
CAMEL



CLOUD



HAZE



PEPPER

CEDER

GRADE 30

52% Viscose, 25% Polyester,
15% Linen, 8% Cotton

Cleaning Code: S

Martindale: 35,000 cycles

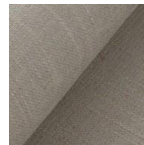
Soft chenille featuring a viscose "silk" look.



BURNT ORANGE



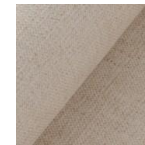
BURNT YELLOW



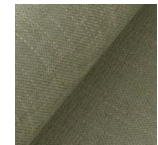
LIGHT GREY



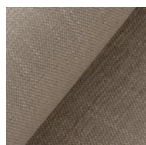
MEDIUM GREY



OATMEAL



SOFT GREEN



TAUPE



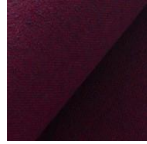
YELLOW

FABRICS

JET

GRADE 30
100% Polyester -Trevira Cs
Cleaning Code: W
Martindale*: 40,000 cycles

A classic micro basket weave that achieves a intriguing colour depth by mixing two colours on the weft and warp. A commercial-grade fabric, Jet is inherently flame retardant.



BLOOM



GRASS



LEAF

Last Order Date Jan 30



SHADE

OLA

GRADE 30
100% Recycled Olefin
Cleaning Code: W
Martindale*: 75,000 cycles
High Abrasion Resistance

Woven in Turkey by old world artisans, featuring an appealing woolen texture. Olefin yarn is naturally stain-resistant.



ASH



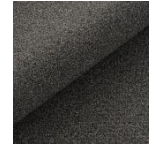
SAND



FOREST



DENIM



DARK GREY

MALLOW

GRADE 30
100% Cotton
Cleaning Code: WS +Machine-washable
Martindale*: <40,000cycles

Heavier weight oxford cloth. A true crisp white, with dreamlike softness.



WHITE

+Machine-washable,
Loose Cushion Care [W]:
EQ3 has tested Mallow White under AATCC Test Method 135-2018 standards.
Loose cushion covers can be removed and washed if desired; Wash in cold water and air dry only.
For best results, select a water-based solvent tailored to the type of spill on cotton.
Whenever a washing machine is used, use only a water-based solvent.
Attached Cushion/Upholstered Care [S]:
Solvent-based cleaner is most effective on spot-cleans, on unremovable areas of the cover.
Solvent-based cleaners should not be machine-washed.

VITORIA

GRADE 30
100% Polyester
Cleaning Code: W
Martindale: >40,000 cycles

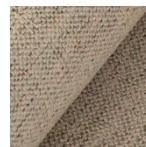
A chenille, the fluffy yarn used in its weaving process results in extraordinary softness. The use of unconventional coloured yarns interwoven with neutrals in a dynamic surface and colour.



BASALT



GRANITE

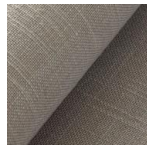


MICA

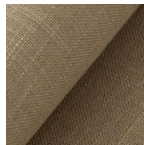
ASPEN

GRADE 40
52% Rayon, 22% Linen, 15% Polyester,
11% cotton
Cleaning Code: S
Martindale*: 40,000 cycles

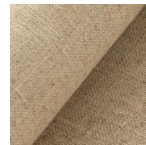
Aspen resembles the natural beauty of linen textiles. The irregularities in the weaving are called "slubs," enhancing the textural complexity of the fabric. The fabric softens its hand overtime, a characteristic of linen.



DUSK



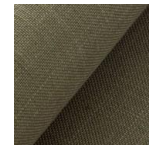
FLAX



PEBBLE



MIST



SAGE

FABRICS

LEE

GRADE 40

90% Polyester, 8% Acrylic, 2% Wool

Cleaning Code: S

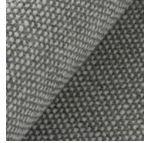
Martindale: 40,000 cycles

A plain weave that boasts texture.

Performance Finish: No. All 2023 orders are uncoated. C6, water and oil repellency was on limited orders in 2021-22.



COTTON



DOVE



FLAX



SILVER

HERRINGBONE

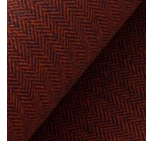
GRADE 40

100% Polyester—Trevira Cs

Cleaning Code: W

Martindale*: 40,000 cycles

Herringbone is a classic textile weaving technique also referred to as "broken twill." The use of patterns like herringbone is a great way to create textural depth in a room.



CORAL



JELLY

Last Order Date Jan 31

LINEN

GRADE 40

100% Linen

Cleaning Code: S

Martindale: 12,000 cycles

Linen uses two tones of 100% Belgian linen flax in its basket-weave construction, highlighting the natural beauty of linen textiles.

Available on slipcover frames only (such as Cello Beds, Chiara Chair, Pillows)



OATMEAL

CODA

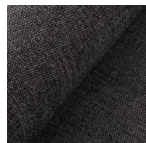
GRADE 50

55% Cotton, 40% Viscose, 5% Polyester

Cleaning Code: W

Martindale: 40,000 cycles

The fluffy chenille yarn used in the weaving process results in extraordinary softness. Unconventional colored yarns interwoven with neutrals, results in a dynamic surface and color.



ASH



BEACH



CONCRETE



MARBLE

SEOUL

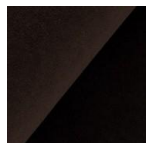
GRADE 50

82% Polyester 18% Cotton

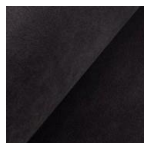
Cleaning Code: W

Martindale: 40,000 cycles

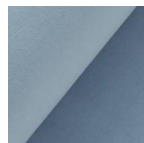
Seoul is a true Velvet, a luxurious look and feel. The pile weaving construction allows the yarns to reflect light in many shades, creating an inherently dynamic surface.



CHOCOLATE

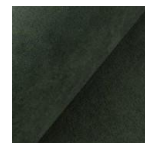


FLANNEL

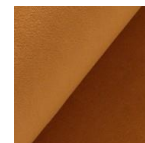


ICE

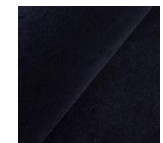
Last Order Date Jan 17



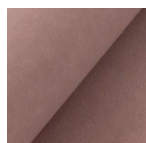
MINERAL



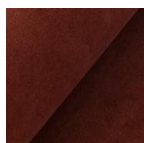
SUNSET



UNIFORM



WOODROSE



ZINNIA

FABRICS

SHEEPSKIN | New

GRADE 50

100% Polyester

Cleaning Code: W

Martindale*: 80,000 cycles

Sheepskin has a chunky, boucle, texture that is cozy and inviting. This cover will give dynamic texture to a piece.



WHITE
new

LANA

GRADE 60

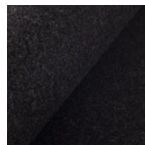
70% Reclaimed Wool 25% Polyamide
5% Other Reclaimed Yarns

Cleaning Code: W

Martindale*: 100,000 cycles

High Abrasion Resistance

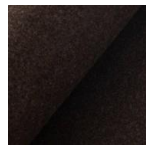
Lana means wool in Italian. It is woven from 70% recycled wool. The textile weight and composition allows for an extraordinary draping and color depth qualities.



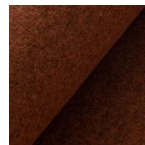
BLACK



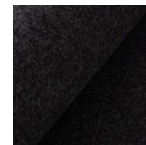
BRIGHT BLUE



BROWN



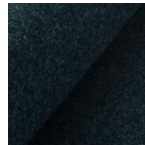
BURNT ORANGE



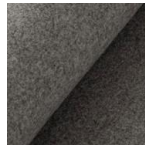
DARK PURPLE



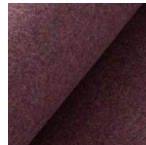
DARK TAUPE



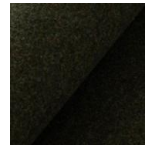
DARK TURQUOISE



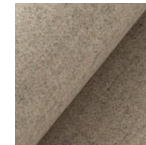
LIGHT GREY



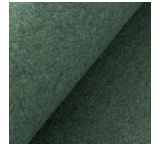
LIGHT PURPLE



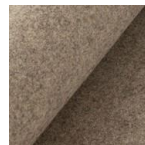
OLIVE GREEN



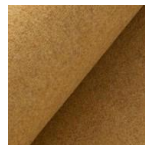
SAND



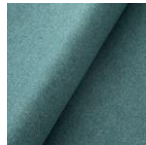
SOFT GREEN



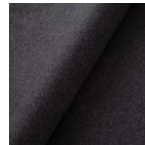
TAUPE



YELLOW



SOFT BLUE



DARK GREY

last order date April 30

last order date April 30

ONNO

GRADE 60

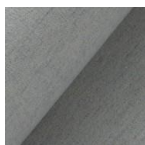
49% Wool, 34% Cotton, 17% Polyamide

Cleaning Code: D

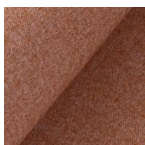
Martindale: 40,000 cycles

Luxurious wool blend with diverse colour offering.

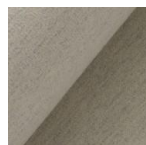
PerformanceFinish: C0, water-repellency



LIGHT GREY
Last Order Date Jan 31



LIGHT ORANGE



SAND

FABRICS

ALMA

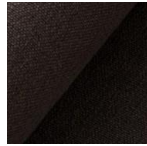
GRADE 70

90% Linen, 10% Polyamide

Cleaning Code: D

Martindale: 40,000 cycles

Luxurious wool blend with diverse colour offering.

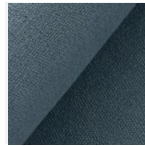


BROWN

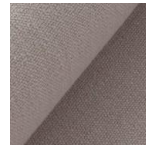
Last Order Date Jan 31



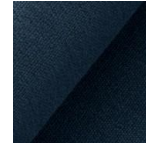
FOREST GREEN



ICE BLUE



LIGHT WARM GREY



NIGHT BLUE



WHITE

BOUCLE

GRADE 70

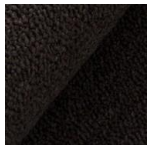
34% Viscose 21% Acrylic 21% Cotton
8% Polyester 8% Linen

Cleaning Code: D

Martindale: 25,000 cycles

French meaning "curled" or "ringed," bouclé can refer to a yarn, made from series of looped fibert. A cozy "nubby" fabric iconic to mid-century furniture.

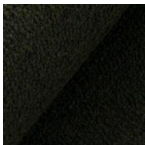
Performance Finish: C0, water-repellency



BROWN



CREAM



GREEN

MARIA

GRADE 70

40% Viscose 35% Acrylic 15% Cotton
10% Polyester

Cleaning Code: D

Martindale: 40,000 cycles

A rich fabric featuring a viscose "silk" quality.

Performance Finish: C0, water-repellency



CREAM



DARK GREY



ICE BLUE



LEMON



PEARL



SMOKE

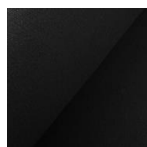
COTTON DUCK

GRADE: N/A

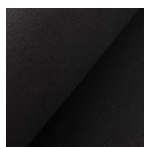
Cleaning Code: W

Canvas fabric is known for being durable, sturdy, and heavy-duty.

Available for the Chiara Chair sling lining only.



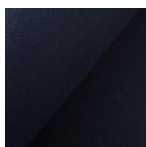
BLACK



BRIQUETTE



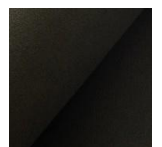
DRIFTWOOD



MIDNIGHT



NATURAL



PINE

FABRICS

UNIFORM MELANGE

GRADE: F

68% Wool, 22% Polyamide, 10% Polyester,
2mm Foam

Cleaning Code: D

Martindale: 80,000 cycles

High Abrasion Resistance

Uniform is knitted, rather than woven, from 75% wool. The surface layer consists of virgin wool, knitted in the Netherlands from various tones of yarns, resulting in a dynamic color depth that changes depending on the angle at which it is

observed. The inherent stretch of knitted fabrics allows for draping over organic shapes without the need for seams.



ALOE



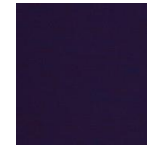
ASH



AUTUMN



BANANA



BLUEBERRY



BROWNIE



CACTUS



CAFÉ



CHALK



CHARCOAL



CLAY



COPPER



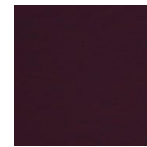
CORAL



CYAN



DUSK



FIG



HYDRO



ICE



INK



JEANS



JUNE



MINT



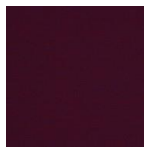
OASE



OIL



PEACOCK



RASPBERRY



RUMBA



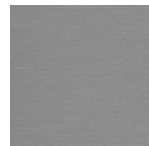
SEA



SHELL



SIENNA



SMOKE



SOIL



SOLAR



STONE



SUNSET



SYRAH



TANGO



VIOLET

FABRICS

APPAREL

GRADE: I

21% Wool 11% Polyamide 7% Polyester Filling

Cleaning Code: D

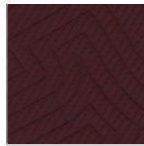
Martindale: 80,000 cycles

High Abrasion Resistance

Apparel is a knitted, rather than woven fabric constructed of 75% wool. The surface layer consists of virgin wool, knitted from various tones of yarns. Knitted in the Netherlands, the asymmetrical large-scale embroidery pattern challenges the proportionality of shapes. The inherent stretch of knitted fabrics allows for draping over organic shapes without the need for seams.



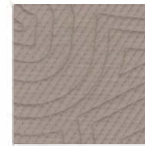
BLOUSON



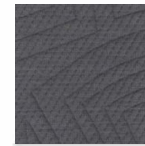
BOLERO



BOMBER



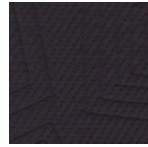
CAPE



CLOAK



COSSACK



DUFFEL



JEAN



LODEN



MANTLE



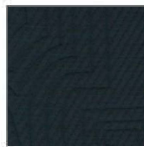
MINO



PARKA



PEA



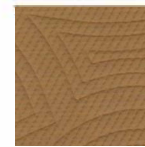
PEPLUM



PONCHO



PUFFER



ROBE



SLICKER



TUNIC



ULSTER



DUSTER

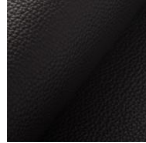
LEATHERS

REIN

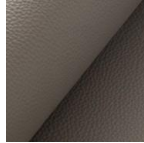
GRADE 100

100% Top Grain
Slightly-Corrected Markings
Pigmented

Rein's embossed finish feels like a natural leather, while providing durability and a two-toned, highly pigmented appearance



BASALT



GREY



PARCHMENT



TOAST

CLASSIC

GRADE 200

100% Top Grain
Corrected Markings
Semi Aniline Finish

A semi-aniline leather that both originates and is tanned in Brazil. It has a two-tone effect for added textural depth.



ANTHRACITE



SABLE



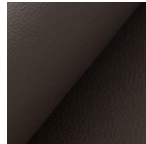
SAHARA

EVOQUE

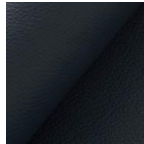
GRADE 200

100% Top Grain
Slightly Corrected w/ Natural Grain
Pigmented Finish

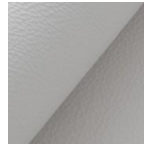
The pigmented finish gives high performance and durability. Evoque has a matte look to meet today's requirements for a contemporary look.



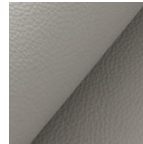
ARDESIA



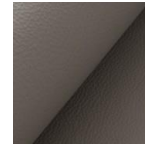
ATLANTIC



FROST



MIST



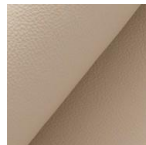
STONE

BROADWAY

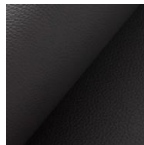
GRADE 300

100% Top Grain
Slightly Corrected Markings
Semi Aniline Finish

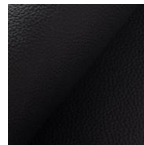
A top-grain, semi-aniline leather with a medium coarse grain, which adds textural depth.



ALABASTER



GRANITE



ONYX

PETRA

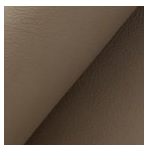
GRADE 300

100% Top Grain
Corrected Markings
Semi Aniline Finish

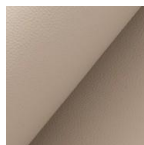
A fine-to medium-size grain with a soft, semi-aniline finish, which provides a two-tone effect.



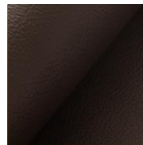
GRANITE



MICA



QUARTZ



TERRE

LEATHERS

DURANGO

GRADE 400

100% Top Grain
Slightly-Corrected Markings
Semi Aniline Finish

A top-grain, semi-aniline leather tanned in Mexico with medium to coarse grain structure.



PEWTER



RIO

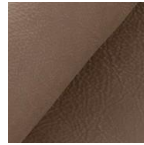
ELBA

GRADE 500

100% Top Grain
Hand Sanded and Two Tone
(Full) Aniline Finish



DEEP GREEN



DESERT

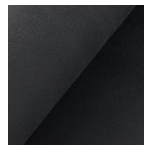


SAND

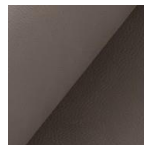
MONTECRISTO

GRADE 600

100% Top Grain
Visible, Full Grain Markings
(Full) Aniline Finish



ASH



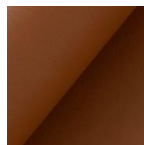
WARM GREY

PALOMA

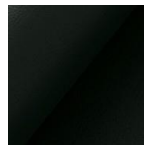
GRADE 600

100% Top Grain
Visible, Full Grain Markings
Semi-Aniline Finish

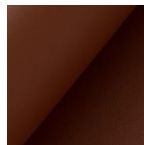
A full-grain aniline leather with a fine structure and very soft hand. Tanned in Italy, its sophisticated transparency and natural grain adds textural depth.



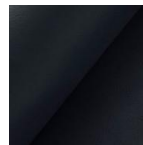
BOURBON



DEEP GREEN



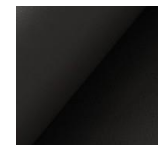
DEER



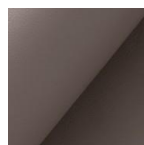
DUSK



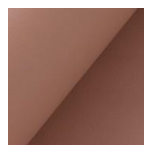
HEMP



LAVA



MOONSAND



PINK

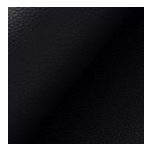
DONNA

GRADE 700

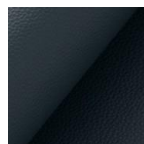
100% Top Grain

Visible, Full Grain Markings
Semi-Aniline Finish

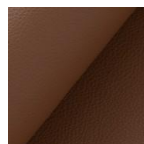
A full-grain, semi-aniline leather with a mid to coarse grain structure. Tanned in Italy, it is incredibly soft yet durable, with visible natural markings that add textural depth.



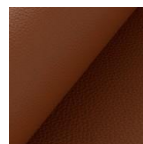
BLACK



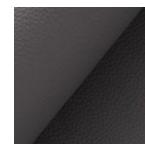
BLUE WELL



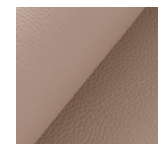
CAMEL



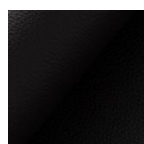
COGNAC



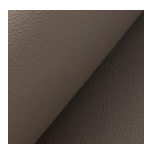
COOL GREY



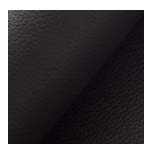
CREMA



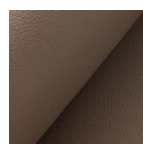
DARK BROWN



GREY



INK



TAUPE

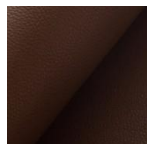
LEATHERS

SUAVE

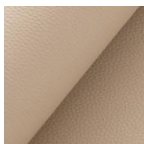
GRADE 700

100% Top Grain
Visible, Full Grain Markings
Semi-Aniline Finish

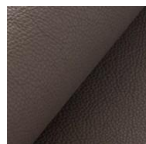
A semi-aniline leather with a subtle two-toned effect. Tanned in Italy, its mid to coarse grain structure provides a soft yet durable feel.



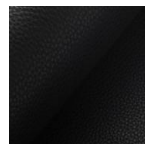
AMARETTO



CANVAS



CHROME



NERO

COACHELLA

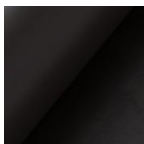
GRADE 800

100% Top Grain
Visible, Full Grain Markings
Full-Aniline Finish

A full-grain, full-aniline leather with a fine structure and waxed and oiled finish. Originating in Germany and tanned in Italy, its natural markings add character and textural depth.



CAMEL



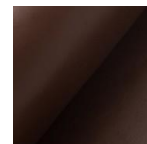
COAL



COGNAC



GREEN



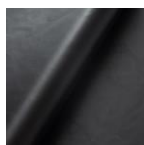
MADERA



SMOKE



WARM GREY



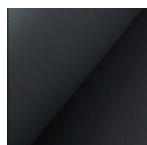
NOIR

FINO

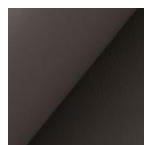
GRADE 800

100% Top Grain
Visible, Full Grain Markings
Semi Aniline Finish

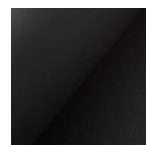
A full-grain aniline leather with a fine structure and very soft hand. Originating in Germany and tanned in Italy, its sophisticated transparency and natural markings add textural depth.



BLUE



CHARCOAL



COOL GREY



ICE

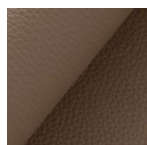


SADDLE

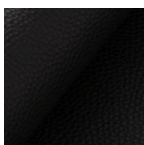
ECCO

GRADE M

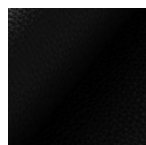
100% Top Grain
Visible, Full Grain Markings
Semi Aniline Finish



GRIS













MARONE















NERO

FABRIC GUIDE

		DEFINITION
GRADE		Grades indicate price jumps for covers. Manufacturers assign grades based on how expensive the fabric is to make and source; The intricacy of the weave, fiber content, construction, and procurement are all grade variables.
FIBRE		<p>A fabric is a network of single or multiple fibres.</p> <ul style="list-style-type: none"> Natural fabrics are usually favored by someone looking for the softest, less performance-based feel to their furniture. Synthetic fabrics were designed for superior durability and clean ability with sometimes cheaper manufacturing costs than natural fabrics.
CLEANING CODE		<p>Soiled areas should be cleaned based on the cleaning code(s) found on your EQ3 product. If cleaning codes are not available, contact the retailer from where you purchased the product.</p> <p>D Dry Clean Only</p> <p>W Water Based Cleaner</p> <p>Spot clean using only the foam from a water-based cleaning agent such as a mild detergent or non-solvent upholstery shampoo product. Apply foam with a soft brush in a circular motion. Vacuum when dry.</p> <p>S Solvent Based Cleaner</p> <p>Spot clean using mild water-free solvent or dry-cleaning product. Clean only in a well-ventilated room and avoid any product containing Carbon Tetrachloride or other toxic materials.</p> <p>WS Water/Solvent Based Cleaner</p> <p>Spot clean with a mild solvent, an upholstery shampoo or the foam from a mild detergent. When using a solvent or dry-cleaning product, follow the instructions carefully and clean only in a well-ventilated room. Avoid any product that contains Carbon Tetrachloride or any other toxic materials.</p>
RUB COUNT		<p>In testing, the number of times a fabric can withstand double rubs (Wyzenbeek method) or figure-eight rubs (Martindale method) before fibers meet failure.</p> <p>[W] ... Fabric rub count is generally tested using the Martindale method of figure-eight rubs. Rub counts indicated with [W] have been tested using the Wyzenbeek method.</p> <p>* ... All EQ3 fabrics are tested and rated for residential use (40,000 rubs), select covers indicated with * have been tested above this standard (test to fail) .</p>
HIGH ABRASION RESISTANCE- RUB COUNT		In testing, covers exceed 75k Martindale (figure-eight) and are noted for higher traffic uses.
SOAP & WATER CLEANABLE		Easily cleanable with water, mild soap and/or water-based solution; Be sure to follow the matching Cleaning Code precisely.
VARIED COLOURS		Bright, saturated, and/or muted coloured hues within the collection.
TEXTURE - PLUSH SOFT		Made with dense pile fibres providing an exceptionally soft texture and distinctive appearance; such as chenille and velvet. Luxurious plush fabrics such as chenille and velvet provide a soft and indulgent feel, and their pile can create varying reflections of light.
TEXTURE - DISTINCT WEAVES		Woven fabric using chunky or larger yarns providing a unique feel and thick appearance.
REPELS WATER – BY PERFORMANCE COATING		Fabrics that are coated with a C0 Performance Coating to resist absorbing water and spills
REPELS WATER – NATURALLY BY FIBRE		Fibres that naturally resist absorbing water, such as Polyester and Wool

LEATHER GUIDE

							
	GRADE	FINISH TYPE	APPEARANCE	REPELS LIQUID	DEVELOPS PATINA	NATURAL MARKINGS	COLOUR VARIATION
Broadway	300	Semi-Aniline	Solid		•		
Classic	200	Semi-Aniline	Two Tone		•		
Coachella	800	Aniline	Solid, Waxed		•	•	•
Donna	700	Semi-Aniline	Solid		•	•	•
Durango	400	Semi-Aniline	Solid		•		
Ecco	M	Semi-Aniline	Solid		•	•	•
Elba	500	Aniline	Two Tone, Sanded		•	•	•
Evoque	200	Pigmented	Solid, Matte	•			
Fino	800	Semi-Aniline	Solid		•	•	•
Montecristo	600	Aniline	Stonewash, Sanded		•	•	•
Paloma	600	Semi-Aniline	Two Tone		•		
Petra	300	Semi-Aniline	Two Tone		•		
Rein	100	Pigmented	Solid	•			
Suave	700	Semi-Aniline	Two Tone		•	•	•

		DEFINITION
GRADE		Grades indicate price jumps for covers. Manufacturers assign grades based on how expensive the leather is to make / process and source. The original excellence of the hide, levels of processing, finishes, and origin are all grade variables.
FINISH TYPE		<p>Top grain leather is finished in several ways, from most protection (Pigmented) to most natural (Aniline).</p> <p>Semi-Aniline finish and Pigmented finish</p> <p>Clean with a mild soap and water solution. Use a mild soap with a neutral pH. Rinse with a clean, damp cloth to remove any soap residue. Do not use a soap product that is harsh on your skin, as it will be harsh on the leather. Always test soap solution on a small, unseen area of the leather to ensure that the solution does not damage the leather (there should be no colour transfer onto your cloth).</p> <p>Full-Aniline finish, Aniline finish, and Aniline dyed</p> <p>Clean only with a lightly dampened cloth. Do not use any type of soap on natural (aniline) leathers.</p>
APPEARANCE		Solid means a saturated colour with little variation. Two tone is a blend of darker and lighter shades within one colour.
REPELS LIQUID		Leather with a protective finish that causes liquid to bead up and roll away. (Pigmented)
DEVELOPS PATINA		A soft sheen and colour variation that develops beautifully over time. (Semi-Aniline and Aniline).
NATURAL MARKINGS		Natural characteristics of an authentic hide, including scars and wrinkles.
COLOUR VARIATION		Semi-aniline and aniline leathers can have more color variation than pigmented as pieces can be cut from different parts of the hide, or from different lots. This is not a material defect, but evidence that it is a natural product.