



Kingspan Environmental Project Framework Document
"Details of Product Number E3001 - Motor"

Copyright 2008, Kingspan Environmental.

The information contained in this document is the property of Kingspan Environmental. And may not be divulged, copied or reproduced on any medium whatsoever without our express written authority.

Prepared: Mike Harrison

Date: 14th November 2008

Issue: 2

Registered Office:

Kingspan Environmental
College Road North,
Aston Clinton
Aylesbury
Buckinghamshire
HP22 5EW

CIRCULATION

Please note that the following circulation list may change in future issues of this document.

Full copies

- 1 Dave Vincent
- 2 Paul Copping



Section 1 - Motor Details

- Kingspan Product Number (E3001)
- Speed (N) 7.5 Revolutions Per Minute
- Minimum Output Torque 29Nm
- Output Shaft Diameter = 18mm (h7) with 6mm keyway
- Output Shaft Length = 35mm
- IP 65 Terminal Box
- Motor Rating 50 Watts
- 230V, Single Phase, 50 Hz
- Fitted with Stainless Steel Nuts/Bolts and Washers

E3001 - BA Motor & Gearbox assy Single Phase

1 Definitions

- 1.1 The motor, gearbox and electrical termination assembly is referred to as "the motor".

2 Mechanical

- 2.1 Output shaft torque => 29Nm.
 2.2 Output shaft rotation = 7.5 rpm.
 2.3 Output shaft diameter = 18mm.
 2.4 Output shaft length => 35mm.
 2.5 The output shaft must have a key way 6mm wide x 25mm long at the end.
 2.6 Casing to incorporate fixing holes as detailed on sheet 2.
 2.7 The complete assembly must be minimum IP54.
 2.8 Motor casing to conform to drawing on sheet 2

3 Electrical

- 3.1 The electrical connections must be screw block connections on the top of the casing.
 3.2 The cable entry (for mains power cable) must be in the horizontal plane.

- 3.3 The cable entry should accept standard 1mm² 3 core cable.

- 3.4 The enclosure for the electrical connections must be minimum IP65.

- 3.5 The electrical connection must be labelled as shown below.

- 3.6 The motor must run from 230V 50Hz UK and continental European mains electrical supply.

- 3.7 Maximum full load current = 1 Amp

- 3.8 Maximum current during start = 1 Amp

- 3.9 The motor must require a 3 micro farad capacitor, sited externally, for start up.

- 3.10 Motor rating = 50W.

4 General

- 4.1 The motor must come with a 2 year warranty.



Wire Colours

230v Mains Supply: Red, Black

Equipment Earth: Green/Yellow

Wire Size

1 mm²

1 mm²

General Notes

Please check with Environmental Treatment Services Ltd that this drawing is the latest issue			
Issue	Date	Drawn by	Description
01	20.08.07	SP	CC455
02	14.11.08	MH	SHAFT SIZE CHANGED TO DIA.18

All dimensions in mm

Scale: Not to scale

Material: n/a	Tolerance: as shown
Finish: n/a	Thickness: n/a
Weight: n/a	Surface Area: n/a

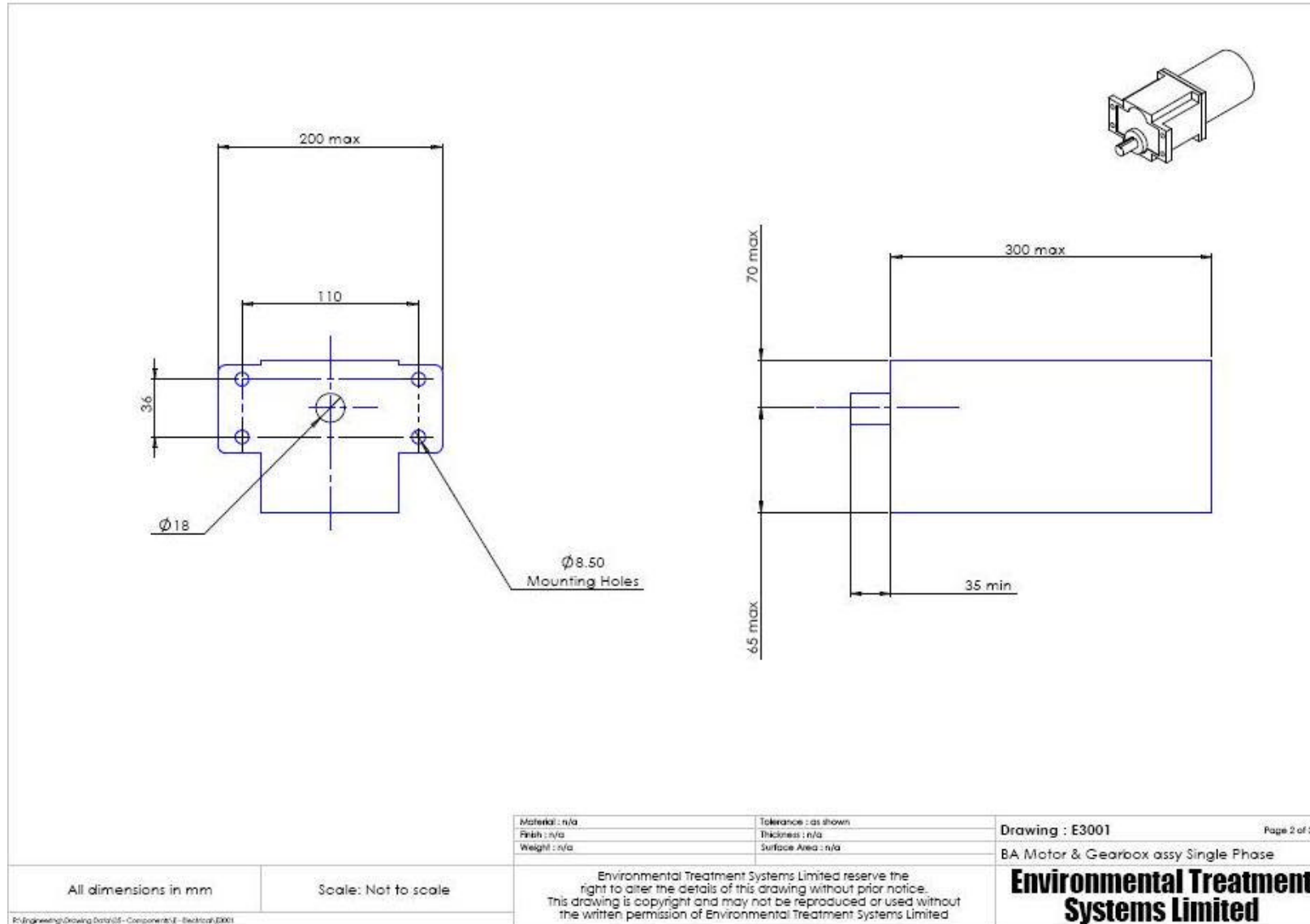
Environmental Treatment Systems Limited reserve the right to alter the details of this drawing without prior notice. This drawing is copyright and may not be reproduced or used without the written permission of Environmental Treatment Systems Limited

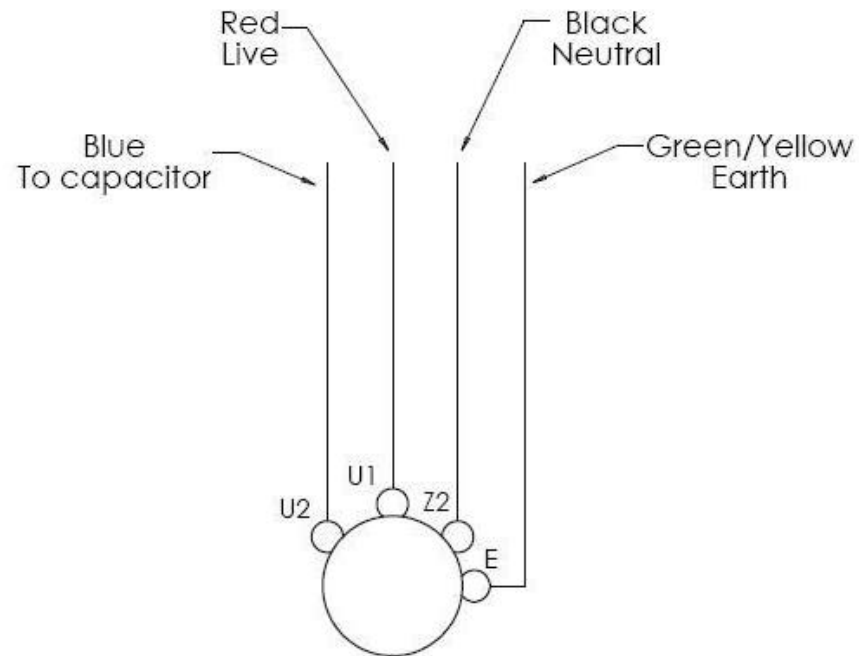
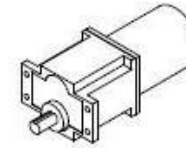
Drawing : E3001

Page 1 of 8

BA Motor & Gearbox assy Single Phase

**Environmental Treatment
Systems Limited**





Gearbox & Motor

Material : n/a	Tolerance : as shown	Drawing : E3001	Page 3 of 3
Finish : n/a	Thickness : n/a		
Weight : n/a	Surface Area : n/a		

BA Motor & Gearbox assy Single Phase

All dimensions in mm	Scale: Not to scale
----------------------	---------------------

Environmental Treatment Systems Limited reserve the right to alter the details of this drawing without prior notice. This drawing is copyright and may not be reproduced or used without the written permission of Environmental Treatment Systems Limited

Environmental Treatment Systems Limited