

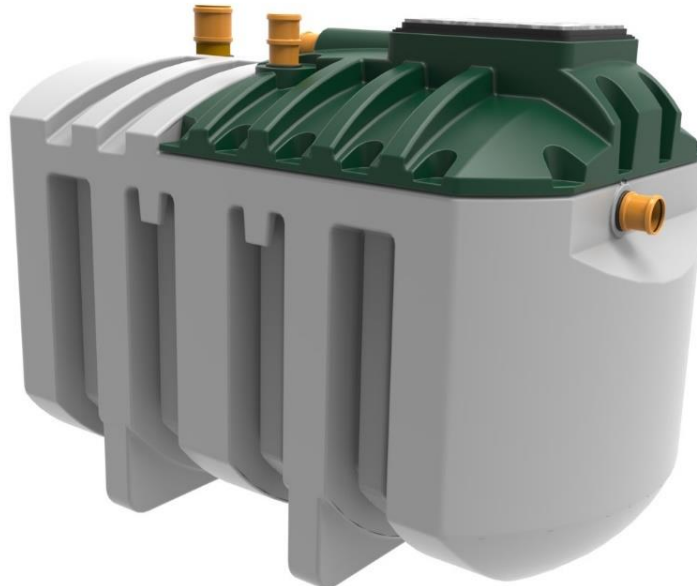
# Harlequin® HydroClear

## SEWAGE TREATMENT PLANT

## HydroClear HC9 Wastewater Treatment Plant

HydroClear represents significant progress for the domestic wastewater treatment industry.

Contemporary design engineering and analysis software and state-of-the-art manufacturing facilities combine to create this unique product which dominates the sewage treatment plant market with class-leading pollutant removal level of 97%.



### Standard Features:

- ◆ Tank body moulded in one piece from durable medium density polyethylene material
- ◆ 110mm inlet and outlet connections
- ◆ Integrated lifting eyes for ease of handling and installation
- ◆ Fully secured 600x450mm pedestrian duty, flush fitting manhole cover comply with statutory regulations
- ◆ Above ground air blower housing delivers more reliable and efficient operation, and allows easy access for maintenance
- ◆ Easy access to the bubble diffuser within the tank
- ◆ Virtually silent operation
- ◆ Cost effective installation
- ◆ HydroClear owners can determine their own de-sludge intervals giving potential cost savings
- ◆ Mechanically reliable with no moving parts or electrics within the tank
- ◆ Certified to EN12566-3

# Harlequin® HydroClear

## SEWAGE TREATMENT PLANT

## HydroClear HC9 Wastewater Treatment Plant

### Optional Equipment:

- ◆ Air blower function alarm
- ◆ Pumped outlet
- ◆ 300mm manhole riser(s). Max 3 risers on a gravity tank or 2 risers on a pumped outlet<sup>+</sup>  
<sup>+</sup> *Maximum invert level 2m. Use 1200mm concrete rings to achieve inverts below max. number of risers.*

### Technical Data:

Nominal hydraulic daily load	1,350Litres / day
Nominal organic daily load	540g BODs / day
Inhabitants served	7 - 9
Desludging interval	12 months *
Electrical consumption	1.8 kWh / day
Power requirements	230V 76W 1.0A (start-up current)
Volumes (at operational height)	Primary settlement – 2295 Litres Aeration chamber – 1245 Litres Final settlement – 935 Litres
Overall dimensions	L 2900 W 1620 H 2000 mm
Standard inlet depth	500 mm
Standard outlet depth	660 mm
Depth from invert to base	1500 mm
Pipe diameter	110 mm
Net Weight	430 kg

\* *de-sludge interval up to 12 months depending on the number of inhabitants*

### Issued By:

Harlequin Manufacturing Limited  
 21 Clarehill Road, Moira, Co. Armagh, N.Ireland, BT67 0PB  
 T: +44 (0)28 9261 1077  
 W: [www.harlequin-mfg.com](http://www.harlequin-mfg.com)  
 E: [info@harlequin-mfg.com](mailto:info@harlequin-mfg.com)