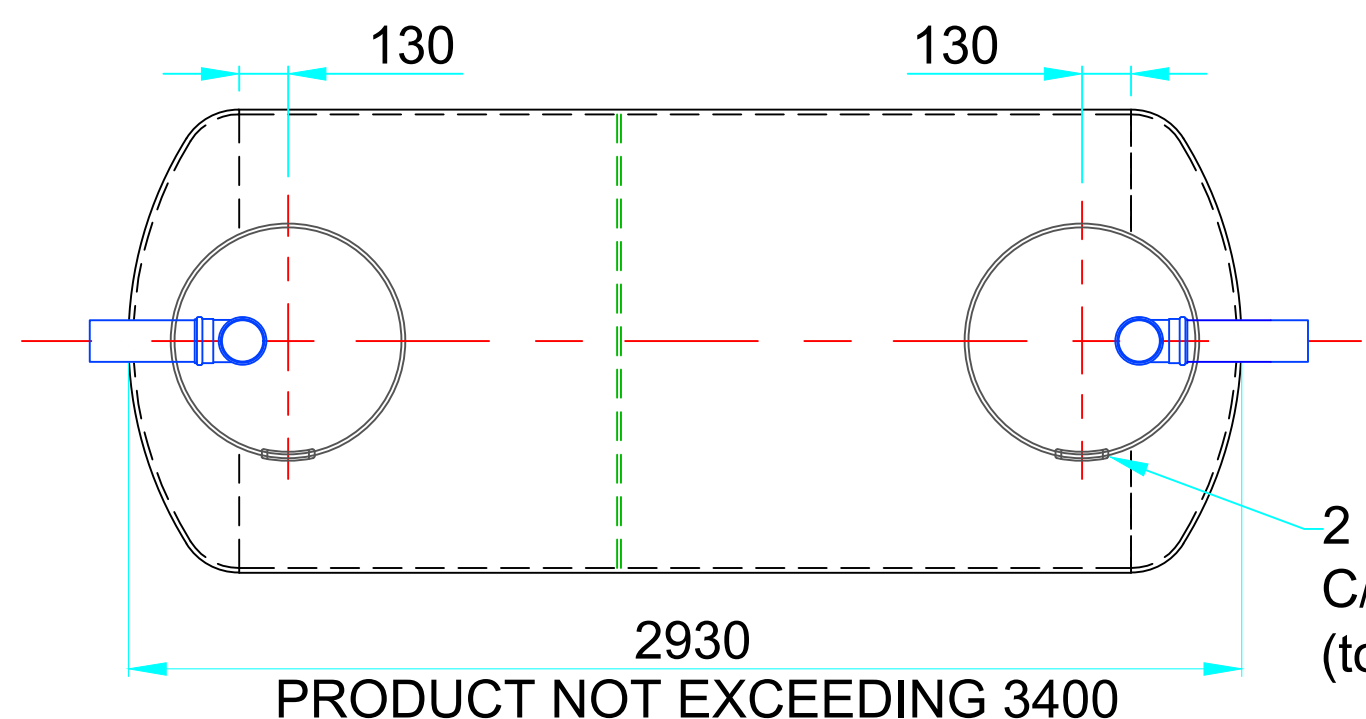
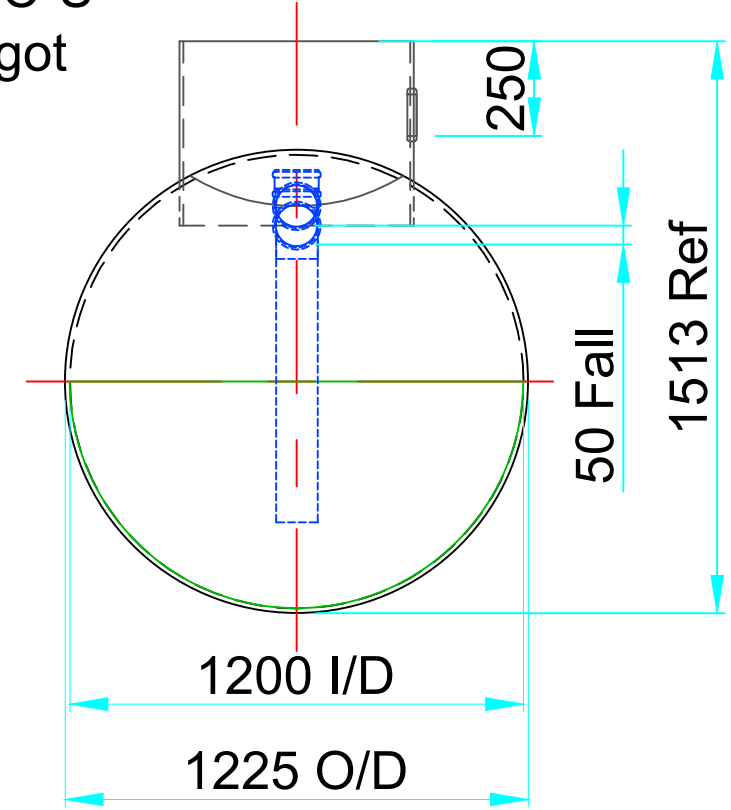
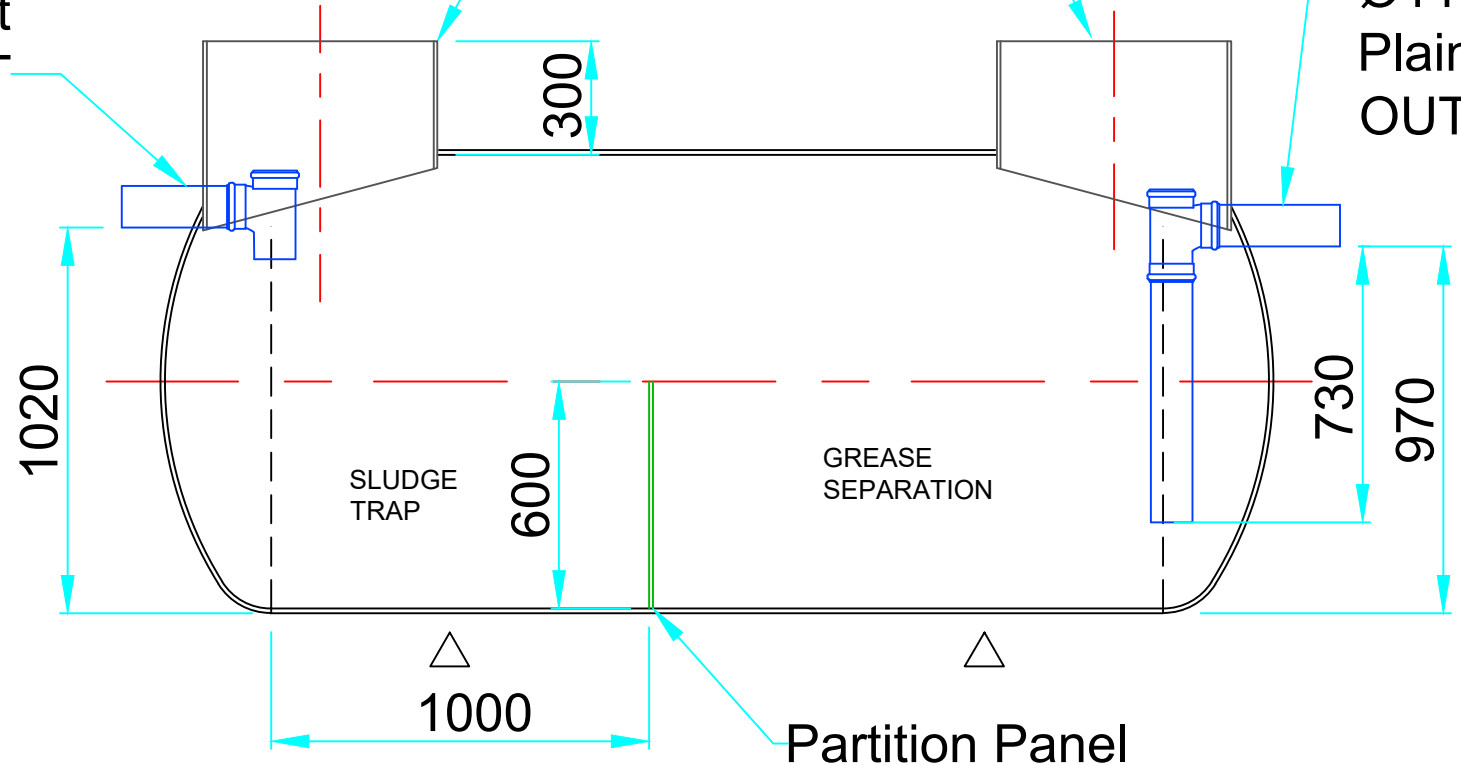


Ø110 PVC-U  
Plain Spigot  
INLET

Ø600 Access Shafts

Ø110 PVC-U  
Plain Spigot  
OUTLET



2 No Ø119 Vent Holes  
C/W Rubber Ring  
(to suit Ø110 pipe)

Key to Symbols: △ Lifting Point

○ Hold-down strap rib locations where mechanical anchoring is required

— Manufacturing Joint

○ BoQ's reference no.

Distribution	Date	Rev	Issued only for purpose indicated:	**
				BY:

This drawing is confidential and must not be copied, reproduced or passed to a third party without written permission from SPEL PRODUCTS

DIMENSIONS ARE SUBJECT TO DIMENSIONAL TOLERANCES. If critical, check physically prior to installation

Water table & Burial Depth: The customer must check tank specification is compatible with ground water table level (in winter) and burial depth. If in doubt refer to SPEL Data Manual Section 13 or contact SPEL Products Sales or Technical Department

Title: SPEL 200 Series Grease/Food Separation Tank  
Contract: --

Capacity 3,000 Ltrs  
Tank Specification STANDARD  
Laminate Specification GP

All sizes in mm  
If in doubt ASK!

**SPEL**  
Lancaster Road, Shrewsbury  
Shropshire, SY1 3NQ, England  
Telephone: +44 (0)1743 445200  
www.spelproducts.co.uk

Drawn  
Checked  
Date  
Scale 1:20 Sheet A3

TANK SERIAL No.  
INTERNAL ORDER No.  
Revision **A**