

# DLX (Wall Mount) & DLXB (Foot Mount) Solenoid Dosing Pumps

## TECHNICAL FEATURES

- *Flow Rate:* From 1 to 20 L/H (15 L/H with PVDF head)
- *Maximum Pressure:* 20 Bar
- *Power Supply:* 230v standard; 120v, 12vdc, 24vac, 24vdc
- *Stroke Rate:* 120 impulses/minute maximum (150 impulses/minute for 20 L/H 3 Bar model)
- *Pump Head:* PP or PVDF with lip or ceramic ball valves; Auto-bleed options available
- *Diaphragm:* PTFE
- *Mounting options:* Wall mounted as standard; DLXB foot mounted option
- *Stroke length adjustment:* Available on DLXB foot mounted options
- *Installation Kit:* PP or PVDF Injection Valve, Foot Filter, 2m each of suction/discharge tubing, screws & plugs for wall mounting

### Foot Mount



## DLX MODELS

|            |   |
|------------|---|
| MA/AD      | Analogue manual dosing with dual scale adjustment (0 – 100% & 0 – 20%);<br>Optional level alarm   |
| MA/MB      | Digital manual control (0 – 100%); Level alarm  |
| VFT/MBB    | Proportional dosing control with pulse multiplier (1xN), pulse multiplier with memory (1xN- M) and pulse divider (1/N); Digital manual dosing; Level alarm  |
| MF/M       | Digital manual control (0 – 100%); Proportional dosing control with pulse multiplier (1xN), pulse multiplier with memory (1xN- M) and pulse divider (1/N); 4-20 mA proportional control; Level alarm; Timer; Alarm output relay |
| pH-Rx-CI/M | Integral pH, Redox and Chlorine (PPM) control; 0 – 14 pH measuring range; - 1000 - +1400 mV Redox measuring range; 0 – 2, 0 – 20 or 0 – 200 PPM measuring range; 4-20 mA output; alarm relay output; Level alarm                |
| pH-Rx/MBB  | Integral pH and Redox control; 0 to 14 pH measuring range; - 1000 to +1400 mV Redox measuring range; digital manual control; Level alarm  |

# DLX (Wall Mount) & DLXB (Foot Mount) Solenoid Dosing Pumps

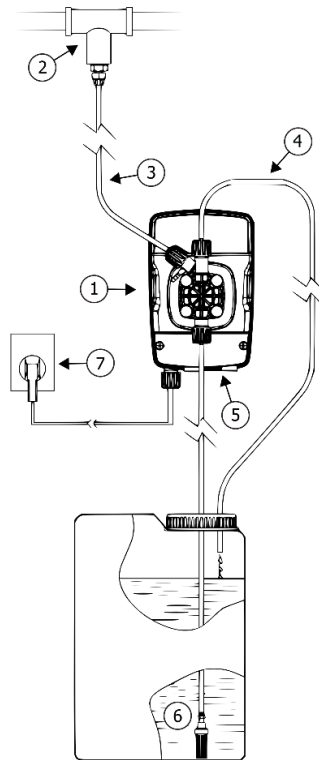
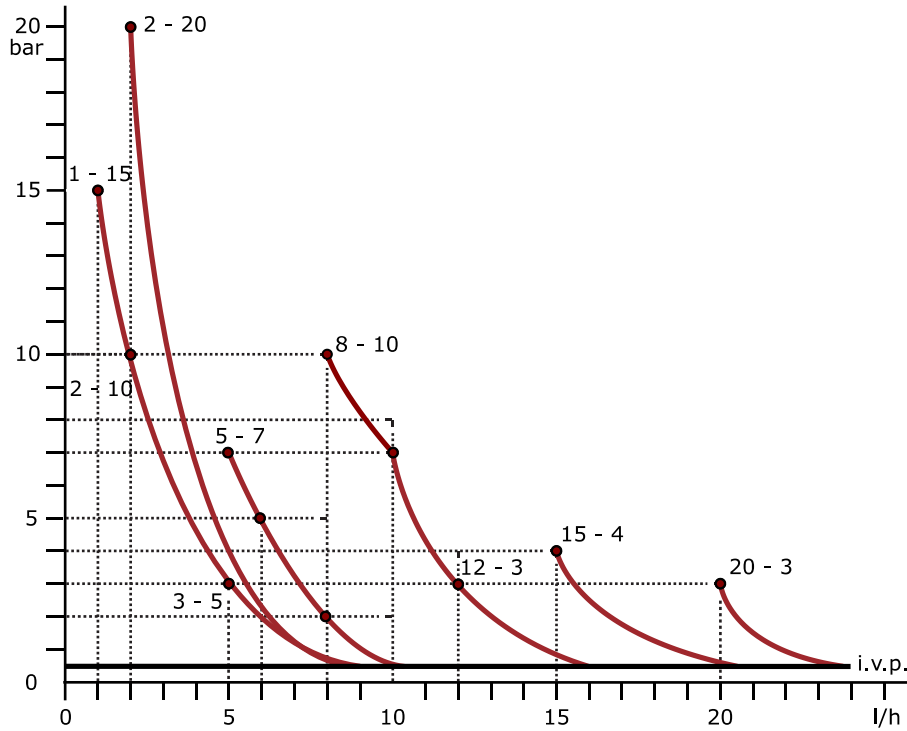
## PUMP TECHNICAL DETAILS *\*The figures below are based on dosing water at 20°C*

| Model | Flow rate (L/H) | Max pressure (Bar) | Injection volume (cc) | Max injection frequency (imp/minute) | Tubing (IDxOD mm) | Power supply   |
|-------|-----------------|--------------------|-----------------------|--------------------------------------|-------------------|----------------|
| 01-15 | 1               | 15                 | 0.14                  | 120                                  | 4x6 / 6/8         | 230v, 50-60 Hz |
|       | 2               | 10                 | 0.28                  |                                      |                   |                |
|       | 3               | 5                  | 0.42                  |                                      |                   |                |
| 02-20 | 2               | 20                 | 0.28                  | 120                                  | 4x6               | 230v, 50-60 Hz |
| 05-07 | 5               | 7                  | 0.69                  | 120                                  | 4x6 / 6/8         | 230v, 50-60 Hz |
|       | 6               | 5                  | 0.84                  |                                      |                   |                |
|       | 8               | 2                  | 1.11                  |                                      |                   |                |
| 08-10 | 8               | 10                 | 1.11                  | 120                                  | 4x6 / 6/8         | 230v, 50-60 Hz |
|       | 10              | 7                  | 1.39                  |                                      |                   |                |
|       | 12              | 3                  | 1.67                  |                                      |                   |                |
| 15-04 | 15              | 4                  | 2.08                  | 120                                  | 4x6 / 6/8         | 230v, 50-60 Hz |
| 20-03 | 20              | 3                  | 2.6                   | 120                                  | 4x6               | 230v, 50-60 Hz |

Please note that our DLX pumps are supplied with 4/6 hose fittings as standard. On certain modes if the pump is being used with more viscous chemicals such as Calcium Hypochlorite 6/8 fitting can be fitted on request

Automatic air bleed heads can be fitting on certain models if the pump is being used with chemicals that can cause gassing such as Hydrogen Peroxide. See separate datasheet for example of installation using this head

# DLX (Wall Mount) & DLXB (Foot Mount) Solenoid Dosing Pumps



Example shown above of pump being used with the automatic bleed head