

## **GARADRY- INDUSTRIAL STRENGTH ALUMINUM THRESHOLD** Part Number: WS437

### PREPARATION

For best results the surface should be smooth and flat and devoid of bumps or troughs. Remedial action should be undertaken to rectify uneven surfaces prior to fitting the threshold seal. Always unpack your box and check the contents against the list above before commencing installation.

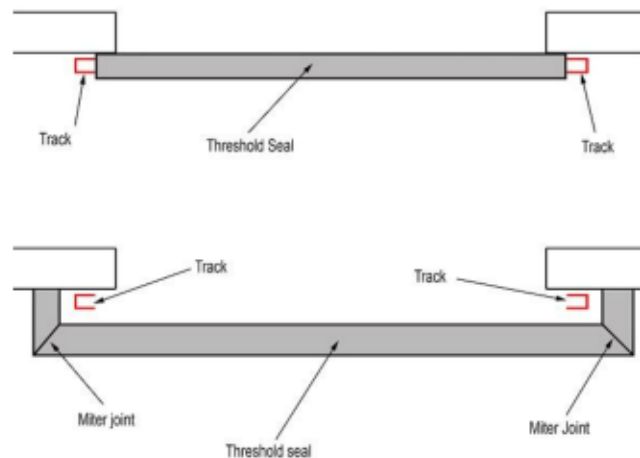
For rough surfaces Garadry adhesive & sealant should be used underneath the threshold seal to ensure a watertight seal.

### TOOLS REQUIRED

- Tape measure
- Hacksaw
- Pencil or marker pen
- 6mm Masonry drill bit
- Electric screwdriver

### FITTING POSITIONS

The threshold seal can either be fitted in between the door tracks, or it can be set back slightly from the door and mitred around the door tracks. This may be suitable if the door has an alarm sensor that cannot be removed.



**GARADRY- INDUSTRIAL STRENGTH ALUMINUM THRESHOLD** Part Number: WS437

**STEP ONE**



Determine whether the threshold is to be fitted between the door tracks, or mitred around the tracks.

(a) Measure the width of the opening in between the door tracks.

(b) Measure around the door tracks, and the distance between the threshold seal fitting position and the wall

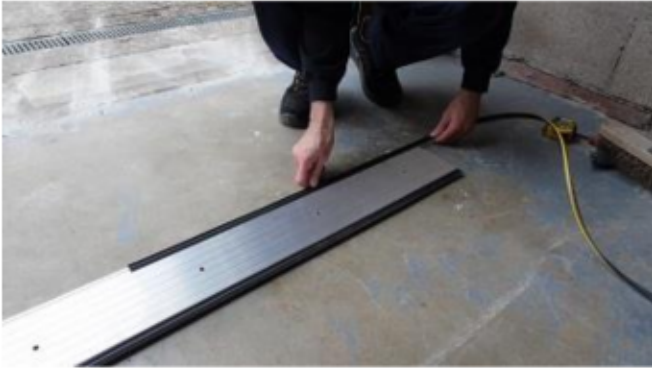
**STEP TWO**



(a) Mark and cut the threshold to size to sit in between the door tracks. (b) If fitting the threshold seal around the door tracks, measure the distance between the wall and the back edge of the threshold seal and cut the end sections to this length. Using a mitre saw, cut the threshold seal sections accordingly.

**GARADRY- INDUSTRIAL STRENGTH ALUMINUM THRESHOLD** Part Number: WS437

**STEP THREE**



Turn the threshold section(s) upside down and insert the bottom seals into the grooves at either end of the threshold.

**STEP FOUR**



Return the threshold seal to an upright position and lay it into position across the opening. Using a marker pen/pencil, mark where to drill the holes in the concrete.

**GARADRY- INDUSTRIAL STRENGTH ALUMINUM THRESHOLD** Part Number: WS437

**STEP FIVE**



Remove the threshold, and using a 6mm drill bit, drill the holes for the screws. Once completed, ensure the surface is brushed clean to remove debris.

**STEP SIX (OPTIONAL)**



In the case of the floor being uneven, lay a bed of adhesive underneath where the threshold seal is to be fitted to ensure a watertight seal. With the threshold seal in position, mark along the front and back edge of the seal with a marker pen/pencil. Remove the threshold seal and mark a line approx 10mm inside the existing lines, followed by a zig zag line in the middle of them. Apply adhesive & sealant following the pencil lines created.

**GARADRY- INDUSTRIAL STRENGTH ALUMINUM THRESHOLD** Part Number: WS437

**STEP SEVEN**



Place the threshold seal back into position. Insert all of the screws in their respective holes and hand tighten each of them. Then ensure that all screws fit snugly.

**STEP EIGHT**



Apply pressure to the threshold seal with your foot. Using an electric screwdriver, tighten the screws into place making sure they are flush but do not overtighten.

**GARADRY- INDUSTRIAL STRENGTH ALUMINUM THRESHOLD** Part Number: WS437

**STEP NINE**



Wipe the surface of the threshold seal to remove any grease or dirt.

**STEP TEN**



Depending on the fitting position of the threshold seal:

- (a) Apply sealant & adhesive around the edges of the threshold seal and the frame to ensure a watertight seal.
- (b) Apply adhesive and sealant in the mitre join of the threshold seal, and around the edges of the seal to ensure a watertight seal.

**TEST THE THRESHOLD SEAL**

**GARADRY- INDUSTRIAL STRENGTH ALUMINUM THRESHOLD** Part Number: WS437

Using a bucket of water, or a hosepipe, test the threshold seal for water ingress. If water enters underneath the threshold seal run a line of adhesive & sealant along the front and back edge of the seal.

Alternatively, unscrew the threshold seal and apply a bed of adhesive as per Step Six of the instructions.