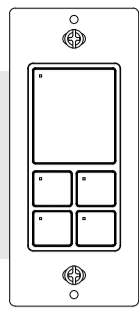


SCENE CONTROLLER
ZEN32

ZOOZ™
bright ideas
www.getzooz.com
ask@getzooz.com



FIRMWARE VERSION 1.01

FEATURES

- Switch button: 15 A relay for Z-Wave on/off control
- 4 remote control buttons: trigger scenes and control other devices in your Z-Wave network from this switch
- **NEW 700 series Z-Wave** chip for better range and faster control
- **Direct 3-Way:** works with regular on/off switches in a 3-way
- **Scene control:** trigger actions with multi-tap (select hubs only)
- **Smart bulb mode:** disable relay and control the light via Z-Wave
- Adjustable LED indicator in 4 colors and 3 brightness levels
- S2 Security and SmartStart for easier inclusion

SPECIFICATIONS

- Model Number: ZEN32
- Z-Wave Signal Frequency: 908.42 MHz
- Power: 120 VAC, 60 Hz
- **Maximum Load:** 150W LED, 960W Incandescent, 1800W (15A) Resistive, 3A motor (DON'T use with receptacles)
- Range: Up to 500 feet line of sight
- Operating Temperature: 32-104° F (0-40° C)
- Installation and Use: Indoor only

CAUTION

This is an electrical device - please use caution when installing and operating the scene control switch. Remote control of appliances may result in unintentional or automated activation of power. Do not use this Z-Wave device to control electric heaters or other appliances which produce the risk of fire, burns, or electrical shock when unattended. To reduce risk of overheating and possible damage to other equipment, do not install this unit to control a receptacle; a motor-operated appliance; a fluorescent lighting fixture; or a transformer-supplied fixture.

BEFORE YOU INSTALL

This switch is intended for installation in accordance with the National Electric Code and local regulations. It is recommended that a licensed electrician perform this installation.

WIRING: READ IT!

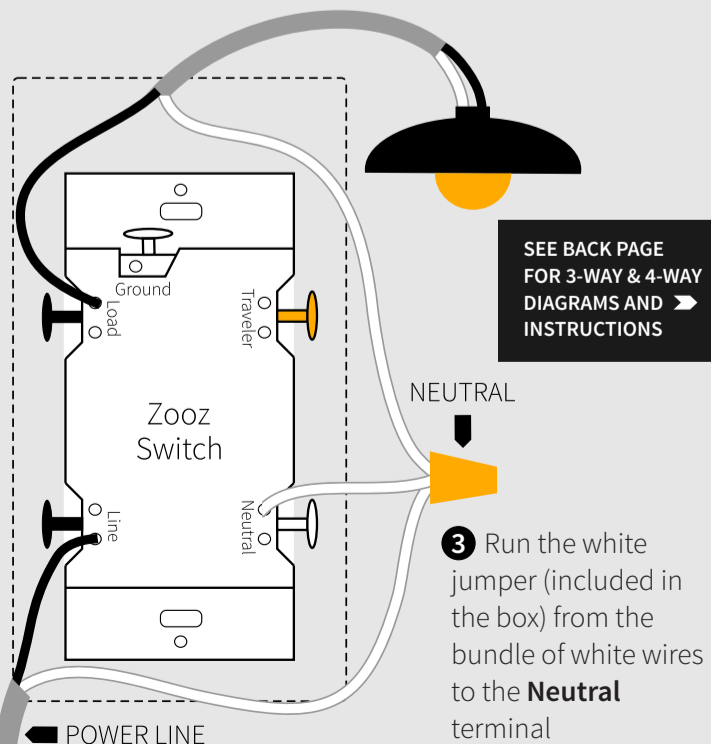
1. **CHECK THE LOAD:** lights only (150W for LED's, 600W for incandescent), DON'T CONNECT THIS SWITCH TO OUTLETS OR TUBE LIGHTS.
2. **POWER OFF:** turn the circuit power off in the breaker panel before you start. If installing in a multi-switch box with multiple circuits, turn power off at all of the circuits.
3. **CHECK THE WIRES:** mark load (most often black), line (most often black), neutral (most often white), and ground (most often bare). 14 AWG wires only! Don't rely exclusively on your multimeter to identify the wires!

NOT SURE WHAT YOU'RE SEEING? WE'LL HELP! SUPPORT.GETZOOZ.COM SEND US PICTURES OF YOUR SET-UP, BEFORE YOU DISCONNECT WIRES.

4. **REMOVE THE OLD SWITCH:** disconnect the wires and label them with the included label stickers.
5. **CONNECT THE Z-WAVE SWITCH:** follow all installation steps carefully. Wire the switch EXACTLY like in the diagram.

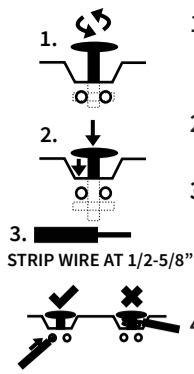
ZEN32 WIRING DIAGRAM FOR SINGLE POLE INSTALLATION

1. Insert the ground (bare) wire into the **Ground** terminal (not shown in the diagram)
2. Insert the power source wire to **Line** terminal and load wire to **Load** terminal. **Load and line CAN'T be swapped so make sure you identified them correctly!**



3. Run the white jumper (included in the box) from the bundle of white wires to the **Neutral** terminal

DON'T FORCE THE SCREWS. Look up to see how to install the wires correctly.



STRIP WIRE AT 1/2-5/8"

1. **UNSCREW:** carefully turn the screw counter clockwise to make space for the wire. DO NOT unscrew completely.
2. **PRESS DOWN:** once it's loose, press the screw down with your finger so it catches the thread.
3. **INSERT WIRE:** make sure the wire is perfectly straight, then insert it into the terminal while holding the screw down. DO NOT wrap wires around the terminal screws!
4. **TIGHTEN:** turn the screw clockwise to tighten the wire. DO NOT OVERTIGHTEN!

COMPLETE INSTALLATION

Secure your Z-Wave switch in the box with mounting screws, handling the wires with care. Install the wall plate and restore power to the circuit.

TEST THE SWITCH

The LED indicator should light up as soon as you turn the power back on if the switch (light) is OFF. Tap the switch button for ON and tap it again for OFF. **If the test fails, please check that:**

- power is fully restored to the circuit
- wiring matches the instructions **exactly**
- the load isn't too large and overheating the switch causing it to shut off

WARNING

- This product should be installed indoors upon completion of any building renovations.
- Prior to installation, the device should be stored in a dry, dust-and-mold-proof place.
- Do not install the switch in a place with direct sun exposure, high temperature, or humidity.
- Keep away from chemicals, water, and dust.
- Ensure the device is never close to any heat source or open flame to prevent fire.
- Ensure the device is connected to an electric power source that does not exceed the maximum load power.
- No part of the device may be replaced or repaired by the user.

Z-WAVE CONTROL



1. **ADD DEVICE** to your hub
Initiate inclusion (pairing) in the app (or web interface).
Not sure how? Scan one of the QR codes below for step-by-step instructions or get in touch: www.support.getzooz.com

2. Finalize inclusion at the switch.
TAP THE SWITCH BUTTON 3 TIMES QUICKLY if using traditional Z-Wave inclusion.

SCAN THE QR CODE / ENTER THE 5-DIGIT DSK if using the new SmartStart method.

The LED indicator will blink blue to signal communication and turn green for 3 seconds if inclusion is successful or turn red for 3 seconds if the pairing attempt fails.

NEED SOME HELP? ask@getzooz.com

Choose your hub and scan the QR code with your phone's camera. Then click on the link to access the step-by-step pairing instructions.



TROUBLESHOOTING

The switch won't add to your system? Try this:

1. Initiate **EXCLUSION** and tap the switch button 3 times quickly.
2. Tap the switch button **4-5 times quickly** when adding it.
3. Bring the gateway controller (hub) **closer** to the switch, it may be out of range.
4. Get troubleshooting tips for your hub at www.support.getzooz.com

The switch won't control the lights manually anymore? Try this:

1. Turn the power off at the breaker and check if a wire didn't get loose.
2. Exclude the switch from the hub or **reset** it in case manual control was accidentally disabled.
3. The load may be incompatible so try it with a single incandescent bulb.

EXCLUSION (REMOVING / UNPAIRING DEVICE)

1. Bring your Z-Wave gateway (hub) close to the switch if possible
2. Put the Z-Wave hub into **exclusion mode** (not sure how to do that? ask@getzooz.com)
3. Tap the switch button **3 times quickly** (the LED indicator will start blinking blue)
4. Your hub will confirm exclusion, the LED indicator on the switch will turn green for 3 seconds, and the device will disappear from your controller's device list

FACTORY RESET

If your primary controller is missing or inoperable, you may need to reset the device to factory settings. To reset the switch, **press and hold the switch button for 20 seconds** until the LED indicator starts flashing red. Release the button, and immediately after, **tap remote button 1 once** to complete the reset. The LED indicators on all buttons will flash red to confirm a successful reset.

NOTE: All previously recorded activity and custom settings will be erased from the device's memory.

There are 2 ways you can use the buttons on the Scene Controller to control other Z-Wave devices in your network:

1. Scene Control:

- Great to trigger preset scenes with multiple devices
- Perfect for smart bulb control and non Z-Wave devices
- Supports 1-tap, 2-tap, 3-tap, 4-tap, 5-tap, button held, and button released for each button

2. Direct Association

- Great to control other Z-Wave devices directly
- Perfect for Z-Wave smart bulb control or as a virtual add-on for existing Z-Wave switches and dimmers
- Use only for Z-Wave devices included with the same security level as your Scene Controller
- Supports 1-tap for on/off control (Group 2) and button held/released for dimming (Group 3), working in a sequence: press once to change state or hold to dim / increase brightness

Programming your Scene Controller using either of the above methods will depend on the capabilities and interface layout of your Z-Wave system.

Scan one of the below QR codes to get step-by-step instructions for your hub and if it's not listed, get in touch: ask@getzooz.com

Choose your hub and scan the QR code with your phone's camera. Then click on the link to access the instructions.



SmartThings



Hubitat



Home Assistant

Get more tutorials and helpful tips at www.support.getzooz.com

HOW IT WORKS?

SWITCH BUTTON: reports association Group 1 lifeline to the hub, Group 2 basic set, Group 3 multilevel; reports Scene 5 with 7 attributes (actions)

BUTTON 1: Group 4 basic set, Group 5 multilevel; Scene 1 (7 actions)

BUTTON 2: Group 6 basic set, Group 7 multilevel; Scene 2 (7 actions)

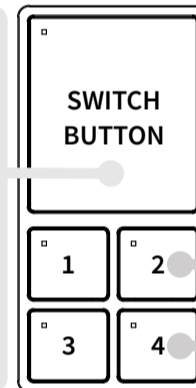
BUTTON 3: Group 8 basic set, Group 9 multilevel; Scene 3 (7 actions)

BUTTON 4: Group 10 basic set, Group 11 multilevel; Scene 4 (7 actions)

TAP x 1 for on/off of the connected load; Scene 5, pressed (or basic set for association Group 2)

TAP x 2, 3, 4, or 5 for Scene 5 multi-tap (or start level change); multilevel to Group 3

RELEASE for Scene 5, released (or multilevel stop level change)



TAP x 1 Scene 1-4 pressed (or basic set for Group 4, 6, 8, and 10)

TAP x 2, 3, 4, or 5 for Scene 1-4 multi-tap (or start level change); multilevel to Group 5, 7, 9, and 11

RELEASE for Scene 1-4 released (or multilevel stop level change)



This product can be included and operated in any Z-Wave network with other Z-Wave certified devices from other manufacturers and/or other applications. All non-battery operated nodes within the network will act as repeaters regardless of vendor to increase reliability of the network. This product features the latest Security 2 (S2) framework to remove smart home network hacking risks. This device is equipped with a unique authentication code for trusted wireless communication.

This is an ETL certified device. ETL, just like UL, is a Nationally Recognized Testing Laboratory. The ETL mark is proof of product compliance with North American safety standards.

WARRANTY

This product is covered under a 12-month limited warranty. To read the full warranty policy or file a warranty claim, please go to www.getzooz.com/warranty

IN NO EVENT SHALL ZOOZ OR ITS SUBSIDIARIES AND AFFILIATES BE LIABLE FOR ANY INDIRECT, INCIDENTAL, PUNITIVE, SPECIAL, OR CONSEQUENTIAL DAMAGES, OR DAMAGES FOR LOSS OF PROFITS, REVENUE, OR USE INCURRED BY CUSTOMER OR ANY THIRD PARTY, WHETHER IN AN ACTION IN CONTRACT, OR OTHERWISE EVEN IF ADVISED OF THE POSSIBILITY OF SUCH DAMAGES. ZOOZ'S LIABILITY AND CUSTOMER'S EXCLUSIVE REMEDY FOR ANY CAUSE OF ACTION ARISING IN CONNECTION WITH THIS AGREEMENT OR THE SALE OR USE OF THE PRODUCTS, WHETHER BASED ON NEGLIGENCE, STRICT LIABILITY, BREACH OF WARRANTY, BREACH OF AGREEMENT, OR EQUITABLE PRINCIPLES, IS EXPRESSLY LIMITED TO, AT ZOOZ'S OPTION, REPLACEMENT OF, OR REPAYMENT OF THE PURCHASE PRICE FOR THAT PORTION OF PRODUCTS WITH RESPECT TO WHICH DAMAGES ARE CLAIMED. ALL CLAIMS OF ANY KIND ARISING IN CONNECTION WITH THIS AGREEMENT OR THE SALE OR USE OF PRODUCTS SHALL BE DEEMED WAIVED UNLESS MADE IN WRITING WITHIN THIRTY (30) DAYS FROM ZOOZ'S DELIVERY, OR THE DATE FIXED FOR DELIVERY IN THE EVENT OF NONDELIVERY.

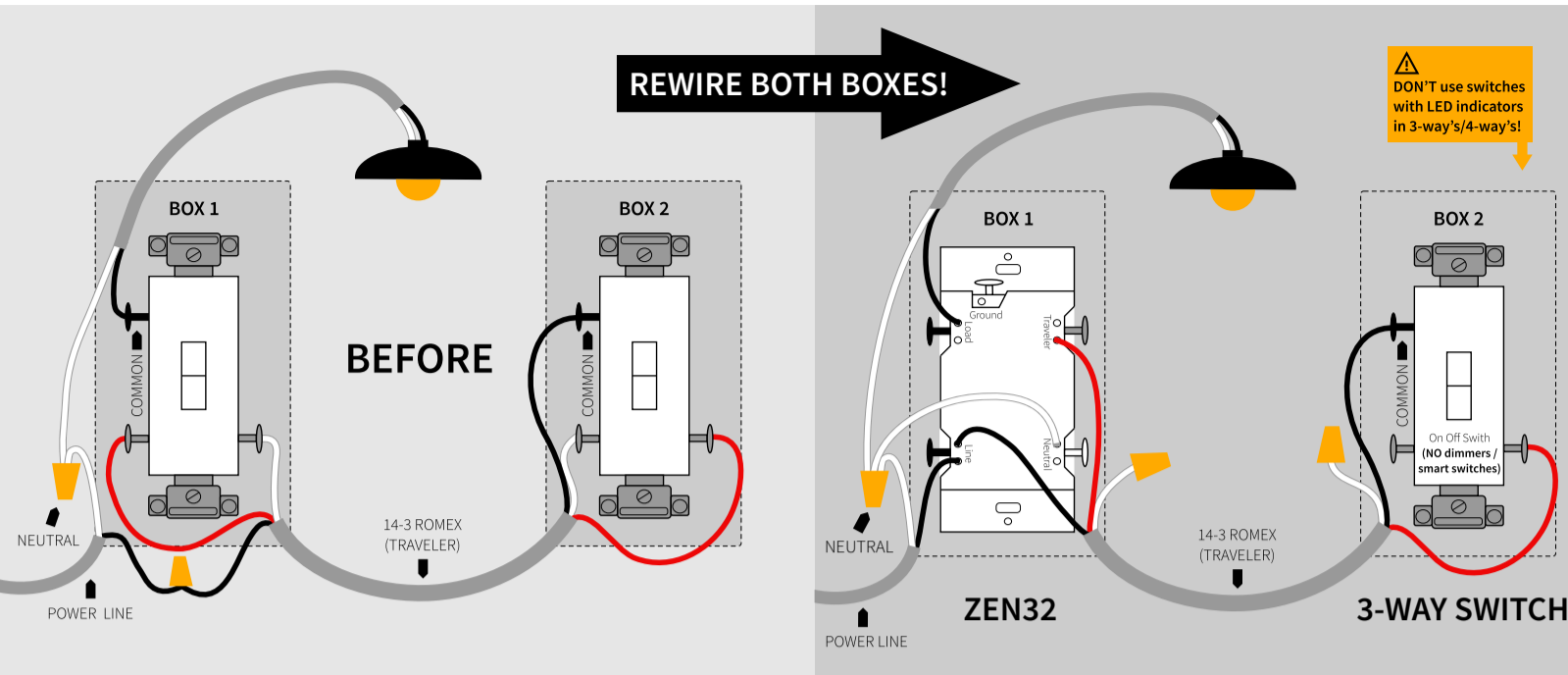
FCC NOTE
THE MANUFACTURER IS NOT RESPONSIBLE FOR ANY RADIO OR TV INTERFERENCE CAUSED BY UNAUTHORIZED MODIFICATIONS TO THIS EQUIPMENT. SUCH MODIFICATIONS COULD VOID THE USER'S AUTHORITY TO OPERATE THE EQUIPMENT. STORE INDOORS WHEN NOT IN USE. SUITABLE FOR DRY LOCATIONS ONLY. DO NOT IMMERSE IN WATER. NOT FOR USE WHERE DIRECTLY EXPOSED TO WATER.
This device complies with Part 15 of the FCC Rules.
Operation is subject to the following conditions:
1. This device may not cause harmful interference,
2. This device must accept any interference received, including interference that may cause undesired operation.
This equipment has been tested and found to comply with the limits for a Class B digital device, pursuant to part 15 of the FCC Rules.
These limits are designed to provide reasonable protection against harmful interference in a residential installation.
This equipment generates, uses and can radiate radio frequency energy and, if not installed and used according to instructions, may cause harmful interference to radio communications.
However, there is no guarantee that interference will not occur in any given installation.
If this equipment causes harmful interference to radio or television reception, the user may try to correct the interference by taking one or more of the following measures:
- Reorient or relocate receiving antenna
- Increase the separation between equipment and receiver
- Connect equipment into a separate outlet or circuit from receiver
- Consult the dealer or an experienced radio/TV technician for additional assistance

All brand names displayed are trademarks of their respective holders.
© Zooz 2021

ZEN32 WIRING DIAGRAMS FOR THE MOST COMMON 3-WAY INSTALLATIONS

For more diagrams or to request custom instructions go to support.getzooz.com

3-WAY DIAGRAM FOR 2-POINT CONTROL WITH ZEN32 AND REGULAR 3-WAY SWITCH: OPTION 1



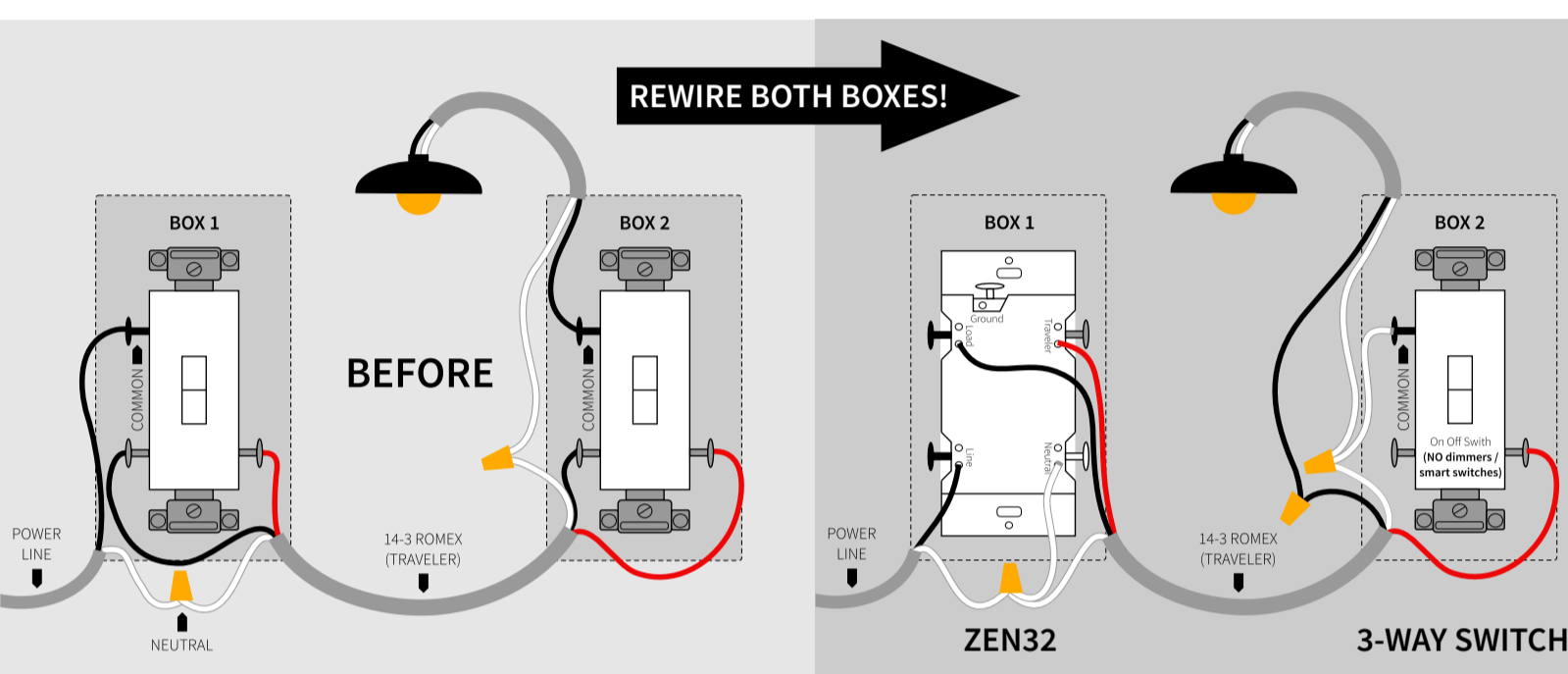
STOP!

Wire and screw position, as well as color codes are for illustration only. You should not follow the colors and positioning in the illustration blindly. Always identify all wires prior to installing Zooz switches and make sure you can match the diagrams to your set-up exactly. Don't experiment or attempt a "trial-and-error" installation for your own safety. Don't disconnect any wires before documenting your set-up in each box with detailed images!

NOTE!

If you are not comfortable identifying the wiring and completing the installation, please consult a licensed electrician. Make sure you have identified all wiring correctly before connecting the switch. If your wiring doesn't match any of the below diagrams, contact our support: ask@getzooz.com

3-WAY DIAGRAM FOR 2-POINT CONTROL WITH ZEN32 AND REGULAR 3-WAY SWITCH: OPTION 2



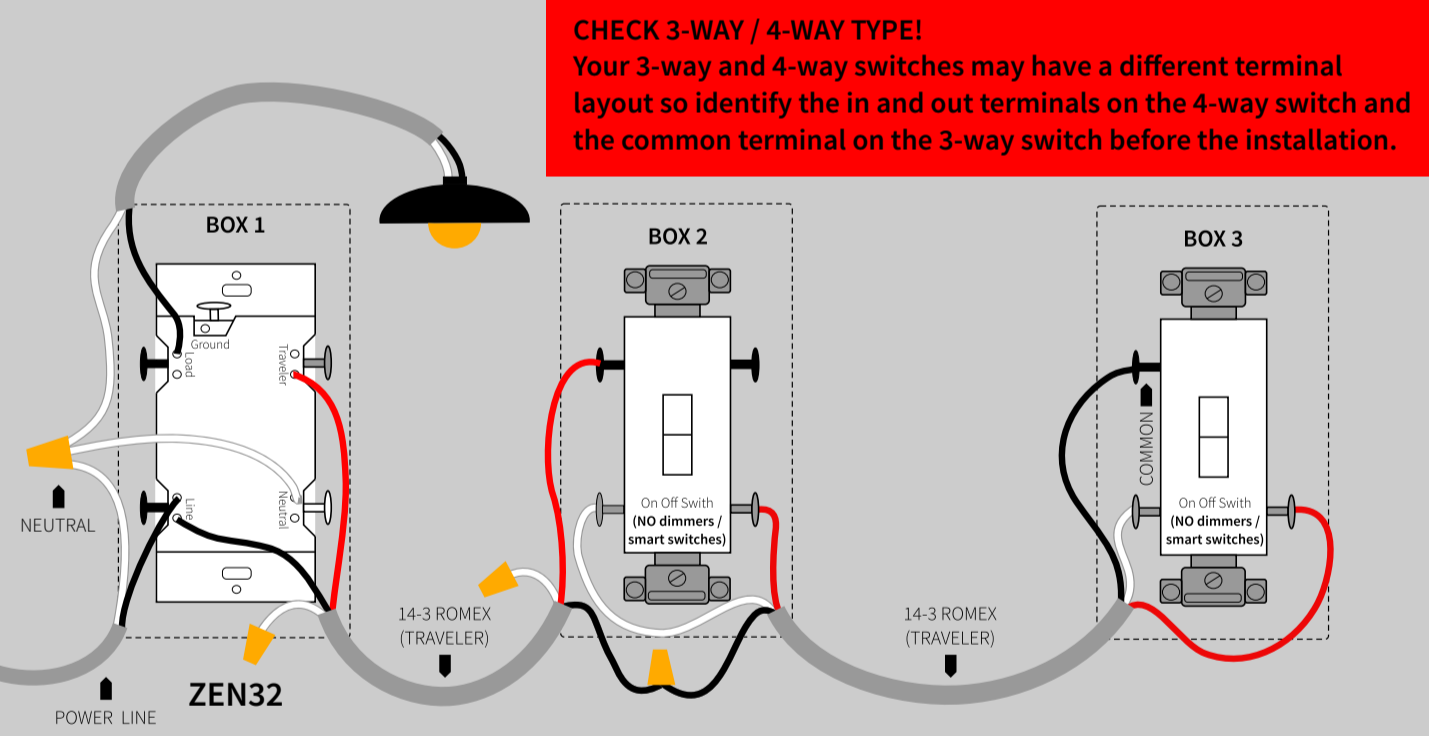
ON/OFF SWITCHES ONLY

Do not connect Zooz Z-Wave switches to an existing 3-way dimmer, illuminated switch, or an electronic add-on switch. Zooz switches can only be wired with mechanical on/off or momentary switches in a 3-way or 4-way setting! To simplify the diagrams, we did not include connections for the ground wire. Remember that all Zooz switches need to be wired according to the electrical code, with ground wire connected to the ground terminal.

POWER OFF!

Cut power to the circuit before handling the wiring. Diagrams and instructions in this manual are for the ZEN32 model ONLY! Always follow the correct diagram for your own safety and to avoid equipment damage. Other Zooz switches may wire differently!

ZEN32 4-WAY INSTALLATION WIRING DIAGRAM (LINE AND LOAD MUST BE IN THE SAME BOX)



EACH BOX NEEDS TO BE WIRED ACCORDING TO THE 4-WAY DIAGRAM.

Don't follow the wire colors blindly - make sure you understand the role of each wire before moving forward with the installation. The colors used in this diagram are just an example of the many scenarios you'll come across in multi-point control set-ups.

Follow this diagram ONLY if you confirmed you have direct connection to power and light in the same box. If they're in separate boxes, ask us about using the ZEN32 switch with ZAC99 momentary switches in 4-way and 5-way installations.

ask@getzooz.com

LOOKING FOR ADVANCED SETTINGS? HERE THEY ARE!

Here is a selection of settings available to customize your switch:

- LED Indicator behavior, color, brightness:
- Smart Bulb Mode (disable the relay)
- On/off status for the switch after power failure
- Auto turn-on / turn-off timer for the switch

Scan the QR code for a full list of parameters and look to the right for how to access them on your hub:



Choose your hub and scan the QR code with your phone's camera. Then click on the link to learn how to access and change the advanced settings for the switch on your hub.



SmartThings



Hubitat



Home Assistant



Vera

NEED HELP?

If you're having trouble reading the diagrams or don't see your wiring set-up here, get in touch! We have **more 3-way, 4-way, and 5-way diagrams** and instructions. There are many ways to wire multi-point control set-ups so unless you can match your wiring to the diagrams here, please don't attempt the installation for your own safety.

ask@getzooz.com

www.support.getzooz.com



USE IT WITH SMART BULBS!

Want to control your smart bulb from a wall switch without cutting power to it every time you turn the light off from the switch? We'll tell you how, just ask!