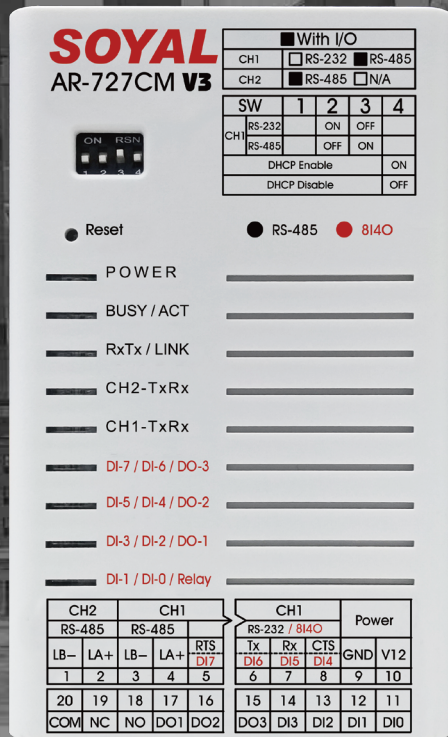


AR-727-CM-IO-0804M

Modbus Gateway Serial-to-Ethernet Server with I/O Module



Multi-Modbus Protocol Supported

TCP/IP to Wiegand
 TCP/IP to Serial
 To get status of on board I/O, Modbus TCP or Modbus RTU over TCP are supported
 Modbus TCP to Modbus RTU Auto Conversion (Applicable for Ethernet & WIFI)

TCP Connection LED Indicator

ACT led indicating TCP connection status for visual check and trouble shooting.

Surge Protection

Power: Bi-directional avalanche breakdown device
 RS485: Bi-directional avalanche breakdown device

Simulation of Wiegand Output

DO-1 is able to simulate WG Data:1, and DO-2 is able to simulate WG Data:0, supporting WG output up to 128 bits

Features



Remote I/O Function

With I/O logic for conditional control, suitable for remote monitoring and control



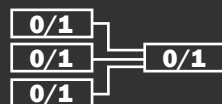
Two Channels Transmission & Receipt

Built-in two channels with buffer 1K for each transmission and receipt without missing data, suitable for transmission of massive data



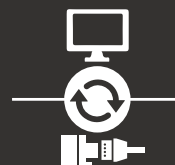
IoT Application

Wide applications in IoT monitoring, Factory Automation or remote monitoring equipment.



SOYAL Protocol

Support SOYAL Protocol, integrated with SOYAL access control and SCADA. Support all-door release when fire alarm is triggered



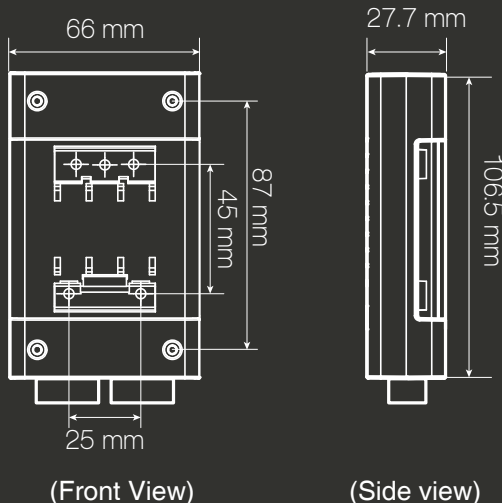
Multi-data conversion

Supporting TCP/IP to WG, TCP/IP to Serial, TCP/IP to I/O.

SPECIFICATION

Model No.		AR-727-CM-IO-0804M	
Hardware	Interface	Ethernet	10/100 Mbps Base T Ethernet <--> RS485
		Serial port (CH1/CH2)	RS485 *2 Baud Rate 2400 bps - 115200 bps (By order: RS232, RS232+RS485) Auto detect support TCP/Server、TCP/Client、UDP Mode
		Digital Inputs/Outputs or WG port	8 Digital Input / 4 Digital Outputs: 1 Relay Output + 3 DO or DO-1 is able to simulate WG Data:1, and DO-2 is able to simulate WG Data:0, supporting WG output up to 128 bits. Auto add even and odd parity bit and various format, etc.
	Protocol	ModBus-TCP, ARP, IP, TCP Client, UDP, ICMP, HTTP, DHCP, NetBIOS	
	Serial Buffer	1K each channel	
	LED Indicator	Power: Tx/Rx, D.O./D.I	
	Watchdog Function	Yes	
	Surge Suppression	400W peak power dissipation. Clamping time < 1 picosecond (theoretical) Power: bi-directional avalanche breakdown device. RS485 bi-directional avalanche breakdown device.	
	Fuses	Power & RS485 both with PTC Protector	
	Isolation	optical 5 kV	
	Power Supply	9-24 VDC	
	Power Consumption	<2W	
	Dimension (mm)	106.5(W)x66(H)x27.7(D)	
Weight (g)	approx. 120		
Software	OS Supported	Windows 7 / 8 / 10, Win Server 2008/2012/2016	
	Network / Device setting	701Server, 701Client, HTTP Web browser	
Environment	Operating Temperature	-20°C ~ +70°C	
	Storage Temperature	-40°C to +75°C	
	Operating Humidity	0%~90% (non-condensing)	
	Storage Humidity	0%~95% (non-condensing)	

INSTALLATION(mm)



HOW TO ORDER

AR-727-CM-IO-0804M

Controller Option
IO=I/O Module Series

Input Qty / Output Qty
0804=8 Input & 4 Output

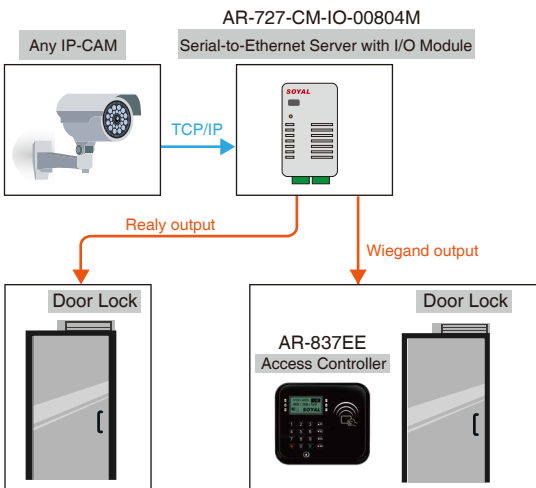
Output Type
M=Mosfet

APPLICATION & STRUCTURE DIAGRAM

● Seamless integration with Face Recognition & Access Control System

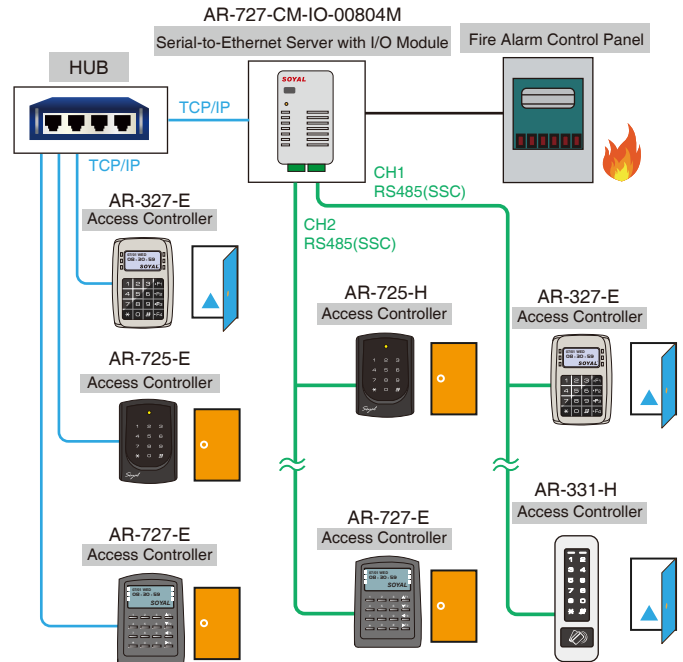
The most flexible way to integrate any IP-Based devices, with AR-727-CM-IO-0804M Serial-to-Ethernet Server with I/O Module (with Digital Input/Output), such as IP-CAM, IP-Face Recognition, IP-LPR (License Plate Recognition), I/O trigger electric lock, etc. No need other software.

Supporting TCP/IP to Wiegand output. Help easy integration among surveillance system and access control system as total solution with any brand.



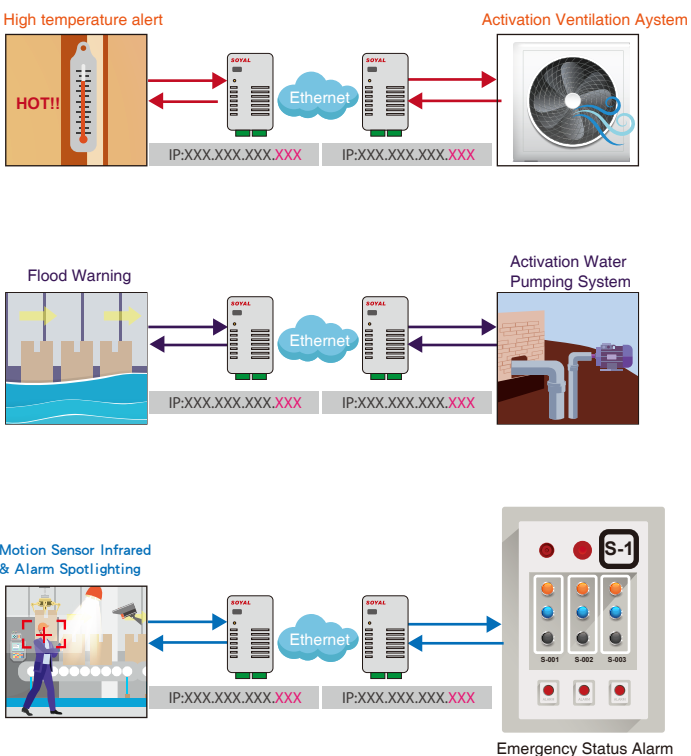
● Fire-Alarm release all doors

Providing various of customized firmware to meet all customer needs, eg. release all doors or specified doors via RS485 or Ethernet once fire-alarm event



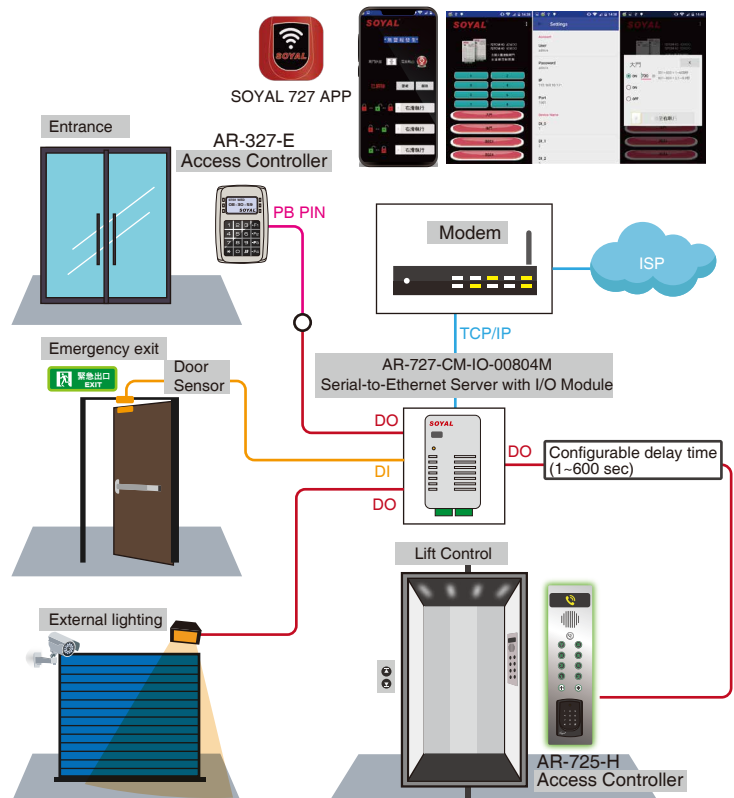
● Remotely I/O linkage control application

AR-727-CM-IO-0804M can fulfill the linkage control in different locations such as trigger DI in location A; linkage DO in location B. Suited to remote control equipment or alarm warning linkage.



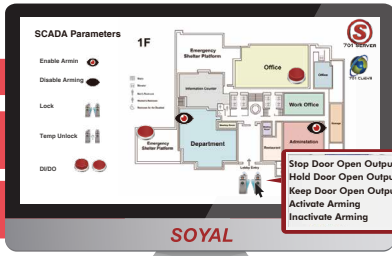
● Mobile APP - I/O control lighting, electric lock & door contact status

SOYAL 727APP working with AR-727-CM-IO-0804M module that has built-in 8 digital inputs and 4 digital outputs, each I/O name can be self-defined, showing status of each DI; setting Normal Open/Normal Close of each DO with delay time (0.1~600 seconds) to fulfill smart life style through mobile APP.



PERIPHERALS / ACCESSORIES

SCADA Solutions



Remotely control I/O status

Set up abnormal events indicator for pop-up message

Support various devices on one Scada Mapping

New icon status and mapping is available

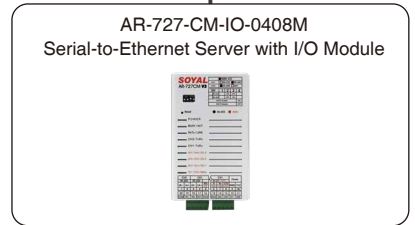
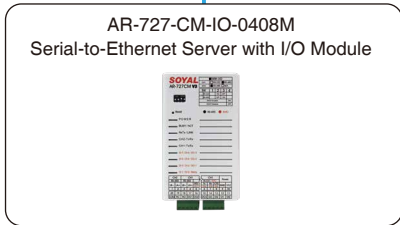
Create multiple windows for each Scada Mapping

Create your own icon and mapping



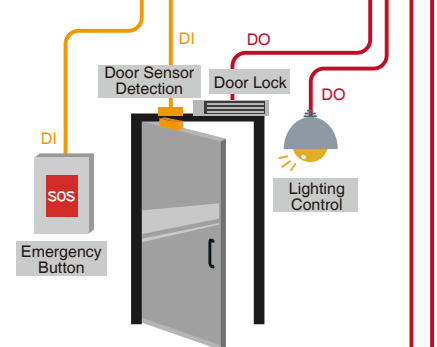
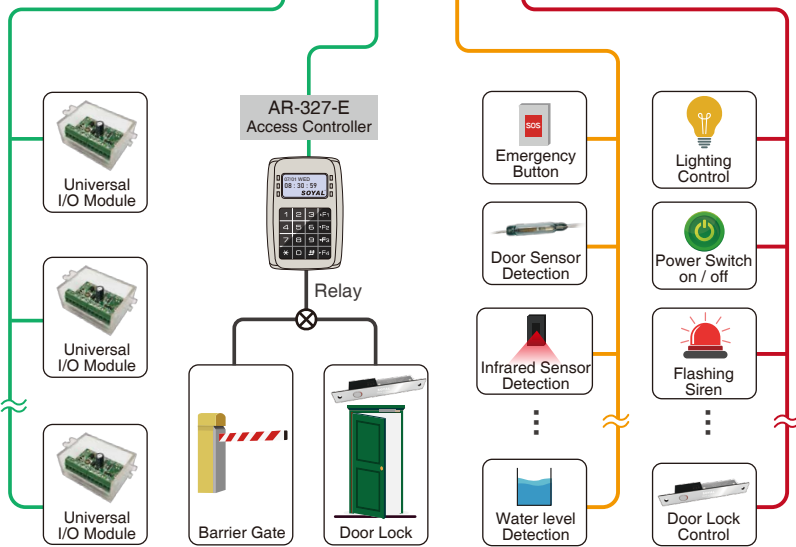
SOYAL 727 APP

Ethernet

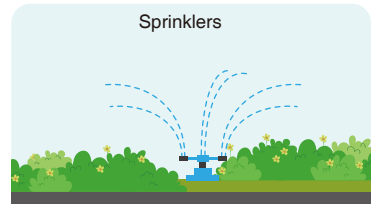


CH1 RS485 CH2 RS485 DI DO

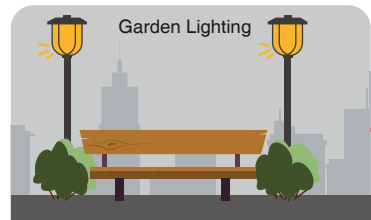
DI DO



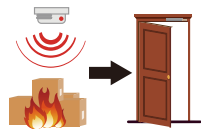
USB serial I/O control application



Sprinklers



Garden Lighting



TCP/IP convert to RS-485 (2 Channel) + Release all door locks in fire event



Remote I/O monitoring and control

*SSC(SOYAL SECURITY COMMUNICATION)



More FAQ