

Star Wars Theme

John Williams

March

Musical score for Violoncello 1, 2, 3, and 4, measures 1 through 6. The score is in bass clef with a key signature of one sharp (F#). Violoncello 1 has a triplet of eighth notes in the first measure, followed by quarter notes and eighth notes. Violoncello 2 and 3 play quarter notes and eighth notes. Violoncello 4 plays a steady eighth-note accompaniment.

Musical score for Violoncello 1, 2, 3, and 4, measures 7 through 12. Measure 7 begins with a new triplet in Violoncello 1. The parts continue with various rhythmic patterns, including eighth notes and quarter notes, with some triplets in Violoncello 2 and 3.

Musical score for Violoncello 1, 2, 3, and 4, measures 13 through 16. Measure 13 starts with a key signature change to one flat (Bb). The score features complex rhythmic patterns, including many triplets and sixteenth notes across all four parts.

18

Four staves of music in bass clef with a key signature of one sharp (F#). The first staff (Vc.) features a melodic line with triplets of eighth notes. The second and third staves (Vc.) provide harmonic support with chords and single notes. The fourth staff (Vc.) plays a steady eighth-note accompaniment. Measure numbers 18 through 23 are indicated above the first staff.

24

Four staves of music in bass clef with a key signature of one sharp (F#). The first staff (Vc.) continues the melodic line with triplets and a long note with a fermata. The second and third staves (Vc.) feature chords and notes with fermatas. The fourth staff (Vc.) continues the eighth-note accompaniment. Measure numbers 24 through 29 are indicated above the first staff.

Star Wars Theme

John Williams

March

Measures 1-6 of the Star Wars Theme in bass clef, key of D major. Measure 1 features a triplet of eighth notes (D4, E4, F4) with accents. Measures 2-6 continue with a rhythmic pattern of eighth notes and quarter notes, including another triplet of eighth notes in measure 4 and a triplet of eighth notes in measure 6.

Measures 7-12 of the Star Wars Theme in bass clef, key of D major. Measures 7-9 feature a triplet of eighth notes (D4, E4, F4). Measures 10-12 continue with quarter and eighth notes, including a quarter rest in measure 11.

Measures 13-18 of the Star Wars Theme in bass clef, key of D major. Measure 13 has a flat sign (Bb4). Measures 14-18 include a triplet of eighth notes (D4, E4, F4) in measure 15, a triplet of eighth notes (G4, A4, Bb4) in measure 16, and a triplet of eighth notes (D4, E4, F4) in measure 18.

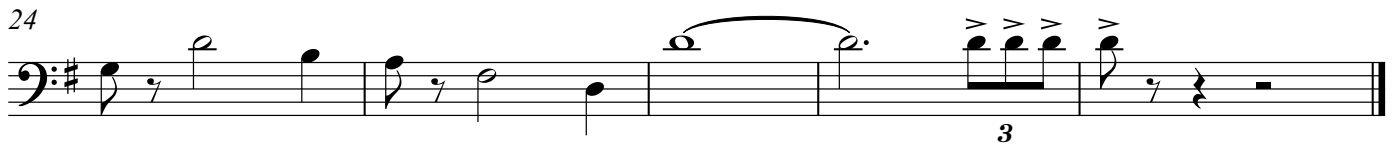
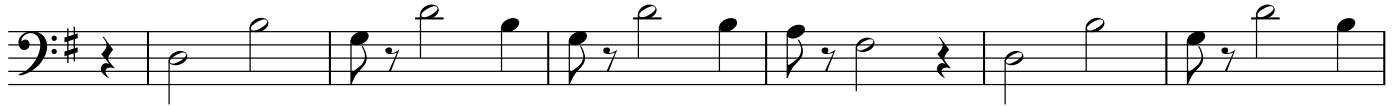
Measures 19-23 of the Star Wars Theme in bass clef, key of D major. Measures 19-21 feature a triplet of eighth notes (D4, E4, F4). Measures 22-23 continue with quarter and eighth notes, including a triplet of eighth notes (D4, E4, F4) in measure 23.

Measures 24-28 of the Star Wars Theme in bass clef, key of D major. Measures 24-25 feature a triplet of eighth notes (D4, E4, F4). Measure 26 has a long note with a slur. Measures 27-28 feature a triplet of eighth notes (D4, E4, F4) with accents.

Star Wars Theme

John Williams

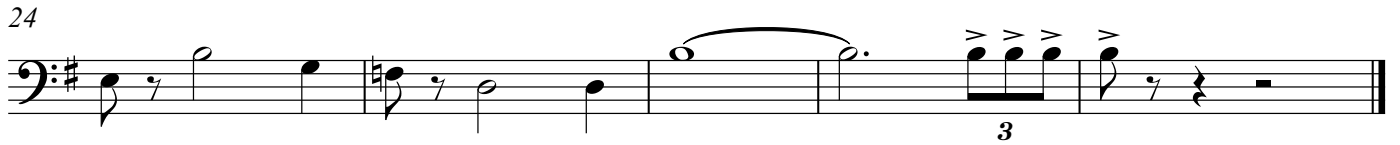
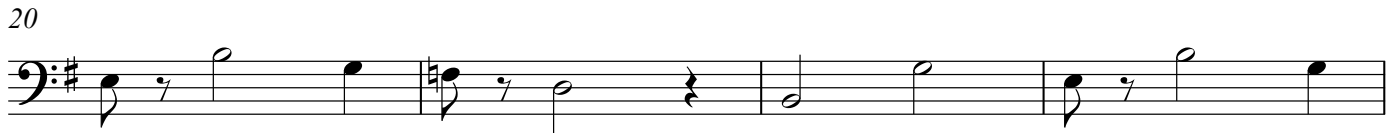
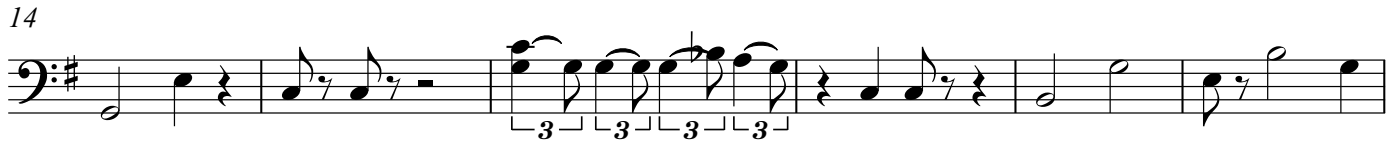
March



Star Wars Theme

John Williams

March



Star Wars Theme

John Williams

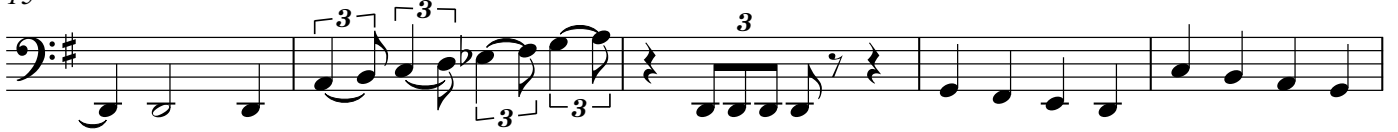
March



8



15



20



25

