

Muppet Show Theme

Sam Pottle (arr. West)

Musical score for Cello I, II, III, and IV, measures 1 through 6. The score is in 4/4 time and features a bass clef. Cello I plays a melodic line with eighth and sixteenth notes. Cello II provides a harmonic accompaniment with eighth notes and some accidentals. Cello III and IV play a steady bass line with quarter and eighth notes.

Musical score for Cello I, II, III, and IV, measures 7 through 12. The score continues the themes established in the first system. Cello I has a more active role with sixteenth-note passages. Cello II continues with a similar accompaniment. Cello III and IV maintain their bass line with some harmonic changes.

Musical score for Cello I, II, III, and IV, measures 13 through 18. This system concludes the piece with a final melodic flourish for Cello I and a sustained bass line for the other cellos.

19

Cello I
Cello II
Cello III
Cello IV

This system of music covers measures 19 through 24. It features four staves for Cello I, II, III, and IV. Cello I begins with a melodic line of eighth notes in measure 19, followed by a rest and then a half note with a sharp sign. Cello II has a rest in measure 19, followed by a half note with a sharp sign. Cello III plays a melodic line of eighth notes with slurs. Cello IV plays a rhythmic accompaniment of eighth notes. The system concludes with a double bar line at the end of measure 24.

25

Cello I
Cello II
Cello III
Cello IV

This system of music covers measures 25 through 31. Cello I plays a melodic line of half notes with a sharp sign. Cello II plays a similar melodic line. Cello III continues with a melodic line of eighth notes with slurs. Cello IV continues with a rhythmic accompaniment of eighth notes. The system concludes with a double bar line at the end of measure 31.

32

Cello I
Cello II
Cello III
Cello IV

This system of music covers measures 32 through 37. Cello I plays a melodic line of eighth notes with slurs. Cello II plays a melodic line of eighth notes with a flat sign. Cello III plays a melodic line of half notes with a sharp sign. Cello IV continues with a rhythmic accompaniment of eighth notes. The system concludes with a double bar line at the end of measure 37.

38

Cello I
Cello II
Cello III
Cello IV

This system contains measures 38 through 43. Cello I plays a melodic line with eighth-note patterns and slurs. Cello II has a sparse accompaniment with some rests. Cello III and Cello IV provide a rhythmic and harmonic foundation with eighth-note patterns and slurs.

44

Cello I
Cello II
Cello III
Cello IV

This system contains measures 44 through 49. Cello I continues with a melodic line, featuring a prominent half-note chord in measure 44. Cello II follows a similar pattern with half notes. Cello III and Cello IV continue their accompaniment with eighth-note patterns and slurs.

51

Cello I
Cello II
Cello III
Cello IV

This system contains measures 51 through 56. Cello I has a melodic line with eighth notes and slurs. Cello II plays a steady accompaniment of eighth notes. Cello III and Cello IV continue their accompaniment with eighth-note patterns and slurs.

57

Cello I

Cello II

Cello III

Cello IV

63

Cello I

Cello II

Cello III

Cello IV

68

Cello I

Cello II

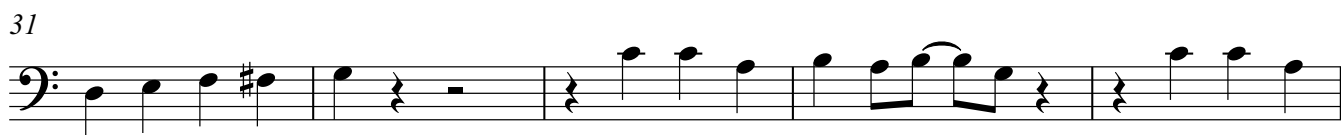
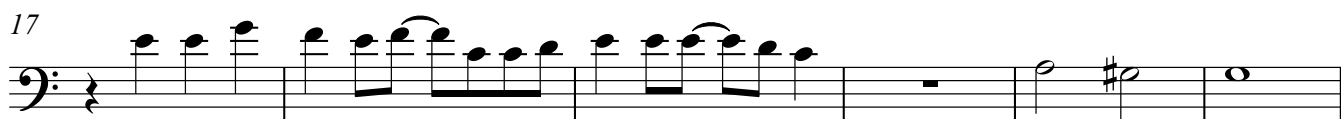
Cello III

Cello IV

Cello I

Muppet Show Theme

Sam Pottle (arr. West)



41



49



55



60



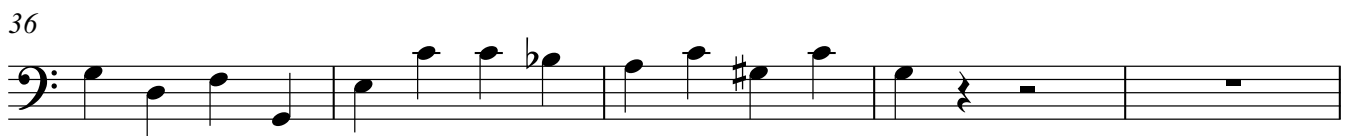
66



Cello II

Muppet Show Theme

Sam Pottle (arr. West)



41



49



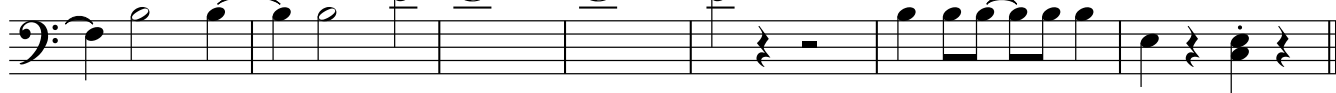
55



60



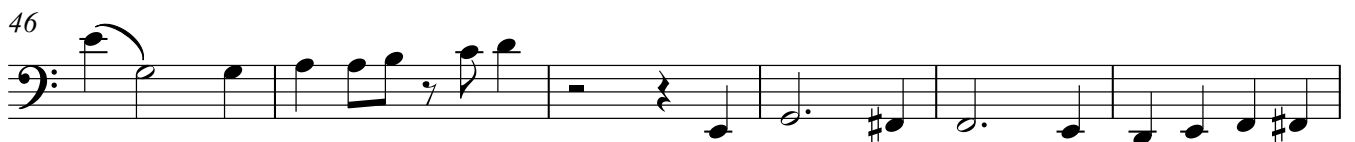
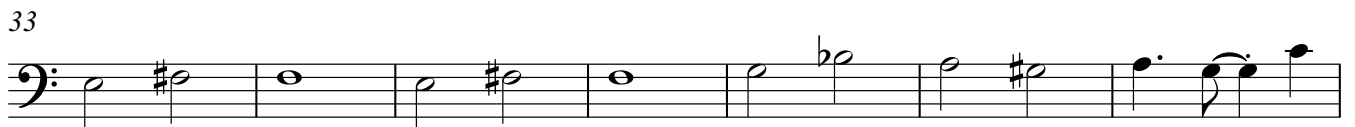
65



Cello III

Muppet Show Theme

Sam Pottle (arr. West)



65



Cello IV

Muppet Show Theme

Sam Pottle (arr. West)



7



13



19



25



31



37



43



49



55



61



67

