



THERMOSTATIC SHOWER Series INSTALLATION GUIDE

A2

CONTENT

Installation Condition	1
Product photo	2
Product List	3-5
Shower head installation	6
Handheld shower head installation	6
Massage shower installation	6
Shower arm installation	6
3 way luxury thermostatic valve installation	7
4 way luxury thermostatic valve installation	8
Digital valve installation	9-10
Install the hand show holder	11
Care and maintenance	12

Installation Condition



1. Refer to the (Standard Part List) when unpacking , check all parts available .
2. Do not disassemble mixer body by yourself.
3. Connect inlet hoses to supply valves.
4. Make sure inlet pipes and supply valves have been installed and cleaned, also ensure no impurities in pipeline.
5. After installation , check all joints for leakages.
6. Suggest don't fit the faucet in the severely corrosive environments.



Product photo



Wall-mounted luxury digital display shower set 3 Page



Wall-mounted luxury digital display shower set 3 Page

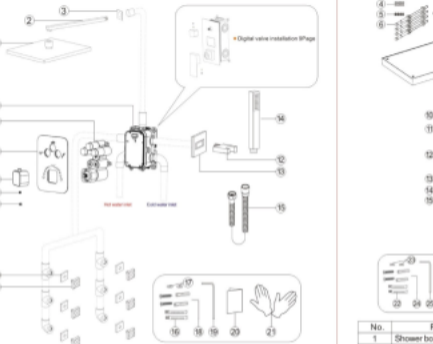


Coding-mounted luxury thermostatic shower set 5 Page



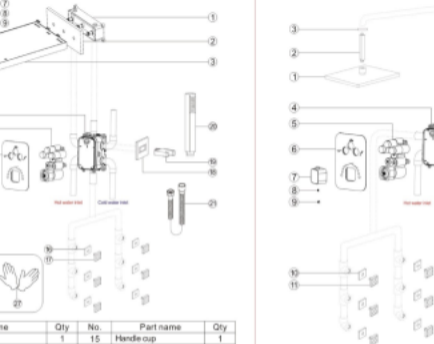
Four-function luxury thermostatic shower set 4 Page 5 Page

Product List



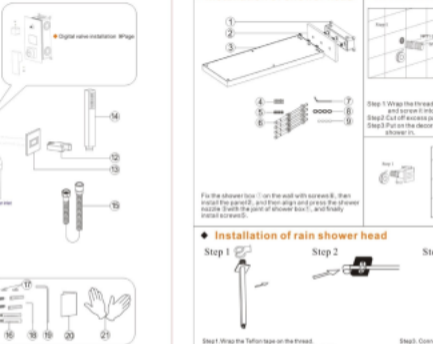
No.	Part name	Qty	No.	Part name	Qty
1	Shower head	1	11	Message shower	6
2	Shower arm	1	12	Holder cup	1
3	Shower arm cup	1	13	Hand show holder	1
4	Embedded box	1	14	Shower hand	1
5	Shower valve	1	15	Shower hose	1
6	Panel	1	16	Screw	2
7	Handle	1	17	Valve gasket spare parts	2
8	Valve screw	1	18	Wrench	1
9	Handle cup	1	19	Wrench	1
10	Message shower cup	6	20	Instruction manual	1
			21	Gloves	1

Product List



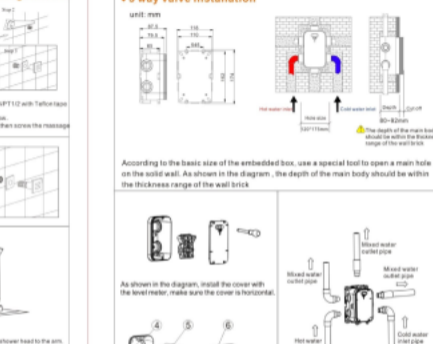
No.	Part name	Qty	No.	Part name	Qty
1	Shower box	1	11	Message shower	6
2	Panel	1	12	Holder cup	1
3	Shower head	1	13	Hand show holder	1
4	Embedded box	1	14	Shower hand	1
5	Shower valve	1	15	Shower hose	1
6	Panel	1	16	Screw	2
7	Handle	1	17	Valve gasket spare parts	2
8	Valve screw	1	18	Wrench	1
9	Handle cup	1	19	Wrench	1
10	Message shower cup	6	20	Instruction manual	1
			21	Gloves	1

Product List



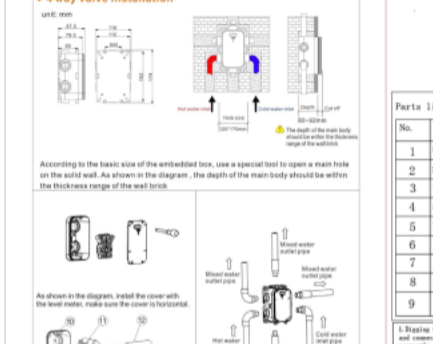
No.	Part name	Qty	No.	Part name	Qty
1	Shower box	1	11	Message shower	6
2	Shower arm	1	12	Holder cup	1
3	Shower arm cup	1	13	Hand show holder	1
4	Embedded box	1	14	Shower hand	1
5	Shower valve	1	15	Shower hose	1
6	Panel	1	16	Screw	2
7	Handle	1	17	Valve gasket spare parts	2
8	Valve screw	1	18	Wrench	1
9	Handle cup	1	19	Wrench	1
10	Message shower cup	6	20	Instruction manual	1
			21	Gloves	1

Product List



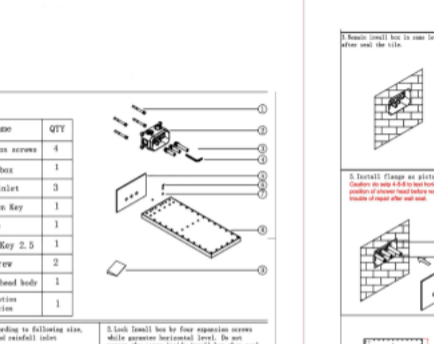
No.	Part name	Qty	No.	Part name	Qty
1	Shower box	1	11	Message shower	6
2	Panel	1	12	Holder cup	1
3	Shower head	1	13	Hand show holder	1
4	Embedded box	1	14	Shower hand	1
5	Shower valve	1	15	Shower hose	1
6	Panel	1	16	Screw	2
7	Handle	1	17	Valve gasket spare parts	2
8	Valve screw	1	18	Wrench	1
9	Handle cup	1	19	Wrench	1
10	Message shower cup	6	20	Instruction manual	1
			21	Gloves	1

Product List



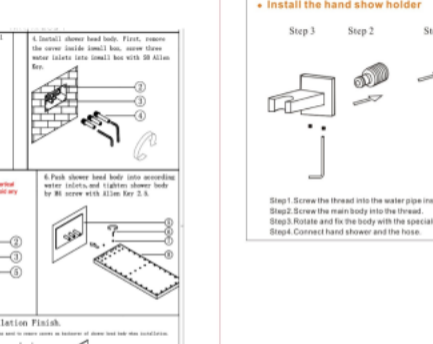
No.	Part name	Qty	No.	Part name	Qty
1	Shower box	1	11	Message shower	6
2	Panel	1	12	Holder cup	1
3	Shower head	1	13	Hand show holder	1
4	Embedded box	1	14	Shower hand	1
5	Shower valve	1	15	Shower hose	1
6	Panel	1	16	Screw	2
7	Handle	1	17	Valve gasket spare parts	2
8	Valve screw	1	18	Wrench	1
9	Handle cup	1	19	Wrench	1
10	Message shower cup	6	20	Instruction manual	1
			21	Gloves	1

Product List



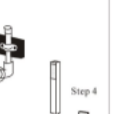
No.	Part name	Qty	No.	Part name	Qty
1	Shower box	1	11	Message shower	6
2	Panel	1	12	Holder cup	1
3	Shower head	1	13	Hand show holder	1
4	Embedded box	1	14	Shower hand	1
5	Shower valve	1	15	Shower hose	1
6	Panel	1	16	Screw	2
7	Handle	1	17	Valve gasket spare parts	2
8	Valve screw	1	18	Wrench	1
9	Handle cup	1	19	Wrench	1
10	Message shower cup	6	20	Instruction manual	1
			21	Gloves	1

Product List



No.	Part name	Qty	No.	Part name	Qty
1	Expansion screws	4			
2	Small box	1			
3	Water inlet	3			
4	SB Allen Key	1			
5	Flange	1			
6	Allen Key 2.5	1			
7	M4 screw	2			
8	Shower head body	1			
9	Installation Instruction	1			

Care and Maintenance



- In order to keep the mixer surface bright , please clean the mixer regularly.
- Rinse faucet with clean water and wipe with soft cotton cloth.
- Avoid using cleaning powder ,harsh cleaning chemicals, brushes, and cloth with coarse surface to prevent scratching and corrosion.
- Do not use acid cleaner to clean the faucet as it may cause surface corrosion of the faucet. If the faucet comes into contact with harmful acid substances, please rinse it with water immediately.
- If a large-scale clean-up is necessary, follow these procedures:
1. Use clean water and soft cloth to remove dirt on the surface as much as possible.
 2. Use one of the following cleaners to remove dirt on the surface
 - Mild liquid cleaner.
 - Colorless glass cleaner, powder cleaner which does not have abrasive function and can be dissolved completely.
 - Polish liquid which does not have abrasive function.
 3. After cleaning, remove the cleansing agent with clean water completely and wipe with soft cotton cloth.

Care and Maintenance



- In order to keep the mixer surface bright , please clean the mixer regularly.
- Rinse faucet with clean water and wipe with soft cotton cloth.
- Avoid using cleaning powder ,harsh cleaning chemicals, brushes, and cloth with coarse surface to prevent scratching and corrosion.
- Do not use acid cleaner to clean the faucet as it may cause surface corrosion of the faucet. If the faucet comes into contact with harmful acid substances, please rinse it with water immediately.
- If a large-scale clean-up is necessary, follow these procedures:
1. Use clean water and soft cloth to remove dirt on the surface as much as possible.
 2. Use one of the following cleaners to remove dirt on the surface
 - Mild liquid cleaner.
 - Colorless glass cleaner, powder cleaner which does not have abrasive function and can be dissolved completely.
 - Polish liquid which does not have abrasive function.
 3. After cleaning, remove the cleansing agent with clean water completely and wipe with soft cotton cloth.