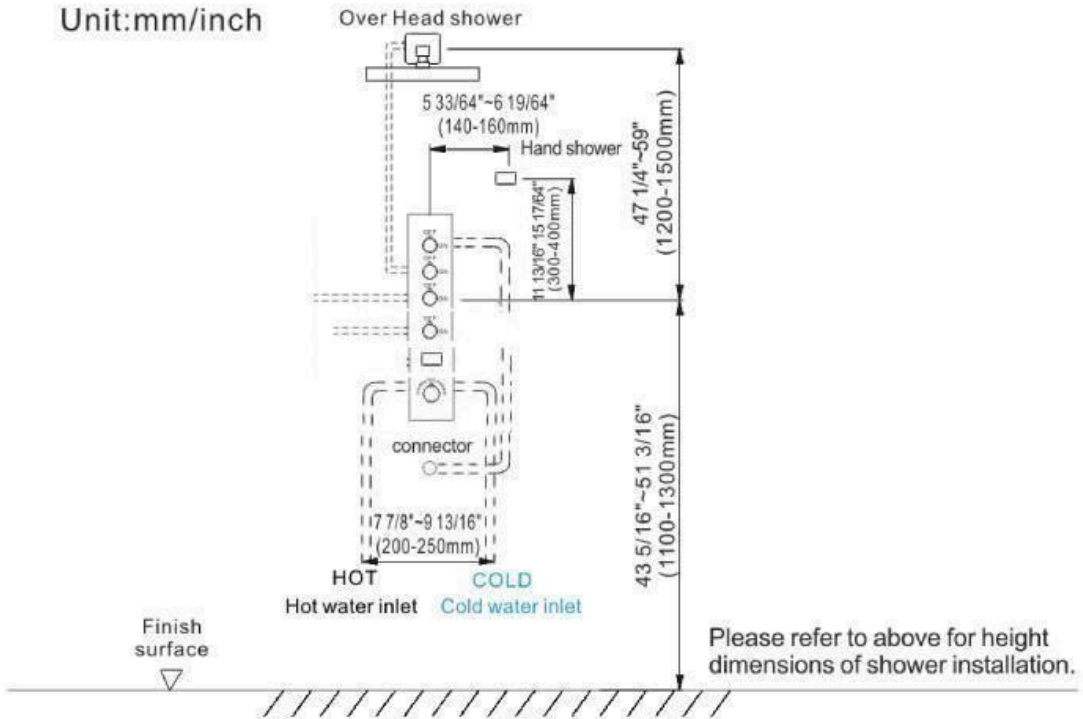


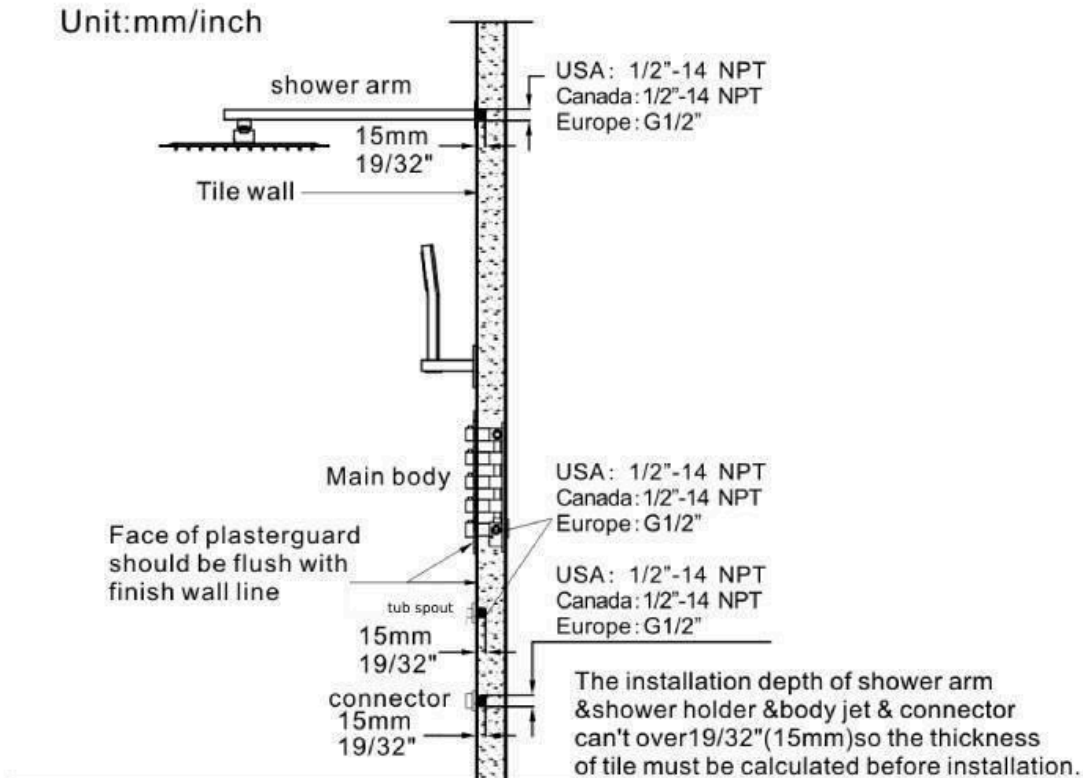
◆ **INSTALLATION SHOWER SET SIZE & WATER PIPE LINE REFERENCE**

Unit:mm/inch



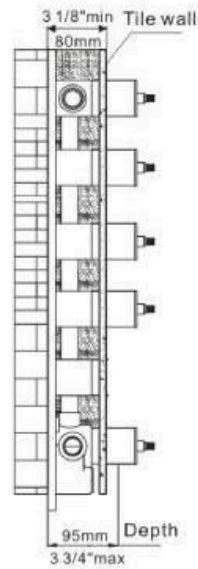
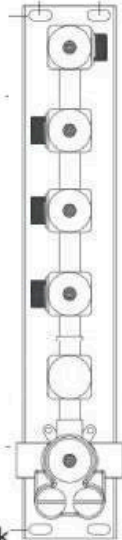
◆ **INSTALLATION DEPTH OF SHOWER ARM & SHOWER HOLDER & BODY JET**

Unit:mm/inch



◆ **INSTALLATION DEPTH OF MAIN BODY**

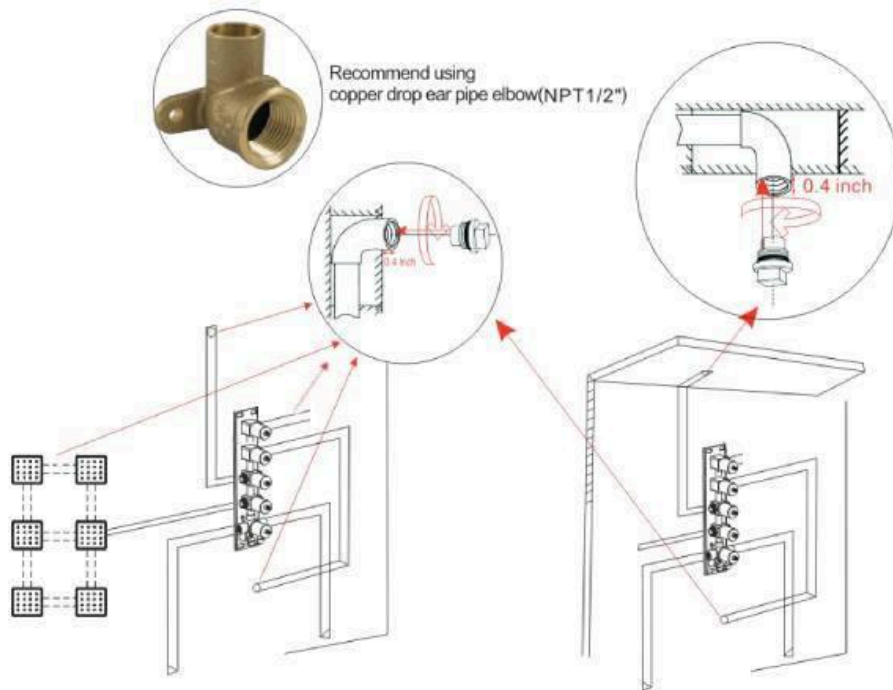
Unit:mm/inch



⚠ The depth of main body should be in the thickness range of wall tile

- 1: Including the thickness of ceramic tile is less than or equal to the thickness of valve 3 3/4" (95mm), so the thickness of tile must be calculated before installation.
- 2: Installation Main body depth not less than 3 1/8"(80mm)min and not more than 3 3/4" (95mm) Max, Otherwise, the panel cannot be installed.

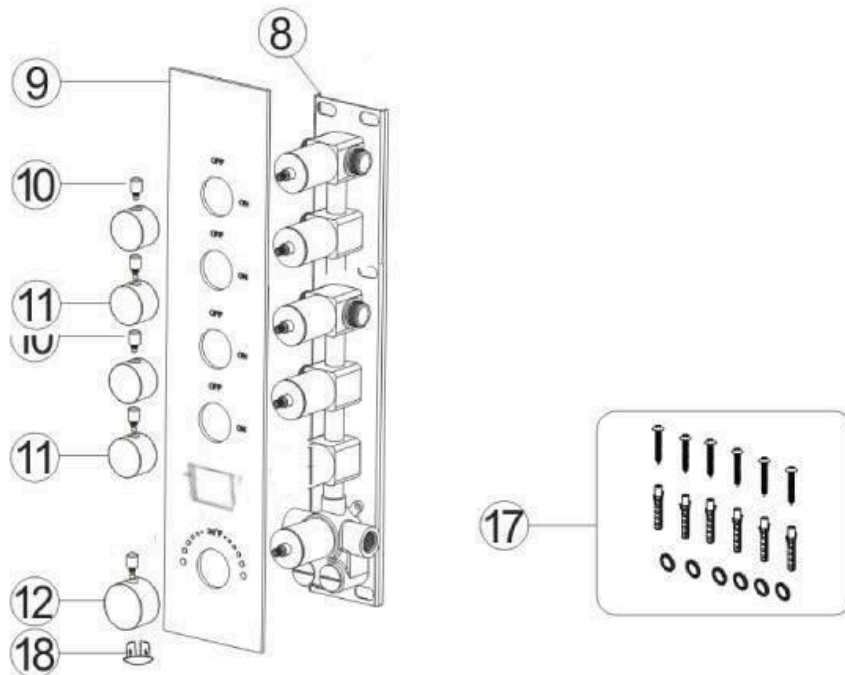
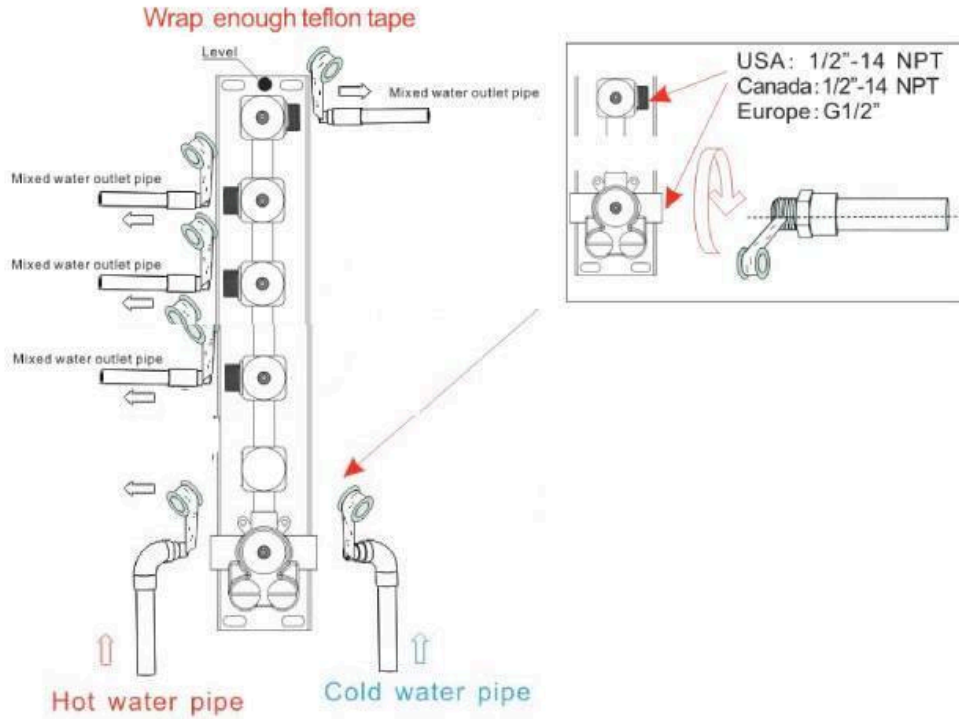
◆ **WALL MOUNTED/CEILING MOUNTED INSTALLATION BEFORE TILING**



- 1: Recommend using Copper drop ear pipe elbow(NPT 1/2)
 USA: 1/14 NPT 2 -Canada: 1/2"-14 NPT Europe: G1/2"

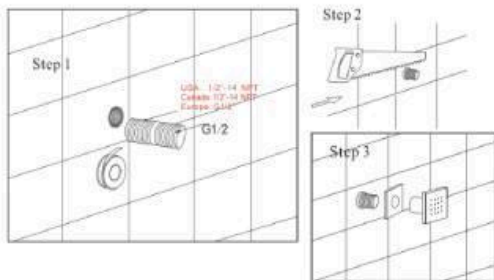
◆ **MAIN BODY CONNECTING PIPE SCHEMATIC DIAGRAM**

⚠ Warning: must install hot water and cold water inlet strictly as instructions.

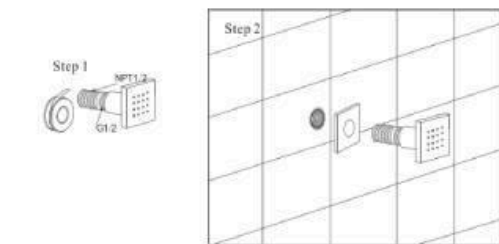


Use ⑰ Valve gasket spare parts and to fixed ⑧ Main body on the wall and then install ⑨ Panel ⑫ Hand ⑱ Hand cup and Hand screw ⑪ Water diverter ⑩ Water diverter rod in the correct order.

◆ INSTALLATION OF MASSAGE SHOWER



- Step 1. Wrap the threaded pipe of NPT1/2 with Teflon tape and screw it into the wall.
 Step 2. Cut off excess part with a saw.
 Step 3. Put on the decoration cap, then screw the massage shower in.

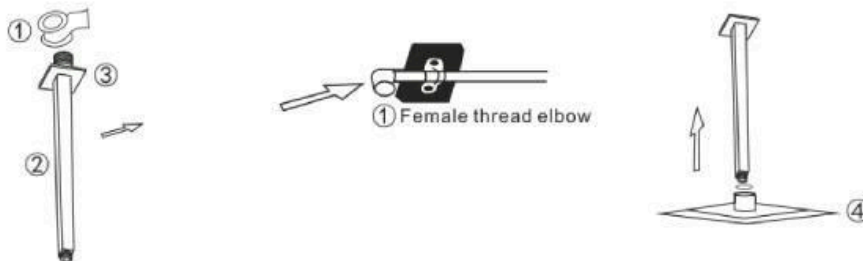


◆ SHOWER HOLDER INSTALLATION INSTALL THE HAND SHOWER HOLDER

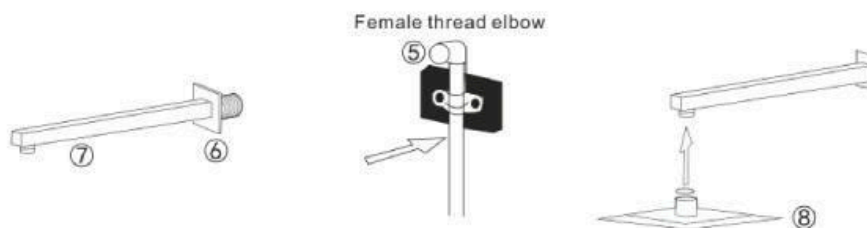


1. The connector to be wrapped with teflon tape. Screw the thread into the water pipe inside the wall.
2. Install the rubber pad on the shower hose and connect it with the connector.
3. Using anchors to screw the copper fittings to the wall firstly
4. Remove two screws on the shower seat
5. Insert the shower seat into the copper fittings that have been installed on the wall and then fix the shower seat with 2 screws

◆ INSTALLATION OF RAIN SHOWER HEAD& SHOWER ARM

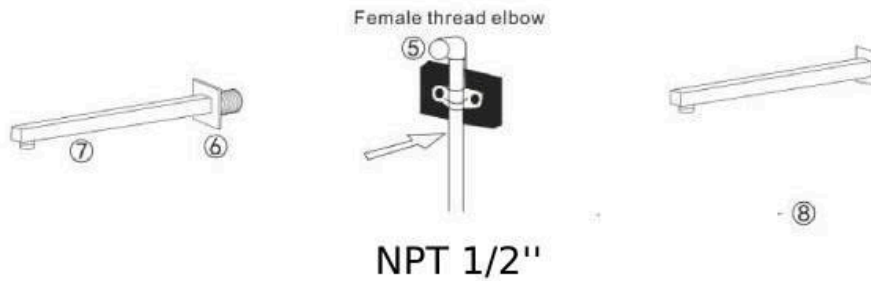


Connect top outlet ① to shower arm ② with proper fittings. To prevent damage, to finish on shower arm, insert wall end of shower arm into shower flange ③ before screwing arm into riser connection. Thread showerhead ④ onto shower arm. Apply tape to pipe threads on both ends. Do not overtighten showerhead. The showerhead is 360° swivel connection.



Connect top outlet ⑤ to shower arm ⑦ with proper fittings. To prevent damage, to finish on shower arm, insert wall end of shower arm into shower flange ⑥ before screwing arm into riser connection. Thread showerhead ⑧ onto shower arm. Apply tape to pipe threads on both ends. Do not overtighten showerhead. The showerhead is 360° swivel connection.

Tub Spout Installation:



◆ IF A LARGE-SCALE CLEAN-UP IS NECESSARY, FOLLOW THESE PROCEDURES

- 1: Use clean water and soft cloth to remove dirt on the surface as much as possible.
- 2: Use one of the following cleaners to remove dirt on the surface
 - Mild liquid cleaner.
 - Colorless glass cleaner, powder cleaner which does not have abrasive function and can be dissolved completely.
 - Polish liquid which does not have abrasive function.
- 3: After cleaning, remove the cleansing agent with clean water completely and wipe with soft cotton cloth.