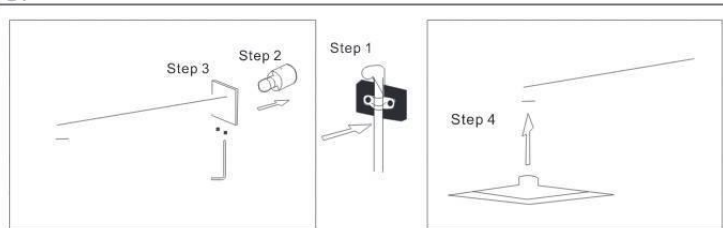


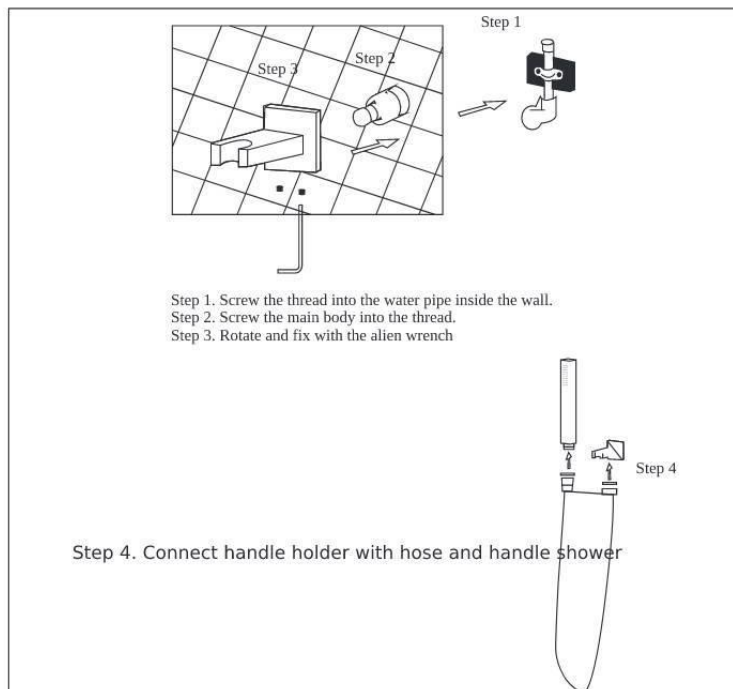
Or



Step 1. Screw the thread into the water pipe inside the wall.  
Step 2. Screw the main body into the thread.  
Step 3. Rotate and fix with the alien wrench

Step 4. The rain shower head connects to the arm.

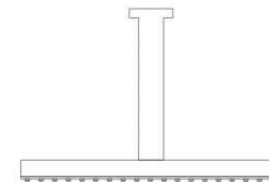
#### ◆ Install the handheld shower head



Step 1. Screw the thread into the water pipe inside the wall.  
Step 2. Screw the main body into the thread.  
Step 3. Rotate and fix with the alien wrench

Step 4. Connect handle holder with hose and handle shower

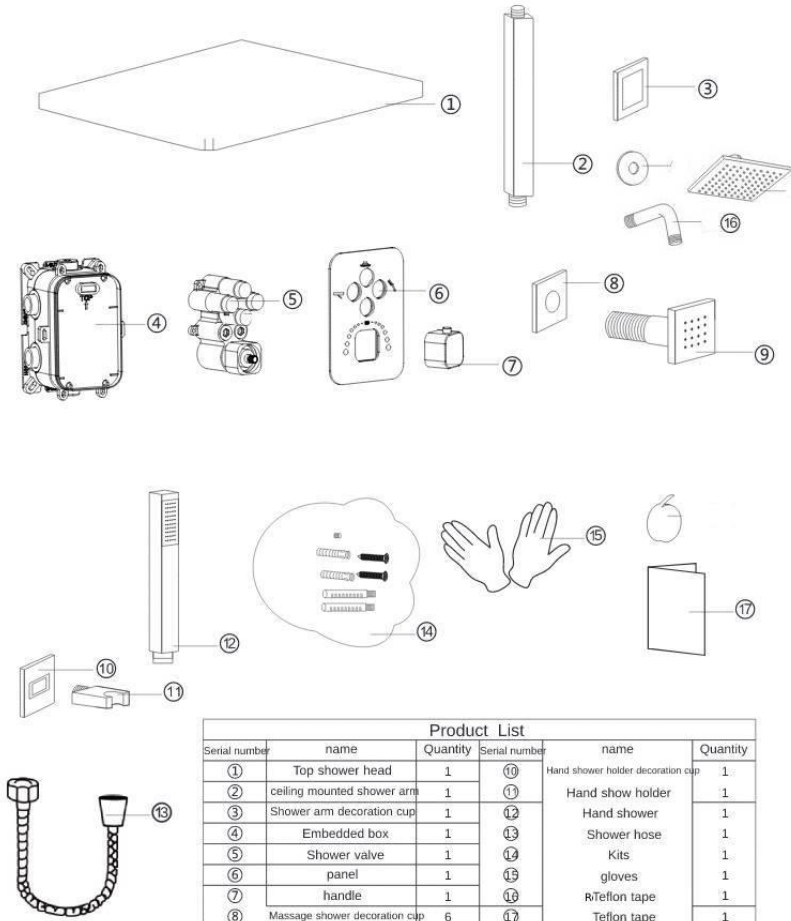
# THERMOSTATIC SHOWER MANUAL



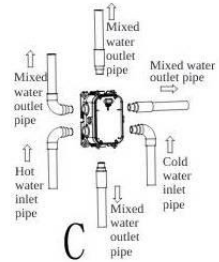
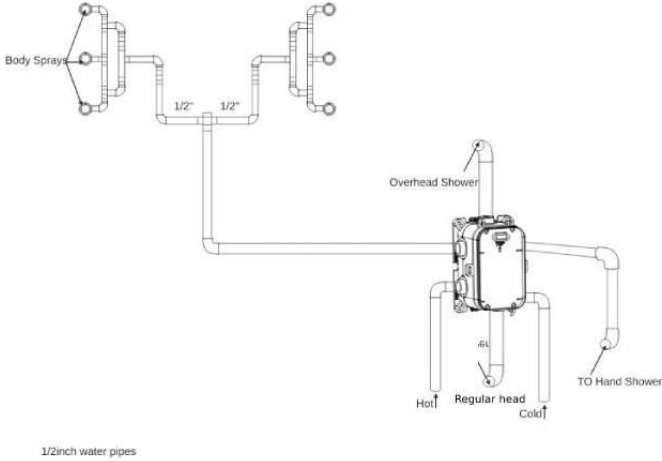
## Product List

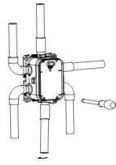
Please check the accessories with following table, if there is anything missing please contact customer service immediately.

### Ceiling mounted shower items



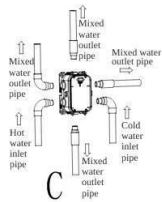
Product List					
Serial number	name	Quantity	Serial number	name	Quantity
①	Top shower head	1	⑩	Hand shower holder decoration cap	1
②	ceiling mounted shower arm	1	⑪	Hand show holder	1
③	Shower arm decoration cap	1	⑫	Hand shower	1
④	Embedded box	1	⑬	Shower hose	1
⑤	Shower valve	1	⑭	Kits	1
⑥	panel	1	⑮	gloves	1
⑦	handle	1	⑯	Rteflon tape	1
⑧	Massage shower decoration cap	6	⑰	Teflon tape	1
⑨	Massage shower	6		Instruction manual	





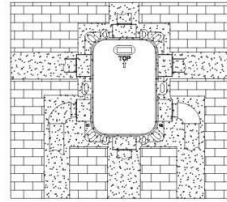
Open the water source to test whether the left and right inlet pipes are connected tightly and without leakage. After the inlet pipe is tested, adjust the flow switch to be on to test whether the mixed water outlet pipes are tightly connected without leakage.

④



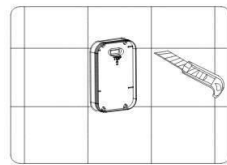
It is best to move the mercury to the center of the spirit level. If it is not installed properly, it will affect the panel installation effect.

⑤



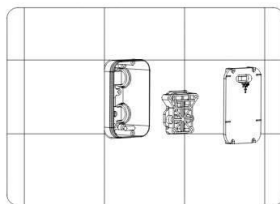
After the installation of the other embedded components of the shower is completed, the embedded box and the pipeline are sealed and fixed with filler.

⑥



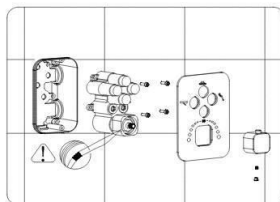
The external leakage embedded box is cut off.

⑦



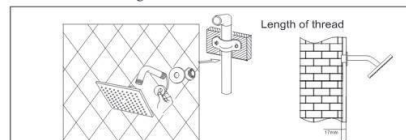
Take out the spirit level installation cover box and test water cover as shown in the figure.

⑧



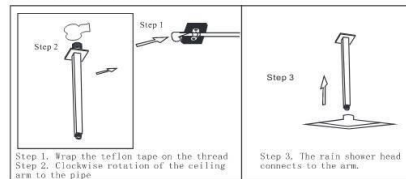
As shown in the figure, install the control valve, and then install the switch handle. Pay attention to the red pen mark. Use the small hexagon wrench included in the package to fix the switch handle clockwise on the valve body of the control valve. The direction of the handle stem is 38° - position.

#### ◆ Install the massage shower



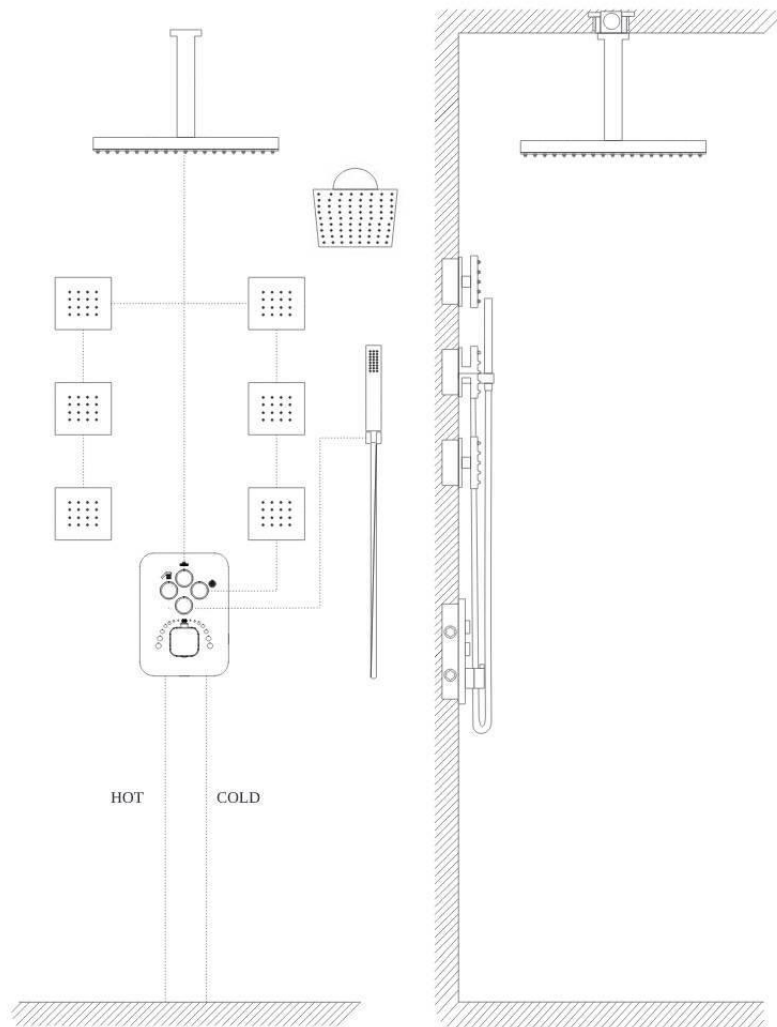
Step 1, Wrap the tooth tube  $\Phi 11/2$  with teflon tape and screw into the wall.  
Step 2, Cut off excess part with a saw.  
Step 3, Cover the decoration cup, then screw the massage shower in.

#### ◆ Install the rain shower head

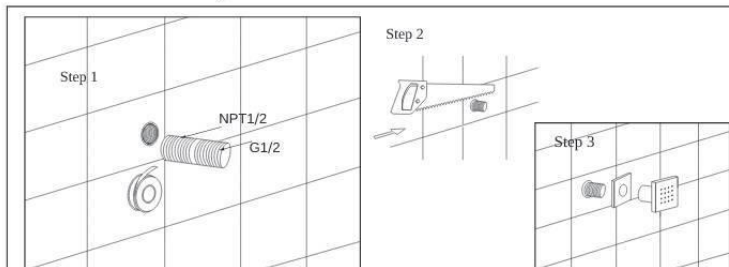


Step 1, Wrap the teflon tape on the thread.  
Step 2, Clockwise rotation of the ceiling arm to the pipe.

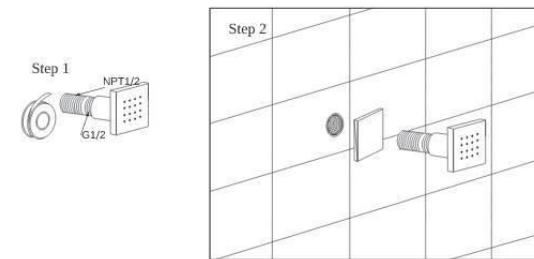
Step 3, The rain shower head connects to the arm.



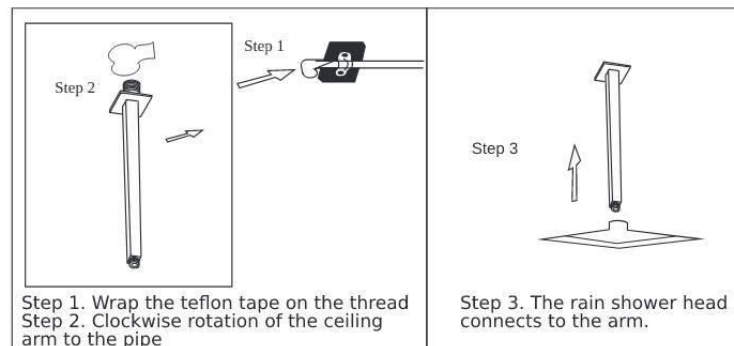
◆ Install the massage shower



Step 1, Wrap the tooth tube NPT1/2 with teflon tape and screw into the wall  
 Step 2, Cut off excess part with a saw  
 Step 3, Cover the decoration cup, then screw the massage shower in



◆ Install the rain shower head



Step 1. Wrap the teflon tape on the thread  
 Step 2. Clockwise rotation of the ceiling arm to the pipe

Step 3. The rain shower head connects to the arm.