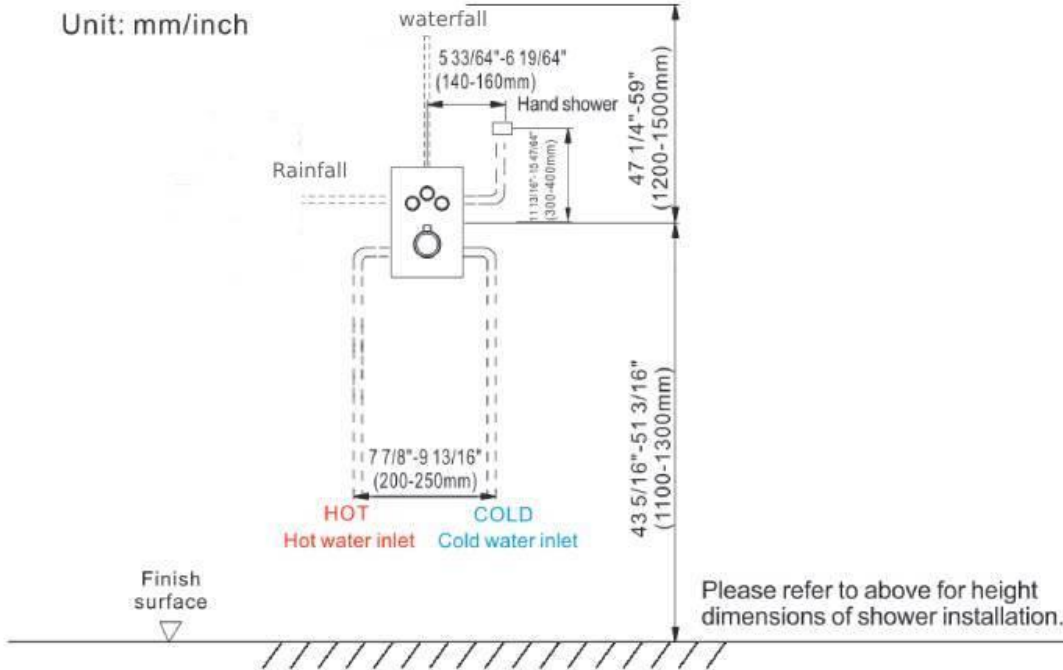


◆ **Essential Dimensions**

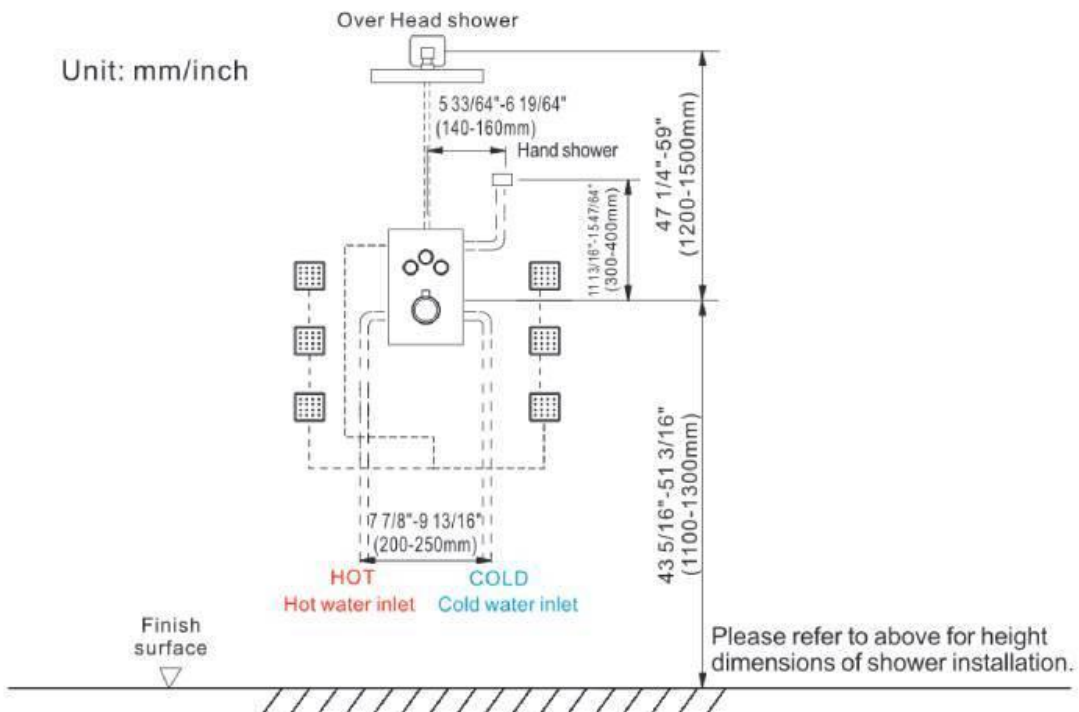
A9028F3C20WR/A9003F3C20WR/A9017F3C20WR

Unit: mm/inch



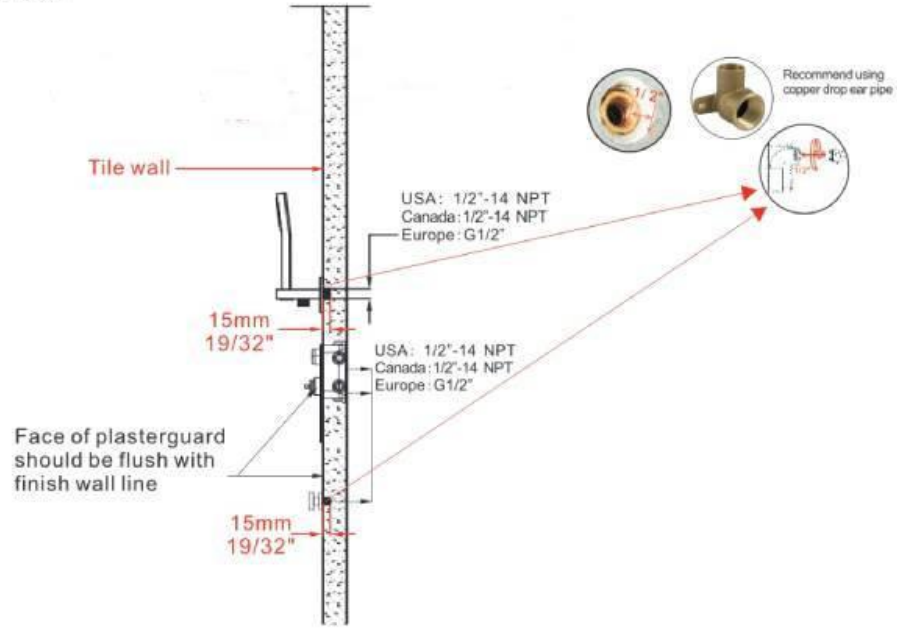
A9109F3W12B6Z2/A9102F3W12B6Z2/A9101F3W12B6Z2

Unit: mm/inch



◆ Installation Depth Of Shower Arm & shower holder & body Jet

Unit:mm/inch



The installation depth of shower arm & shower holder & body jet can't over 19/32"(15mm)so the thickness of tile must be calculated before installation.

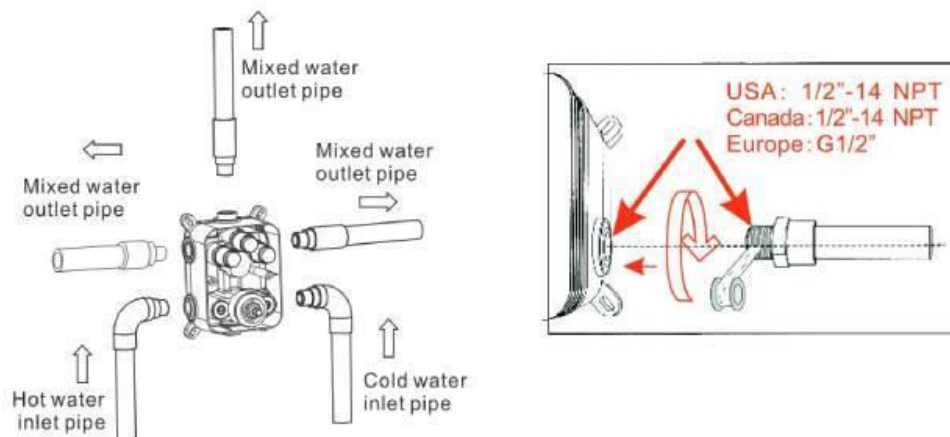
◆ Installation Depth of Main Body



**Notice:** 1.The installation depth of main body should be no less than 2 3/4"(70mm) and no more than 3 1/4"(82mm), including the thickness of tile. Other wise,the panel cannot be installed.

2.The opening size of ceramic tile shall be smaller than the panel size

◆ Main Body Connecting Pipe Schematic Diagram

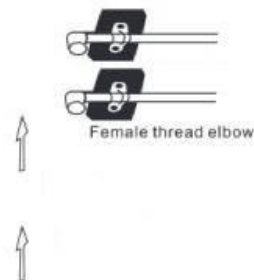


1. Connect the water pipes as illustrations. Please make sure the mark ↑ is facing upward.
2. Before tiling, turn on the water and pull the shower handle to check for leakages.

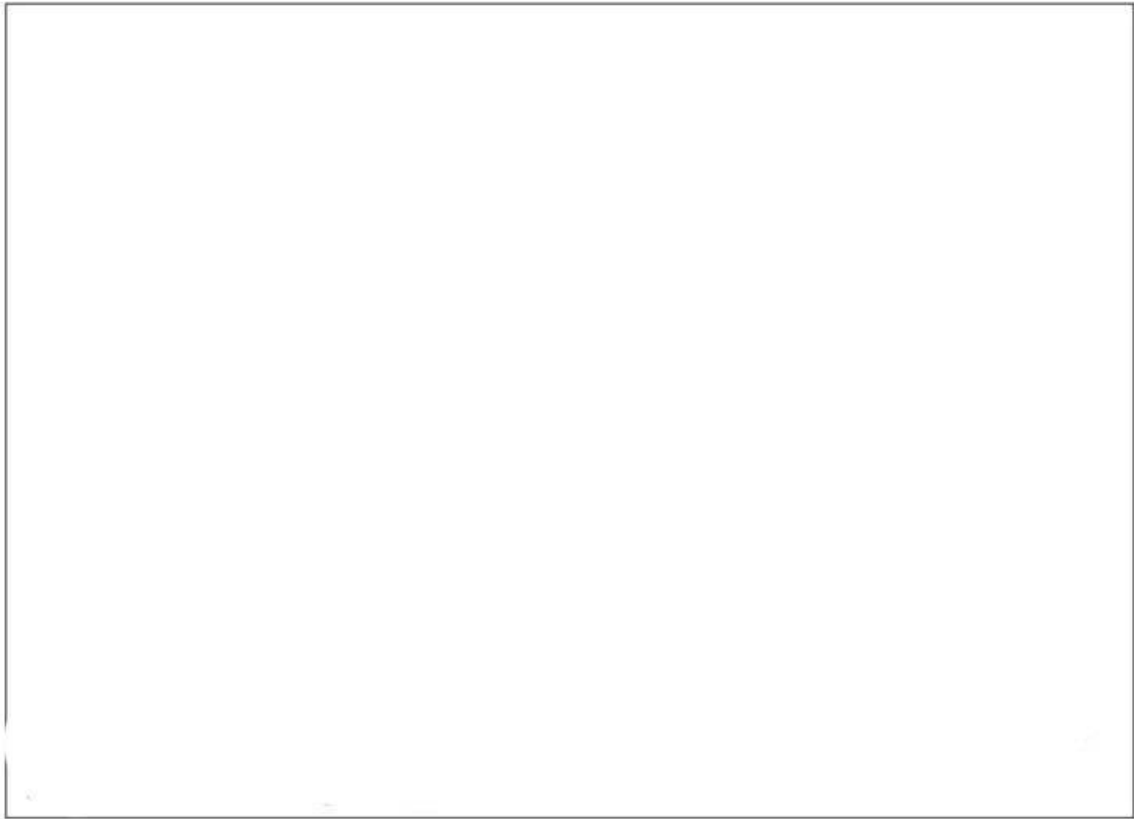


Warning: must install hot water and cold water inlet strictly as instructions.

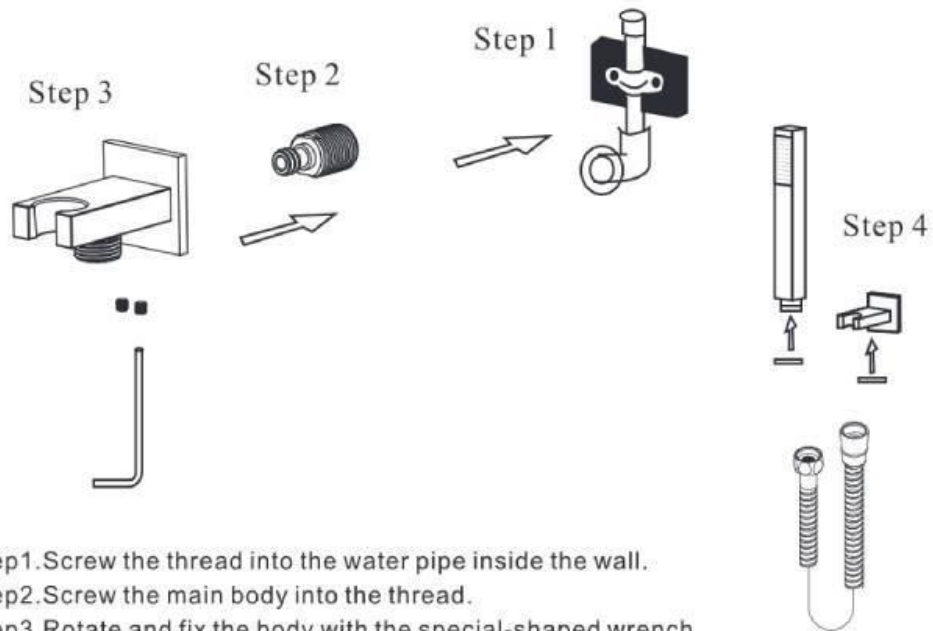
◆ Installation



1. Connect shower arm with the cover before screwing arm into riser connection to prevent damage.
2. Fix shower head onto shower arm and apply tape to pipe threads on both ends.
3. Do not overtighten shower head. It is 360° swivel connection.

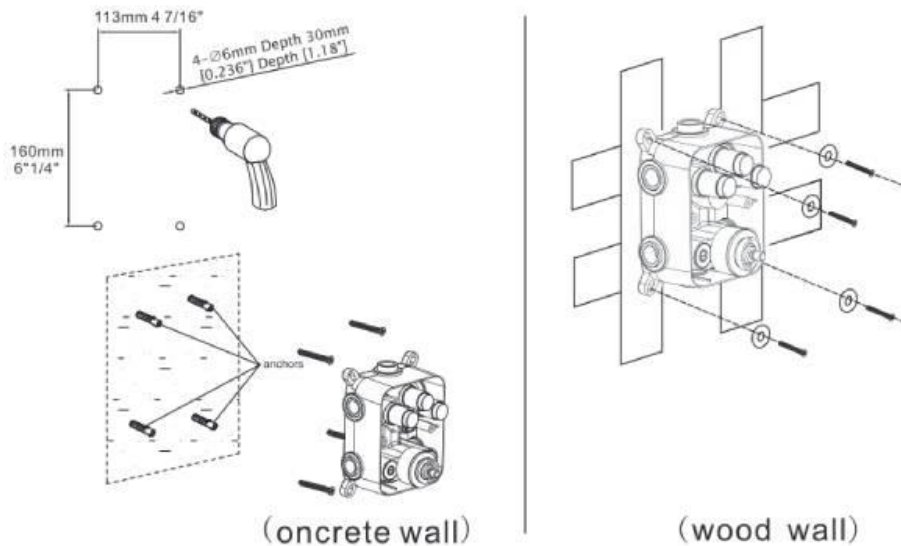


◆ Hand Shower Holder Installation



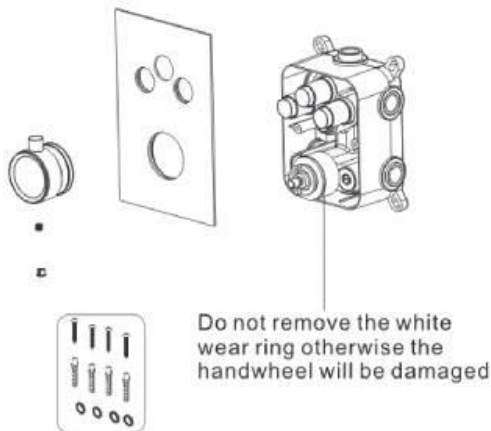
Step1. Screw the thread into the water pipe inside the wall.  
Step2. Screw the main body into the thread.  
Step3. Rotate and fix the body with the special-shaped wrench.  
Step4. Connect hand shower and the hose.

## ◆ Main Body valve installation



1. Make marks according to the size of the main body valve and then drill anchors into the wall (concrete wall)
  2. Lock main body to wood directly with screws (wood wall)
- ▲ Please note that the level meter should be parallel with the wall, otherwise the panel cannot be installed.

## ◆ Main Body valve installation

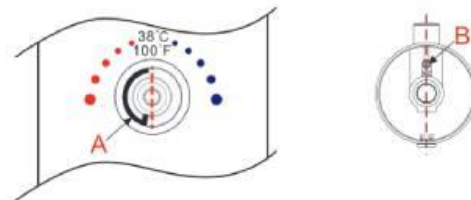


### Precautions for handwheel installation

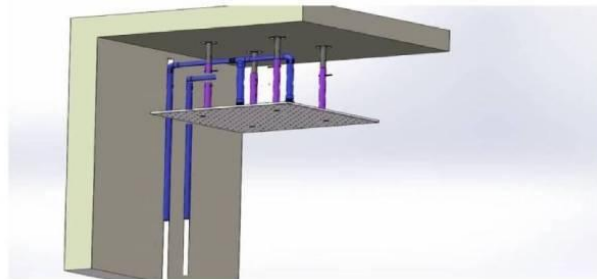
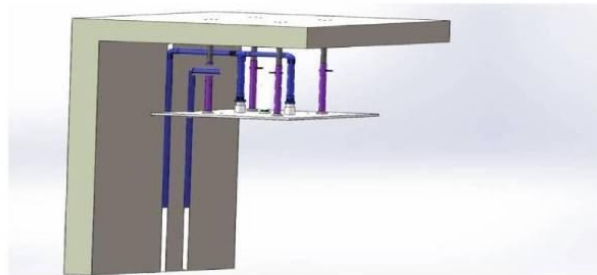
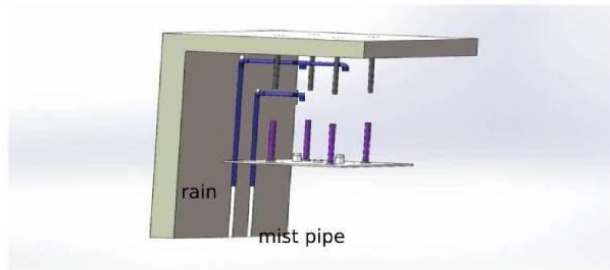
※1: The line can't misplace, it should be kept in a line, otherwise the water temperature of 100°F or 38°C will not be correct.



※2: Please ensure that A Plastic locating ring and B handwheel locating pin kept in the same line with 100°F or 38°C. Otherwise, the water temperature will be wrong.

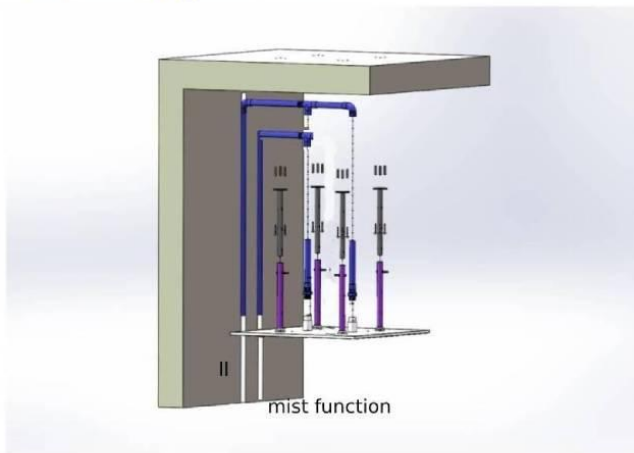
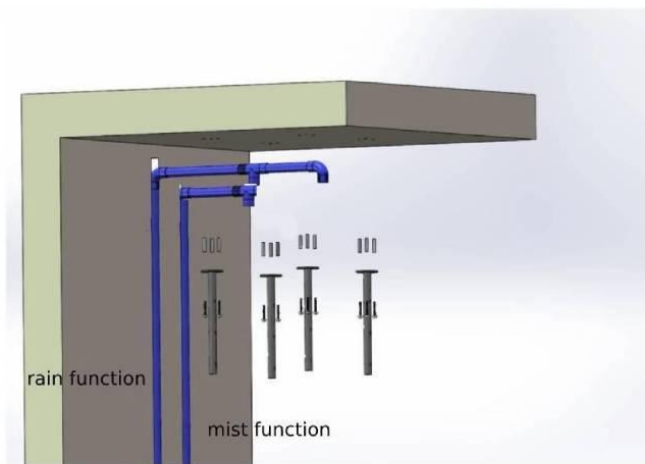


1. Use Valve gasket spare parts and to fixed Main body on the wall and then install Panel.
2. Please fix the main body to the wall remove the plastic protective cover and install panel water diverter screw and water diverter cap step by step.
3. Install the handle with the screw and handle cap.

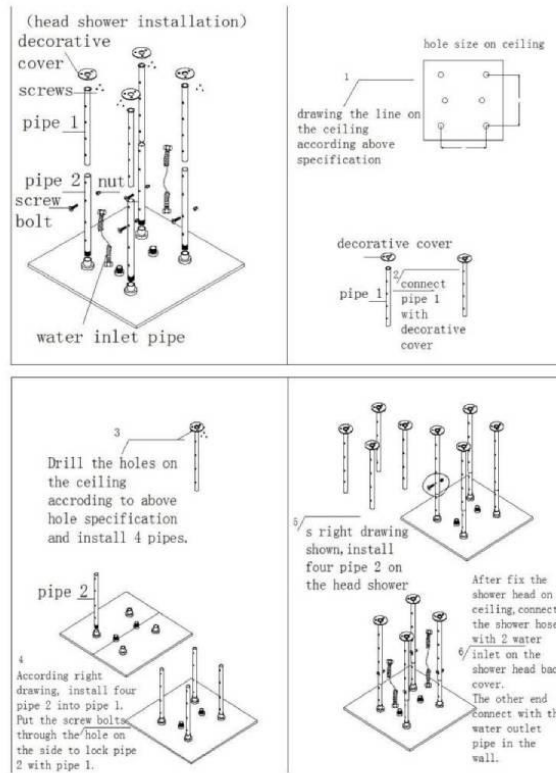


the right side pipeline is for rainfall function

the left side pipeline is for mist function



This is first installation style :non- flushed mounted on ceiling



This is first installation style :non- flushed mounted on ceiling



## Showerhead Installation

### INSTALLATION MANUAL Tools You Will Need:



Adjustable Wrench



Hexagon wrench



Philips Screwdriver

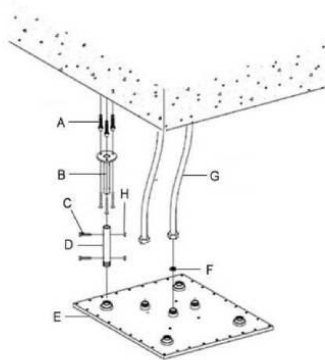
### Before the Installation

1. Check the package and confirm all parts are included. If any part is missing or damaged, please contact us.
2. Do not disassemble the main body, as it has been installed & commissioned correctly & precisely before leaving the factory.
3. Shut off the main water supply prior to beginning installation.
4. Do flush the water supply lines to remove any dirt and debris before installation **(IMPORTANT)**.
5. Make sure to connect the hot/cold inlet pipe correctly. If standing in front, connect hot water pipe to the left and cold water pipe to the right.
6. After the installation, check for leaks and make sure every joint is safely sealed.

### Cleaning and Maintenance

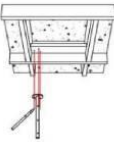
1. Rinse with clean water and dry with a soft cloth.
2. Do not use any detergent, acid, polisher, abrasives, or harsh cleaners.
3. Do not use cloth with a coarse surface.

### Parts List

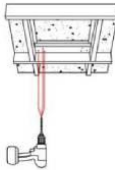


Part	Name	Quantity
A	anchors	16
B	mounting bar	4
C	screws	24
D	shower bar	4
E	shower head	1
F	screen washer	1
G	shower hose	1
H	nut	8

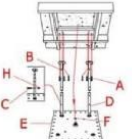
**Installation Guide**



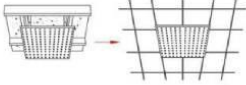
1. Make the fixing positions to ceiling.



2. Drill holes to suit the anchors.



3. Add the screen washer (F). Screw shower hose (G) (not included) to the water inlet on the shower head (E) and then to the water outlet in the ceiling. Install the anchors (A) and fix the mounting bar (B) to ceiling with screws (C). Screw shower bars (D) into the shower head (E) tightly. Attach the shower bar (D) to the mounting bar (B) and fix screws (C) and nut (H) to lock shower bars (D) with mounting bar (B) at the desired height.



4. Finish the ceiling as shown.

**Troubleshooting**

Problem	Possible Cause	Corrective Action
Water does not shut off completely.	1. O-ring is not seated correctly or worn. 2. Cartridge may be defective.	1. Reseat or replace O-ring. 2. Replace cartridge.
Leaks at waterline connection.	1. Worn or broken washer. 2. Faucet body may be defective.	1. Replace washer. 2. Replace faucet (contact us for the replacement).
Leaks from handle.	1. Cartridge may come loose. 2. Cartridge may be defective.	1. Reseat cartridge tight. 2. Replace cartridge.
Leaks at hose connection.	1. Hose connection is loose.	1. Tighten hose. 2. Replace hose.
Leaks at shower valve connection.	1. Connection may come loose or not sealed completely. 2. Defective shower valve inlet or outlet connector.	1. Check connections. 2. Replace valve body.
Diverter knob does not work.	1. Diverter cartridge may be defective.	1. Replace cartridge.
LED light does not Light or noisy LED showerhead.	1. Defective LED generator.	1. Replace LED spray head (for kitchen faucet). 2. Replace LED threaded pipe (for separate faucet spout). 3. Replace LED generator (for others).
Low flow.	1. Check for water pressure problems. 2. Aerator may be dirty or clogged.	1. Clean or replace the aerator. 2. Remove waterflow restrictor if available. 3. Install booster or pump (if applicable).

This is second installation style : flushed mounted on ceiling