

DOWNLIGHTS

NEW ZEALAND

Mini Candles for Mothers' Day

Downlights launches 3 Mothers' Day Luxe Mini candles

Also introducing a NEW fragrance 'Persian Rose'

Buy the one candle in the fragrance that best suits her personality or buy all three to tell mum how much you appreciate her many dimensions and all the big and little things she does for you. Whichever way you choose to do it, this gift is a small gesture that is big in heart.

This Mothers' Day, there are three fabulous candle fragrances to choose from, all in Downlights bestselling and popular mini candle size, each attractively priced at only \$19.95 featuring three distinct fragrance offers from Purple Orchid, Bamboo & White Lily and a NEW Persian Rose fragrance.



Jennifer Del Bel, Downlights Managing Director shares, "our mini candles were a Christmas best seller. These minis are highly giftable because they are small and

perfect for travel, a lovely addition to her night-stand or simply to enjoy when having a luxurious bath. They are elegantly presented in crystal cut glass jars which can be re-used, refilled or recycled, each housed in a stylish white box. Small in size but big in quality and performance, each mini candle delivers a clean 20-hour burn, attractively priced at only \$19.95 each. We worked closely with our French Perfumer, Francois Merle-Baudoin, a fifth-generation award-winning French perfumer from the internationally famous Grasse parfumeries in the French Cote D' Azure, to curate a **new** fragrance, Persian Rose. This fragrance is feminine, exotic and alluring and associated with feelings of intimacy, deep love and dedication, perfect for Mothers' Day."

Three fragrances each with a different appeal.



NEW! Making its debut this Mothers' Day, **Persian Rose** is feminine, exotic and alluring with floral accords mixed in with the scent of rose, jasmine and raspberry and hints of vanilla, sandalwood, sweet musk and amber.



Last year's favourite and best-selling scent for Mothers' Day is now available as a mini! **Purple Orchid** is voluptuous, opulent and mysterious, whilst alluring and sensual with the lure of an exotic purple orchid mixed with spicy notes. This lingering scent also has hints of white gardenia and warm amber.



Bamboo and White Lily is another classic and elegant choice with a scent that offers up oriental notes of fresh cut bamboo and lily of the valley with subtle hints of sandalwood and woody musk, creating an enticing environment when burnt.

Shop our complete range

Alongside the three Mothers' Day special mini candle collection, we also offer a range of classic soy candles, preserving jar candles, soy melts, mini and luxe candles in crystal cut jars, room diffusers and candle accessories. Prices start at NZ\$19.95.

We are [fwd certified](#) as a New Zealand social enterprise and NZ\$1 from every candle sold goes to Downlights Charitable Trust in support of the New Zealand Down Syndrome Association and Recreate NZ.

All available at: <https://www.downlightsnz.com>

Website promotion:

Buy 3 candles and get a pack of our latest new release soy melts, with our compliments. Each pack of soy melts has a 60 hour burn time and contains 6 individual, 10-hour slow burn cubes with an incredible scent throw. Spend NZ\$100 for free shipping within NZ and Australia.

About Downlights NZ, 2020

Downlights NZ is a New Zealand owned and operated fragranced soy candle company that manufactures luxury candles using artisanal techniques. Our candles are lovingly hand poured and the entire manufacturing process supports the development of a variety of workplace skills for young adults with Down syndrome amongst other disabilities.

Downlights found its beginnings with Illumina, born in 2013 from Managing Director, Jennifer Del Bel's passion and desire to create a luxe candle company that manufactured the longest clean burning fragrant luxe soy candles housed in distinctly

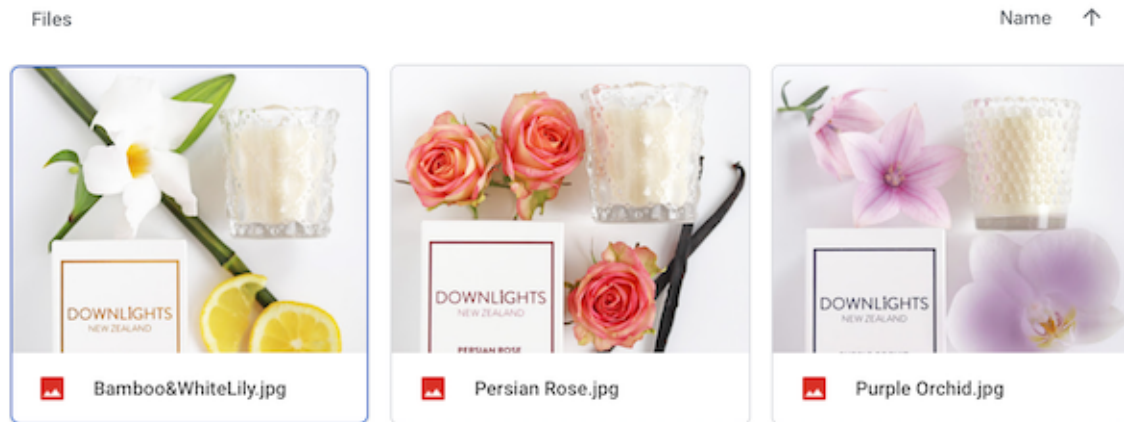
unique vessels with exquisite packaging. Working with Francois Merle-Baudoin, a fifth-generation award-winning French perfumer from the internationally famous Grasse parfumeries in the French Cote D' Azure, she curated a full fragrance range for Illumina, manufacturing soy candles that are 100% biodegradable, non-toxic, with no GMO's, using wicks that had no lead or zinc in them. The highest level of quality control has been maintained over the years and the range is stocked at various premium stockists all over New Zealand. Illumina additionally manufactures and designs bespoke orders for prominent five- star hotels and deluxe Home stores in New Zealand.

This base of expertise coupled with a desire to make positive social change led to the unification of the two brands in March 2020 as Downlights Ltd. Proudly, we are [FWD certified](#) as a Social Enterprise providing buyers with confidence that our products deliver positive social impact. Our social impact moves beyond the realms of daily milestones achieved in our factory by our growing team of people with and without disabilities, into the greater community, through an exclusive range we offer to schools, clubs and community groups to support their fundraising efforts

The company's tagline '**illuminate-care-change**' personifies their dream to set an example for other employers in New Zealand by looking to '**illuminate**' and light the way by providing true equal opportunity and showing '**care**' by working with schools and various community bodies to help raise funds for their projects. Through the recent incorporation of our charitable trust, Downlights will also be donating NZ\$1 from every product sold to Downlights Charitable Trust recipients, The New Zealand Down Syndrome Association and Recreate. We hope that one day, this will pave the way for '**change**' that leads to inclusivity not only in today's growing workforce, but society as a whole.

NOTE TO EDITORS

High Resolution Photos: Click [HERE](#)



For more product information, please contact Downlights NZ:

Managing Director:

Jennifer Del Bel (Tel: 021-763-471) Email: jennifer@downlightsnz.com