



Straps
Do not
wash



Orthosis
Handwash
Max. 30°

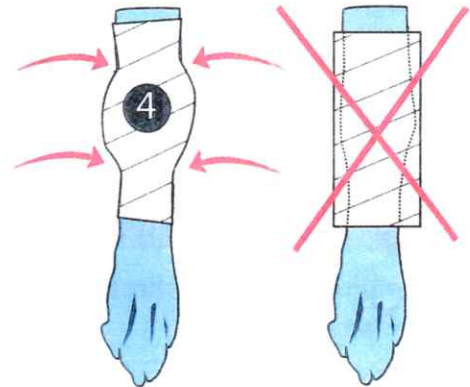
Fitting Template Orthosis Tarsal Grade 2

1. The orthosis is easiest to apply while the animal lies down and the tarsal joint is in a natural / stretched position.

2. Place the limb on the orthosis*.

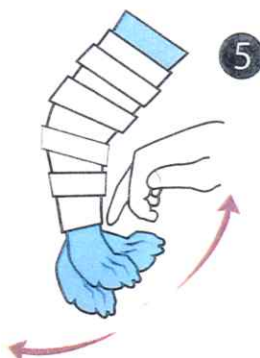
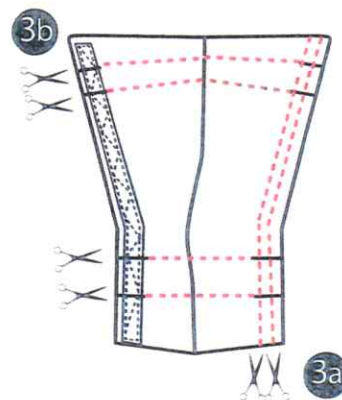


4. Tighten so that the orthosis is shaped around the leg. Cut nylon straps to fit and cinch around outside of the wrap. Use the wider strap in the top, and the narrower strap below. Fasten the orthosis with the straps. Important to not attach the straps too close to the tarsal joint.



3. If the overlap is too wide (3a) or the wrap is too long (3b), cut them with scissors.

If you are planning to use only the orthosis without the stabilizing nylon straps* (*see next page), attach the straps tightly over the outside of the wrap.



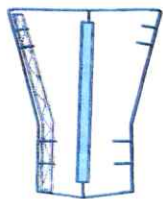
5. Apply the orthosis. Note! The Paw must have free movement and the orthosis must not cause pressure or chafing on top of the paw.

For additional stability and support Use the included stabilizing nylon straps.

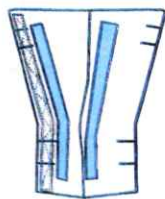
- Apply the stabilizing straps after applying the orthosis and before the animal is putting weight on the leg.
- Set the desired joint angle / load position before applying the stabilization straps.
- The stabilizing straps are to be applied to the outside of the orthosis where the animal needs additional stability (eg tarsal hyperflexion).
- Cut the stabilizing straps to the desired length.
- Tighten the outer straps over both the orthosis and the stabilizing straps.

Examples of stabilization with nylon straps.

NOTE! Fasten nylon straps when the orthosis is already applied on the animal!



Caudal application
(eg mild to moderate hyperflexion).



Medial and/or lateral applications
(eg, for valgus deformity).

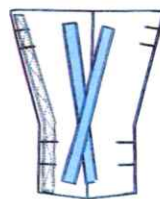


Figure "X" application caudal over tarsal joint to provide increased support.

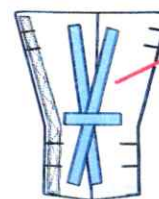


Figure "X" with an additional horizontal component provides the greatest stability.

Stabilizing nylon straps

Important information

- Examine the leg 2-4 times / day for swelling of the toes, as well as heat gain and chafing.
- Contact your vet if exuding wounds, odours or other problems occur. It is always easier to treat complications that are noticed early, so let them know if there are skin irritations, preferably before it has become a wound or drainage of fluid.
- The orthosis always affects the gait. Does it seem uncomfortable for the patient? If the animal licks, bites or is not using the leg, please contact your vet. Be aware of changing behavior, for example, if the mood is not as it used to, or if the animal does not want to eat. Contact your veterinary clinic if you have questions!

Care instructions

- Remove fur and debris from the Velcro for best adhesion.
- Do not wash the straps.
- Clean the orthosis with mild detergent by hand, maximum 30 °C.

Contact us for questions regarding the orthosis and for any problems that may occur.

Tel. +46 (0)31-21 41 28 Email: info@scandiop.se

