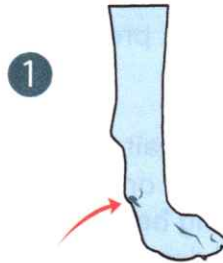


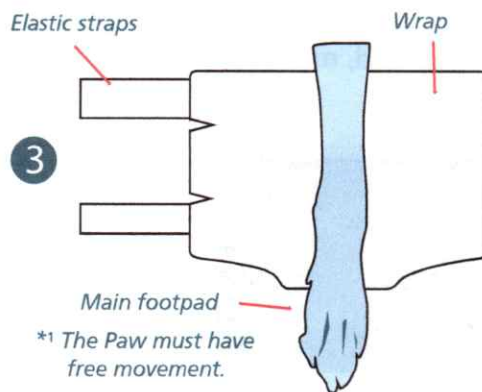
Fitting Template Orthosis Carpal Grade 1

1. Before using the orthosis, clip or file the claw of the spur, so that it does not irritate the leg. If necessary, a hole can be made in the orthosis to relieve the spur.

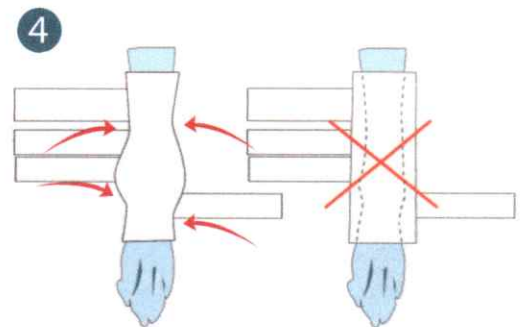


2. The orthosis is easiest to apply while the animal lies down and the carpal joint is in a natural / stretched position.

3. Place the limb on the open orthosis with the wrap just above the back of the main footpad*1.

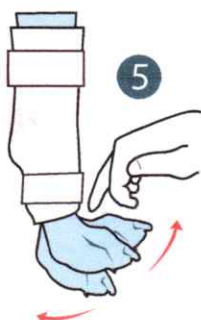
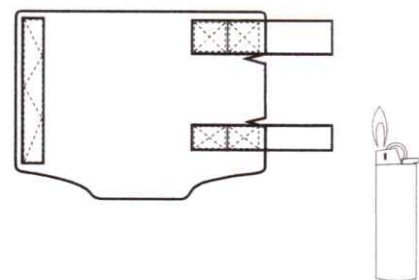
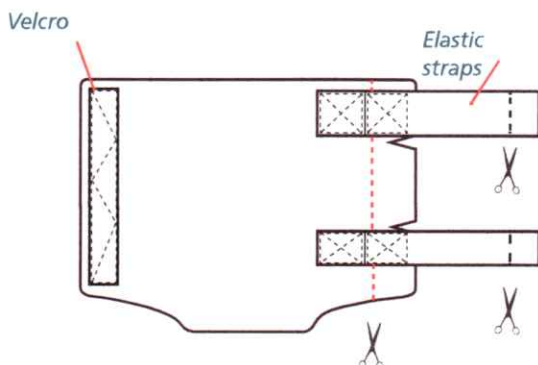


4. Tighten so that the orthosis is shaped around the leg. Fasten the orthosis with the elastic straps*2,3.



- *2 If the elastic straps are too long, cut them with scissors.

- *3 If you have cut the ends, burn them gently with a lighter to prevent fraying.



4. Apply the orthosis. Note! The Paw must have free movement and the orthosis must not cause pressure or chafing on top of the paw.