

SOLUTION Z-FIX

Owner's Manual
<Insert 2nd language>

⚠ READ this Owner's Manual carefully before first use, and keep it for future reference.

⚠ <Insert 2nd Language>

WELCOME TO THE CYBEX FAMILY,

Thank you for purchasing the CYBEX Solution Z-fix High Back Booster Seat. We are proud to bring this German engineered seat to North America. We hope the Solution Z-fix will make your child's travel both safer and more pleasant, as well as making installation and use for you as simple and easy as possible.

The Solution Z-fix is the next generation of the award winning CYBEX booster seats. With greatly improved protection in side impact and forward facing crashes, the Solution Z-fix takes booster safety to a new level.

Statistics show that over 75% of car seats are installed incorrectly!

Please read and follow these instructions to install this booster seat correctly, even if the installation and use of this booster seat might seem simple and intuitive. The safety of your child depends on it! Although many booster seats may be used without the backrest attached, the Solution Z-fix should **NEVER BE USED WITHOUT THE BACKREST ATTACHED as it dramatically reduces the protection in a crash.**

We recommend keeping your young child in a properly sized and installed car seat as long as possible before making the switch to the Solution Z-fix High Back Booster Seat.

No car seat can guarantee protection from injury in every situation, but proper use helps reduce the risk of death or serious injury. If you have any questions or need assistance, please contact Cybex at 1-877-242-5676

Also, please remember to register your booster seat so we can contact you in the unlikely event of a recall. Register online:

- In the United States, at <http://register.cybex-online.com/us/carseats>
- In Canada, at <http://register.cybex-online.com/ca/carseats>

Keep this Owner's Manual for future reference by storing it in the pocket behind the Backrest pad. We appreciate your purchase and invite you to visit our web site www.cybex-online.com to see other great CYBEX products.

Before the first use of this booster seat, please make sure you have followed all the steps in the Safety Checklist found on page 31.

| | |
|---|-----------|
| INDEX | |
| SOLUTION Z-FIX FEATURES | 2 |
| REGISTRATION AND RECALL INFORMATION | 3 |
| BOOSTER SEAT OVERVIEW..... | 4 |
| WHEN TO PLACE YOUR CHILD IN A BOOSTER SEAT..... | 6 |
| CHILD SIZE: HEIGHT, WEIGHT, AND AGE RANGES | 7 |
| WARNINGS AND IMPORTANT SAFETY INFORMATION | 8 |
| ASSEMBLY | 12 |
| VEHICLE SEAT LOCATION REQUIREMENTS | 13 |
| VEHICLE SEAT BELT REQUIREMENTS | 15 |
| VEHICLE LATCH/UAS REQUIREMENTS | 16 |
| INSTALLING USING LATCH/UAS | 17 |
| INSTALLING WITH SEAT BELT ONLY..... | 19 |
| ADJUSTING THE SEAT FOR YOUR CHILD..... | 20 |
| SECURING YOUR CHILD IN THE BOOSTER SEAT | 22 |
| UNINSTALLING THE BOOSTER SEAT | 26 |
| FABRIC COVERS | 27 |
| CARE AND CLEANING..... | 30 |
| SAFETY CHECKLIST | 31 |
| RESOURCES..... | 32 |
| WARRANTY | 33 |

SOLUTION Z-FIX FEATURES

The Solution Z-fix brings all new technologies to the High Back Booster Seat category to enhance the safety of your child in the event of a side impact collision.

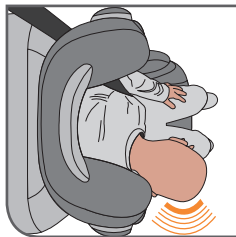
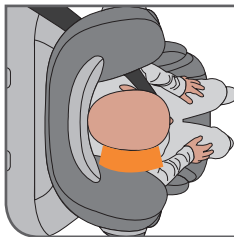
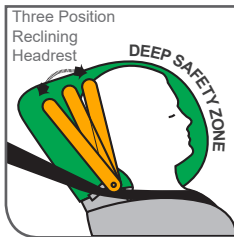
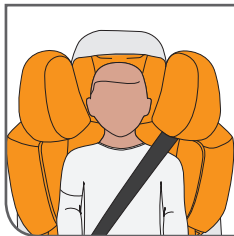
LINEAR SIDE-IMPACT PROTECTION™ (L.S.P.)

The L.S.P. system allows the forces from a side impact collision to be reduced gradually to help minimize injuries. The Head and Shoulder Protectors are made of extra deep and thick energy absorbing EPS foam to create a deep Safety Zone™ around your child.

THREE POSITION RECLINING HEADREST

When a child sleeps, their head can fall forward. The CYBEX Three Position Reclining Headrest helps avoid this by allowing your child's head to recline and remain protected in the Safety Zone of the Head Protectors. If your child slumps forward out of position when asleep, there is an increased risk that your child will not be well protected in the event of a collision.

Thanks to the Reclining Headrest of the Solution Z-fix, your child will be able to lean back and sleep comfortably with the head inside the Safety Zone.



REGISTRATION AND RECALL INFORMATION

Please complete the Registration Card that came with your Child Restraint and mail it immediately or register online.

Child restraints could be recalled for safety reasons. You must register this restraint to be reached in a recall. Send your name, address, e-mail address if available, and the restraint's model number and manufacturing date to:

Columbus Trading-Partners USA Inc.
Attn: ParentLink
1801 Commerce Drive
Piqua, Ohio 45356, USA

or call 1-877-242-5676 or register online at
<http://register.cybex-online.com/us/carseats>

For recall information, call the U.S. Government's Vehicle Safety Hotline at: 1-888-327-4236 (TTY: 1-800-424-9153), or go to www.NHTSA.gov.

PUBLIC NOTICE FOR CANADIAN CUSTOMERS

To register your booster, return the registration card, call 1-877-242-5676, or register online at <http://register.cybex-online.com/ca/carseats>

For recall information, call Transport Canada at 1-800-333-0510 (1-613-993-9851 in Ottawa region) or Goodbaby Canada Inc. at 1-877-242-5676.

CERTIFICATION

In the United States, this child restraint system conforms to all applicable Federal Motor Vehicle Safety Standards.

In Canada, this child restraint system meets all the applicable requirements of Canadian Motor Vehicle Safety Standard 213.2.

This restraint is certified for use only in passenger and multi-purpose passenger motor vehicles, buses, and trucks equipped with lap/shoulder belt systems.

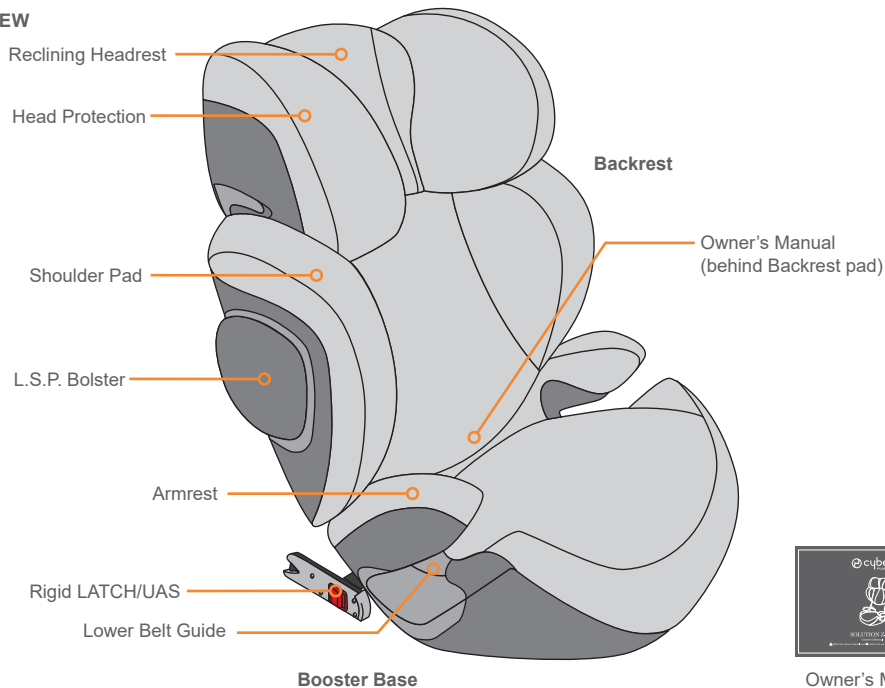
**THIS RESTRAINT IS NOT CERTIFIED
FOR AIRCRAFT USE** as shoulder belts
are not available for proper use.



Registration information may be found affixed to the underside of the Booster Base.

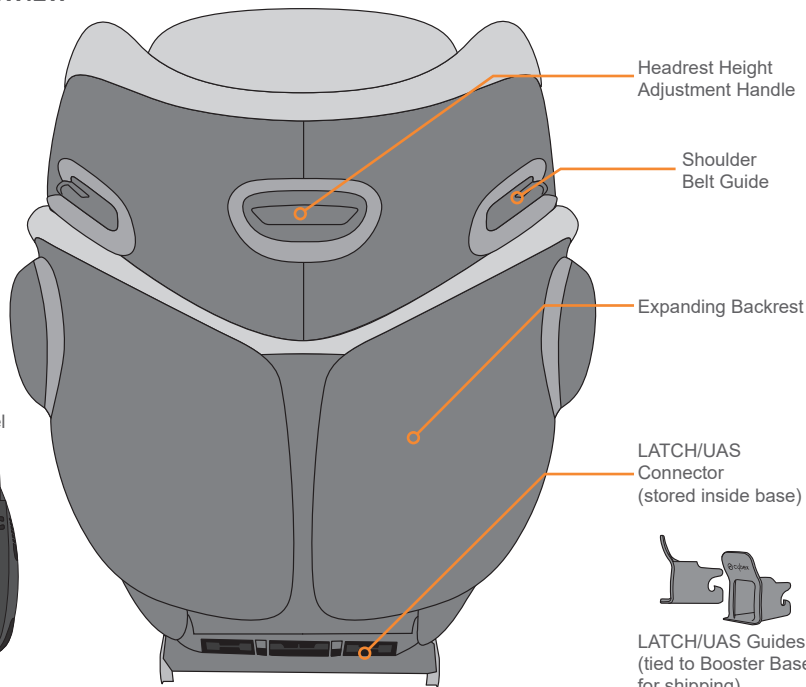
BOOSTER SEAT OVERVIEW

FRONT VIEW



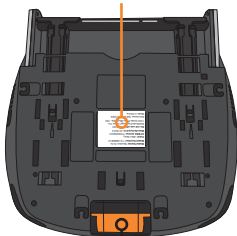
BOOSTER SEAT OVERVIEW

REAR VIEW

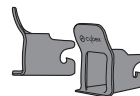


BOTTOM VIEW

Product Information Label



LATCH/UAS Adjustment Handle

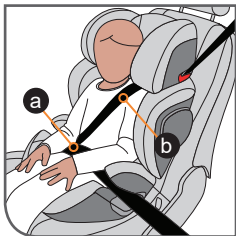


LATCH/UAS Guides
(tied to Booster Base
for shipping)

WHEN TO PLACE YOUR CHILD IN A BOOSTER SEAT

Booster seats raise the child up and help to position the vehicle lap and shoulder belt correctly. When the child is **properly restrained** in a booster seat, their risk of injury in all types of crashes is reduced.

It is important for the child to sit properly within the vehicle seat belts. When the vehicle seat belt is buckled, the lap belt must be positioned **low and snug at the child's hips**, just touching the thighs (a), and the shoulder belt **should lie across the middle of the shoulder** (b). If the child leans out or moves the belt behind the back or places it under the arm, **it will not provide the intended restraint.**



There are a number of things to consider when deciding whether the child is ready to sit in a booster seat, including: the weight and height rating on their current child seat, the child's own weight and height, their maturity, and the seating positions available in your vehicle.

How is a booster seat used?

Using a booster seat is very similar to buckling yourself into the vehicle:

- Read the instruction manuals for both the booster seat and the vehicle before you start.
- Put the booster in the back seat in a location with a lap and shoulder belt. **Never use a booster with only a lap belt**, as this could cause serious injuries.
- After the child is in the booster, pull the lap and shoulder belt across him/her and buckle it.
- Check that the shoulder belt lies across the middle of the shoulder and that the lap belt is low on the hips, just touching the thighs.

How can you tell if your child is ready to transition to a booster seat?

You should consider using a booster seat if the following conditions apply:

- The child is mature enough to sit in the booster seat and not put the belts under their arm or behind their back.
- The child is approaching the weight or height limit of the child restraint they are currently using.
- If you have a vehicle that does not have a tether anchorage but has lap/shoulder belts available in the back seat.

⚠ WARNING!

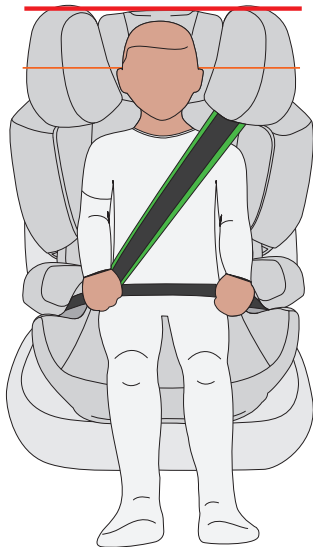
DEATH or SERIOUS INJURY can occur

- **USE ONLY** with children who are 3 years of age or older **AND** who weigh 18-50 kg (40-110 lb) **AND** whose height is 96-152 cm (38-60 inches). Using this booster seat with a child who does not meet **ALL** of these requirements may increase the risk of death or serious injury.
- Use this booster seat **FORWARD FACING ONLY**.

The tops of the child's ears (**Orange Line**) are below the top of the booster seat (**Red Line**).


When sitting in a booster seat, the shoulder belt **should lie across the middle of the shoulder (GREEN ZONE)** and snug across the midpoint of the child's chest.

The lap portion of the seat belt **MUST** be positioned **low and snug at the child's hips**.



18-50 kg (40-110 lb)
AND
96-152 cm (38-60 in)

⚠ WARNING! DEATH or SERIOUS INJURY can occur

- **YOUR CHILD'S SAFETY** depends on you correctly installing and using this booster seat.
- **READ** and **FOLLOW** all booster seat and vehicle instructions carefully. Failure to follow these instructions and the product labeling can result in **DEATH** or **SERIOUS INJURY** of your child in a sharp turn, sudden stop, or crash.
- **DO NOT** install or use this booster seat until you have read and understand the instructions in this manual and in your vehicle Owner's Manual . If there is a conflict between the two, the vehicle Owner's Manual must be followed.
- **NEVER USE** this booster seat with a lap belt only, or with any motorized, door mounted, or inflatable vehicle belts. Your child would not be properly restrained in the event of a crash.
- **DO NOT** let others install or use this booster seat unless they understand how to correctly install and use it.
- **KEEP** this Owner's Manual for future reference by storing it in the pocket behind the Backrest pad.
- **NEVER USE** the Booster Base without the Backrest attached.
- **NEVER TAKE** your child out of the booster seat to tend to his or her needs while the vehicle is moving. Unrestrained occupants are at a greatly increased risk of **DEATH** or **SERIOUS INJURY** in a car crash.
- **NEVER TEND** to your child's needs while driving. Driving while distracted is the cause of many car crashes. Safely stop your vehicle in order to tend to your child.
- **NEVER LEAVE** children unattended in a vehicle, even for a short period of time
- The primary protection for occupants of a vehicle in a collision is the structure of the vehicle itself; a booster seat and the vehicle restraint system may not protect a child from injury when a vehicle is

⚠ WARNING! DEATH or SERIOUS INJURY can occur

seriously impacted. Correctly used per the instruction and labeling, this booster seat will substantially improve the chances for survival in most crashes.

- **TOO MUCH RECLINE IN THE VEHICLE SEAT BACK** can result in improper seat belt position. An improperly positioned seat belt increases the risk of **DEATH** or **SERIOUS INJURY** in a crash. Follow your vehicle Owner's Manual 📖 instructions for proper seat back positioning.
- **USE ONLY** the vehicle's lap and shoulder belt system when restraining your child in this booster seat.
- **IMPROPER PLACEMENT** of this booster seat in a vehicle affects the booster seat's performance and can result in **DEATH** or **SERIOUS INJURY**.
- **ONLY PLACE** this booster seat **FORWARD FACING** in a vehicle seating location allowed by the vehicle manufacturer. Refer to your vehicle Owner's Manual 📖 for information about

vehicle seat belt systems, air bags, and child restraint/booster seat installation to determine allowable seating positions.

- Use this booster seat **FORWARD FACING ONLY**.
- **ACCORDING TO ACCIDENT STATISTICS**, children are safer when properly restrained in rear vehicle seating positions.
- **DO NOT USE** this booster seat in a seating position with an airbag unless the vehicle manufacturer specifically allows placement of a child restraint there. If an air bag inflates, it can hit your child with such a great force that it may cause **DEATH** or **SERIOUS INJURY**.
- The Backrest of this booster seat **MUST REST** against the vehicle seat back.
- Vehicle headrest **MUST NOT INTERFERE** with the booster seat Backrest. See the vehicle Owner's Manual 📖 for adjustment or possible removal of vehicle headrest.

⚠ WARNING! DEATH or SERIOUS INJURY can occur

- **NO PART** of this booster seat should hang over the front of the vehicle seat.
- **NEVER USE** a locking clip when installing this booster seat.
- **NEVER** leave this booster seat unsecured in your vehicle. This booster seat **MUST** remain connected to the lower LATCH/UAS anchors in the vehicle or secured by the vehicle's seat belt even when not in use. In a sharp turn, crash or sudden stop, an unsecured booster seat can be thrown around and could severely injure vehicle occupants.
- **DO NOT SECURE** this booster seat to the vehicle's lower LATCH/UAS anchors if the seat belt or seat belt buckle is not easily accessible when the booster seat is securely installed.
- **NEVER LEAVE** a vehicle seat with a folding mechanism unlocked. In the event of a sudden stop, a loose vehicle seat back could prevent this booster seat from protecting your child as well as it should.
- **DO NOT LEAVE** loose objects (e.g. books, bags, etc.) in a vehicle. In the event of a sudden stop, loose objects will become projectiles, potentially causing serious injuries.
- **DO NOT USE** anything to raise this booster seat off the vehicle seat.
- **NEVER USE** this booster seat in the home, on aircraft, boats, low speed vehicles (LSV), all-terrain vehicles (ATV), golf carts, or any other non-certified application.
- **NEVER ALLOW** children to play with this booster seat.
- **NEVER ALLOW** children to play with vehicle seat belts as they may create an **ENTANGLEMENT HAZARD** for any child that can reach the seat belt and may wrap it around his or her neck.
- **DO NOT USE** this booster seat if it has been in a crash. There may be hidden damage and it must be replaced. Your insurance company may provide some assistance replacing the booster seat.

⚠ WARNING! DEATH or SERIOUS INJURY can occur

- **NEVER USE** this booster seat if it has been damaged in any way or has missing parts.
- **NEVER USE** a cut, damaged, frayed, or inoperable vehicle seat belt.
- **DO NOT ATTEMPT** to make repairs to or otherwise modify or tamper with this booster seat.
- **NEVER USE** this booster seat without properly installed fabric covers.
- **NEVER USE** a second-hand booster seat or a booster seat whose history you do not know.
- **DO NOT USE** accessories or parts with this booster seat other than those approved by CYBEX. Use of accessories or parts from other manufacturers could alter the performance of the booster seat.
- **DISCONTINUE USING** this booster seat when it is older than eight (8) years and recycle it. The date of manufacture can be found on a label affixed to the bottom of the Booster Base.
- This booster seat and the vehicle seat belt can become very hot if left in the sun and can burn your child's skin. **ALWAYS TOUCH** the surfaces of the parts before putting your child in the booster seat.

⚠ WARNING! DEATH or SERIOUS INJURY can occur

- **NEVER USE** the Booster Base without the Backrest attached.
- **NEVER** use this booster seat with the Backrest past the allowable adjustment range. An audible **CLICK** will alert you when you have gone too far.

STEP 1

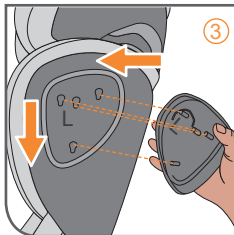
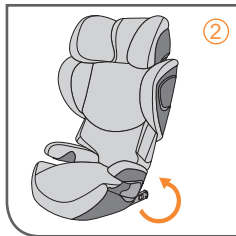
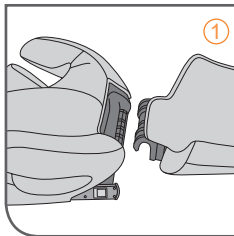
Connect the Backrest to the Booster Base.

STEP 2

Fold the Backrest up until it **CLICKS** into place.

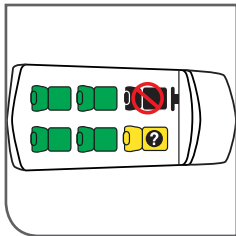
STEP 3

Line up the tabs on the left L.S.P. Bolster with key holes on the Shoulder Pad and slide down to lock in place. Repeat with the Right L.S.P. Bolster.



⚠ WARNING! DEATH or SERIOUS INJURY can occur


- **ONLY PLACE** this booster seat **FORWARD FACING** in a vehicle seating location allowed by the vehicle manufacturer. Refer to your vehicle Owner's Manual 📖 for information about vehicle seat belt systems, air bags, and child restraint/booster seat installation to determine allowable seating positions.
- Use this booster seat **ONLY IN FORWARD FACING VEHICLE SEATS.**
- **ACCORDING TO ACCIDENT STATISTICS**, children are safer when properly restrained in rear vehicle seating positions.



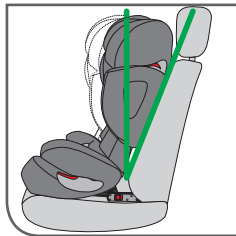
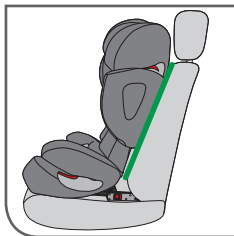
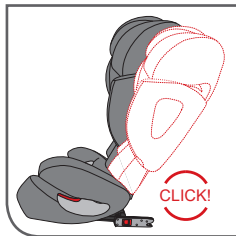
VEHICLE SEAT LOCATION REQUIREMENTS

⚠ WARNING!

DEATH or SERIOUS INJURY can occur

- Vehicle headrest **MUST NOT INTERFERE** with the booster seat Backrest. See the vehicle Owner's Manual  for adjustment or possible removal of vehicle headrest.
- **NO PART** of this booster seat should hang over the front of the vehicle seat.
- **NEVER ALLOW** your child to use this booster seat if the vehicle seat back is in a reclined position.
- **NEVER** use this booster seat with the Backrest past the allowable adjustment range. An audible **CLICK** will alert you when you have gone too far.
- The Backrest of this booster seat **MUST REST** against the vehicle seat back.

The Backrest will adjust to the vehicle seat back through an allowable adjustment range of approximately 15° as shown in green.



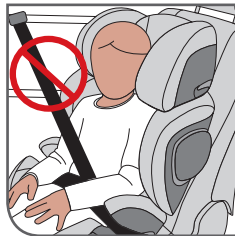
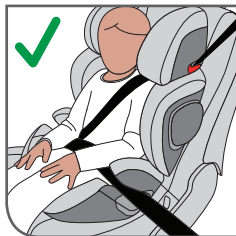
⚠ WARNING! DEATH or SERIOUS INJURY can occur

- **USE ONLY** the vehicle's lap and shoulder belt system when restraining your child in this booster seat.
- **NEVER USE** this booster seat with a lap belt only, or with any motorized, door mounted, or inflatable vehicle belts. Your child would not be properly restrained in the event of a crash.

The design and operation of vehicle seat belt systems vary from vehicle to vehicle and from seating location to seating location in the same vehicle. Refer to your vehicle Owner's Manual 📖 for proper use, placement, and adjustment of the vehicle's lap and shoulder belts.

This booster seat may not fit some vehicle seating positions.

Select a seat location allowed by your vehicle manufacturer that is equipped with a **LAP AND SHOULDER BELT** system.



VEHICLE LATCH/UAS REQUIREMENTS

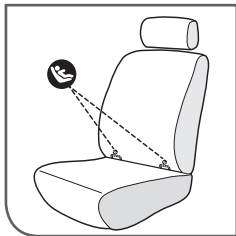
⚠ WARNING!



DEATH or SERIOUS INJURY can occur

- **NEVER** leave this booster seat unsecured in your vehicle. This booster seat **MUST** remain connected to the lower LATCH/UAS anchors in the vehicle or secured by the vehicle's seat belt even when not in use. In a sharp turn, crash or sudden stop, an unsecured booster seat can be thrown around and could severely injure vehicle occupants.
- **DO NOT SECURE** this booster seat to the vehicle's lower LATCH/UAS anchors if the seat belt or seat belt buckle is not easily accessible when the booster seat is securely installed.

Applicable only if installing booster seat using the lower LATCH/UAS anchors:

NOTE: Your vehicle owner's manual may refer to this system as LATCH (Lower Anchors and Tethers for **CH**ildren) or UAS (Universal Anchorage System).



- LATCH/UAS refers to a pair of fixed Lower Anchors and a Top Tether built into your vehicle. The Solution Z-fix has been designed to attach to the Lower Anchors of this system.
- The lower LATCH/UAS anchors are located in the crease between the vehicle seat back and seat cushion. If they are not visible, their position will be indicated by  symbols located near the crease.
- Vehicles manufactured for the 2003 model year or newer have at least two rear seating locations with lower LATCH/UAS anchors. Some 2001 and 2002 model year vehicles have lower anchors. Vehicles from model years 2000 and older **DO NOT** have lower LATCH/UAS anchors. Refer to your vehicle Owner's Manual  for lower anchor positions in your vehicle.

INSTALLING USING LATCH/UAS

The Solution Z-fix is designed to be used with the vehicle's lower LATCH/UAS anchors, if available. This booster seat may also be used in seating positions without lower LATCH/UAS anchors (see page 19).

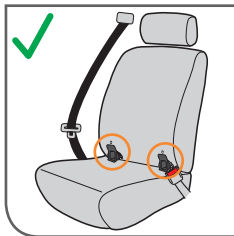
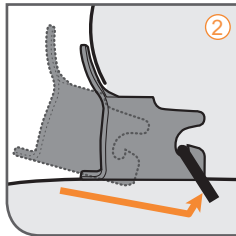
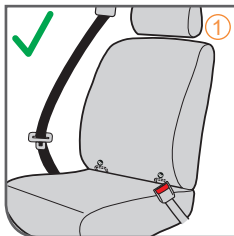
STEP 1

Select a seat location allowed by your vehicle manufacturer equipped with a **LAP AND SHOULDER BELT** system. Locate the lower LATCH/UAS anchors or the symbols indicating their location.

STEP 2

If the lower anchors are hidden behind the crease between the seat back and seat cushion, install the supplied LATCH/UAS Guides to the lower LATCH/UAS anchors for easier installation of the booster seat.

To install, connect the two LATCH/UAS Guides to the two lower anchors by sliding the LATCH/UAS Guides into the crease and under the lower anchor.



INSTALLING USING LATCH/UAS

STEP 3

Place the Solution Z-fix on its side. While squeezing the orange LATCH/UAS Adjustment Handle located on the bottom of the Booster Base, pull the LATCH/UAS Connectors out until they stop. Then rotate the LATCH/UAS Connectors 180°.

STEP 4

Push the LATCH/UAS Connectors onto the lower anchors until you hear them CLICK. The **GREEN** security bar will be visible on the release button when the LATCH/UAS Connectors are securely attached to the lower anchors.

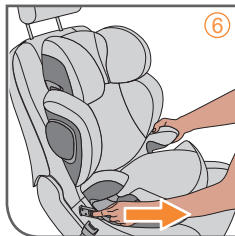
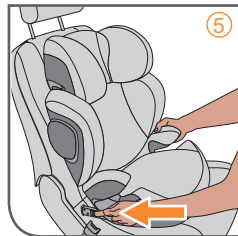
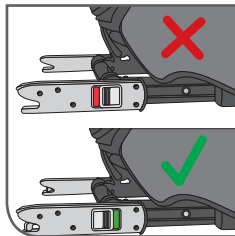
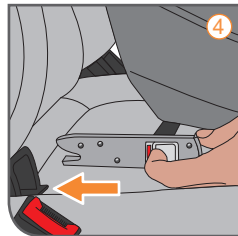
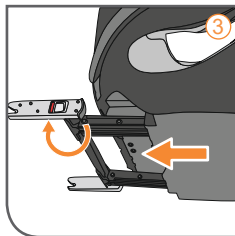
STEP 5

While squeezing the LATCH/UAS Adjustment Handle, push the booster until it rests flat against the vehicle seat back.

Release the handle and the booster seat will lock into place.

STEP 6

Make sure that the booster seat is connected safely by trying to pull it out on both sides.



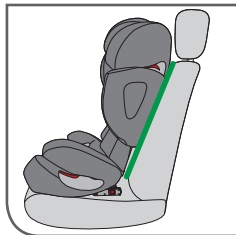
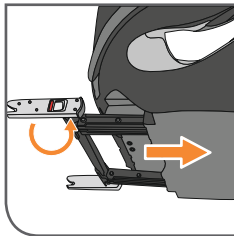
⚠ WARNING! DEATH or SERIOUS INJURY can occur

- **ACCORDING TO ACCIDENT STATISTICS**, children are safer when properly restrained in rear vehicle seating positions.
- **NEVER USE** the Booster Base without the Backrest attached.
- **NEVER USE** a locking clip when installing this booster seat.

First, refer to pages 13–14 for Vehicle Seat Location Requirements.

Select a seat location allowed by your vehicle manufacturer that is equipped with a **LAP AND SHOULDER BELT** system.

With the LATCH/UAS connectors pushed in and stored away (see page 26), simply place the booster seat on the vehicle seat, making sure that the Backrest is in full contact with the vehicle seat back and does not interfere with the vehicle's headrest.



ADJUSTING THE SEAT FOR YOUR CHILD

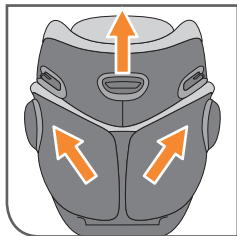
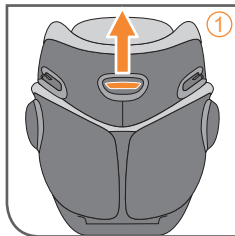
HEIGHT AND WIDTH

The innovative size adjustment of the Solution Z-fix automatically adjusts the width of the Shoulder Pad as the height of the Headrest is adjusted.

After the Solution Z-fix is properly installed:

STEP 1

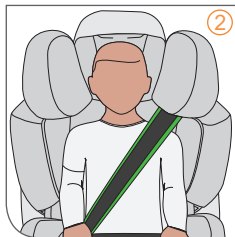
Squeeze the Headrest Height Adjustment Handle (highlighted in **orange**) and adjust the Headrest to its highest position.



STEP 2

Place your child in the booster seat making certain they are sitting up straight with their back against the Backrest.

Adjust the headrest so that the shoulder belt **lies across the middle of the shoulder (GREEN ZONE)** and snug across the midpoint of the child's chest.



ADJUSTING THE SEAT FOR YOUR CHILD

ADJUSTING THE RECLINING HEADREST

The Solution Z-fix has a Three Position Reclining Headrest to help prevent your child's head from falling forward while asleep.

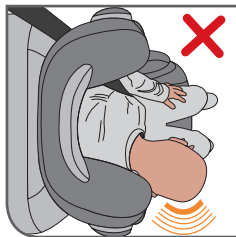
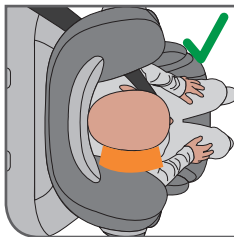
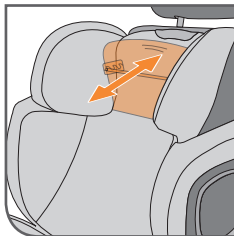
After adjusting the Backrest to the correct height for your child (page 20), select the position that is most comfortable for your child.

To adjust, lift up and move the headrest forward or backward to one of the 3 positions:

1. Upright
2. Semi recline
3. Full recline

i For smaller children, it may be appropriate to set the headrest for one of the two reclining positions in anticipation of them falling asleep.

With some instruction and practice, a child can easily learn to adjust the Reclining Headrest by him or herself.



⚠ WARNING! DEATH or SERIOUS INJURY can occur

- **NEVER USE WITH A LAP BELT ONLY.**
- **NEVER ALLOW** your child to place the shoulder belt behind his or her back.
- **NEVER ALLOW** your child to place the shoulder belt under his or her armpit.
- **NEVER ALLOW** the seat belt buckle to be located within the Lower Belt Guide. Refer to the vehicle Owner's Manual 📖 for possible solutions.

ⓘ Sometimes a longer buckle stalk will interfere with proper belt routing. If this is the case, try a different vehicle seat position.



⚠ WARNING! DEATH or SERIOUS INJURY can occur

- **NEVER POSITION** any part of the vehicle seat belt over the top of the armrests.
- **NEVER USE** with the shoulder belt in contact with your child's neck.
- **NEVER ALLOW** your child to slide down in the booster seat. This could position the lap belt across your child's abdomen and/or cause the shoulder belt to be in contact with your child's neck.



SECURING YOUR CHILD IN THE BOOSTER SEAT

STEP 1

Slip the shoulder belt between the Shoulder Pad and the Headrest and route the belt inside the Belt Guide making sure it rests **INSIDE** the **RED** area.

STEP 2

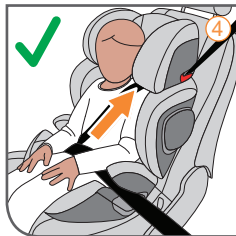
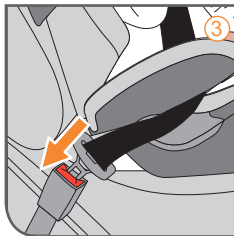
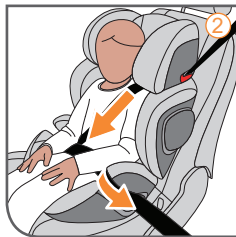
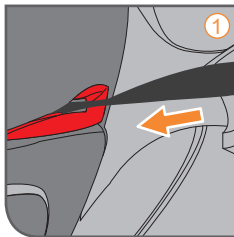
Pull the shoulder belt down across your child's chest while guiding the lap belt underneath both armrests.

STEP 3

Buckle the seat belt, making sure the shoulder belt passes underneath the armrest on the buckle side.

STEP 4

Pull up on the shoulder belt to remove any slack.



⚠ WARNING!

DEATH or SERIOUS INJURY can occur

- **NEVER USE** this booster seat with a lap belt only, or with any motorized, door mounted, or inflatable vehicle belts. Your child would not be properly restrained in the event of a crash.



SECURING YOUR CHILD IN THE BOOSTER SEAT

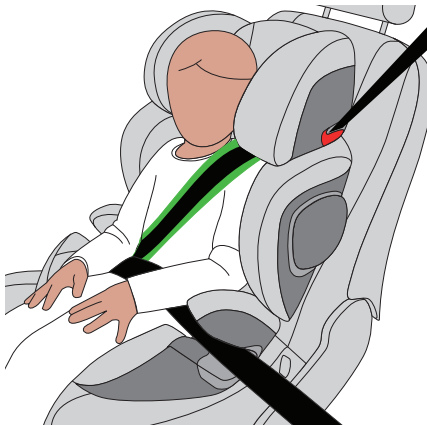
When your child sits properly in the booster seat:

- The lap portion of the seat belt must be positioned **low and snug on your child's thighs** and **NEVER** on your child's abdomen.
- The shoulder belt should be threaded through the belt guide and positioned across the **mid-point of your child's chest and shoulder**, and **NEVER** in contact with your child's neck. The shoulder belt **MUST LIE WITHIN THE GREEN ZONE** as shown:

IMPORTANT: If the vehicle belt does not fall within the **GREEN ZONE**, adjust the Headrest to achieve proper belt fit.

- **BOTH** the lap and shoulder belt must be **underneath** the armrest on the side with the buckle. Pull up on the shoulder belt to remove any slack in the belts.

- i** If you need to use a blanket in cold weather, secure your child in the booster seat first, and then cover both child and booster seat with the blanket.



UNINSTALLING THE BOOSTER SEAT

STEP 1

Unbuckle the vehicle belt. Remove the shoulder belt from the guide by pressing down on the red belt guide hook.

STEP 2

While squeezing the LATCH/UAS Adjustment Handle, pull the booster seat away from the vehicle seat.

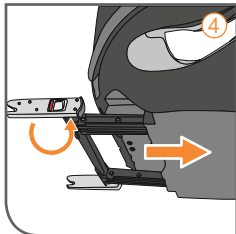
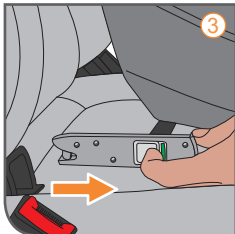
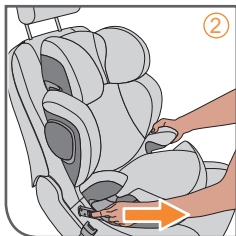
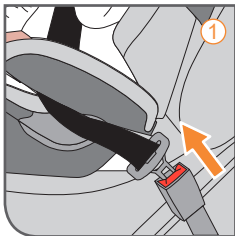
STEP 3

Release both LATCH/UAS Connectors at the same time by pressing in while pulling back on the release buttons.

Slide the LATCH/UAS Connectors out of the LATCH/UAS Guides.

STEP 4

Rotate the LATCH/UAS Connectors 180°. While squeezing the Adjustment Handle, push the LATCH/UAS Connectors into the booster seat for storage.



⚠ **WARNING!** DEATH or **SERIOUS INJURY** can occur

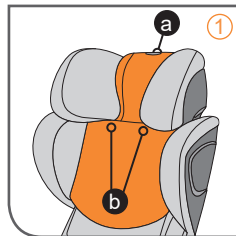
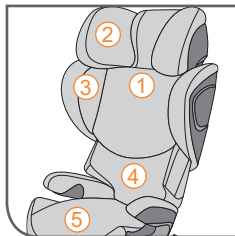
- **NEVER USE** this booster seat without properly installed fabric covers.
- Do not damage, remove, or dispose of the foam Headrest Pads or Side Pads on this booster.

REMOVING THE FABRIC COVERS

The seat is covered with five separate parts - the Reclining Headrest Pad (1), Headrest Cover (2), Side Pad Cover (3), Backrest Cover (4), and Seat Pad (5). To remove these parts, please follow the instructions below.

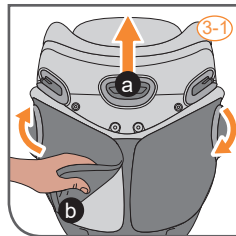
1. Reclining Headrest Pad:

- From the rear of the seat, release the hook and loop fasteners connecting the Reclining Headrest Pad to the Headrest Cover.
- From the front of the seat, undo the two snaps securing the underside of the Reclining Headrest Pad to the Side Pad Cover and pull up to remove.



2. Headrest Cover:

Undo the three snaps at the rear of the Headrest Cover and pull the cover forward over both Head Pads to remove.



3. Side Pad Cover:

- Move the Headrest to its highest position.
- From the rear of the seat, lift up and remove the Side Pad Cover at one corner of the lower seat back and pull toward the front.

FABRIC COVERS

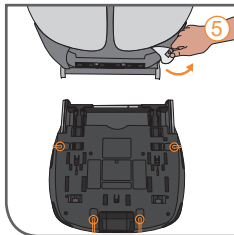
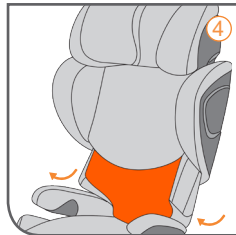
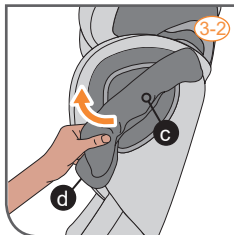
- c. Untuck the Side Pad Cover from around the silver base of the L.S.P. Bolster and pull the Side Pad Cover toward the front of the seat.
- d. Release the two snaps on the underside of the Side Pad Cover, pull the cover off the opposite Side Pad, and finish removing the cover by pulling toward the back of the seat.

4. Backrest Cover:

Remove the bottom corners of the Backrest cover from the slots on the rear of the seat and pull the Backrest Cover off the seat back.

5. Seat Pad:

Undo the snaps at the bottom rear corners of the Seat Pad. Disconnect the elastic bands from the underside of the seat and remove the Seat Pad.



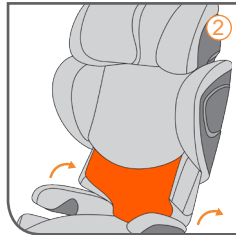
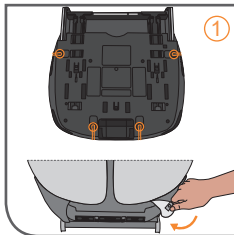
REPLACING THE FABRIC COVERS

1. Seat Pad:

Install the Seat Pad to the seat and secure the elastic bands on the underside of the seat. Secure the snaps at the bottom rear corners of the Seat Pad to the seat base.

2. Backrest Cover:

From the front of the seat, wrap the Backrest Cover over the seat back and tuck the bottom corners into the slots at the rear of the seat.



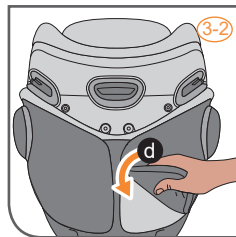
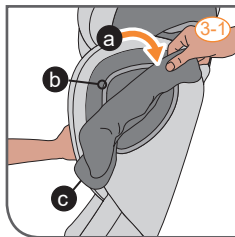
FABRIC COVERS

3. Side Pad Cover:

- With the Headrest in its highest position, pull the Side Pad Cover on over one Side Pad at a time, making sure to support the base of the foam pad as you do.

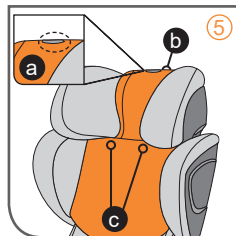
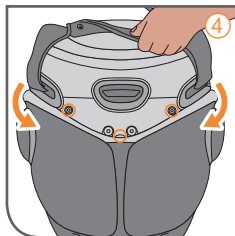
(i) Make sure that the red belt guide always remains visible above the seat cover.

- Tuck the edges of the Side Pad Cover around the silver base of the L.S.P. Bolster on each Side Pad.
- Secure the two snaps on the underside of the Side Pad Cover to the front of the seat.
- Pull the Side Pad Cover around to the back side of the seat and wrap around the edges of the lower seat back to secure.



4. Headrest Cover:

Pull the Headrest Cover on over the Headrest Pads, one side at a time, making sure to support the base of the foam pad as you do, and secure the three snaps at the rear of the Headrest Cover.



5. Reclining Headrest Pad:

- Slide the Reclining Headrest Pad onto the Reclining Headrest, taking care to tuck the edges securely under the silver handle at the top of the headrest.
- Secure the hook and loop fasteners at the rear of the pad to the Headrest cover.
- Secure the two snaps on the underside of the Reclining Headrest Pad through the loops on the Side Pad Cover.

CARE AND CLEANING

SPOT CLEANING

Spot clean the fabric seat covers as needed with a clean cloth using mild detergent and water.

FABRIC SEAT COVERS

Machine wash separately, cold water, gentle cycle.

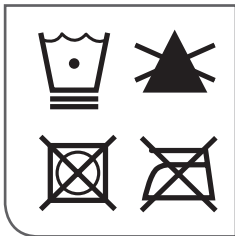
Do not bleach

Do not tumble dry

Do not iron

Do not dry clean

Line dry



METAL AND PLASTIC PARTS

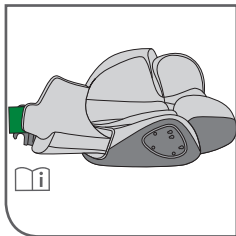
Wipe clean with mild detergent and cold water. Do not use household cleaners or solvents.

REPLACEMENT SEAT COVERS

In the event you need to replace your seat covers, please contact us in the US and Canada at 1-877-242-5676 to purchase a new fabric set. Keep in mind that colors and styles change each year, so your current color might not be available.

OWNER'S MANUAL

After carefully reading and following these instructions, store the Owner's Manual in the pocket behind the Backrest Pad.



SAFETY CHECKLIST

- ☐ Did you read and completely understand this Owner's Manual and all labels found on this booster seat?
- ☐ Is the booster seat completely assembled according to these instructions, with the Backrest attached to the Booster Base?
- ☐ Is today's date before the "Do Not Use After" date on your booster seat?
- ☐ Is your child 3 years of age or older AND does he/she weigh 18-50 kg (40-110 pounds) AND stand 96-152 cm (38-60 inches) tall?
- ☐ Is the booster seat forward-facing in a seating position with a lap and shoulder belt?
- ☐ Is the Headrest positioned so the tops of the child's ears are **below the top of the booster seat back**?
- ☐ If using the lower LATCH/UAS anchors, are both green safety bars showing on the LATCH/UAS Connectors?
- ☐ Does the backrest fit flat against the vehicle seat back in an upright position?
- ☐ Did you check for hot surfaces in sunny weather?
- ☐ Is the Lap Belt under both arm rests?
- ☐ Is the shoulder belt routed inside the **RED** Shoulder Belt Guide?
- ☐ Does the shoulder belt lie in the **GREEN ZONE** across the mid-point of your child's chest and shoulder?
- ☐ Does the lap belt lie low and snug on your child's thighs?
- ☐ Are the lap and shoulder belts snug, not twisted, and with no slack?
- ☐ **If you answered YES to all of these questions, you are good to go, DRIVE SAFELY!**

RESOURCES

IF YOU NEED HELP

Please contact our Customer Care Department, where we have many Child Passenger Safety (CPS) Technicians on staff, with any questions you may have concerning installation, parts, maintenance, or warranty information.

When you contact us, please have the Model Number and Manufactured on Date ready so that we may help you efficiently. This information can be found on the underside of your Booster Base.

Please contact CYBEX Customer Care at 1-877-242-5676.

E-mail: support.americas@goodbabyint.com

Web: www.cybex-online.com

75% OF ALL CAR SEATS ARE INSTALLED INCORRECTLY!

Installing your car seat correctly in your vehicle is extremely important for your child's safety. Make sure your car seat is installed correctly by using one of the following resources:

In the United States:

www.nhtsa.gov/equipment/car-seats-and-booster-seats

In Canada:

www.tc.gc.ca/en/services/road/child-car-seat-safety.html

In the United States and Canada:

www.safekids.org

To find an available CPS Technician in your area, go to bit.ly/FindATech

WARRANTY

IMPORTANT: Immediately register your Solution Z-fix so we can contact you in the unlikely event of a safety recall. Register online in the United States at <http://register.cybex-online.com/us/carseats> or in Canada at <http://register.cybex-online.com/ca/carseats>, or mail in the separate registration card provided.

LIMITED WARRANTY

CYBEX warrants to the original consumer purchaser that this product will be free from defects in material and workmanship for two (2) years from the date of original purchase (the "Warranty Period"). During the Warranty Period, CYBEX, at its option, may repair or replace this product if it is found by the manufacturer to be defective in material or workmanship. CYBEX reserves the right to discontinue or change parts, fabrics, models, or products, or to substitute this product with a comparable model or product. To make a claim under this warranty, please contact us at info.us@cybex-online.com, call us at 1-877-242-5676, or write to us at:

CYBEX Warranty
Columbus Trading Partners USA, Inc.
1801 Commerce Drive
Piqua, Ohio 45356

An original receipt is required to validate your warranty, and shipping charges will be the responsibility of the original consumer purchaser. To expedite the processing of any future warranty claims and to verify the original date of purchase, please complete and mail the pre-addressed owner registration card within thirty (30) days of purchase.

WARRANTY LIMITATIONS

This warranty does not cover the effects of normal wear and tear or damages resulting from negligence, modification, improper installation, accidents, misuse, or abuse of this product. It is expressly agreed that the obligations of CYBEX and the original consumer purchaser's remedies under the limited warranty contained herein are exclusive and are strictly limited to the repair or replacement of the product. This limited warranty is conditional upon strict compliance with the provisions of the Owner's Manual. In no event will CYBEX or the dealer selling this product be liable to you for any damages, including incidental or consequential damages, arising out of the use or inability to use this product.

LIMITATION OF WARRANTIES AND STATE/PROVINCIAL LAW RIGHTS

The warranty and remedies as set forth above are exclusive and in lieu of all others, oral or written, express or implied. To the extent permitted by applicable law, any implied warranties, including implied warranties of merchantability and fitness for a particular purpose, are hereby disclaimed. Some states/provinces do not allow limitations as to how long an implied warranty lasts or the exclusion or limitation of incidental or consequential damages, so the above limitations may not apply to you.

This warranty gives you specific legal rights, and you may have other rights, which vary from state/province to state/province. Neither CYBEX nor the dealer selling this product has authorized any person to create for it any other warranty, obligation, or liability in connection with this product.



Cybox Industrial Limited

Suite 1222, 12/F | Leighton Centre | 77 Leighton Road | Causeway Bay | Hong Kong
www.cybox-online.com

Distributed in the United States by Columbus Trading Partners USA Inc.
1801 Commerce Drive | Piqua, OH 45356 | USA
Tel: 1-877-242-5676 | e-mail: support.americas@goodbabyint.com | www.cybox-online.com

Distributed in Canada by Goodbaby Canada Inc.
2 Robert Speck Parkway, Suite 750 | Mississauga, ON L4Z 1H8 | Canada
Tel: 1-877-242-5676 | e-mail: support.americas@goodbabyint.com | www.cybox-online.com