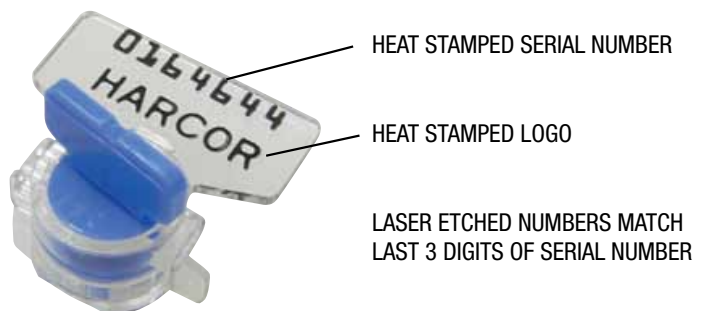


Tool-less Roto Seal

Features

- SCEC Approved.
- Two component acrylic seal.
- Wire rotates around insert.
- Laser etched 3 digit number on insert that matches last 3 digits of serial numbers.
- Stainless steel wire up to 304.8 mm can be attached (sold separately).
- Spools or precut lengths of wire also available.



Material

- Body: Acrylic

Dimensions

Carton (1000 units):
Size: 360mm x 230mm x 130mm
Weight: 2.85kg

Application

Utility and meter seal

TOOL-LESS ROTO SEAL - NUMBERED

BR13402 Insert colour blue
BR13408 Insert colour green

CUT WIRE TO SUIT

TOOL-LESS ROTO SEAL

250mm in length
0.65mm in diameter

CUSTOM OPTIONS

Custom one colour logo
Custom barcoding
Customised serial numbering is available on logo'd seals only

