

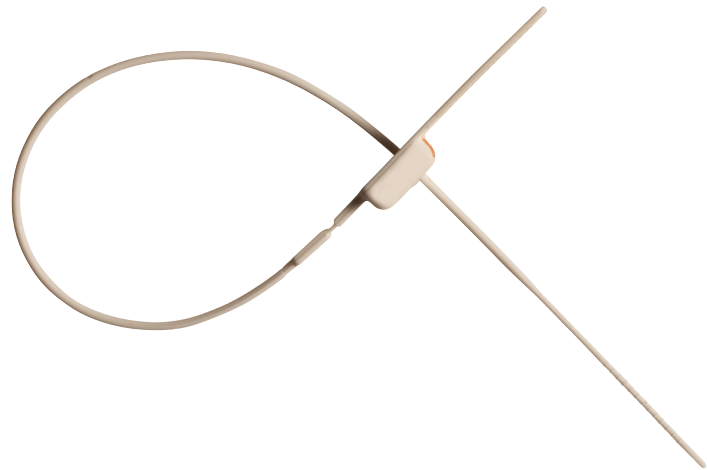
TEN-LOK

The latest generation of high-security adjustable strap-type seal.

To deter tampering, this high security seal houses the metal insert in a separate casing which is then welded into the locking chamber.

Key features

- SCEC approved.
- Multiple patents.
- Highly resistant to temperature changes.
- Unique sequential serial numbering.
- Large flag for easy identification.
- Suitable for a wide range of applications.
- Effortless tail insertion.
- Matted format; ten seals per mat.



Code	Description	Stock
BR77013	Ten-Lok 1 White Harcor-Numbered	Yes

Material

Body - Polypropylene
 Insert casing - Polypropylene
 Metal insert - Stainless Steel

Ten-Lok 1 Carton (1000 units)

Size 550 x 250 x 170 mm

Weight: 4.2 kg

Strength Characteristics

Pull apart: 8 to 16 kg (Models with a tail diameter of 2 mm)

Dimensions

Ten-Lok 1 • Flag 54 x 22 mm • Strip 290 mm • Ø 2 mm tail

Ten-Lok 2 • Flag 54 x 22 mm • Strip 190 mm • Ø 2 mm tail

Ten-Lok 5 • Flag 35 x 22 mm • Strip 190 mm • Ø 2 mm tail

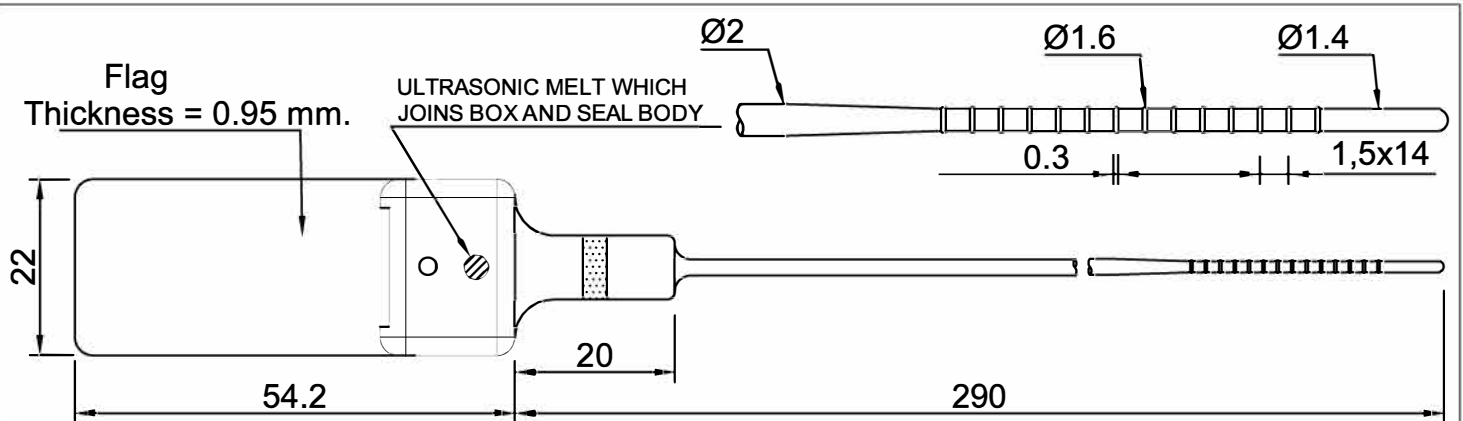
Ten-Lok 7 • Flag 68 x 22 mm • Strip 290 mm • Ø 2 mm tail

TL3001 • Flag 54 x 22 mm • Strip 445 mm • Ø 3.8 mm tail

TL3002 • Flag 54 x 22 mm • Strip 285 mm • Ø 3.8 mm tail

Please see individual specification sheets for colour availability. White Ten-Lok 1 is kept in stock, all other colours and models are special orders. Custom options include one colour logo, barcode and custom serial numbers (available on logo'd seals only).

TEN-LOK 1



ERROR MARGIN

ACCORDING TO
DIN-7168 RULES

SCALE 1/1

SCEC Approved

SPECIFICATIONS

PRODUCT:	TEN-LOK TAIL 290 (Polypropylene)
CODE:	TL001
CHARACTERISTICS	MATS OF 10 UNITS.
PACKAGING	1000 UNITS IN BOX (550 x 250 x 170 mm). Gross Weight = 4.2 Kg. Net Weight = 3.8 Kg.

TECHNICAL DATA

MEASUREMENTS	SHOWN ABOVE (mm.)
COLOURS	WHITE, BLACK, YELLOW, RED, DARK BLUE, DARK GREEN OTHER COLOURS ON REQUEST *DIRECT LASER IN WHITE, SOFT YELLOW AND BLACK
MATERIAL	SEAL: Polypropylene INSERT: Polypropylene METAL CLIP: Coated steel plate
STAMPING SYSTEM	HEAT STAMPED - LASER

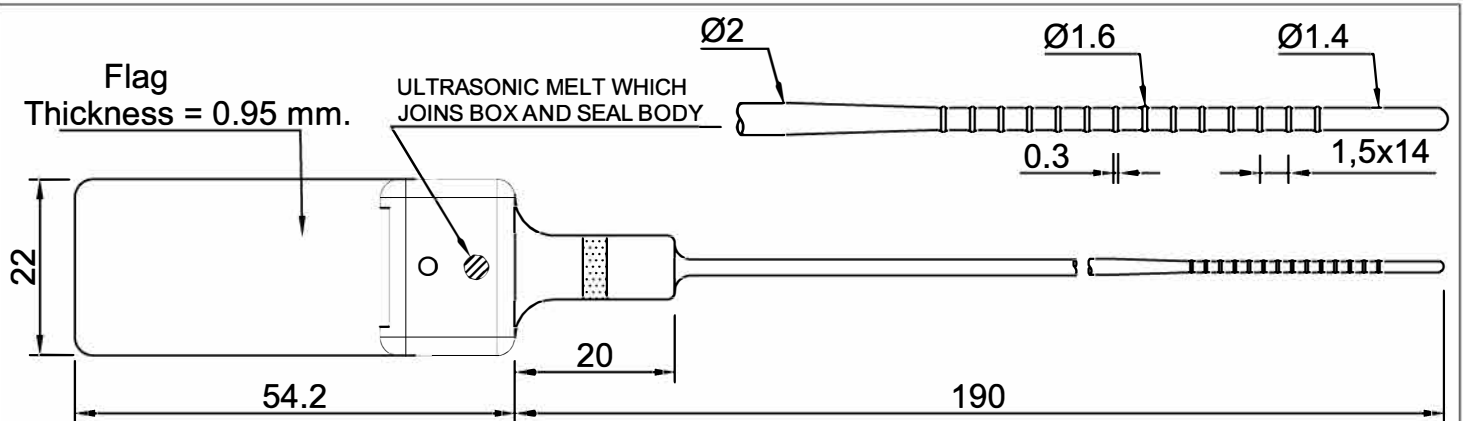
TESTS

MINIMUM STRENGTH IN KGS	Room Temperature	- 20° C	+ 50° C
	9 Kg.	16 Kg.	8 Kg.

COMMENTS: PLASTIC INSERT IN ORANGE COLOUR (PANTONE 165 C)

All product specifications are subject to change (specification code - V3891)

TEN-LOK 2



ERROR MARGIN

ACCORDING TO
DIN-7168 RULES

SCALE 1/1

SCEC Approved

SPECIFICATIONS

PRODUCT:	TEN-LOK TAIL 190 (Polypropylene)
CODE:	TL002
CHARACTERISTICS	MATS OF 10 UNITS.
PACKAGING	1000 UNITS IN BOX (520 x 240 x 160 mm). Gross Weight = 2.85 Kg. Net Weight = 2.45 Kg.

TECHNICAL DATA

MEASUREMENTS	SHOWN ABOVE (mm.)
COLOURS	WHITE, BLACK, YELLOW, RED, DARK BLUE, DARK GREEN OTHER COLOURS ON REQUEST *DIRECT LASER IN WHITE, SOFT YELLOW AND BLACK
MATERIAL	SEAL: Polypropylene INSERT: Polypropylene METAL CLIP: Coated steel plate
STAMPING SYSTEM	HEAT STAMPED - LASER

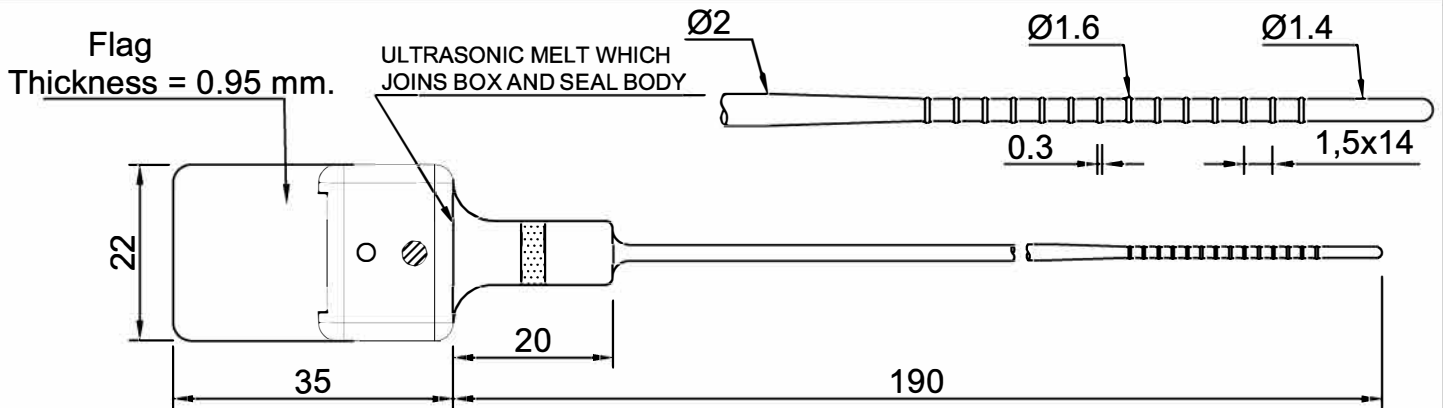
TESTS

MINIMUM STRENGTH IN KGS	Room Temperature	- 20° C	+ 50° C
	9 Kg.	16 Kg.	8 Kg.

COMMENTS: PLASTIC INSERT IN ORANGE COLOUR (PANTONE 165 C)

All product specifications are subject to change (specification code - V3892)

TEN-LOK 5



ERROR MARGIN

ACCORDING TO
DIN-7168 RULES

SCALE 1/1

SCEC Approved

SPECIFICATIONS

PRODUCT:	TEN-LOK TAIL 190 FLAG 35 (Polypropylene)
CODE:	TL005
CHARACTERISTICS	MATS OF 10 UNITS.
PACKAGING	1000 UNITS IN BOX (520 x 240 x160 mm). Gross Weight = 2.45 Kg. Net Weight = 2.05 Kg.

TECHNICAL DATA

MEASUREMENTS	SHOWN ABOVE (mm.)
COLOURS	WHITE, BLACK, YELLOW, RED, DARK BLUE, DARK GREEN OTHER COLOURS ON REQUEST *DIRECT LASER IN WHITE, SOFT YELLOW AND BLACK
MATERIAL	SEAL: Polypropylene INSERT: Polypropylene METAL CLIP: Coated steel plate
STAMPING SYSTEM	HEAT STAMPED - LASER

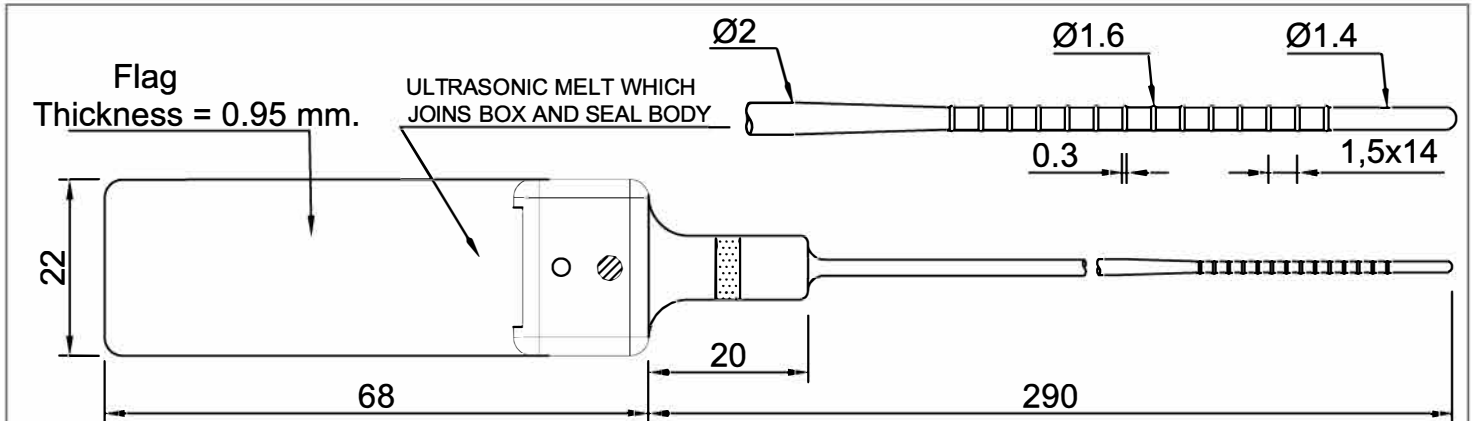
TESTS

MINIMUM STRENGTH IN KGS	Room Temperature	- 20° C	+ 50° C
	9 Kg.	16 Kg.	8 Kg.

COMMENTS: PLASTIC INSERT IN ORANGE COLOUR (PANTONE 165 C)

All product specifications are subject to change (specification code - V3895)

TEN-LOK 7



ERROR MARGIN

ACCORDING TO
DIN-7168 RULES

SCALE 1/1

SCEC Approved

SPECIFICATIONS

PRODUCT:	TEN-LOK TAIL 290 FLAG 68 (Polypropylene)
CODE:	TL007
CHARACTERISTICS	MATS OF 10 UNITS.
PACKAGING	1000 UNITS IN BOX (520 x 240 x 160 mm). Gross Weight = 3.2 Kg. Net Weight = 2.8 Kg.

TECHNICAL DATA

MEASUREMENTS	SHOWN ABOVE (mm.)
COLOURS	WHITE, BLACK, YELLOW, RED, DARK BLUE, DARK GREEN OTHER COLOURS ON REQUEST *DIRECT LASER IN WHITE, SOFT YELLOW AND BLACK
MATERIAL	SEAL: Polypropylene INSERT: Polypropylene METAL CLIP: Coated steel plate
STAMPING SYSTEM	HEAT STAMPED - LASER

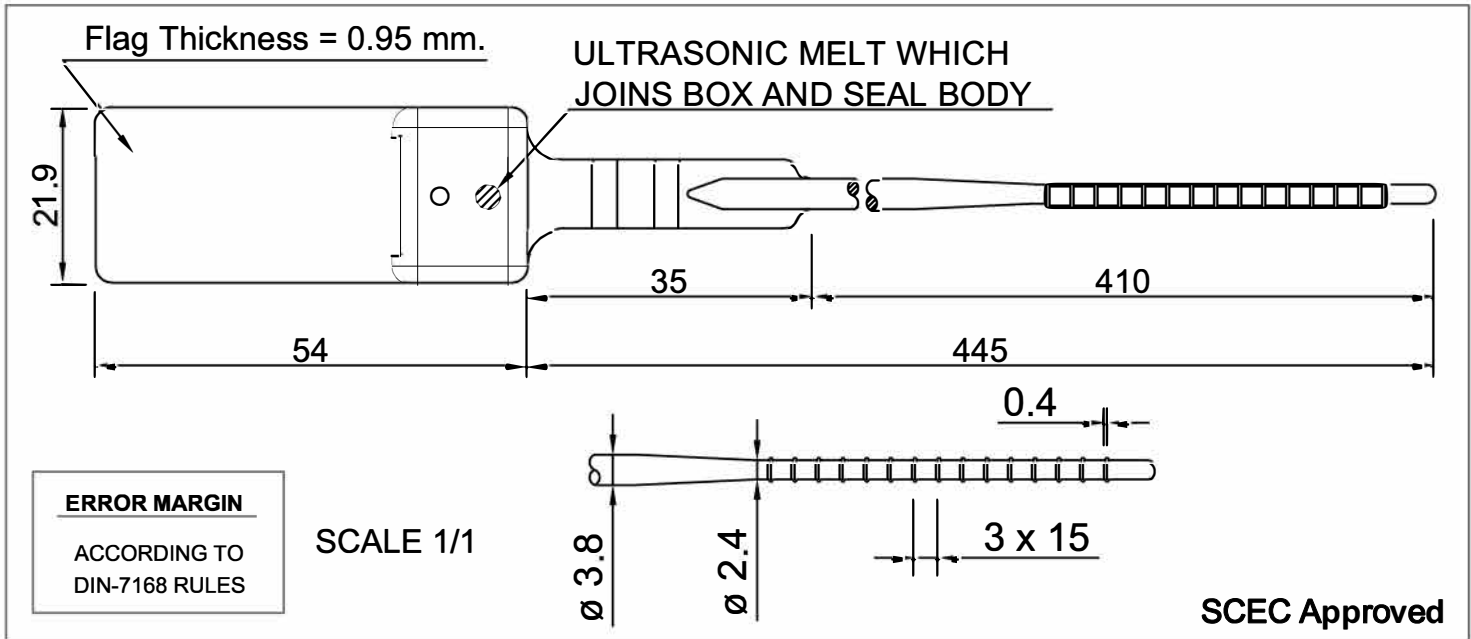
TESTS

MINIMUM STRENGTH IN KGS	Room Temperature	- 20° C	+ 50° C
	9 Kg.	16 Kg.	8 Kg.

COMMENTS: PLASTIC INSERT IN ORANGE COLOUR (PANTONE 165 C)

All product specifications are subject to change (specification code - V3897)

TEN-LOK \varnothing 3.8



SPECIFICATIONS

PRODUCT:	TEN-LOK \varnothing 3.8 TAIL 445 mm or 285 mm
CODE:	TL3001 / TL3002
CHARACTERISTICS	MATS OF 10 UNITS.
PACKAGING	1000 UNITS IN BOX 560 x 240 x 160 mm. Gross Weight = 6.65 Kg. Net Weight = 6.05 Kg.

TECHNICAL DATA

MEASUREMENTS	SHOWN ABOVE (mm)
COLOURS	WHITE, BLACK, RED, YELLOW, DARK GREEN, DARK BLUE OTHER COLORS ON REQUEST
MATERIAL	SEAL: Polypropylene INSERT: Polypropylene METAL CLIP: Coated steel plate
STAMPING SYSTEM	HEAT STAMPED - LASER - TERMODIGITAL

TESTS

STRENGTH IN KGS	Room Temperature	- 20° C	+ 50° C
	Min. 39 Kg.	Min. 53 Kg.	Min. 31 Kg.

COMMENTS: PLASTIC INSERT IN ORANGE COLOUR (PANTONE 7410 C)

All product specifications are subject to change (specification code - V3838)



TEN-LOK

Special usage instructions:

Inspection prior to applying the Ten-Lok Security Seal:

Inspect the seal thoroughly prior to application. This involves checking that you have the correct seal numbers, colour, physical appearance and that the seal's standard markings are visible. The comparison should be made against a known authentic Ten-Lok Security Seal. Security Seals should be stored in a safe location when unused.

Installation instructions:

Step One: Remove seal from mat. **Step Two:** The seal's flag shows where the tail is to be inserted into the seal's chamber and is marked ENTER. Insert security seal tail into the chamber and pull the tail to the required length.

Removal instructions:

Step One: Check serial numbering for validity and inspect the physical Security Seal for manipulation. An appearance comparison should always be made against an authentic Ten-Lok Security Seal. **Step Two:** Cut the Security Seal and keep removed security seal for secure disposal.

