



PARTS LIST:

A SLING

ACCESSORY LOOP

DAISY CHAIN LOOPS

ADJUSTMENT STRAPS

HUB

CONNECTOR PRONG

CARABINER

REFLECTIVE PATCH

B HANDS-FREE COMFORT LEASH™

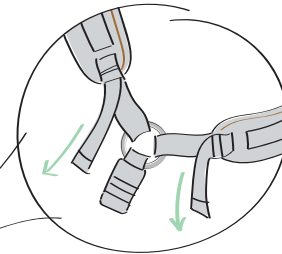
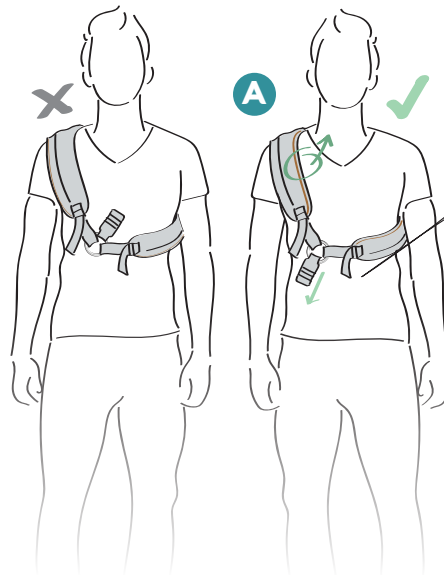
REFLECTIVE STRIP

SHOCK ABSORBING HANDLE

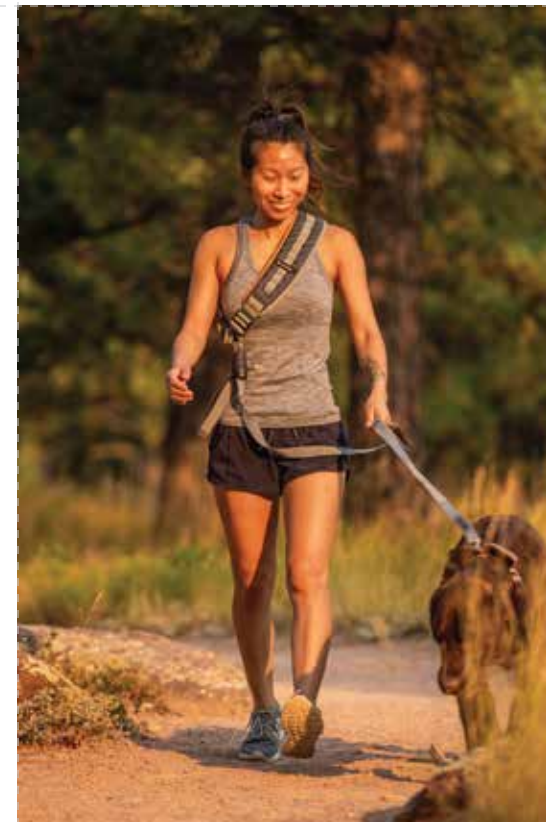
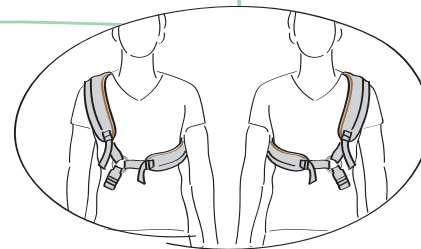
PUTTING ON THE SLING:

1 Slip the SLING (A) over your head and across your body. Make sure the colored seam is facing toward your neck, and that the HUB is pointing down.

2 Adjust the tightness with the two STRAPS, located above and below the HUB.

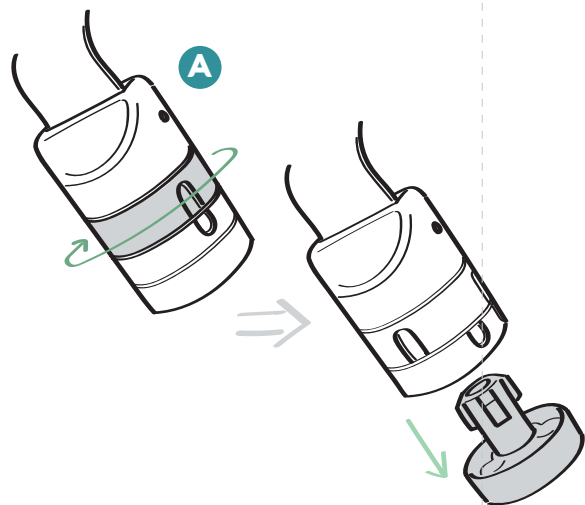


SLING can be worn on left or right side

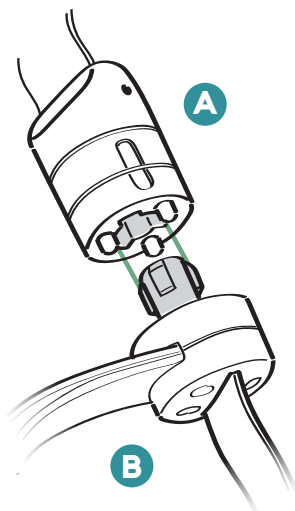


ATTACHING ACCESSORIES:

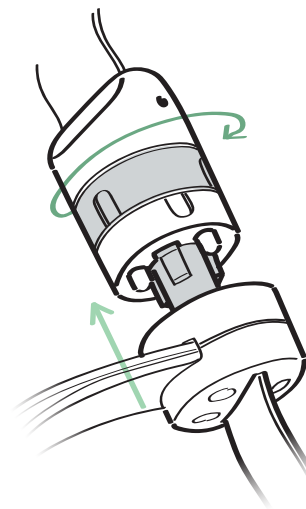
- 3 Remove the CAP from the HUB (A) by turning the dial to unlock the connector and pulling the cap.



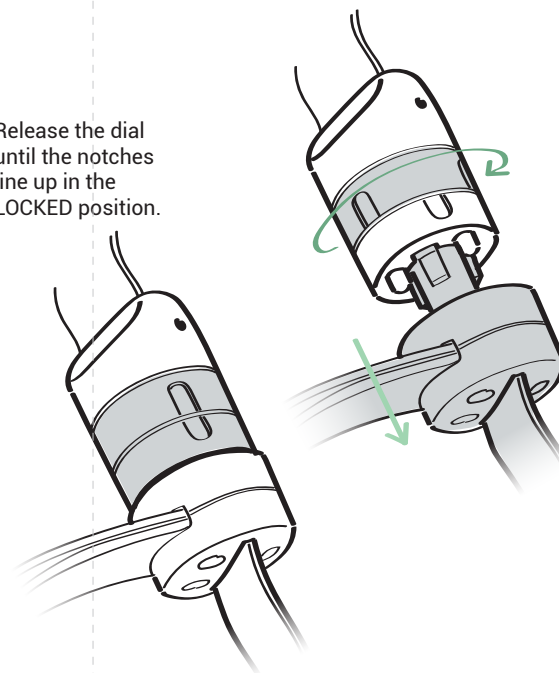
- 4 Take the LEASH (B) and line up the connector prong with the opening on the HUB.



- 5 Twist the dial on the HUB to the OPEN position. Then, insert the LEASH connector prong into the HUB.



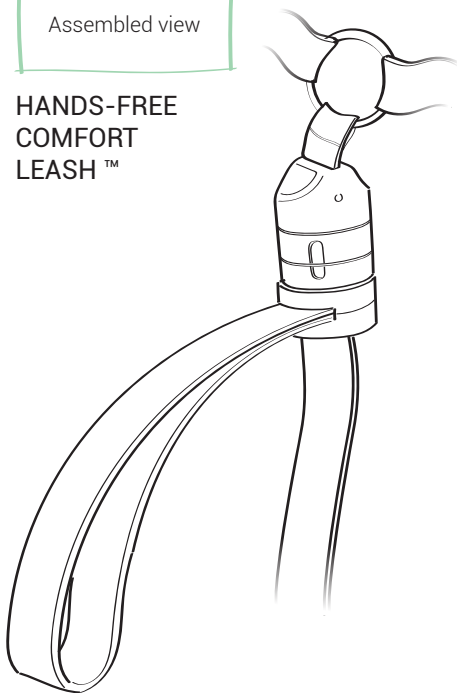
- 6 Release the dial until the notches line up in the LOCKED position.



- 7 To remove the ACCESSORY, twist the dial to UNLOCK and pull out the LEASH.

Assembled view

HANDS-FREE
COMFORT
LEASH™



MAINTENANCE AND CLEANING



Wipe clean with a damp cloth.

Spot clean with mild soap if needed.
Do not submerge in water.

Let air dry.

Do not machine wash.

Do not use bleach.

Do not tumble dry.

When not in use, keep the cap inserted in the hub to prevent debris from clogging the dial.

If you experience sticking in the hub dial, apply a small amount of penetrating lubricant.

WARNINGS

Everyone who uses this product must read all instructions pamphlet(s) attached to or included with this product. For a replacement pamphlet or if you have any questions, visit www.mylifehandle.com.

Keep products out of reach of small children.

If you experience any pain or discomfort while using these products, discontinue use immediately. Anyone with physical complications due to disease or injury, such as recurring pain, should consult with a physician before using this product. It is recommended to use the product for a short period of time until you are sure that it is comfortable and safe to use for longer durations.

Do not use this sling for any activity not outlined within the LifeHandle line of products. Never use the sling separately as a weight bearing product.

When attaching accessories to the Hub, always double check the connector for secure attachment. Only attach accessories to the Hub that have the corresponding connector. Do not attach products not intended for use with the Hub. Do not attempt to attach multiple Hub accessories at one time.

Do not use this leash with a disobedient or uncontrolled animal. Anyone using this leash must be able to control and watch their dog closely at all times.

Only operate the leash in a hands-free manner when it is safe and appropriate to do so. It is possible for your animal to pull you to the ground while the leash is attached to the sling. If you are not fully stable on your feet or if you are walking with your dog in a crowded area, it is recommended to firmly hold the loop handle attached to the leash, loosening the sling so that it is able to freely rotate around your body, or detaching the leash from the LifeHandle sling and holding it.

Never attach more than one animal to the leash. Do not attach additional accessories to the leash while in use. Never let anyone play with the leash. Do not attach any other accessory to the leash or sling unless using an approved LifeHandle accessory.